



# Quiz

- 1) In what direction is DNA synthesized when catalyzed by either DNA polymerase or reverse transcriptase?
- A) In what direction is DNA synthesized when catalyzed by either DNA polymerase or reverse transcriptase?
- B) Both DNA polymerase and reverse transcriptase catalyze the synthesis of DNA in the 5' to 3' direction
- C) DNA polymerase catalyzes the synthesis of DNA in the 3' → 5' direction, while reverse transcriptase catalyzes the synthesis of DNA in the 5' → 3' direction
- D) Both DNA polymerase and reverse transcriptase catalyze the synthesis of DNA in the 3' to 5' direction





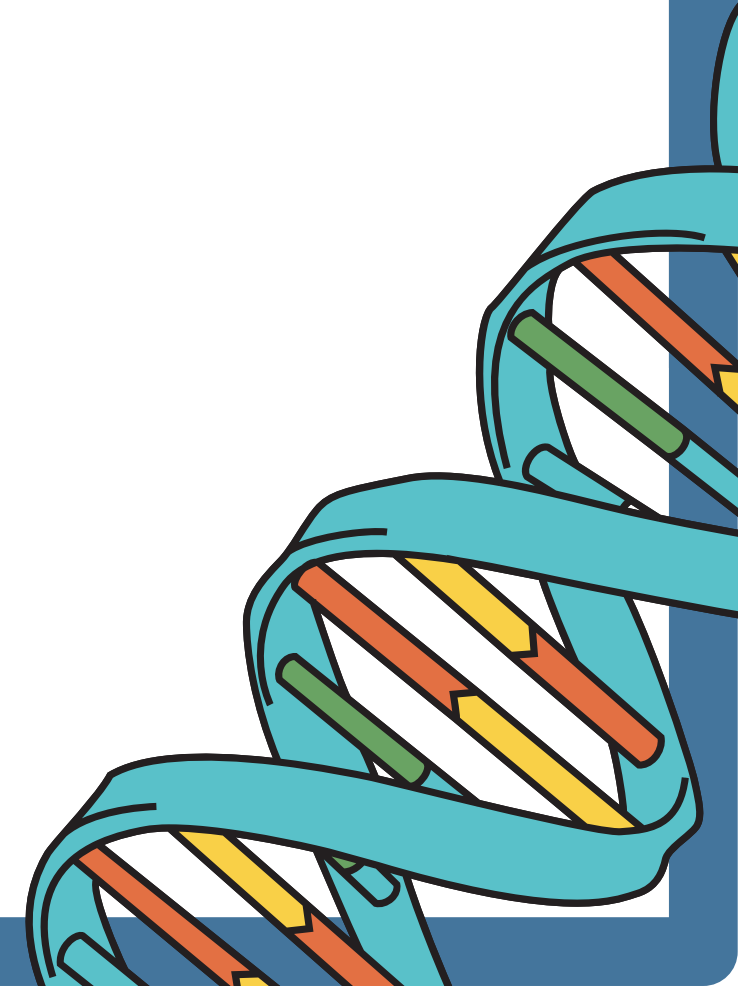
# Quiz

What constitutes the phosphodiester bonds in DNA?

- A) Hydrogen bonds between nucleosides
- B) Covalently linked nucleotides
- C ) Hydrogen bonds between complementary strands
- D) Covalently linked amino acids

What two parts of a nucleotide do not change throughout the structure of DNA?

- A) All components remain the same throughout the DNA structure
- B) Five-Carbon Sugar and Phosphate Group
- C) Phosphate Group and Nitrogen Base
- D) Five-Carbon Sugar and Nitrogen Base





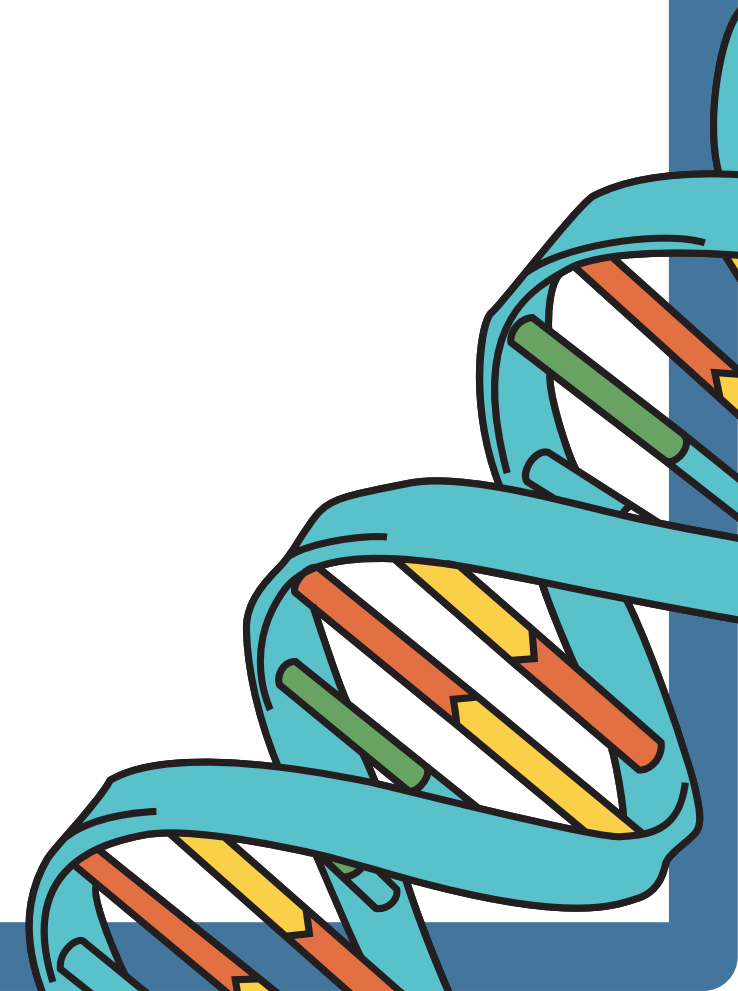
# Quiz

Which shows the correct complementary base pairing for DNA?

- A) C-G, U-A
- B) T-A, G-C
- C) A-G, C-T
- D) C-A, T-G

A monomer of DNA is called

- A) Monosaccharide
- B) Amino Acid
- C) Triglyceride
- D) Nucleotide





# Quiz

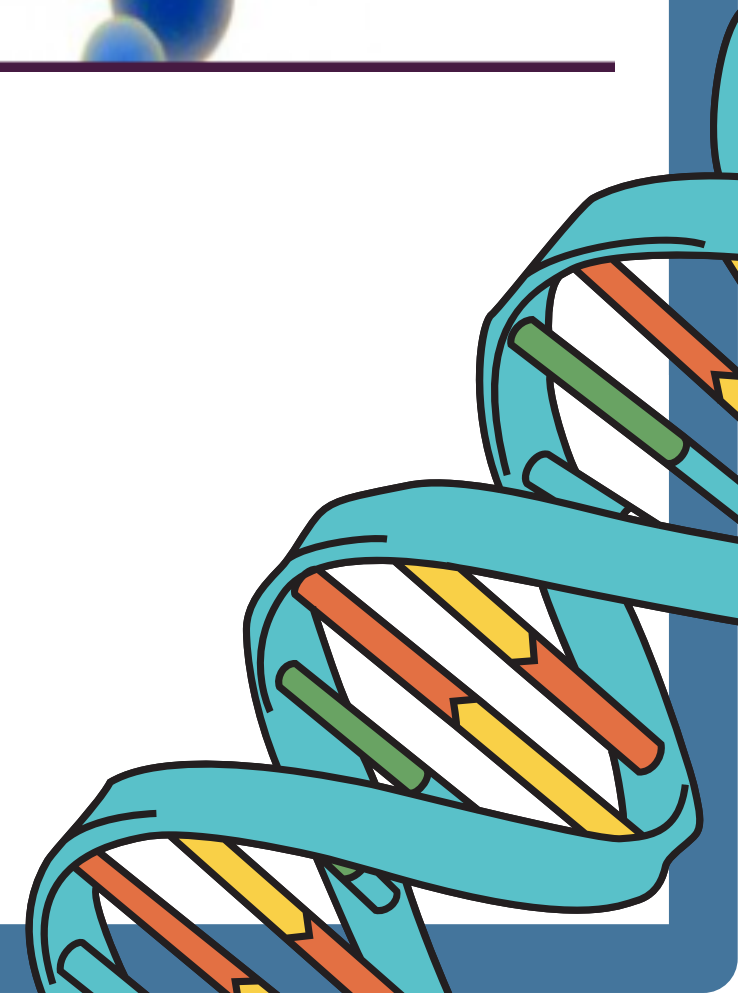
Which of the following best describes a DNA molecule?

- A) double helix
- B) contains ribose
- C) made of amino acids
- D) contains Uracil



Which of the following units are repeatedly joined together to form a strand of DNA?

- A) amino acids
- B) nucleotides
- C) fatty acids
- D) polysaccharides





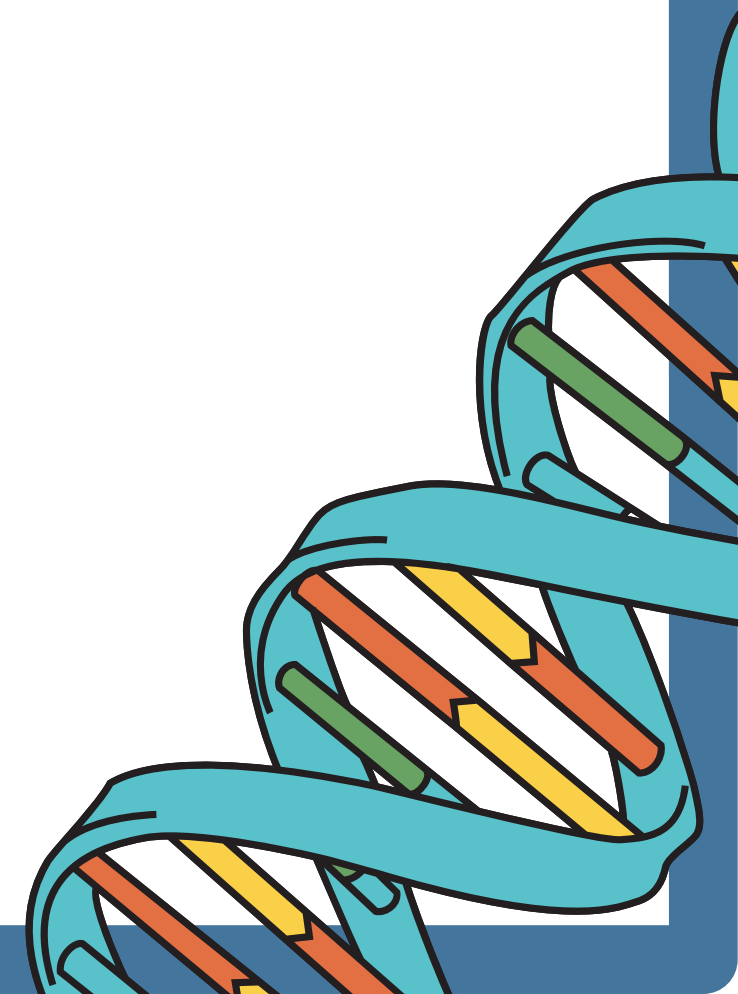
# Quiz

In a molecule of double-stranded DNA, the amount of Adenine present is always equal to the amount of

- A) cytosine
- B) guanine
- C) thymine
- D) uracil

What are the 4 nitrogen bases?

- A) adenine, thymine, cytoplasm, and guanine
- B) adenine, thymine, cytosine, and guanine
- C) adenine, thymine, cytosine, and glycerol
- D) adenine, thymine, cytosine, and glucose







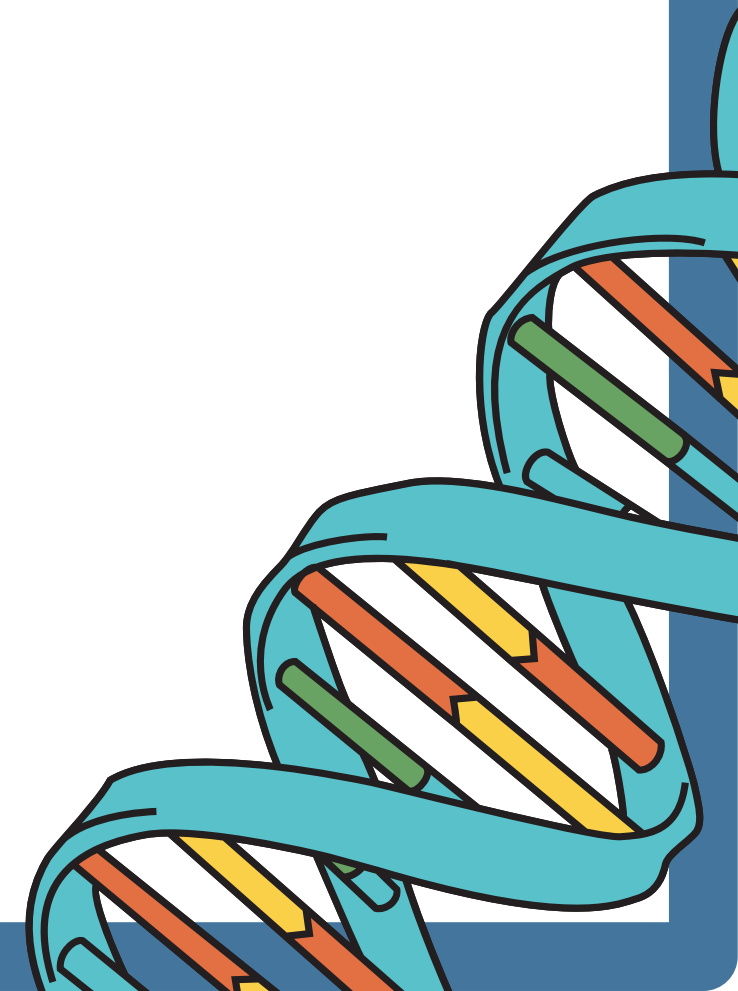
# Quiz

What determines the code, or information, of a DNA molecule?

- A) the shape (structure) of the nitrogen bases
- B) the order (sequence) of the nitrogen bases
- C) the color of the nitrogen bases
- D) the frequency (number) of nitrogen bases

Which 2 molecules form the sides (backbone) of the DNA ladder?

- A) deoxyribose and adenine
- B) deoxyribose and a hydrogen bond
- C) deoxyribose and the nucleus
- D) deoxyribose and phosphate





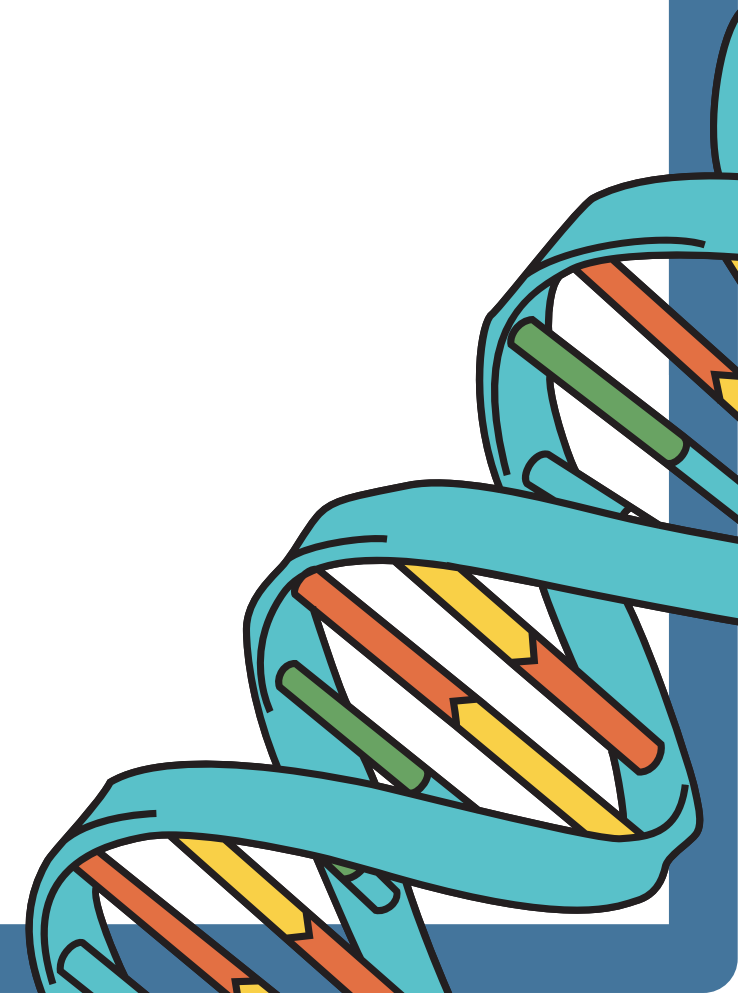
# Quiz

Nitrogenous bases are joined by which type of bond?

- A) polar bonds
- B) ionic bonds
- C) covalent bonds
- D) hydrogen bonds

What is the relationship between a protein, the cell, and DNA?

- A) DNA is produced by protein which is produced in the cell
- B) Protein is composed of DNA which is produced in the cell
- C) DNA controls the production of protein in the cell
- D) A cell is composed of DNA and protein





# Quiz

1)B

2)B

3)B

4)B

5)D

6)A

7)B

8)C

9)B

10)B

11)D

12)D

13)C



الحمد لله

