



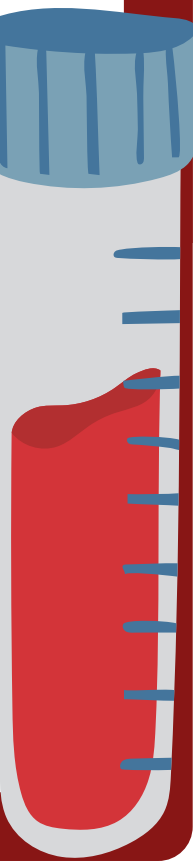
Quiz

How is apoptosis involved in normal embryological development?

- A) Apoptosis removes parts of the parent DNA from the embryo.
- B) Apoptosis is used to provide nutrients to developing cells.
- C) Overall brain development is inhibited by apoptosis to keep the embryo safe.
- D) Unnecessary parts of the body that normally develop in the embryo are removed with apoptosis.

Which of the following statements accurately compares apoptosis with necrosis?

- A) Apoptosis results in cell rupture, which releases intracellular contents, while necrosis does not.
- B) Both apoptosis and necrosis are important tools in embryological development.
- C) Both apoptosis and necrosis are triggered as the result of physical cell injury.
- D) Necrosis causes an inflammatory response, but apoptosis does not.





Quiz

Which of the following are functions of apoptosis?

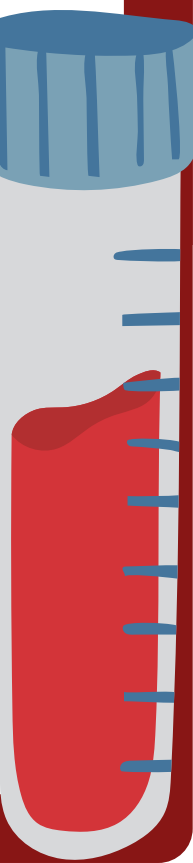
Choose all answers that apply:

- A) Shape organs during development
- B) Allow cells to die in a controlled manner
- C) Divide cells into two identical daughter cells
- D) Maintain immune system balance

Give the correct sequence of apoptosis:

1. Nucleus begins to break
2. Nucleus condensation and formation of bleb
3. Phagocytosis of apoptotic bodies

- A)1, 2, 3
- B)2, 3, 1
- C)3, 2, 1
- D)2,1,3





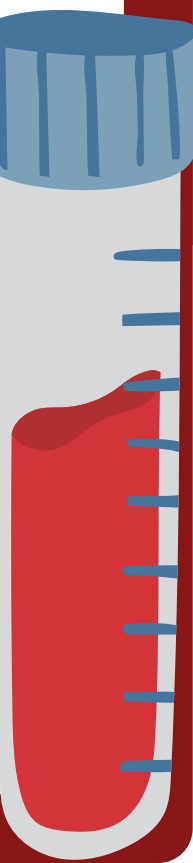
Quiz

What could be the cause for a cell to undergo apoptosis?

- A) DNA Damage
- B) Nutrient deficiency
- C) Radiation
- D) All of the above

Apoptosis can't kill which of the following?

- A) Cell infected with viruses
- B) Cell with DNA damage
- C) Cancer cells
- D) Immune cells



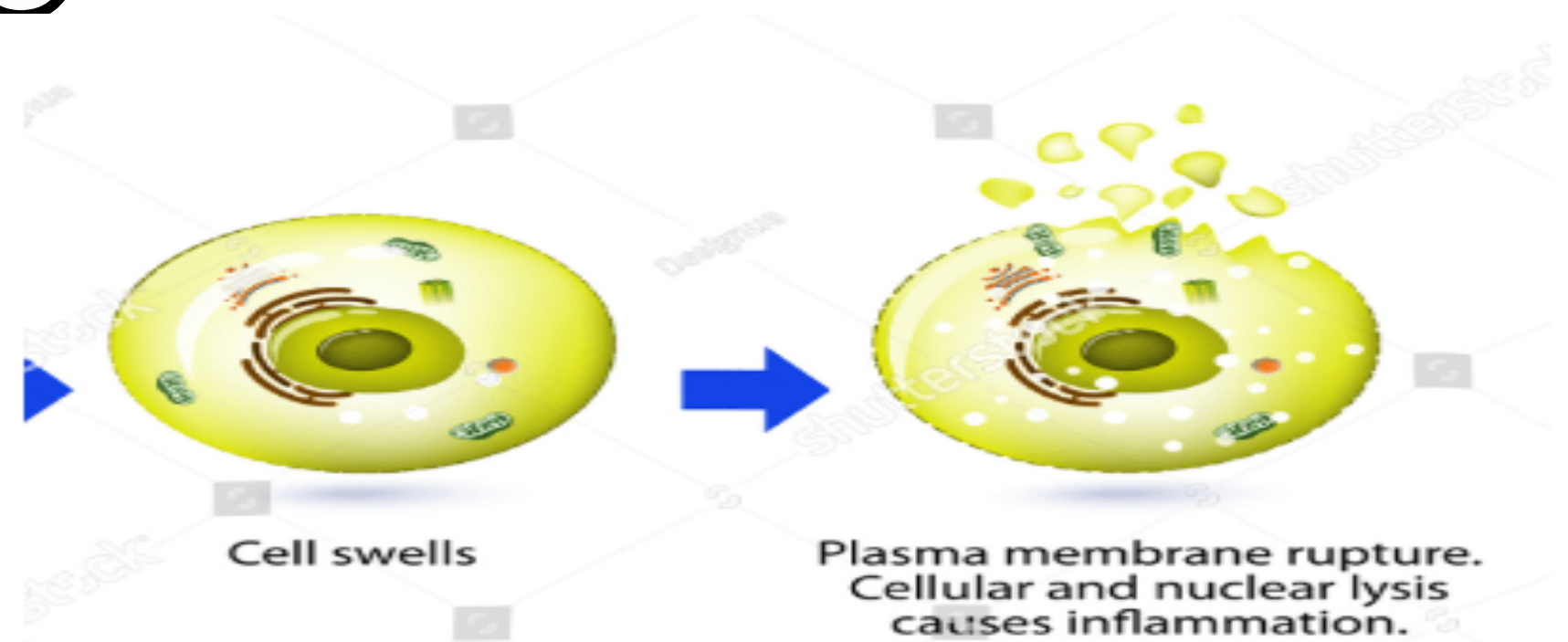


Quiz

Observe the given diagram:
Is it apoptosis?

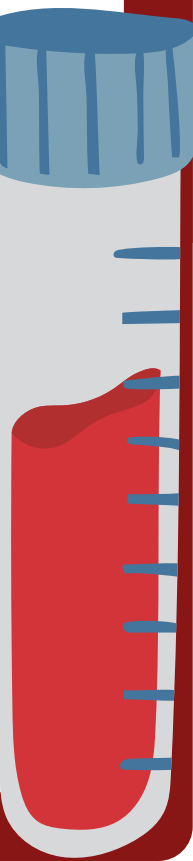
Yes.

No.



Which of the following cell organelle actively participates in animal apoptosis?

- A)Nucleus
- B)Mitochondria
- C)Lysosomes
- D)Vacuoles





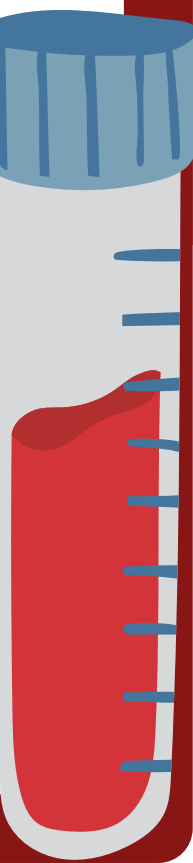
Quiz

What is Apoptosis?

- A) Cell programmed Death
- B) Inflammation of cell
- C) Phagocytosis
- D) Plasmolysis

Which is correct? (2)

- A) Necrosis is uncontrolled cell death
- B) Necrosis is programmed cell death
- C) Apoptosis is uncontrolled cell death
- D) Apoptosis is programmed cell death





Quiz

Caspases need to be cleaved to initiate apoptosis

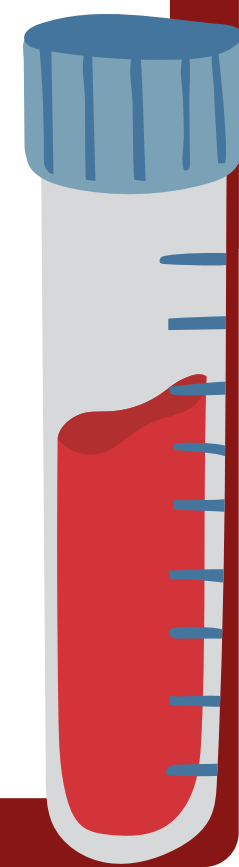
True

False

Select the most correct response:

Mitochondria are involved in:

- A) Intrinsic apoptosis
- B) Extrinsic apoptosis
- C) Cellular Apoptosis
- D) Signal transduction of apoptosis





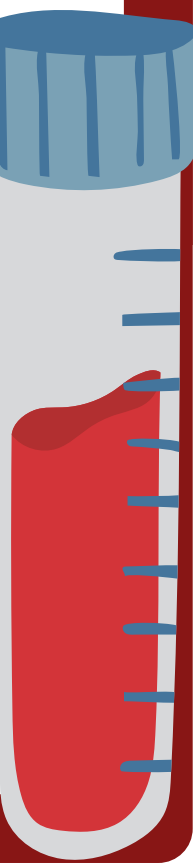
Quiz

Why is apoptosis required?

A) Glycolysis

B) Cell division: Meiosis and mitosis

C) Growth and elimination of threats such as viruses and DNA damage





Quiz

1)D

2)D

3)A/B/D

4)D

5)D

6)C

7)No

8)B

9)A

10)A/D

11)True

12)A

13)C

