



When does replication occur?

- A) G2 phase
- B) G1 phase
- C) S phase

When does initiation complex (ORC) form

- A) G2 phase
- B) G1 phase
- C) S phase

Quiz

A short sequence of RNA formed for initiation of DNA replication is called

A : Okazaki fragment



B : Primer

C : Telomere



D : Centromere





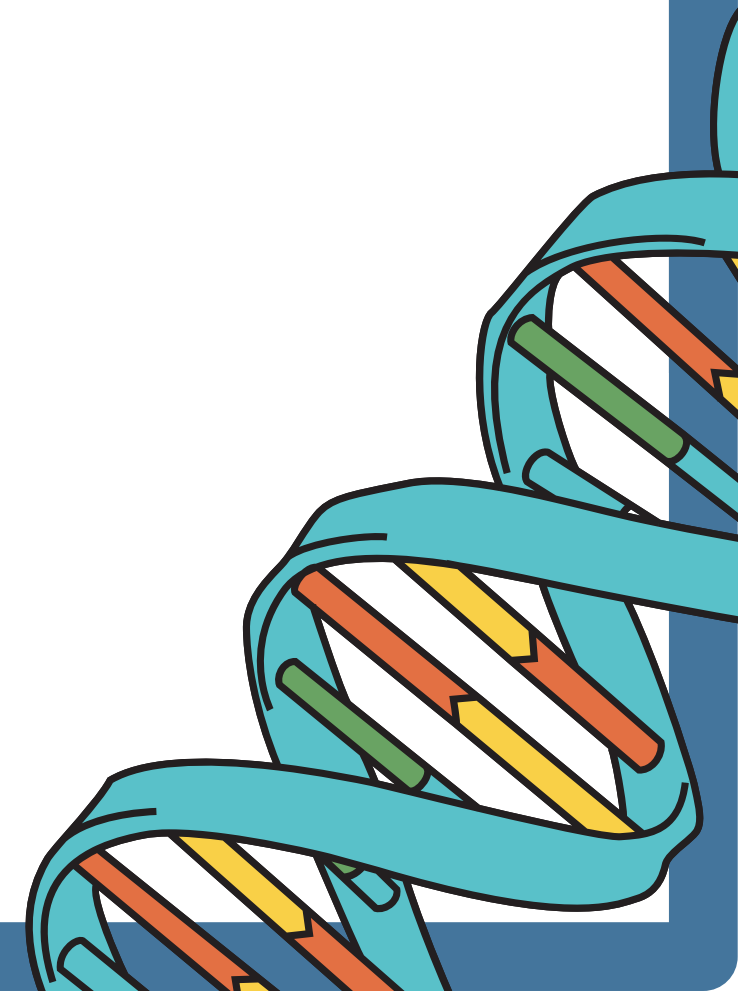
Quiz

DNA polymerase enzyme is used for the synthesis of?

- (A) DNA from RNA (B) DNA from DNA
(C) both a and b. (D) DNA from nucleosides

pre-replication complex composed of?

- A) CD-45 , GINS
B) Cdc6, Cdt1, MCM2-7
C) DNA POLYMERASE





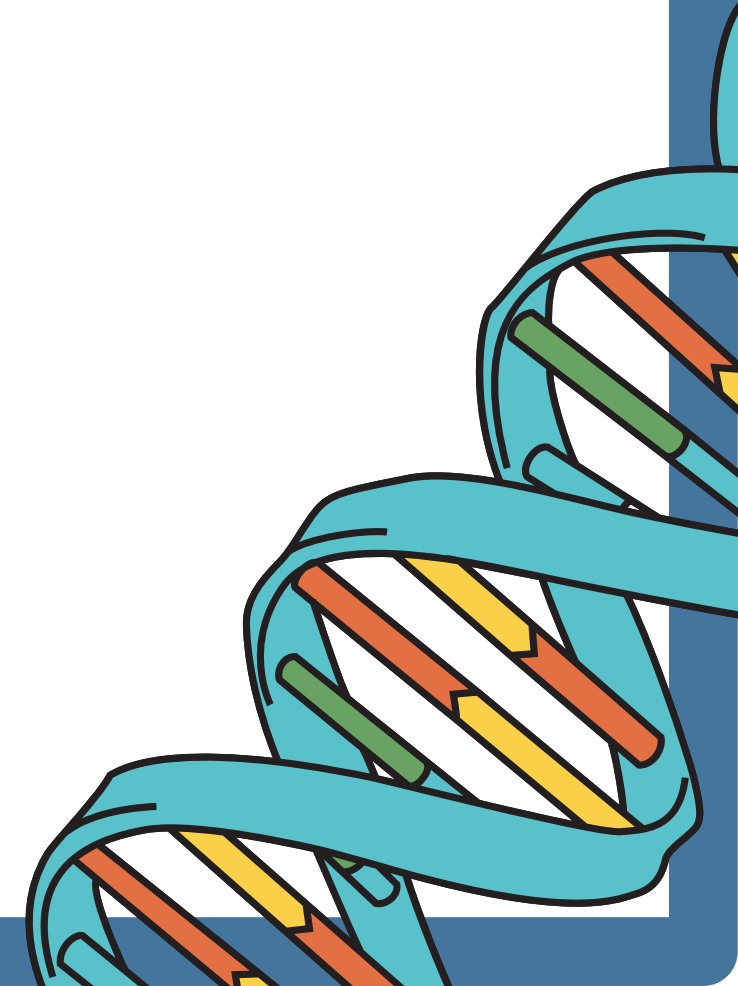
Quiz

All of the following are correct about Origin recognition complex except

- A) a complex of six proteins found in eukaryotes that is necessary to initiate DNA replication
- B) similar to DnaA
- C) don't requires ATP

recruits Cdt1 :

- A) requires ATP part of helicase loader
- B) helicase loader
- C) similar to DnaA





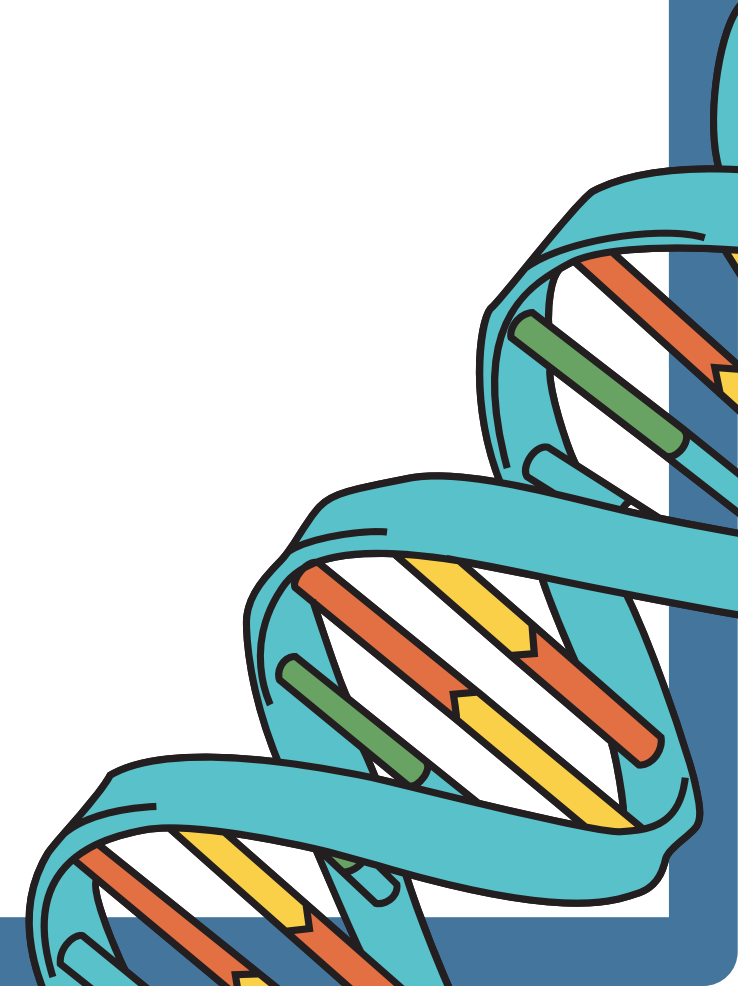
Quiz

helicase in eukaryotes:

- A) CDT1
- B) CDC6
- C) MCM

In the ___ phase, the ORC dictates where DNA helicases

- A) G2 phase
- B) G1 phase
- C) S phase





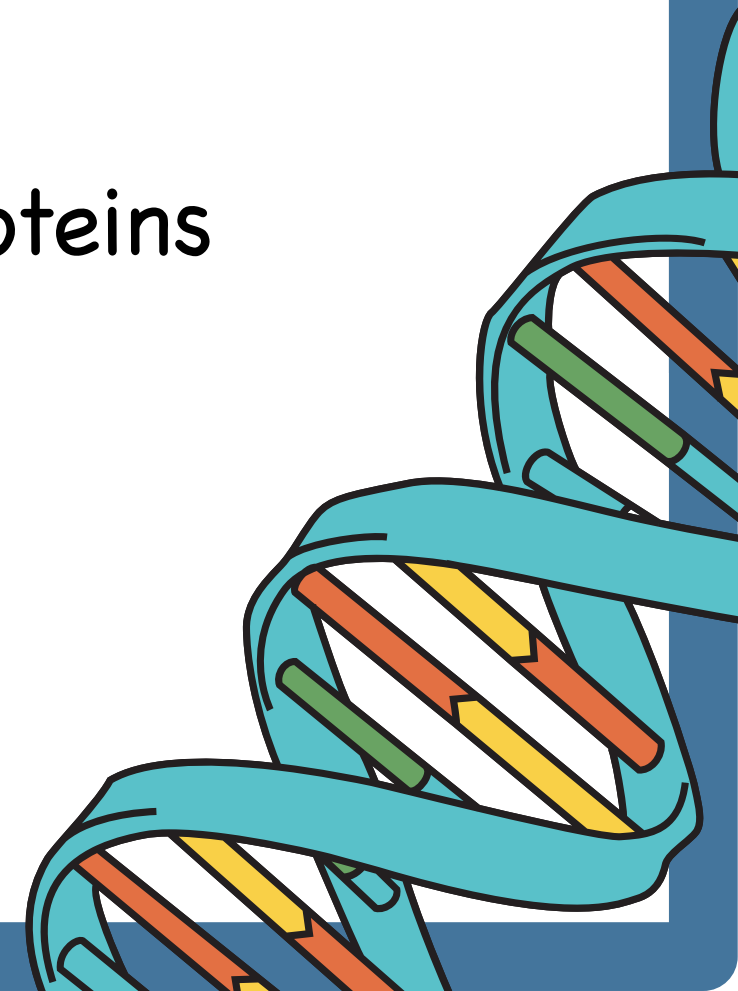
Quiz

the ORC binds to the sequence of DNA that will be "unzipped" and then replicated in the S phase (near to where the _____ lies)

- A) Origin of replication
- B) Replicator
- C) NONE

What does DDK target?

- A) Phosphorylation of these proteins results in the Cdc45 and GINS proteins
- B) two other replication proteins
- C) loaded helicase





Quiz

- 1)C
- 2)B
- 3)B
- 4)B
- 5)B
- 6)C
- 7)B
- 8)C
- 9)B
- 10)B
- 11)C

