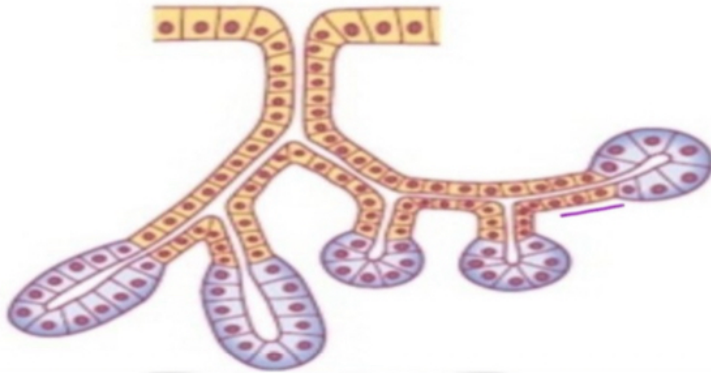


Histology Quiz

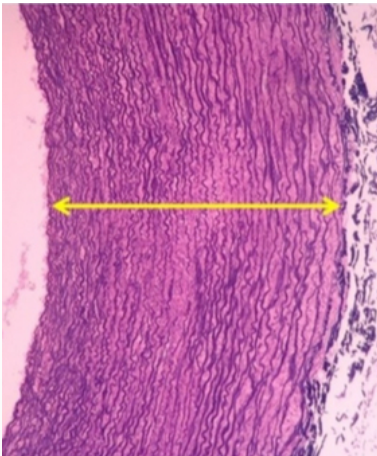
Q1. The gland shown in the image is:



- A. Compound branched acinar
- B. Simple unbranched tubular
- C. Compound unbranched tubuloacinar
- D. Simple branched acinar
- E. Endocrine

Answer: c

Q2. The connective tissue indicated by the yellow arrow can be found in:



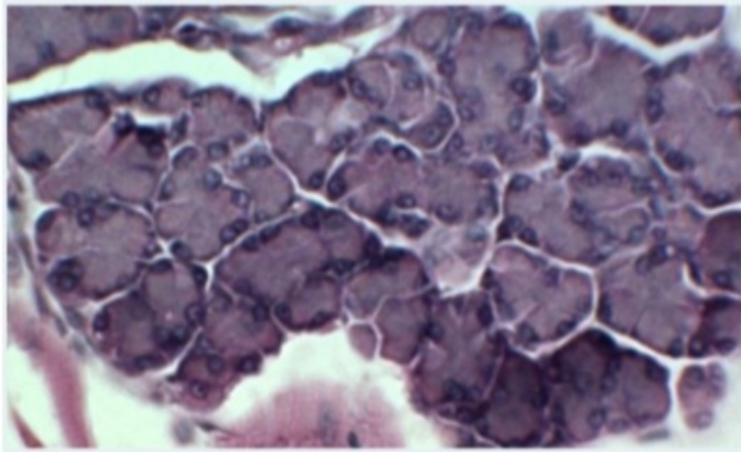
- A. Tendons
- B. The skin
- C. The aorta
- D. Lymph nodes
- E. The bone marrow

Answer: c



Scientific team

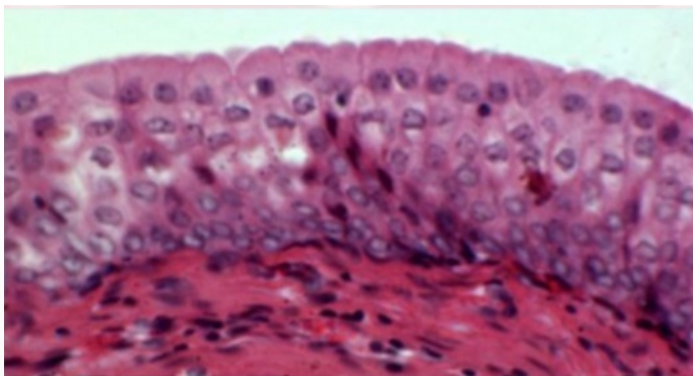
Q3. The secretory portions of a gland are shown in the image. Which of the following best describes the gland?



- A. It secretes mucus
- B. It's endocrine
- C. The method of secretion is apocrine
- D. The secretory cell is shed to the outside
- E. It's serous

Answer: E

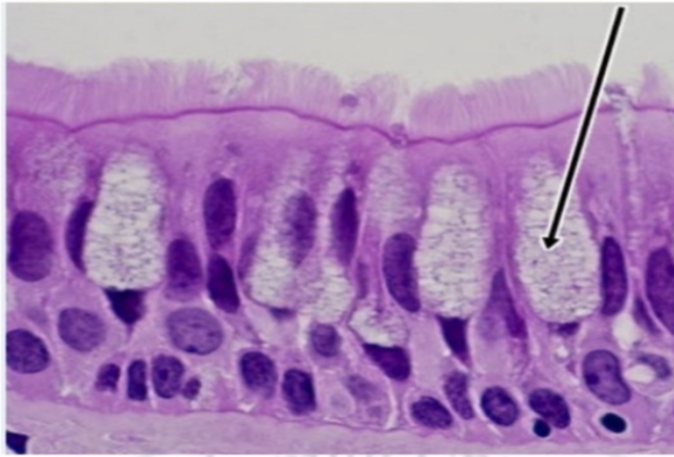
Q4. The epithelium shown could be found in:



- A. An empty urinary bladder
- B. The Stomach
- C. A full urinary bladder
- D. The skin
- E. The gallbladder

Answer: A

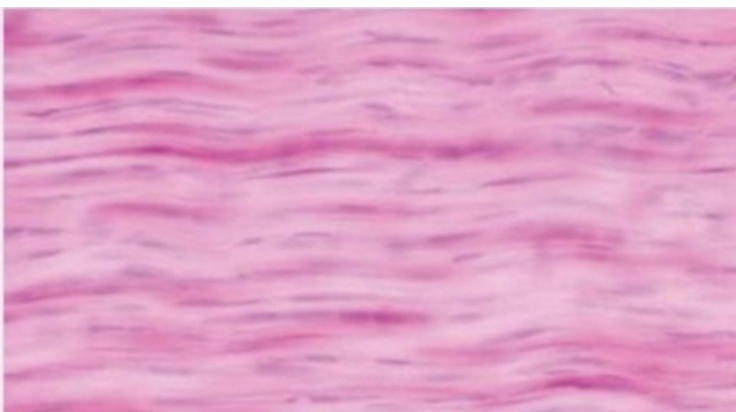
Q5. The epithelium shown is ___ and the cell indicated is ___ cell.



- A. Simple columnar. Goblet
- B. Pseudostratified. Goblet
- C. Transitional. Umbrella
- D. Pseudostratified. Serous
- E. Stratified columnar. Columnar

Answer: B

Q6. The connective tissue shown is:



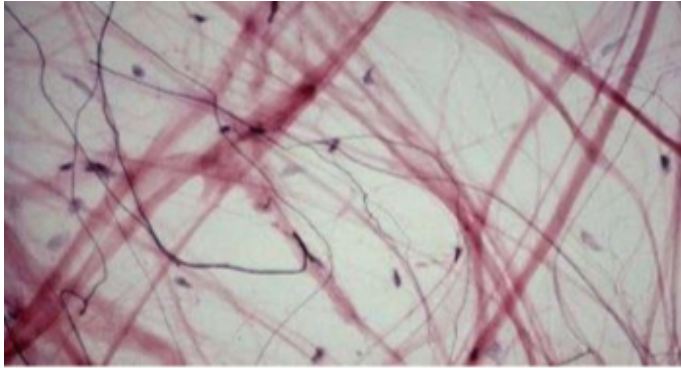
- A. Dense collagenous regular connective tissue
- B. Dense collagenous irregular connective tissue
- C. Bone tissue
- D. Elastic tissue
- E. Loose areolar connective tissue

Answer: A



Scientific team

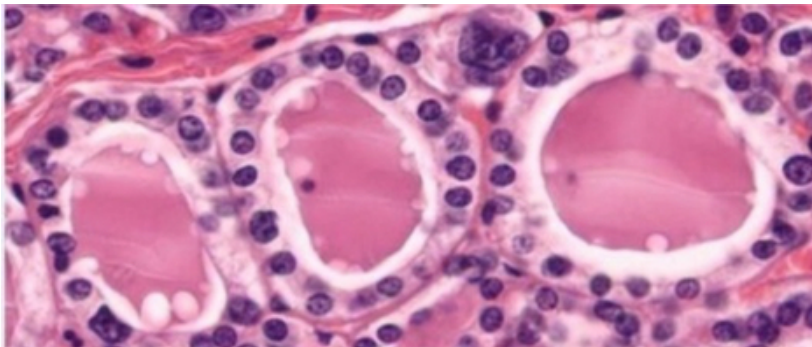
Q7. The connective tissue shown is found immediately under the epidermis. Which of the following is false about this connective tissue?



- A. The thick acidophilic structures are collagen fibers
- B. It's a dense collagenous regular connective tissue
- C. It's a loose areolar connective tissue
- D. The nuclei seen are mostly those of fibroblasts
- E. The thin dark structures are elastic fibers

Answer: B

Q8. The large circular structures shown in the image are lined by:



- A. Simple squamous epithelium
- B. Pseudostratified epithelium
- C. Transitional epithelium
- D. Simple cuboidal epithelium
- E. Simple columnar epithelium

Answer: D

