



Lecture: Anatomy Summary lec 1

Done By: Maria Adaileh

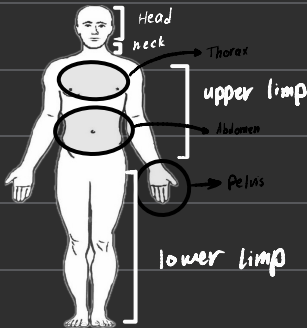
Introduction to human anatomy

anatomy = up (ana) + cutting (tome)

• Descriptive anatomy

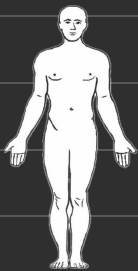
- ↳ Regional جزئي
- ↳ Systemic أجهزة
- ↳ Developmental Anatomy (Embryology) علم الأجنة
- ↳ Radiological Anatomy
- ↳ Surface Anatomy

Body Regions



1. Head and neck
2. 2. Abdomen and pelvis
3. Lower limb
4. Upper limb
5. Thorax
6. Brain and spinal cord

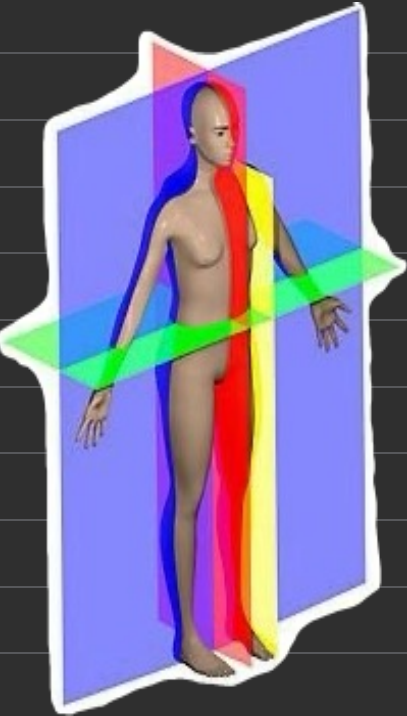
Anatomical position



- 'Person standing (body erect)
- 'Face directed forward
- 'Limbs at sides of body
- 'Legs and feet close together
- 'Palms directed forward

Anatomical planes

Median plane (midsagittal)
: in half (equal parts)



Parasagittal: Similar to
median (no equal parts)

Coronal planes: divides
body into anterior &
posterior parts

Horizontal (transverse)
divides body into upper
& lower parts

Anatomical terms

1. Medial = closer to midline
lateral = away from midline

2. Anterior (ventral) front
posterior (dorsal) back

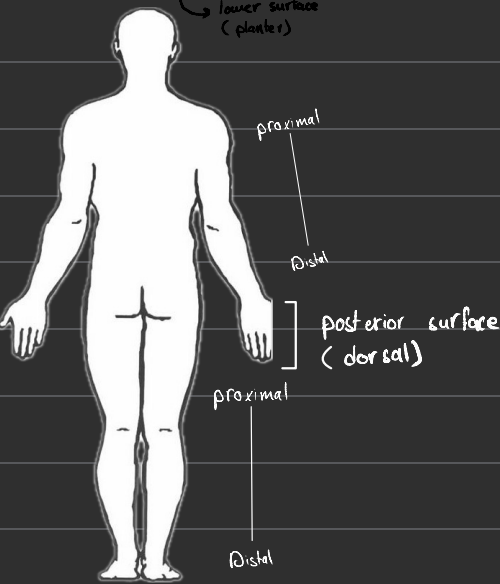
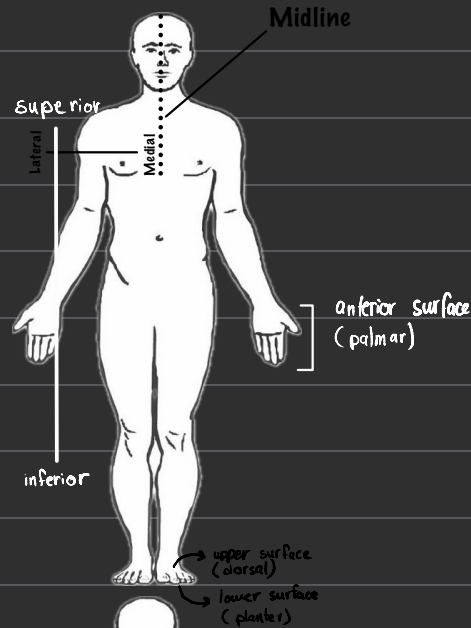
3. Superior (cephalic/cranial)
inferior (caudal)

4. proximal = closer to trunk
distal = away from trunk

5. superficial سطحي
Deep عميق

6. External (outer) = towards the surface
Internal (inner) = towards the cavity

7. Central = toward the centre
peripheral = away from the centre

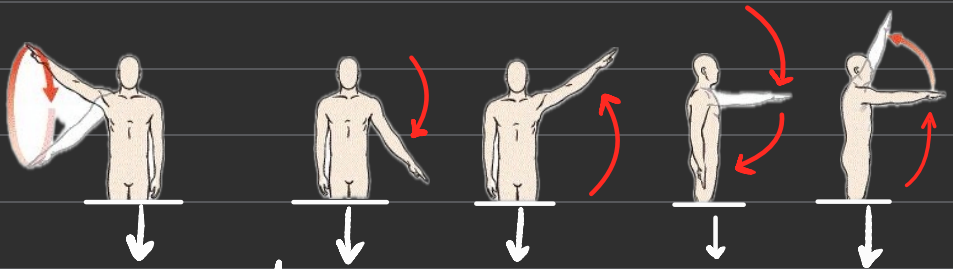


8. Ipsilateral = نفس الجهة
 Contralateral = الجهة العكسية

terms for limbs



Anatomical term of Movements



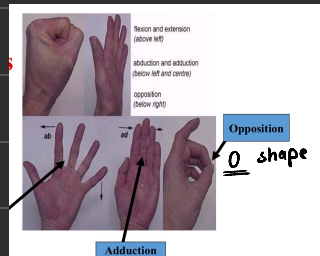
circumduction Adduction Abduction Extension flexion

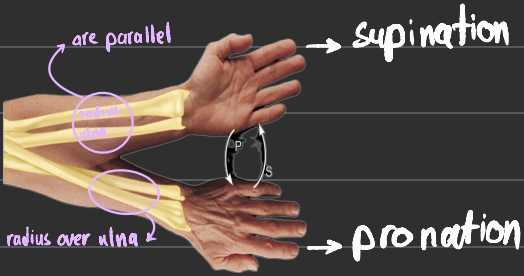


lateral rotation



medial rotation





jaw forwards
protraction

jaw backwards
Retraction



Inversion

Eversion



(upwards) Dorsiflexion



(downwards) plantar flexion

Body Cavities

(cranial cavity)

contains the brain



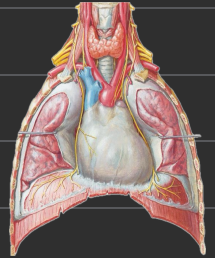
(vertebral cavity)

contains the spinal cord



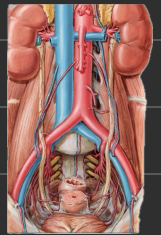
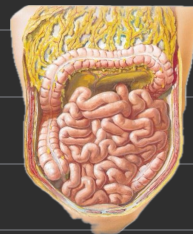
(Thoracic cavity)

contains the heart inside (pericardial cavity)
contains the lungs inside (pleural cavities)



(Abdominal cavity)

contains abdominal organs
"organ of gastro intestinal,
kidneys"



(pelvic cavity)

contains urinary bladder, rectum
uterus & ovaries

