

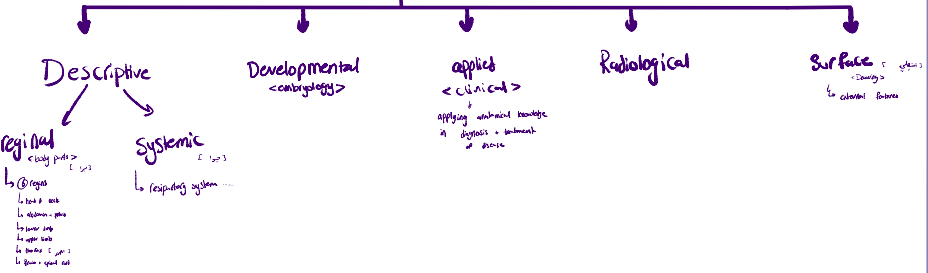


Lecture: 1

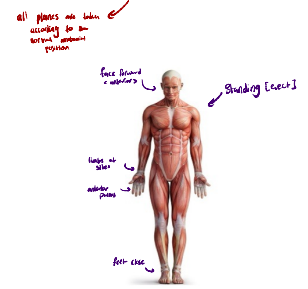
Done By: Wafaa Altarabsheh

# Lecture 1

# Anatomy Cutting up



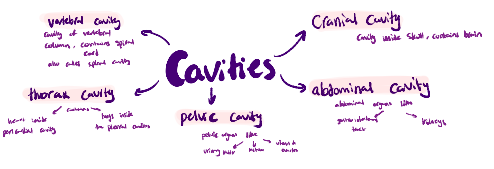
## Normal Anatomical position



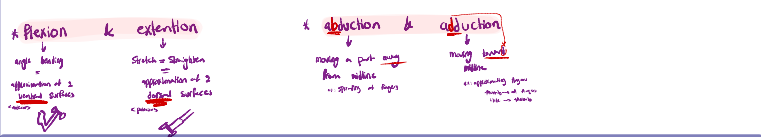
- regional** body parts
- ↳ Cervical
  - ↳ Thoracic
  - ↳ Abdominal
  - ↳ Pelvic
  - ↳ Perineal
  - ↳ Genital
  - ↳ Anus
- Systemic**
- ↳ respiratory system

Red ppt: same continue:

- Superficial & deep**
    - ↳ towards surface
    - ↳ away from surface
  - external & internal**
    - ↳ external = outside
    - ↳ internal = inside
  - ipsilateral & contralateral**
    - ↳ same side = ipsilateral
    - ↳ opposite side = contralateral
- When there is a cavity!



## Anatomical terms of movement:



## Opposition:



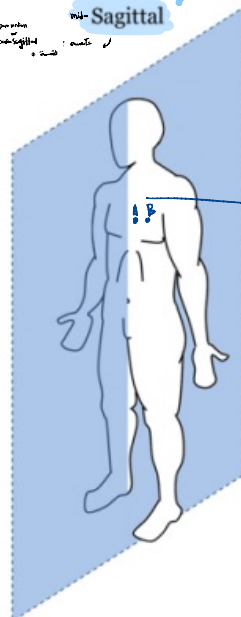
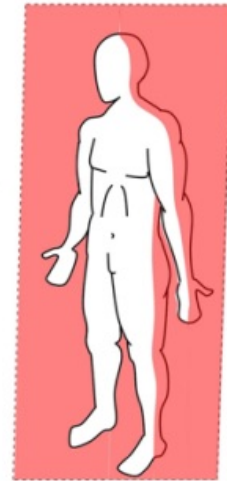
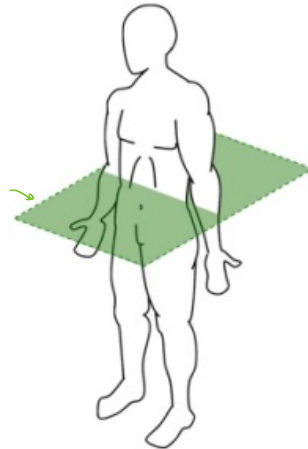
# Anatomical planes

Upper & lower  
**Transverse**  
 CT scan  
 also called: horizontal  
 ↓ to median

Front & back  
**Frontal**  
 also called: **frontal**  
 ↓ to median

right & left  
 also called: median  
**Mid-Sagittal**  
 superior & inferior  
 ↓ to median

cephalic & caudal  
 → used for axis & hand  
**Superior & inferior**  
 → used for axis & hand



head  
 → posterior anterior  
 ↓ dorsal = posterior  
**anterior & posterior**  
 vertical  
 ↓ dorsal

imp for leg  
 ↓ (P) (foot)  
 ↓ (ception)  
 → upper surface → dorsal  
 → lower surface → plantar

vertical in midline (right-left)

description: A is medial to B or B is lateral to A

↑ medial: closer to median  
 ↓ lateral: away from median  
 ↑ lower distal & away from trunk  
 ↓ higher proximal

2 points 2 points if 4 points

• forearm → radial - lateral  
 ulnar - medial  
 • leg → fibular - lateral  
 tibial - medial