



Scientific team

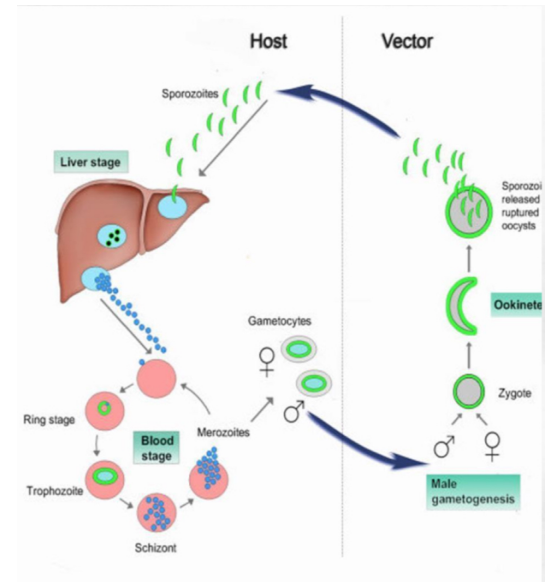
# Dr. Hala's Quiz (Parasitology and mycology)

Done by : Scientific team

1. This diagram represents a life cycle of a parasite . According to this life cycle , which of the following statements is INCORRECT?

- A. Vector is the definitive host
- B. Human is the definitive host
- C. Sporozoites is the infective stage for human
- D. Vector is essential for the life cycle
- E. RBC is the primary habitat

Answer: B



2. Which of the following statements concerning *Trichomonas vaginalis* is CORRECT?

- A. It is transmitted sexually
- B. It can be diagnosed by visualizing the cyst stage in the vaginal discharge
- C. It cause bloody diarrhea
- D. It causes vaginal thrush
- E. It is symptomatic in 70% of males

Answer: A

3. Kala-azar is a parasitic disease which is distributed in middle east . Which of the following statements concerning kala -azar is CORRECT?

- A. Kala-azar is caused by one of the sporozoa
- B. Kala-azar is transmitted by the bite of tsetse fly
- C. Kala-azar characterized by persistant fever and hypopegmentation of the skin



Scientific team

- D. Kala-azar can be diagnosed by finding amastigotes in the bone marrow
- E. Epimastigote is the infective stage for human

Answer:D

4. Which of the following statements concerning *Toxoplasma gondi* is INCORRECT?

- A. It can be transmitted across the placenta to the fetus
- B. It can be transmitted by the ingestion of food contaminated by cat feces
- C. It can cause encephalitis in immunocompromised patients
- D. It can cause severe congenital anomalies in fetus
- E. Human is the definitive host of the disease

Answer:E

5. This picture shows an egg of certain worm. What is true about this worm ?

- A. The infection by this worm can be diagnosed by finding quadrinucleated cysts in stool
- B. This worm is called human pinworm
- C. This can cause macrocytic anemia
- D. The infection can be acquired by human when filariform larvae penetrate the skin
- E. The mouth of this worm contains a pair of suckers on either side of the median line



Answer:D

6. A medical technologist visited Scandinavia and consumed raw fish daily for 2 weeks. Six months after her return home, she had routine investigation and was found to be anemic. Her vitamin B12 levels were below normal. The most likely cause of her vitamin B12 deficiency anemia is ?



Scientific team

- A. Infection with *Heterophyes heterophyes*
- B. Infection with *Ancylostoma duodenale*
- C. Infection with *Diphyllobothrium latum*
- D. Infection with *Entamoeba histolytica*
- E. Infection with *Taenia saginata*

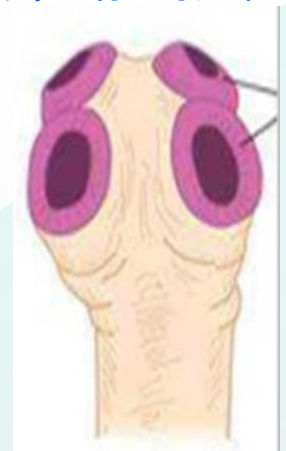
Answer:C

7. A 20-years-old man complains of several episodes of hematuria (blood in urin ). He is a college student but was born and raised in Egypt . Urinalysis shows many red cells , and several large eggs with terminal spines . You might expect him to have :

- A. Ascariasis
- B. Intestinal bilhariosis
- C. Urinary bilhariosis
- D. Leishmaniasis
- E. Amoebiasis

Answer:C

8. The diagram represents is scolex of one of the tapeworm . Intermediate host of this worm is?



- A. Salmon fish
- B. Pork
- C. Beef
- D. Snail
- E. Cyclops

Answer:C



Scientific team

9. Dermatophytes are fungi that ?

- A. Infect the superficial keratinized areas of the body
- B. Cause inapparent systemic infections
- C. Invariably invade the subcutaneous tissues
- D. Produce morphologically identical spores by all genera
- E. Best grow at 37 C

Answer:A

10. A 50-years-old woman receiving chemotherapy via a subclavian catheter for acute leukemia . She presented with fever and stiffness in the neck with clinical suspicion of meningitis . CSF culture grew budding yeasts that formed germ tubes. The organism most likely causing this infection is?

- A. Cryptococcus neoformans
- B. Candida albicans
- C. Aspergillus fumigatus
- D. Histoplasma capsulatum
- E. Candida tropicalis

Answer:B

11. Inhalation of fungal spores can cause primary lung infection . Of the following organisms , which one is most likely to be associated with this mode of transmission ?

- A. Aspergillus niger
- B. Histoplasma capsulatum
- C. Candida albicans
- D. Trichophyton
- E. Candida tropicalis

Answer:B



Scientific team

12. A 60-years-old man with a history of TB . Now he has a productive cough with bloody sputum . Chest X-ray reveals a round opaque mass in his left upper lobe . Culture of his sputum grew an organism with septate hyphae. The most likely causative organism is ?

- A. *Candida albicans*
- B. *Candida tropicalis*
- C. *Cryptococcus neoformans*
- D. *Aspergillus Fumigatus*
- E. *Aspergillus Niger*

Answer:D



Scientific team