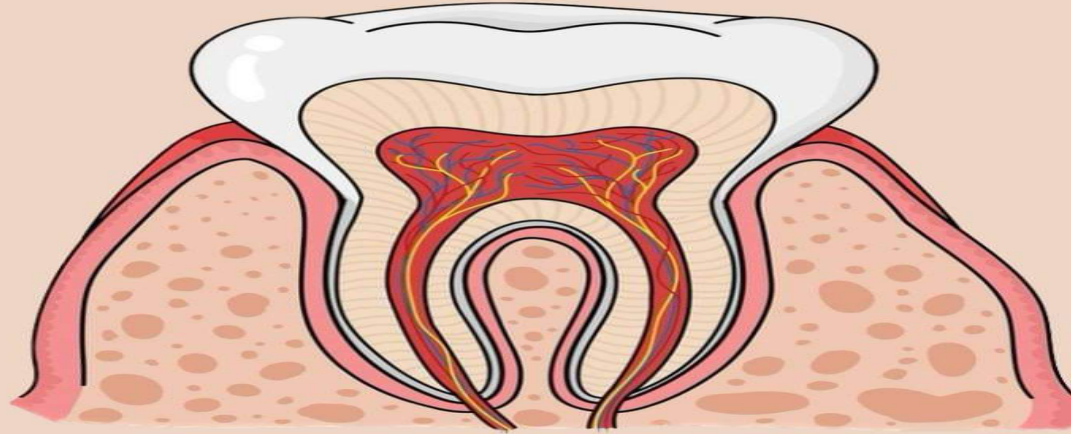




# ANATOMY



LEC NO. : 2  
DONE BY : Abdullah abu-saraya

وَقَالَ رَبُّ زِدْنِي عِلْمًا

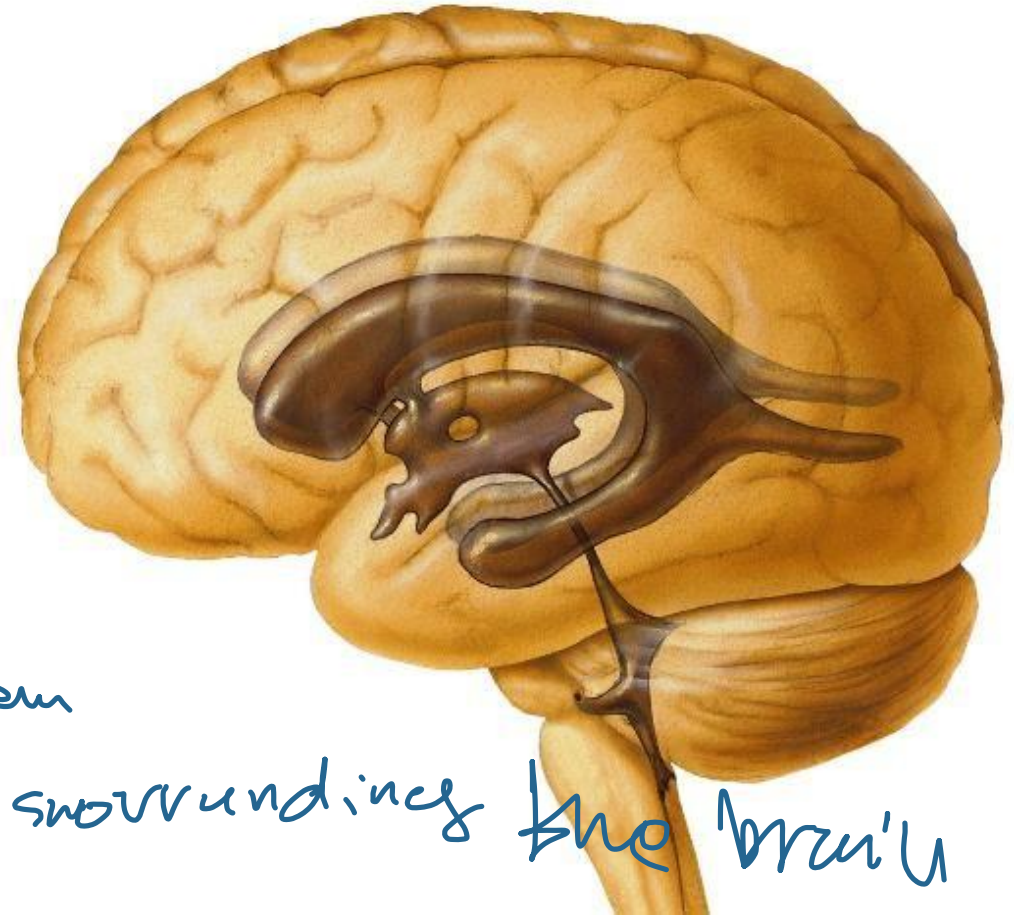
# Body Cavities

## 1. Cranial Cavity

\*The cavity inside the skull.

\*Contains the brain. part of nervous system

\*Meninges *three layers surrounding the brain*



## 2. Vertebral Cavity

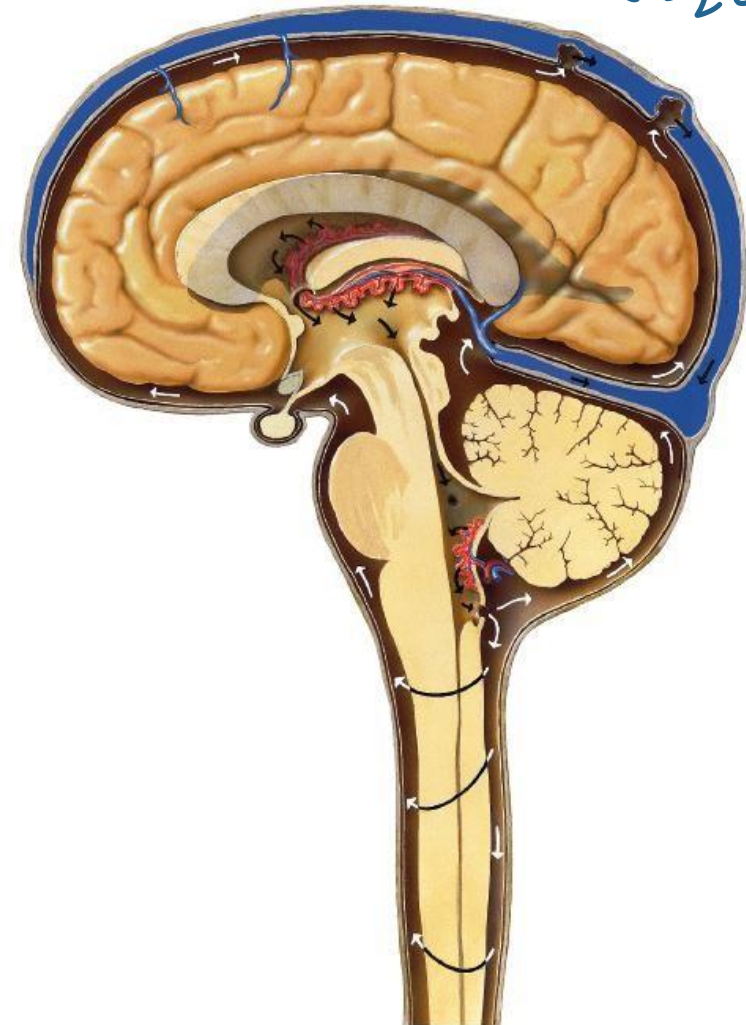
⑨ Cranial cavity

containing  
central nervous  
system

\*The cavity of  
the vertebral <sup>العمود الفقري</sup>  
column.

\* Contains the  
spinal cord.

\* Meninges



Part of axial skeleton

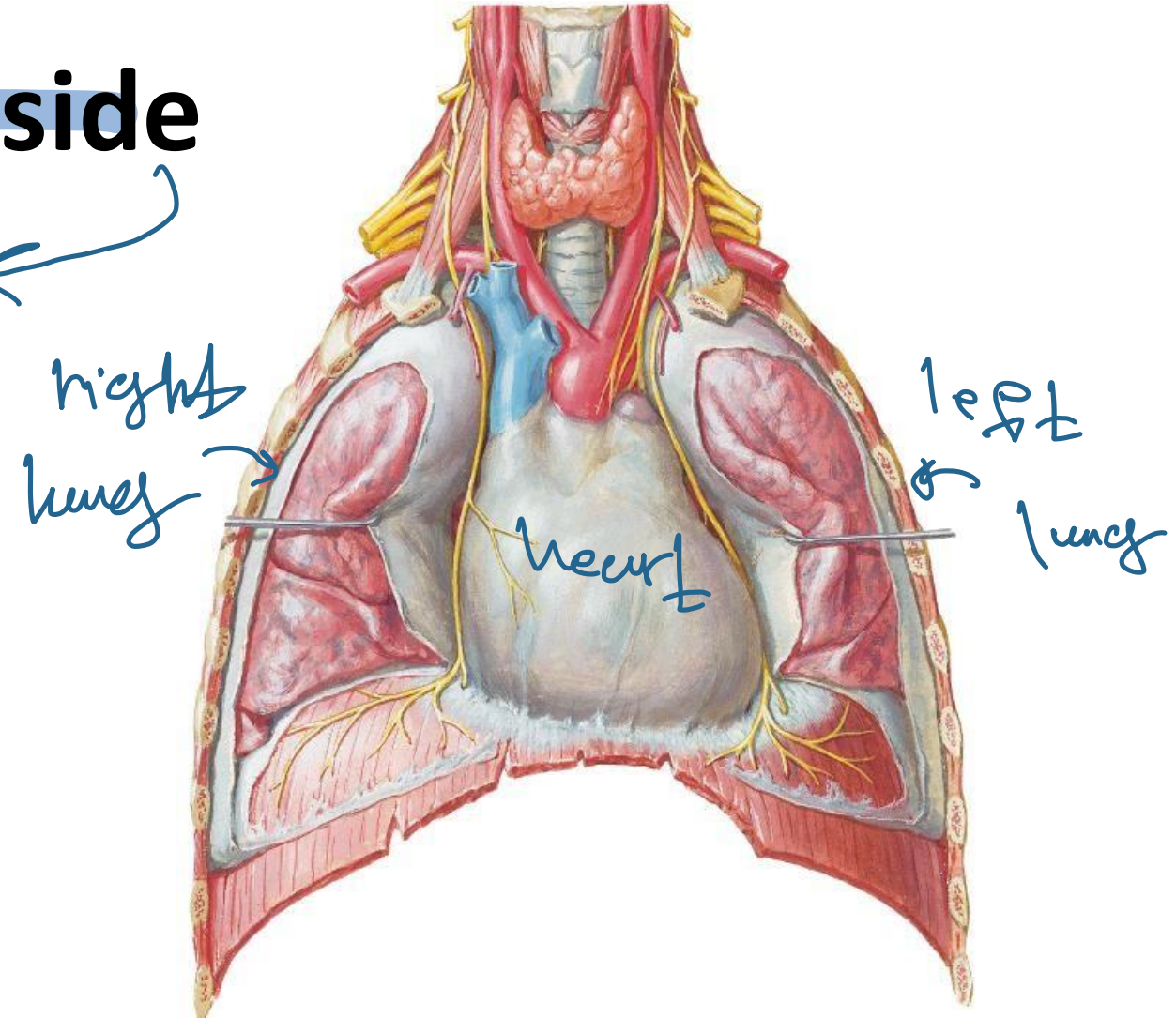
# 3. Thoracic Cavity

\* Contains the heart inside the pericardial cavity.

\* Pericardium

\* Contains the lungs inside the pleural cavities.

\* Pleura الغشاء الحيطي بالثديتين



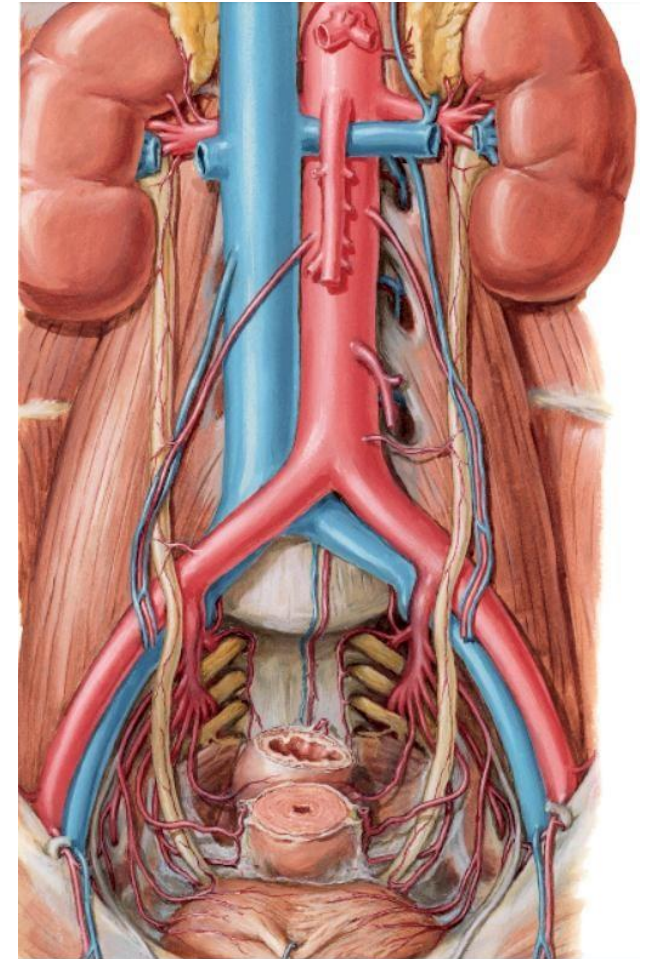
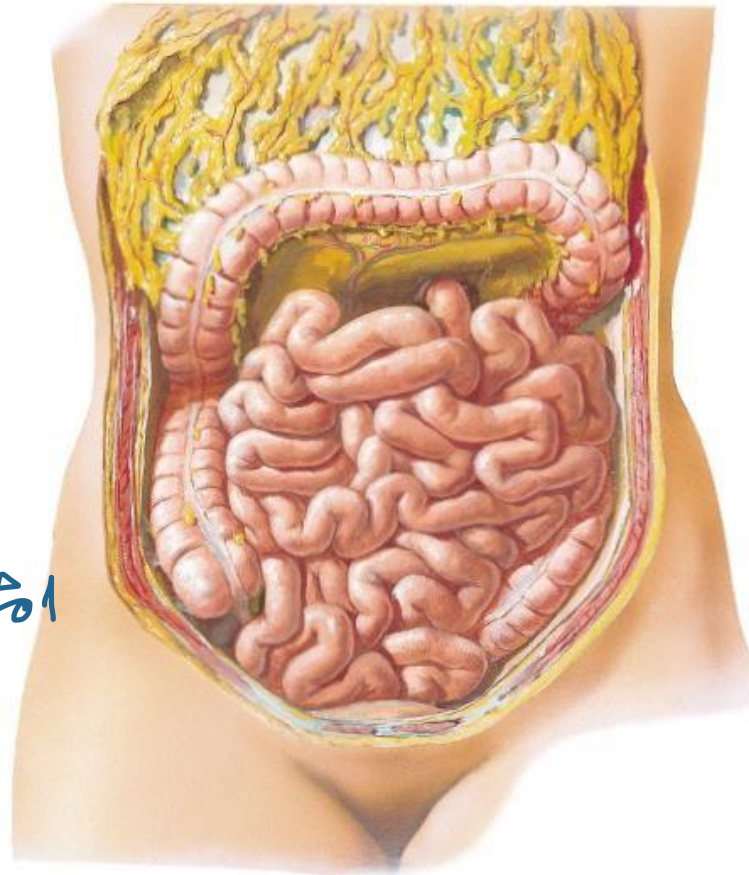
# 4. Abdominal Cavity

\* Contains abdominal organs such as organs of gastro-intestinal tract & kidneys.

\* Peritoneum

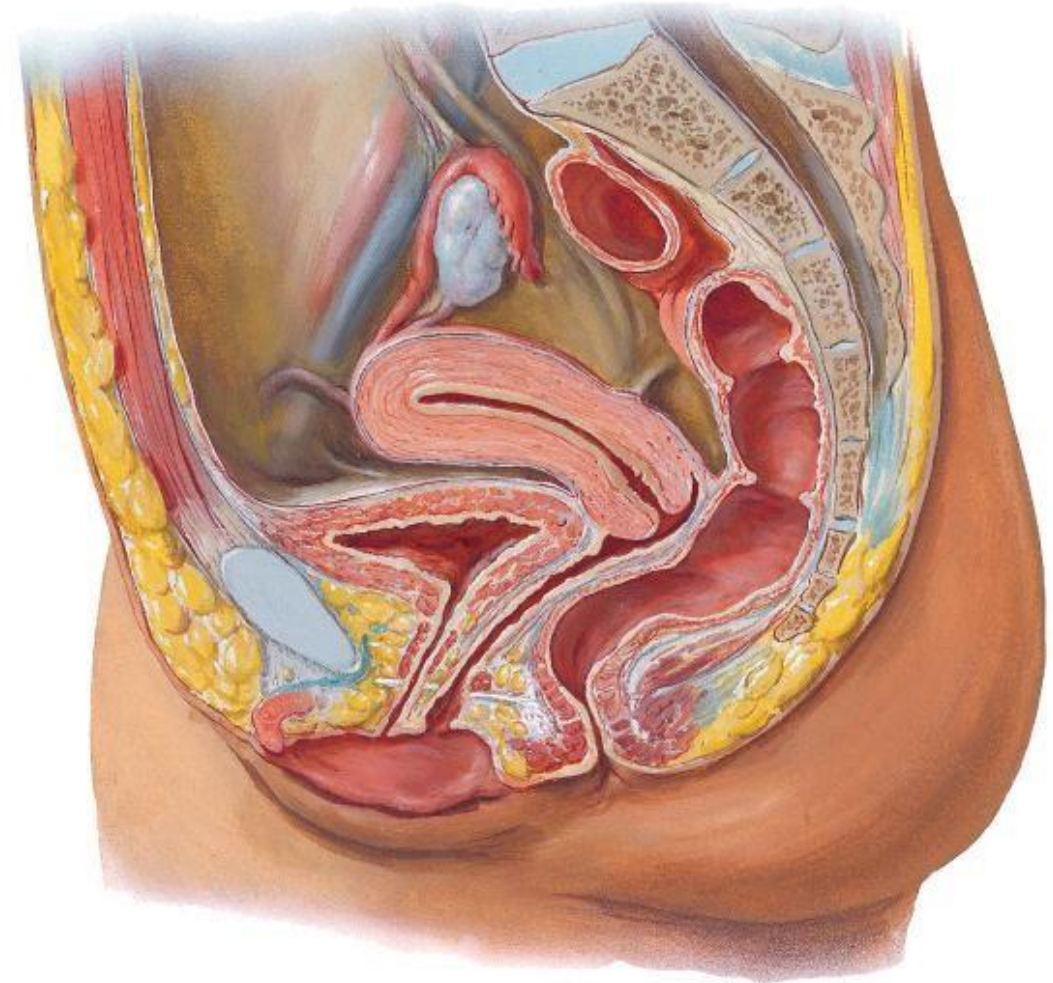
→ part of GI system

← GIT  
الأمعاء الدقيقة والكبيرة  
البنكرياس



# 5. Pelvic Cavity

\* Contains pelvic organs such as urinary bladder, rectum & uterus & ovaries (in females).





# Anatomy & Embryology

## Lecture 2: Skeletal System

**Dr. Jihad Alzyoud**  
**Associate Professor of Anatomy &  
Histology**

[Jihada@hu.edu.jo](mailto:Jihada@hu.edu.jo)  
[Jihada@staff.hu.edu.jo](mailto:Jihada@staff.hu.edu.jo)

# THE SKELETON

- \* It comprises cartilages, bones, ligaments & joints.  
*غضاريف* *عظام*  
*أربطة* *مفاصل*
- \* The bones are rigid and heavier than cartilages.  
*صلابة* *أثقل*
- \* Cartilages are more flexible and lighter.
- \* The younger the age, the greater is the contribution of cartilage to the skeleton.



## \* Divisions of the skeleton:

1. **Exoskeleton:** rudimentary in man.

It is represented by: nails & enamel of teeth .

الطبقة الخارجية  
للأسنان وهي

المسوسة ولا تحت إعطاء اللون البف للسن

2. **Endoskeleton:** about 206 bones & is formed of:

a. The axial skeleton.

b. The appendicular skeleton.

حرفي

# Regional classification of bones

\* The human skeleton is divided into:

1. Axial skeleton: which includes skull, vertebral column, ribs & sternum.

2. Appendicular skeleton: which includes the bones of the appendages (upper & lower limbs) & their girdles (shoulder & pelvic).

→ *الجزء / الجزء*  
→ connected to the axial



Thank You  
Thank You  
Thank You!!!!