

done by : Rama Alwraikat

lecture no : Lec 6 - Mandible



General Anatomy

Lecture 6: Mandible & Vertebral Column

Dr. Ashraf Ramzy
Professor of Anatomy & Embryology
ash-ramzy@hotmail.com

Mandible

Its classified as Facial bone, single bone, only movable bone.
Its the largest and longest bone of the skull bones.

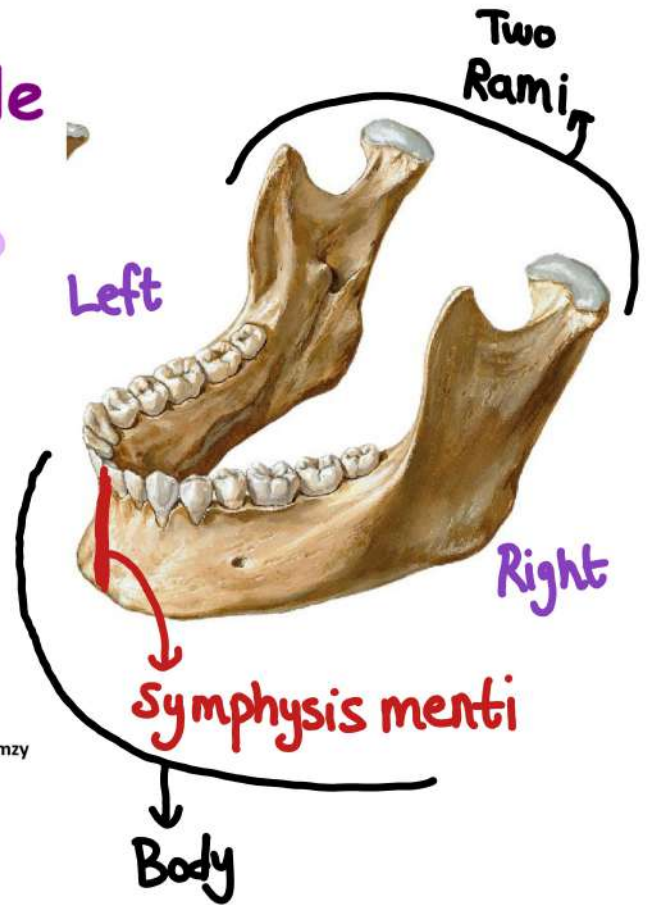


Mandible

** Is formed of two bones, (right and left) which unite at the symphysis menti after the first year. → joint

يقدم أو يلتصم

** The mandible is formed of a body and two rami. → ذراع



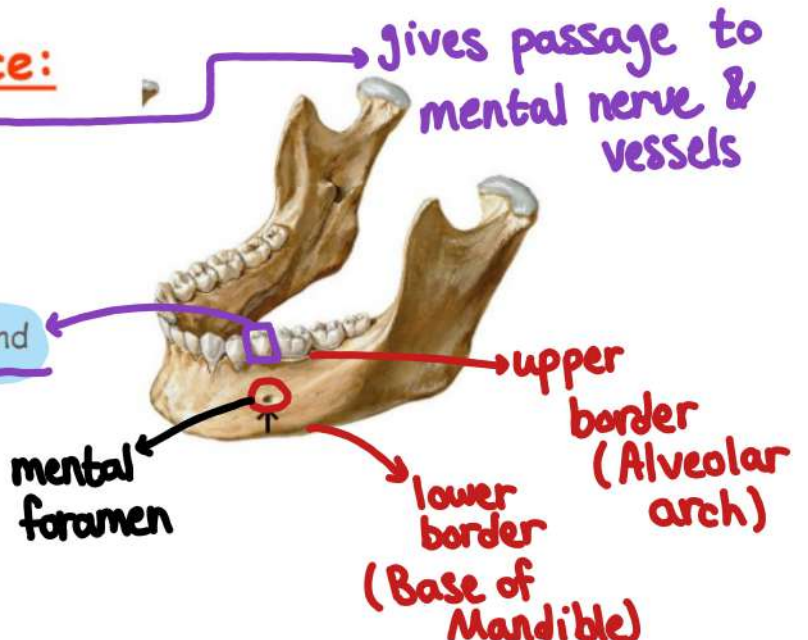
Dr Ashraf Ramzy

* Symphysis menti
↓
second cartilaginous joint

A. The body

* External surface:

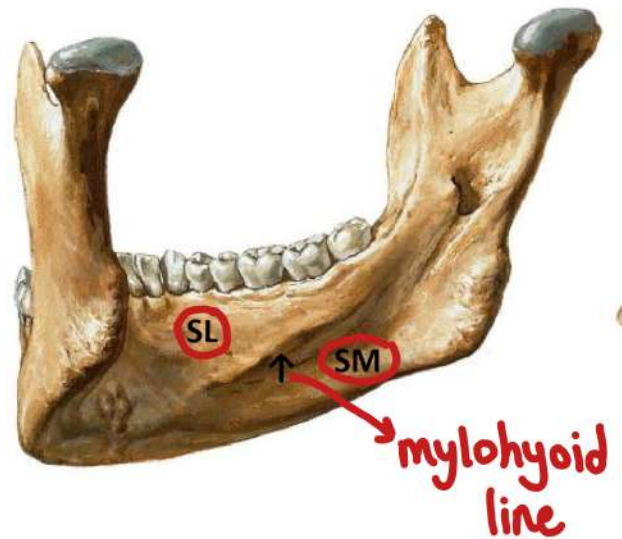
* The mental foramen lies midway between upper & lower borders, below 2nd premolar tooth.





*** Internal surface :**

- It shows the **mylohyoid line** (↑).
- Below this line is the **submandibular fossa (SM)**, while above this line is the **sublingual fossa (SL)**.



Dr Ashraf Ramzy

* Sublingual fossa $\xrightarrow{\text{فيه}}$ Sublingual Gland

* Submandibular fossa $\xrightarrow{\text{فيه}}$ Submandibular Gland

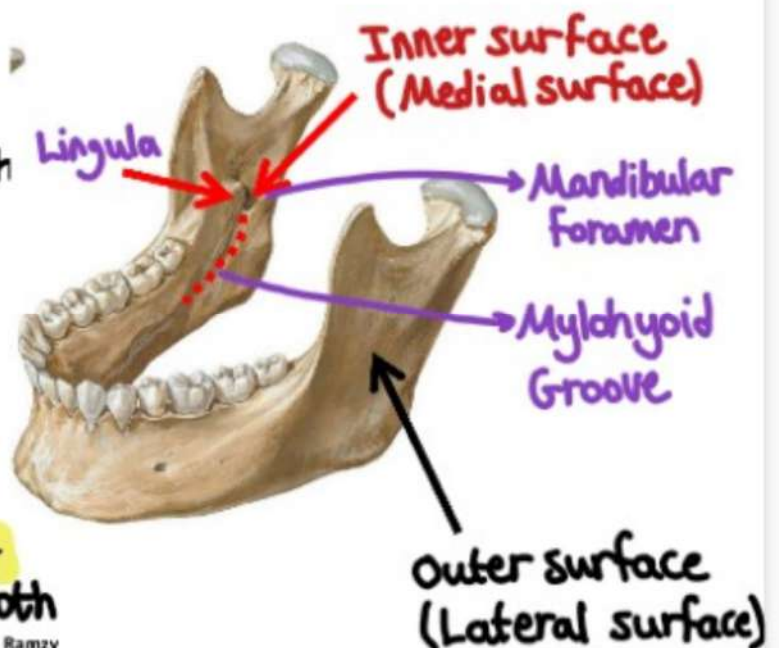
B. Ramus of mandible

* It has two surfaces.

1. **The medial surface:** shows the **mandibular foramen** which leads to **mandibular canal**.
 • Projecting over the foramen is the **lingula**.
- The **mylohyoid groove** starts at the lower border of the foramen.

2. **The lateral surface:** is **flat smooth**

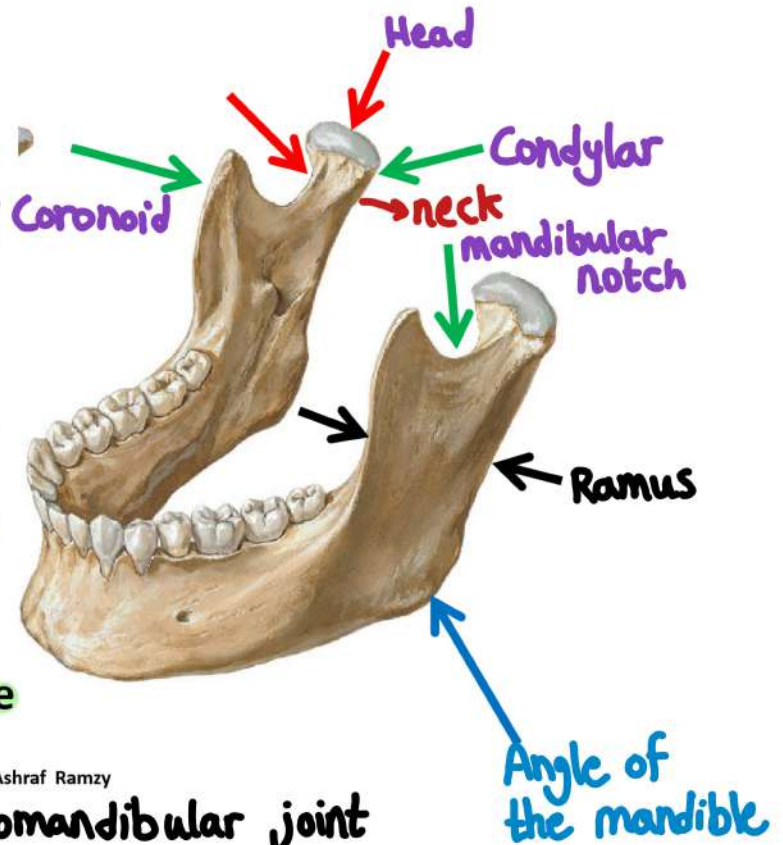
Dr Ashraf Ramzy





**** Upper border:**

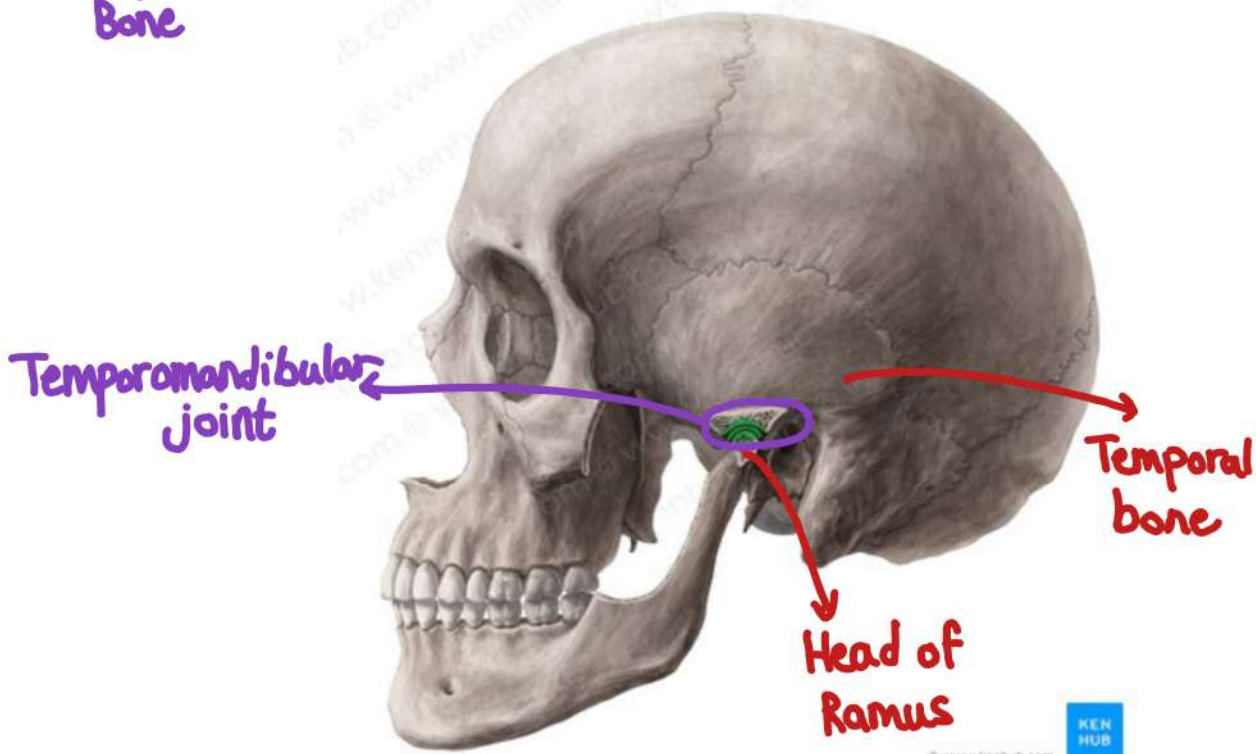
- Shows two process **coronoid** anteriorly and **condylar** process posteriorly and in between the **mandibular notch**.
- The **condylar process** is expanded to form the **head** of the mandible.
- The **constricted area** below the head is the **neck**.
- **Angle** of the mandible is the area of meeting of body and the ramus .



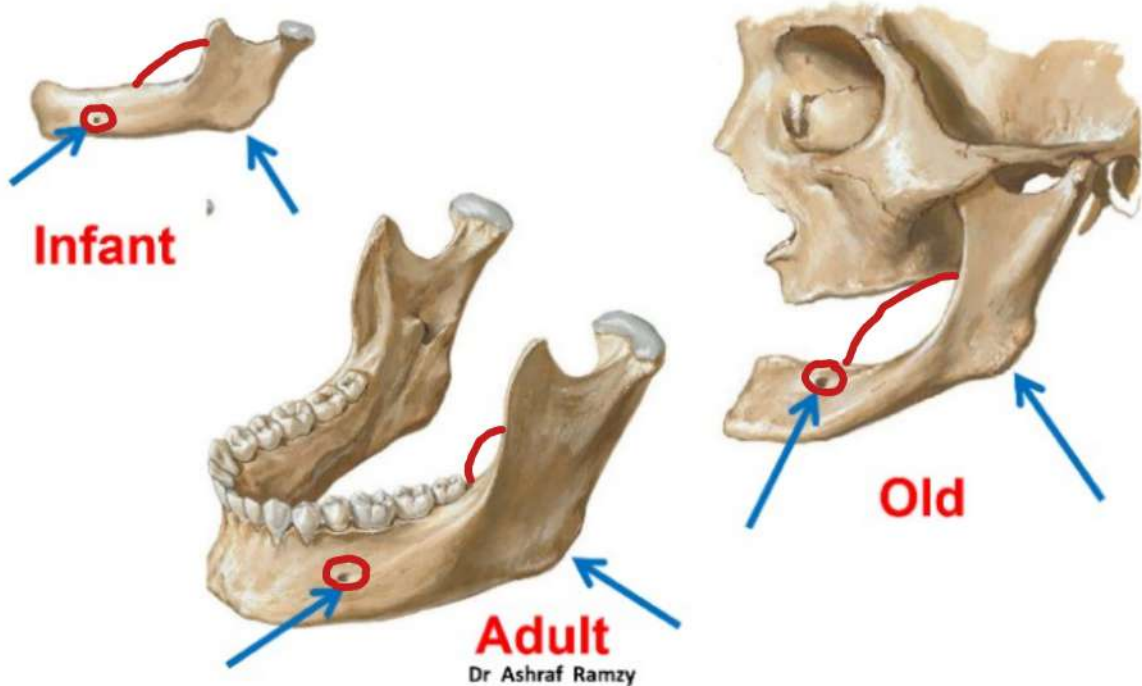
623

Dr Ashraf Ramzy

* Head of mandible + Skull → Temporomandibular joint
 ↓
 Temporal Bone



Age changes of the mandible



*Mandibular Foramen

- Infant → closer to the base (lower border)
- Adult → midway between upper & lower borders
- Old → closer to the upper border

*Angle

- Infant → Obtuse angle زاوية منفرجة
- Adult → Obtuse angle to right angle زاوية منفرجة إلى قائمة
- Old → more obtuse angle زاوية منفرجة كبيرة

Right Angle → 90°

Obtuse Angle → more than 90° & less than 180°



قليلًا مِنَ التَّفَاوُلِ يَصْنَعُ أَلْفَ طَرِيقٍ نَحْوَ السَّعَادَةِ..
بالتوفيق



#النادي_الطبي
#معكم_خطوة_بخطوة