



Quiz

1) Prolonged exposure of cells to adverse or exaggerated normal stimuli which evokes various changes at the level of individual cells, tissues or whole organs is known as what?

- A) Altered cells
- B) Cell alteration
- C) Cell adaptation
- D) Cell variation

2. Hypertrophy

- (a) occurs after partial hepatectomy
- (b) increases function of an organ exponentially
- (c) is triggered by hormonal stimulation
- (d) occurs after denervation
- (e) is usually pathological

3). A 45-year-old woman is investigated for hypertension and is found to have enlargement of the left kidney. The right kidney is smaller than normal. Contrast studies reveal stenosis of the right renal artery. The size change in the right kidney is an example of which of the following adaptive changes?

- (A) Aplasia
- (B) Atrophy
- (C) Hyperplasia
- (D) Hypertrophy
- (E) Metaplasia





Quiz

4) the photo describe

- A) pathological hypertrophy
- B) physiological hypertrophy
- C) physiological hyperplasia
- D) non of the above



5) When cells decrease in size due to wasting of an organ or structure, this type of cellular adaption is known as _____.

- a. atrophy
- b. hypertrophy
- c. hyperplasia
- d. Metaplasia



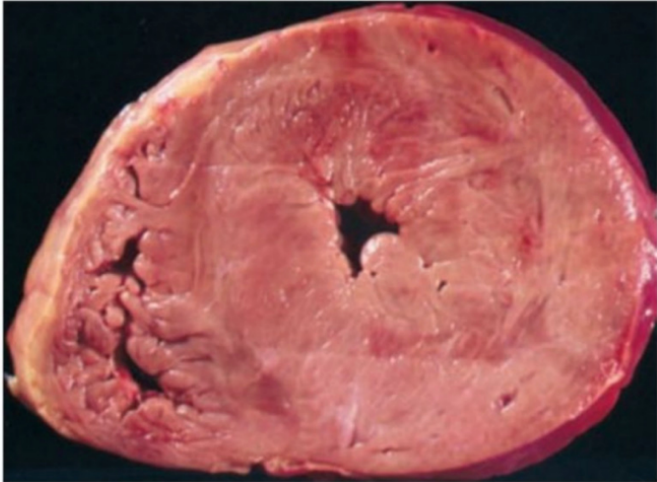


Quiz

6) Listed below are characteristic of atrophy and hypertrophy EXCEPT

- A) Hypertrophy occurs due to increase amounts of structural proteins and organelles
- B) Hypertrophy only occurs in permanent cells
- C) Aging is a cause of atrophy
- D) Atrophy occurs due to decreased protein synthesis, increased protein degradation in cells & autophagy

7. The illustration shows a section of the heart from a 45-year-old African-American man with long-standing hypertension who died of a "stroke." Which of the following adaptive changes is exemplified in the illustration?



- (A) Aplasia
- (B) Atrophy
- (C) Hyperplasia
- (D) Hypertrophy
- (E) Hypoplasia





Quiz

Answers

- 1)c
- 2)c
- 3)B
- 4)B
- 5)A
- 6)B
- 7)D

Done by Anas Zakarneh

