



*Anatomy
Passion*



Lecture: Anatomy "Lab 9"
Done By: Sura Jawarneh

بِسْمِ اللَّهِ الرَّحْمَنِ الرَّحِيمِ

Lab 9

CVS

Anterior view

جايه من ال
Head, Neck
& Brain

جايه من ال
Upper limb

Coronary groove
* ماسي فيه ال
Coronary sinus
⊕
Coronary artery

Internal Jugular vein
(Right)

Subclavian Vein
(Right)

Brachiocephalic Vein
(Right)

Superior Vena Cava

Right Auricle

Right Atrium

Right Ventricle

Subclavian Artery
(Left)

Left Common Carotid artery

Brachiocephalic Vein
(Left)

Ascending Aorta

Pulmonary Trunk

Left Auricle

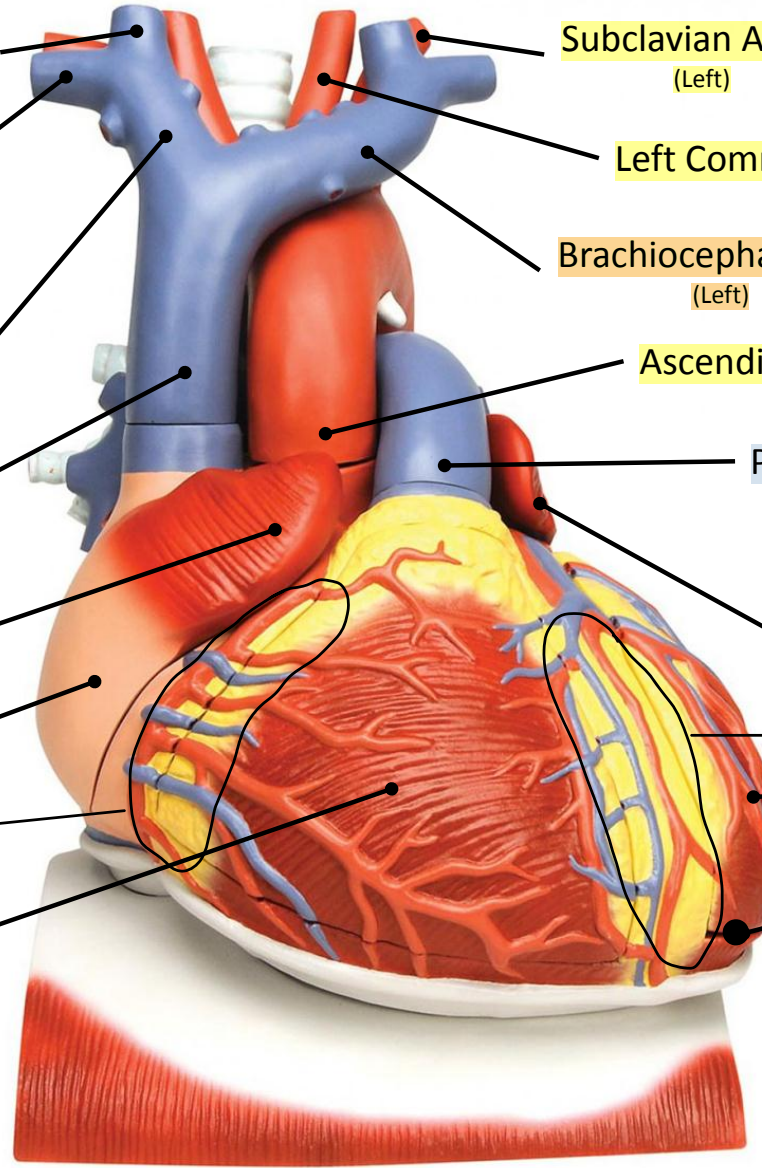
Groove (Anterior interventric
groove)

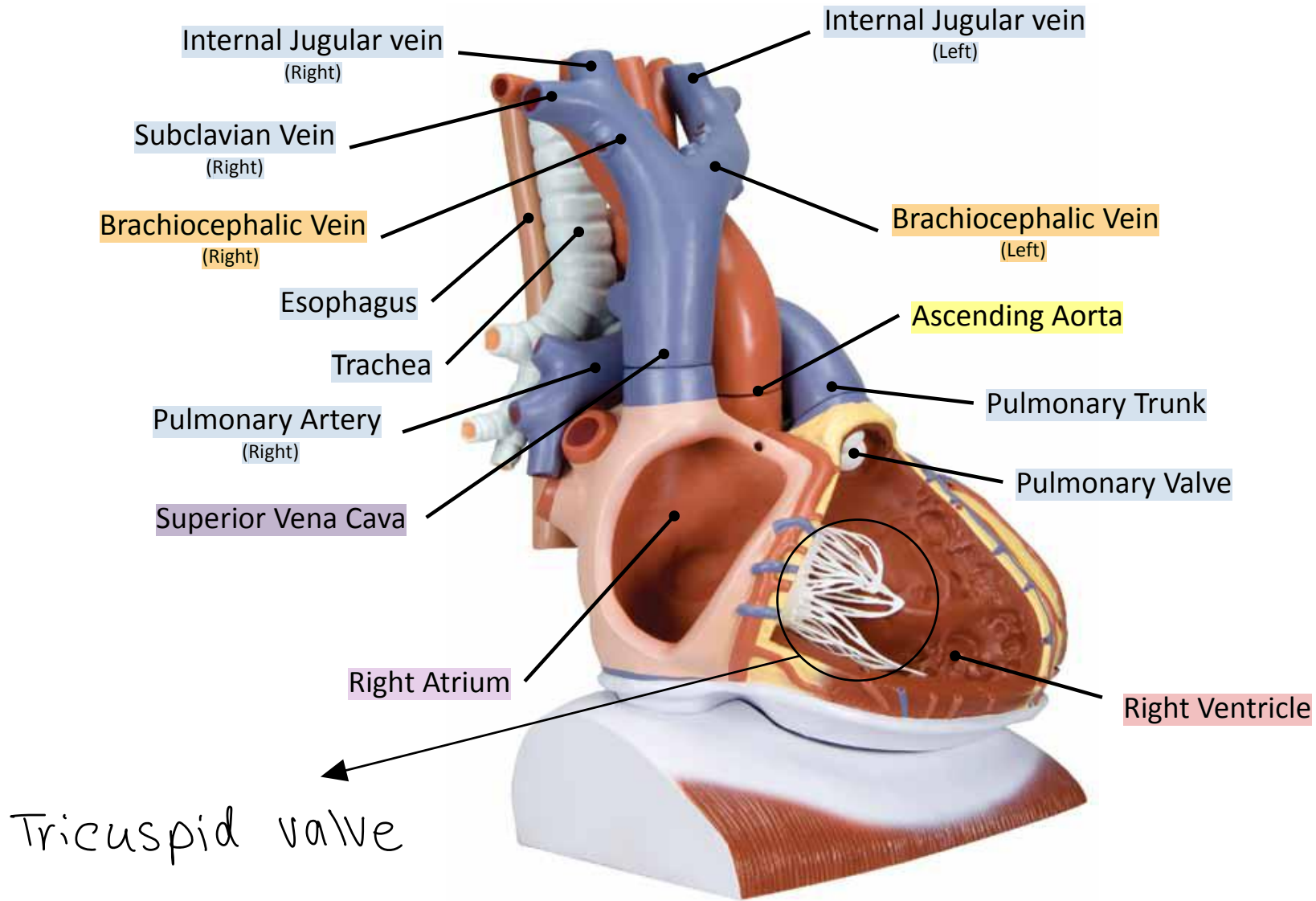
Left Ventricle

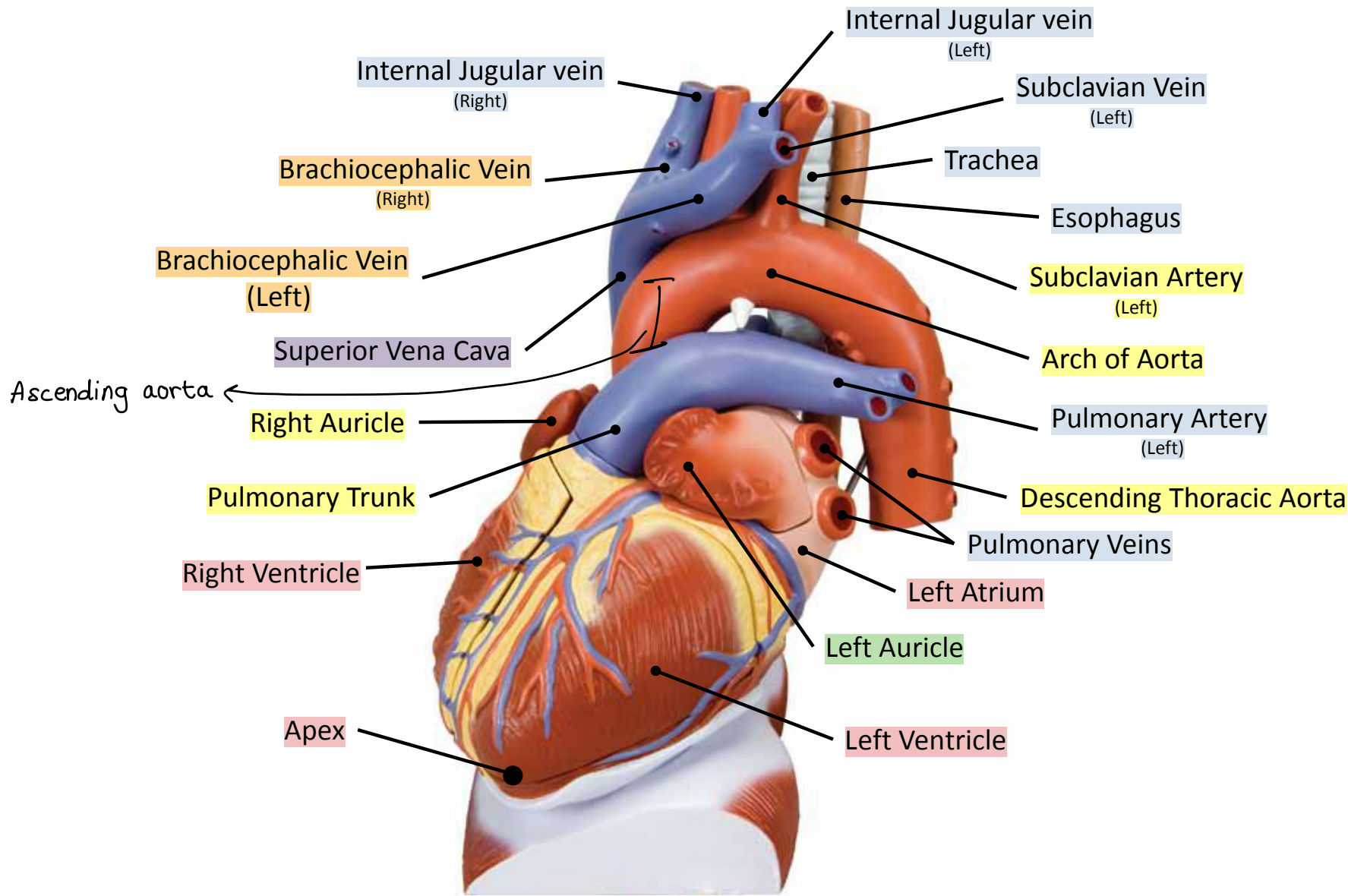
Apex

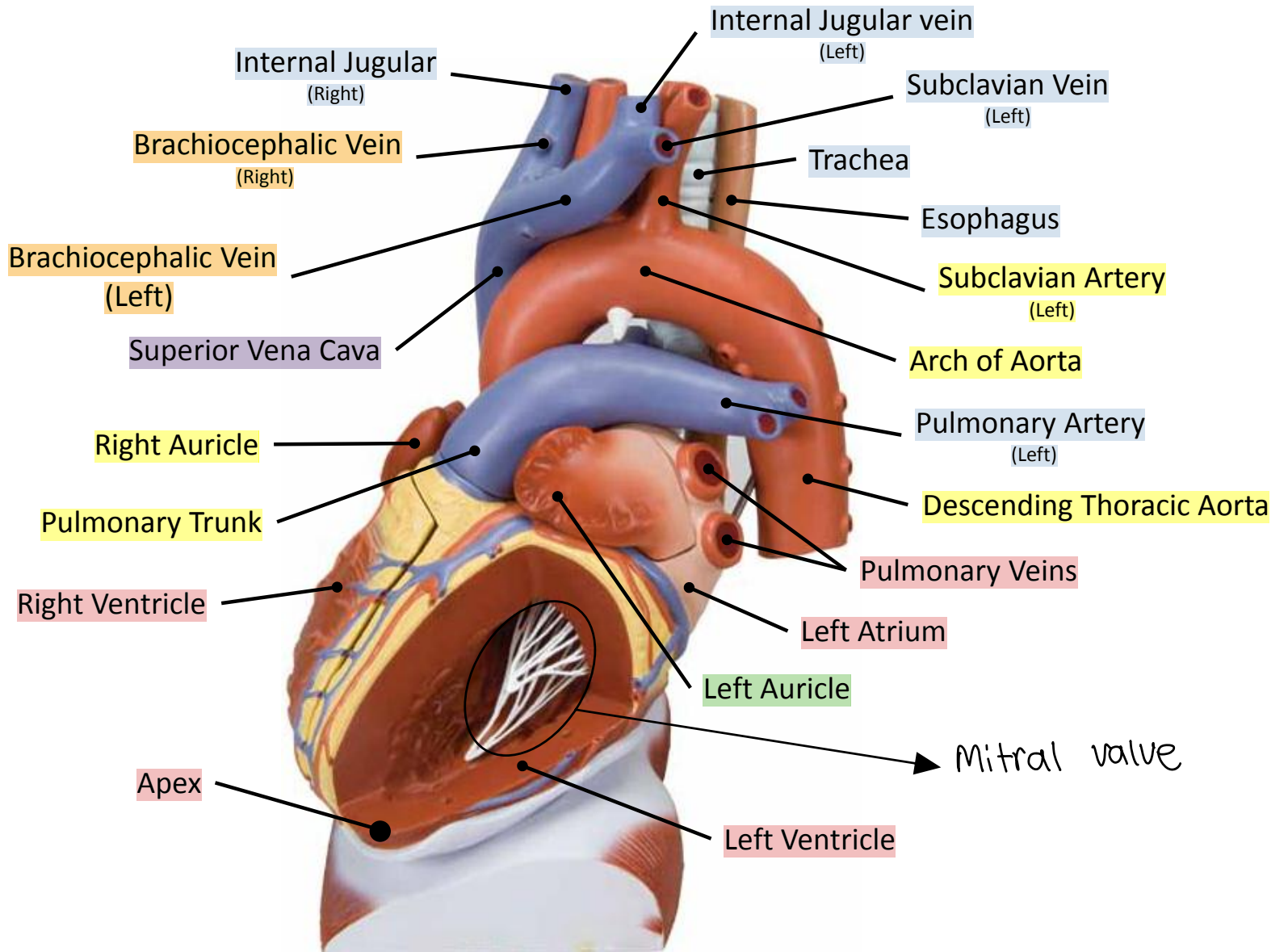
* يمشي فيه
Anterior interventric
artery

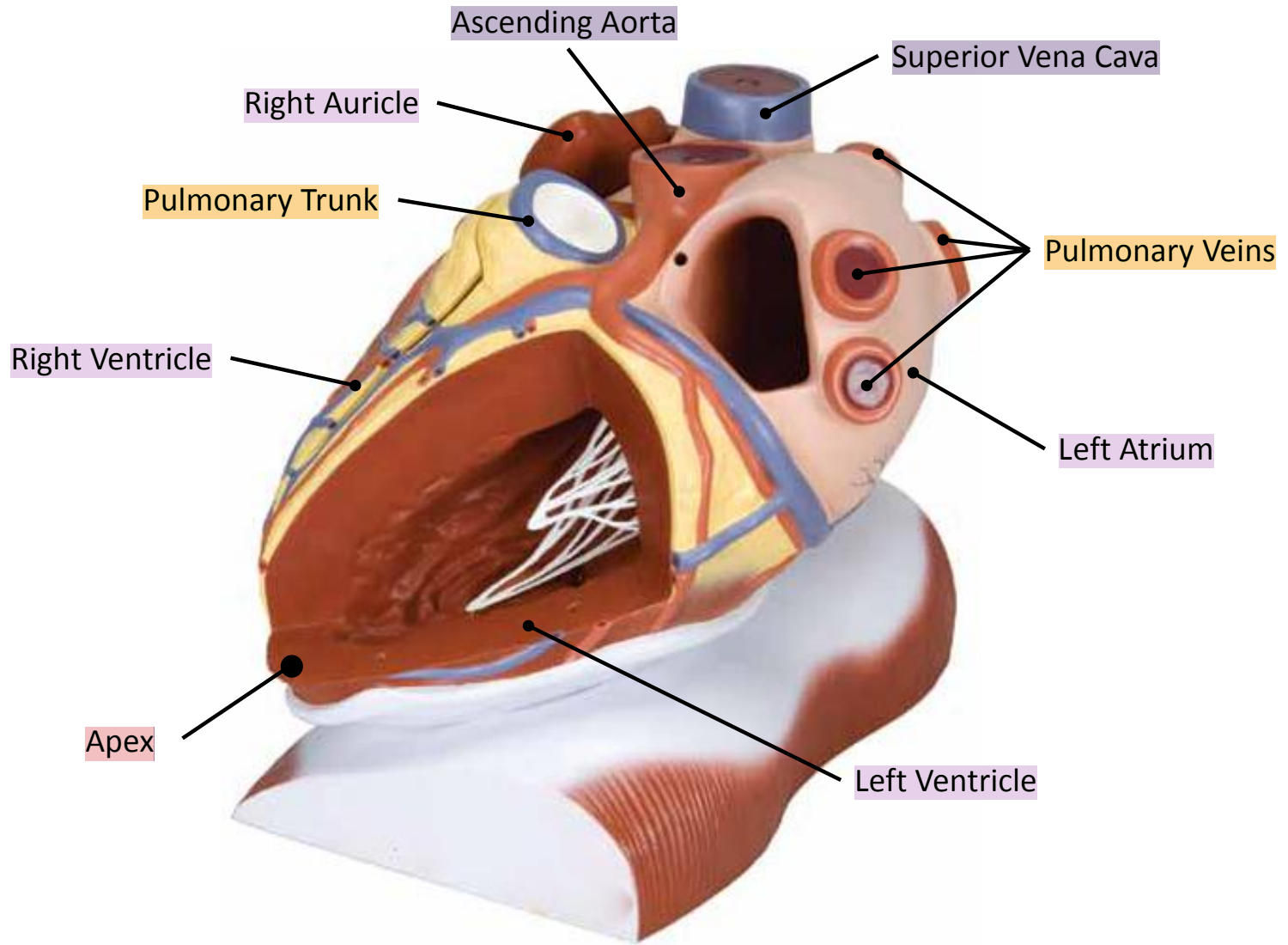
معوله بار
left ventricle
وهي بتخليها نميز ال
left + ventricle عن Right ventricle

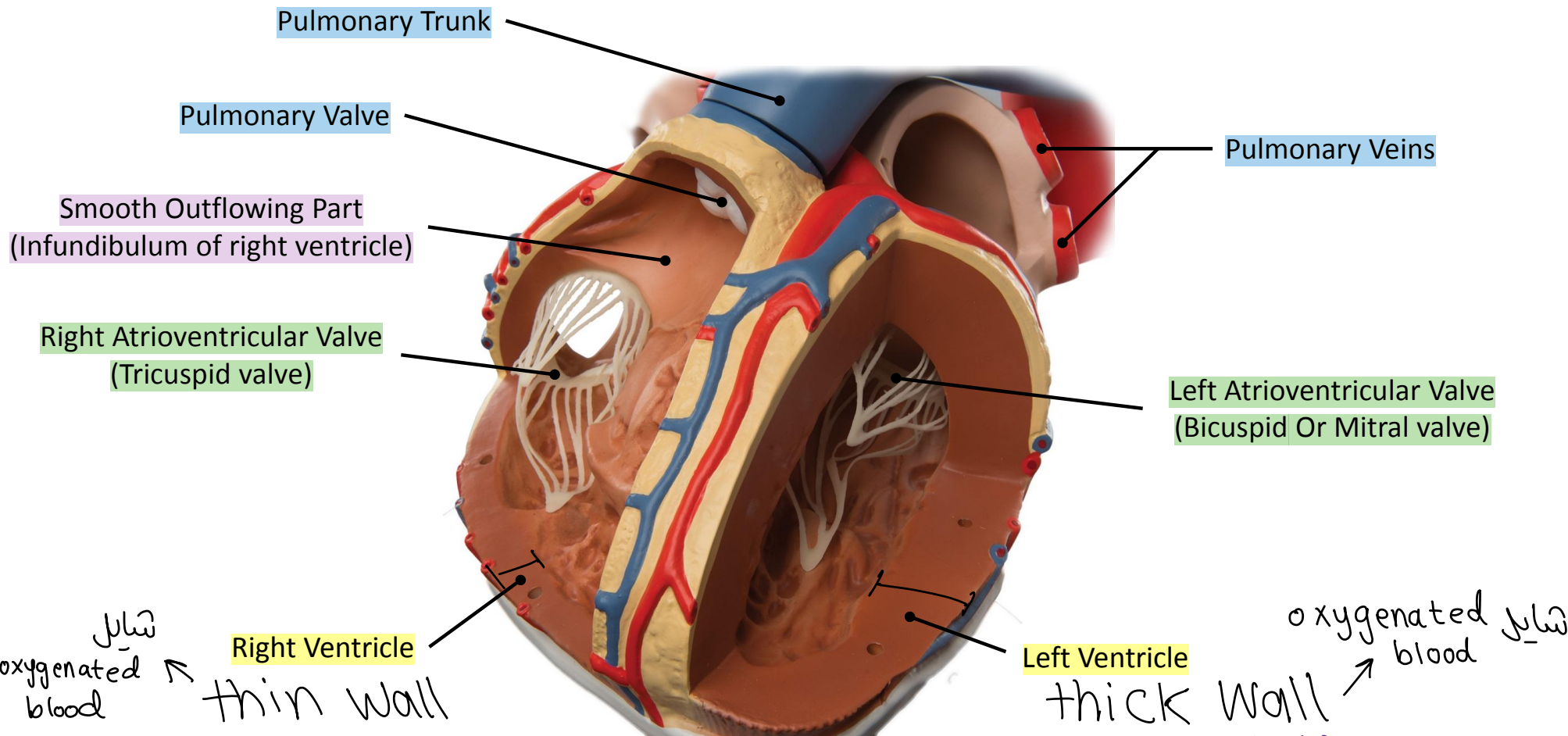


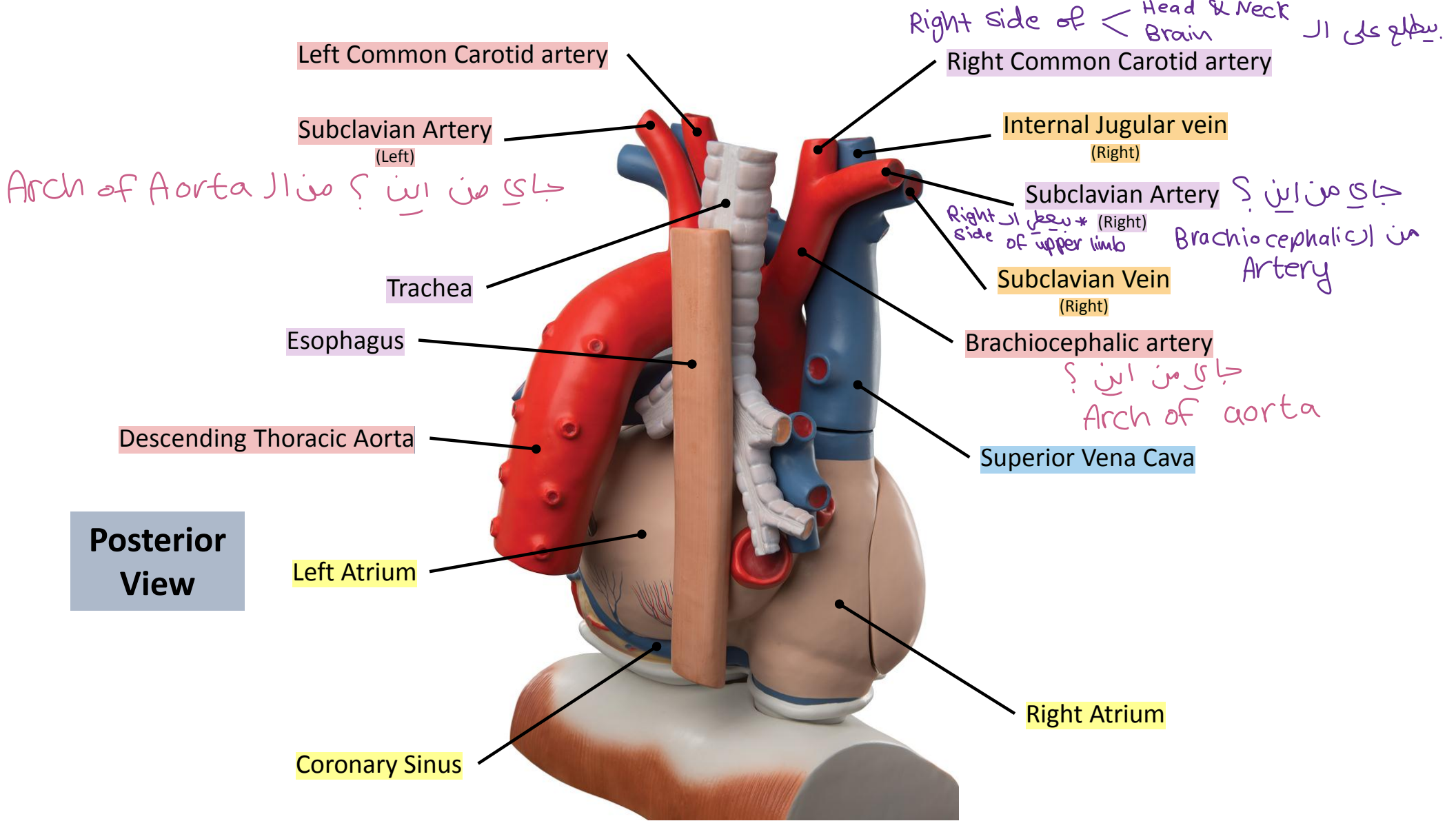












Left Common Carotid artery

Right side of < Head & Neck >
 Brain
 بطن علی ال

Right Common Carotid artery

Subclavian Artery (Left)

Internal Jugular vein (Right)

جای من این؟
 Arch of Aorta

Subclavian Artery (Right)

Right side of upper limb *
 بیطنی ال

جای من این؟
 من Brachiocephalic Artery

Trachea

Subclavian Vein (Right)

Esophagus

Brachiocephalic artery

جای من این؟
 Arch of aorta

Descending Thoracic Aorta

Superior Vena Cava

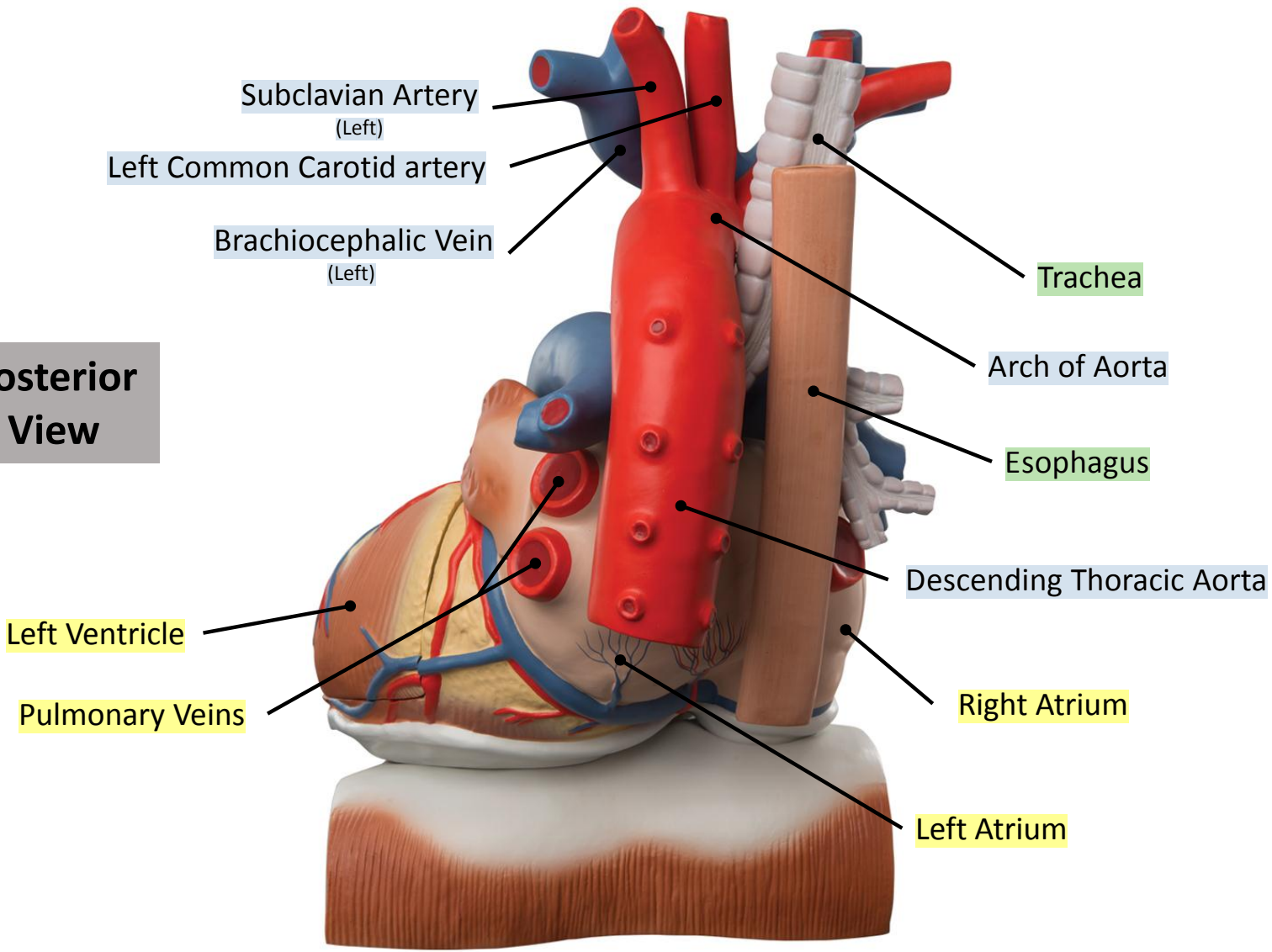
Posterior View

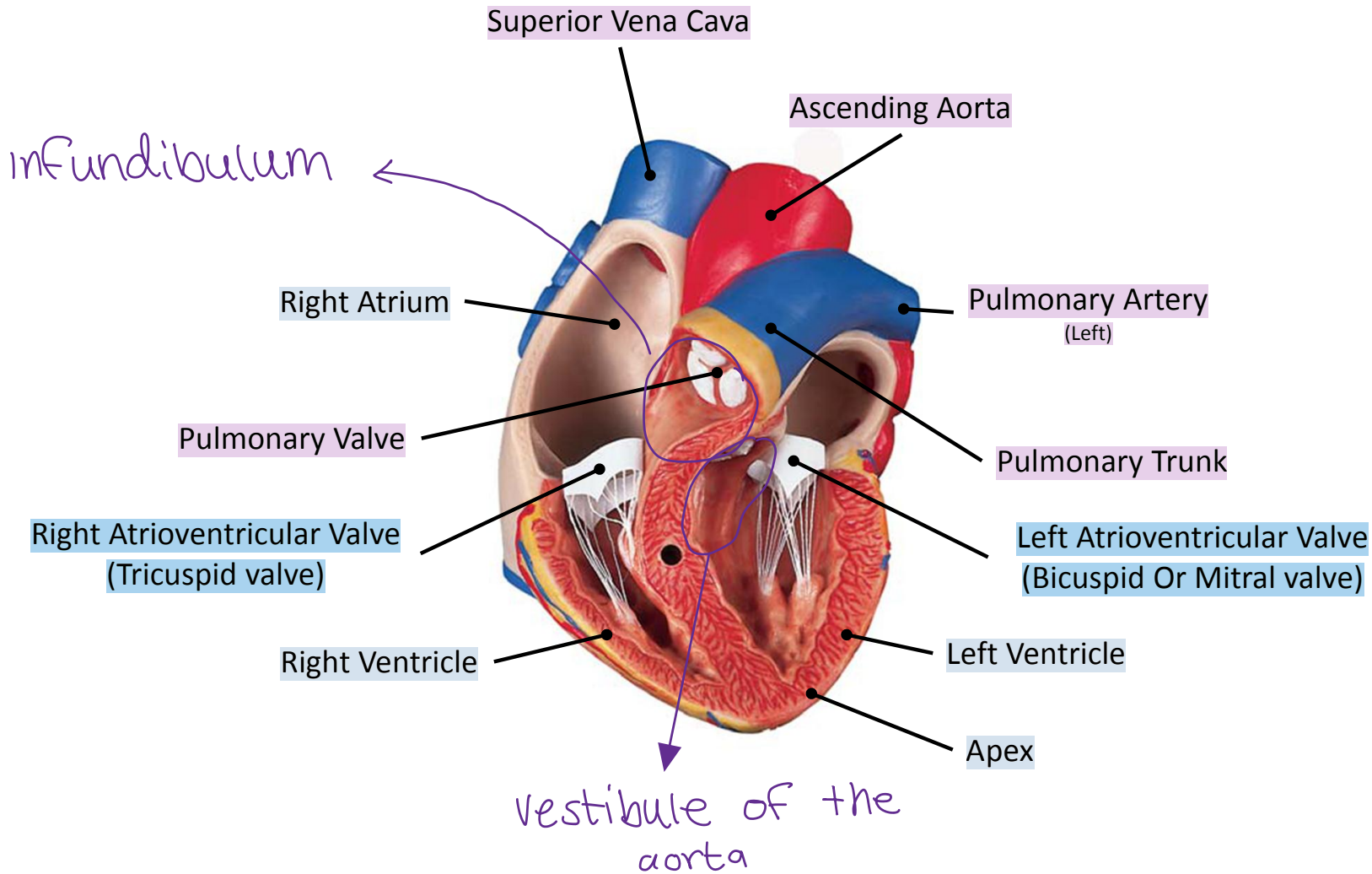
Left Atrium

Right Atrium

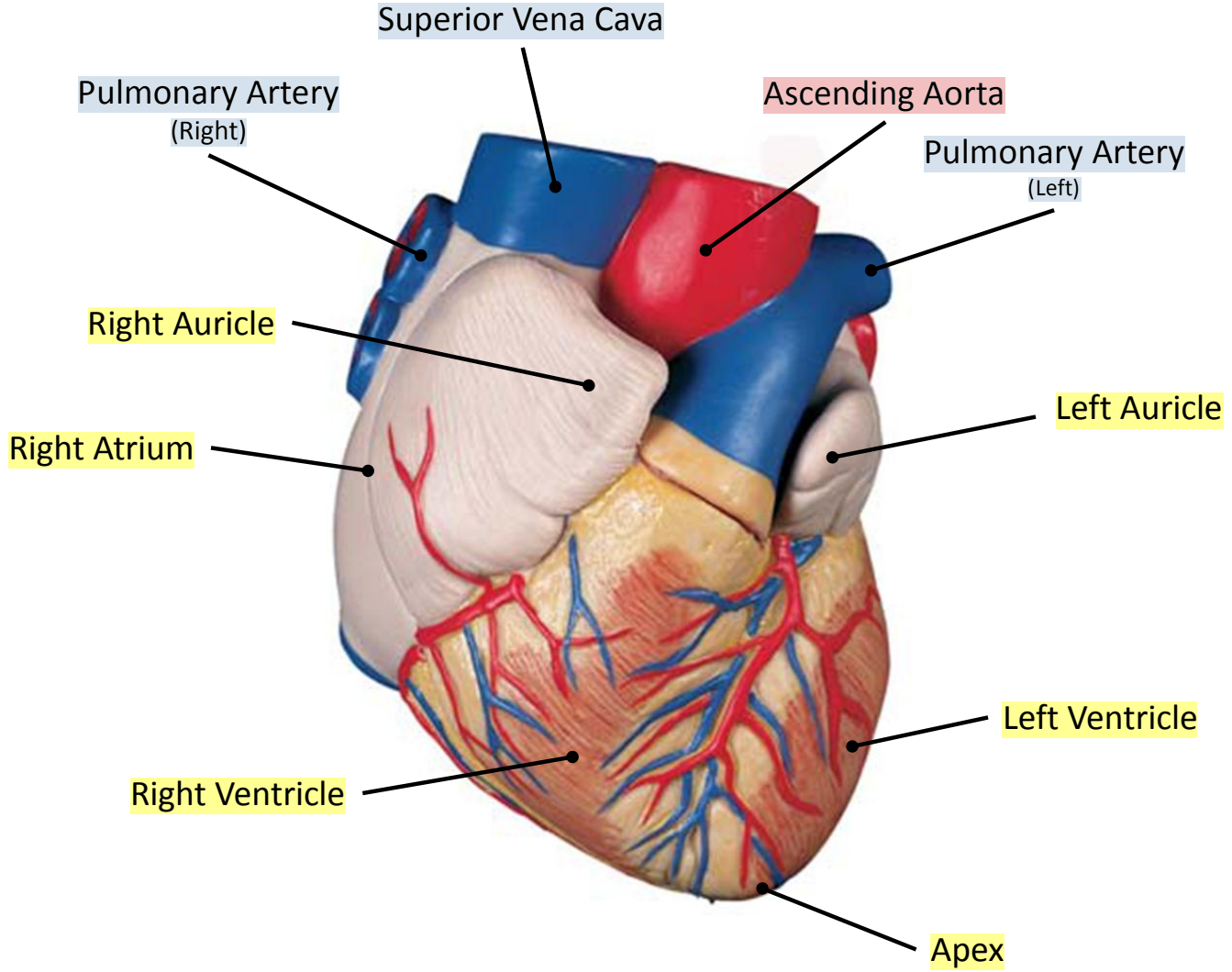
Coronary Sinus

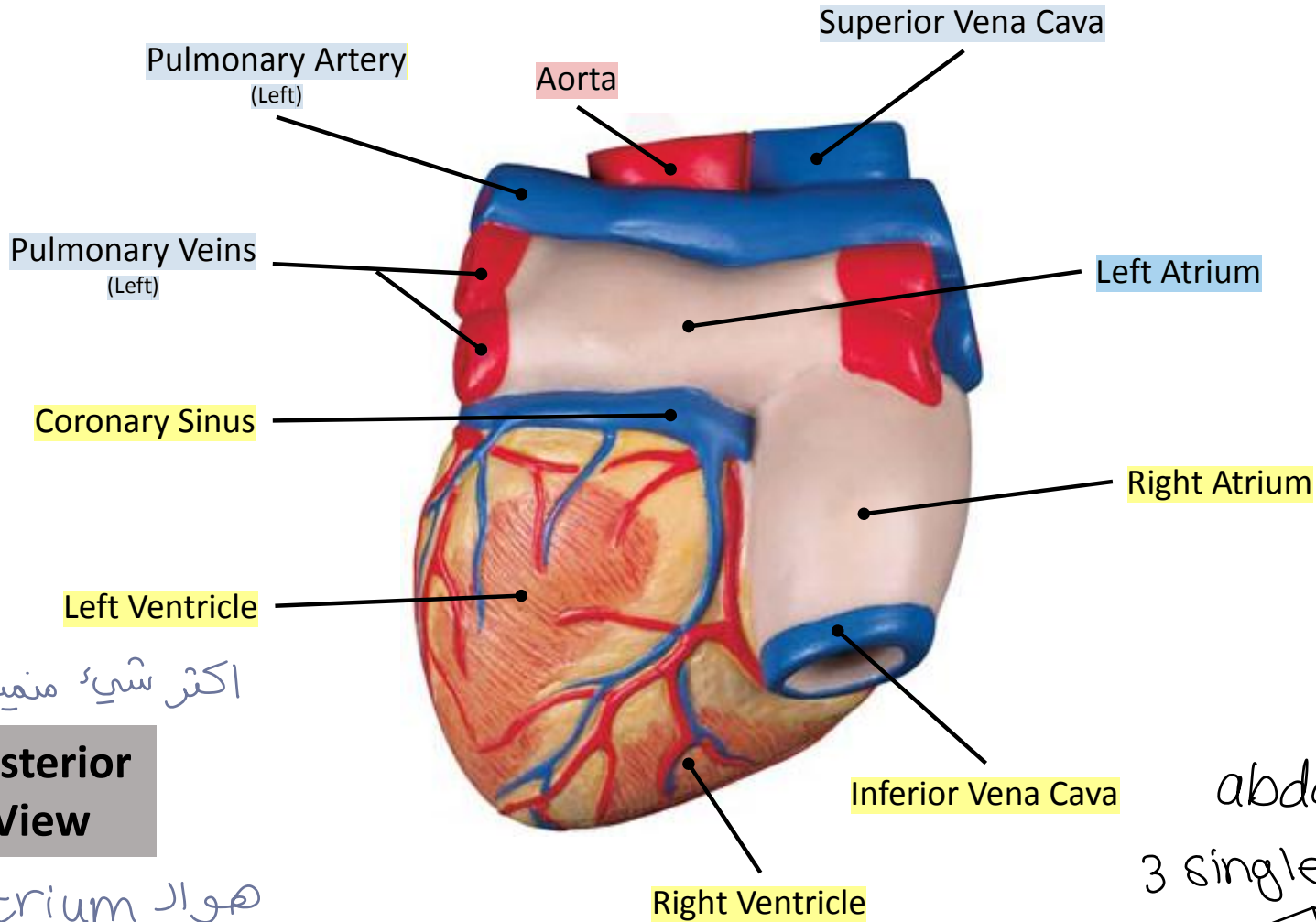
**Posterior
View**





Anterior view





اکثر شئی منہیں فیہ ال

Posterior View

left Atrium هواد
& the 4 pulmonary veins

abdominal aorta ال
3 single branches منہ
 foregut Midgut Hindgut

Superior Mesenteric Artery

↳ L1

Inferior Vena Cava

Inferior Mesenteric Artery

↳ L3

males بل ماسوي
testicular

females
ovarian

Gonadal artery (right)

Common Iliac artery

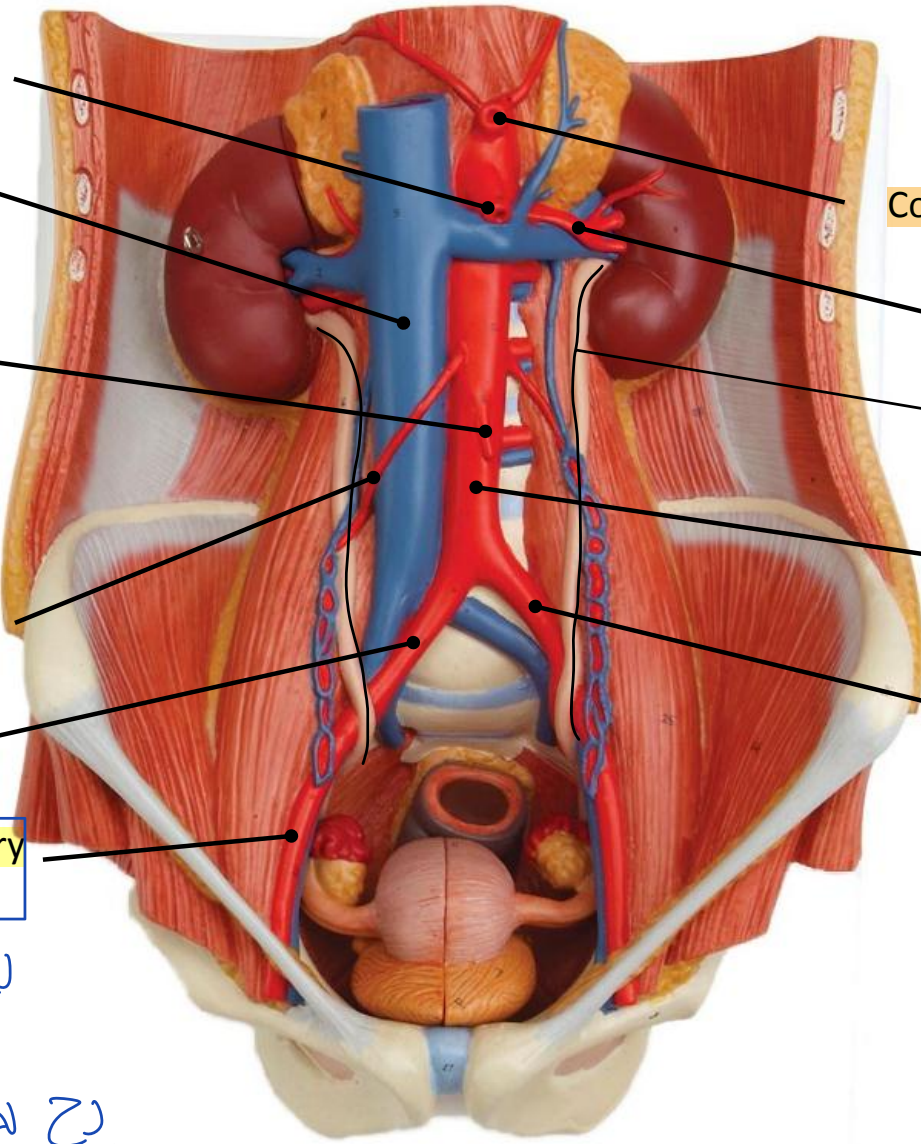
(Right)

External Iliac artery

(Right)

Lower limb لى نزل لى

لى يكل لى



Coeliac trunk

اول تفرغ بطوع

T12

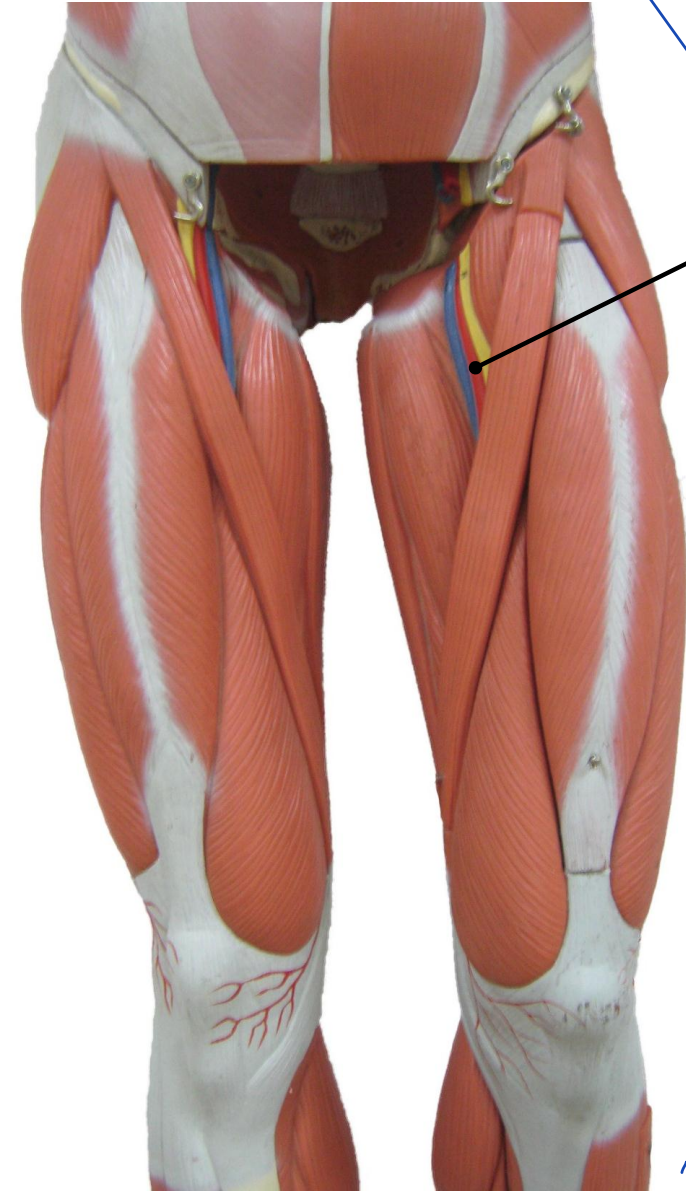
Renal Artery (Left)

↳ Ureter

Descending Abdominal Aorta

Common Iliac artery

(Left)



Femoral Artery

ورج لمسي
ويجي خلف

lower third بال

Thigh ال

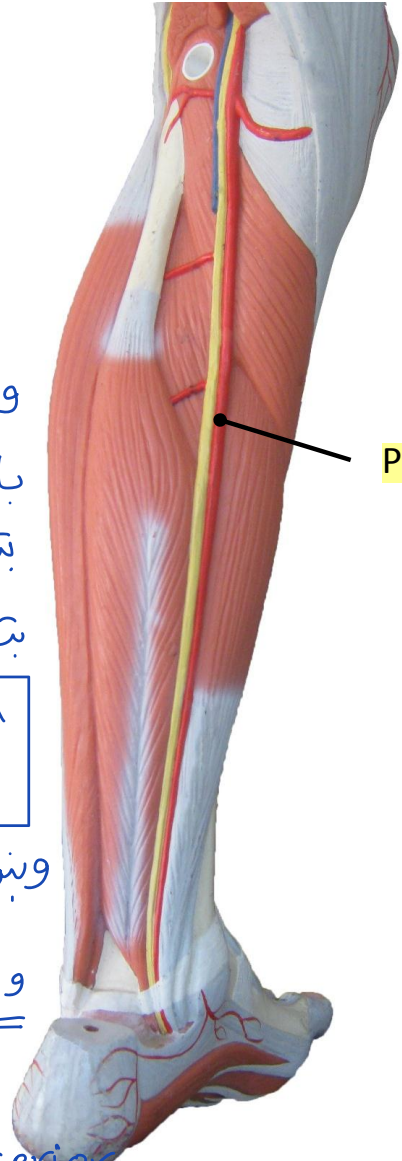
بتحول بصير

popliteal
artery

popliteal وينزل
fossa

و ينقسم

Anterior posterior



Posterior Tibial Artery

Anterior Tibial Artery

