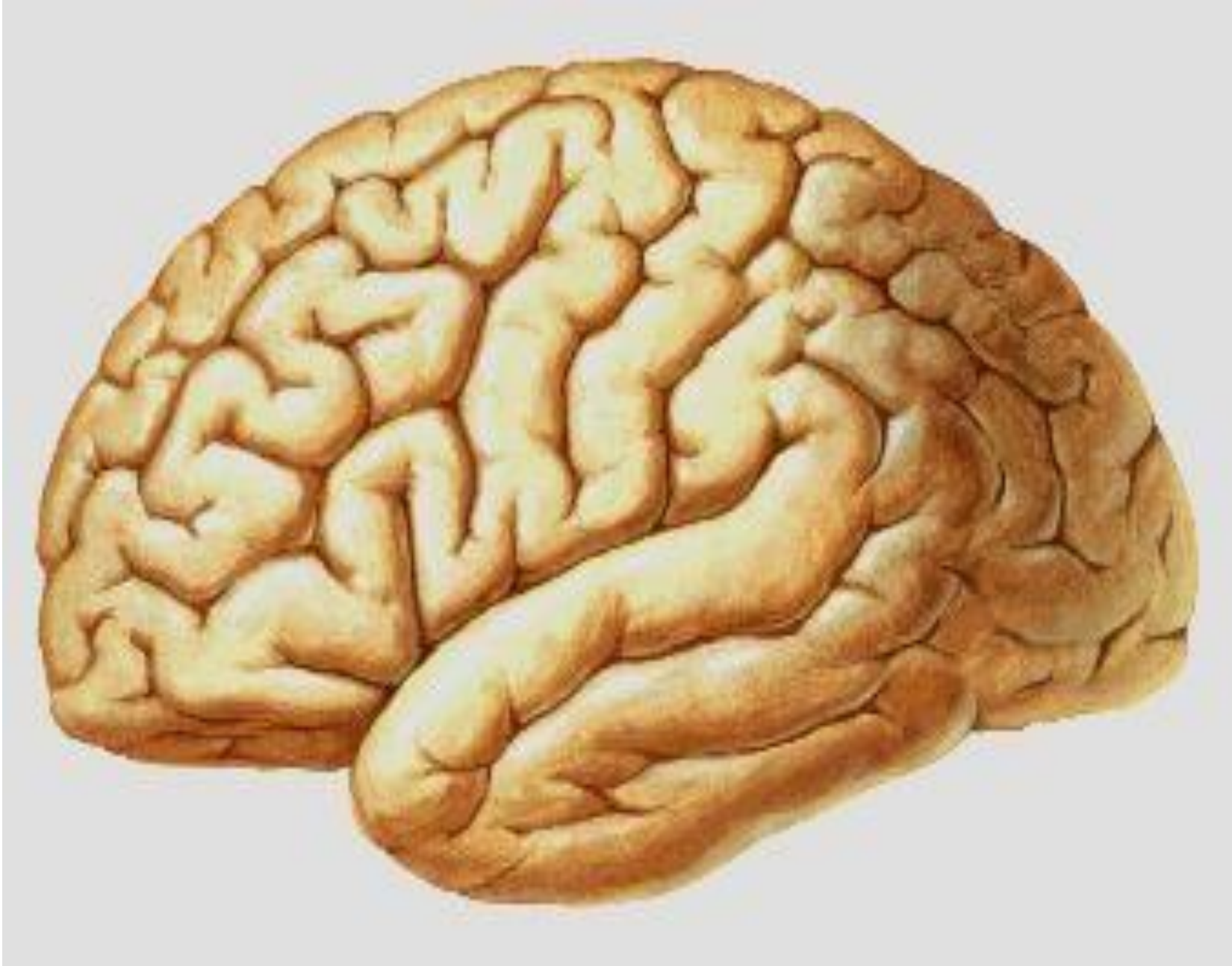


# Lab 10

Nervous system

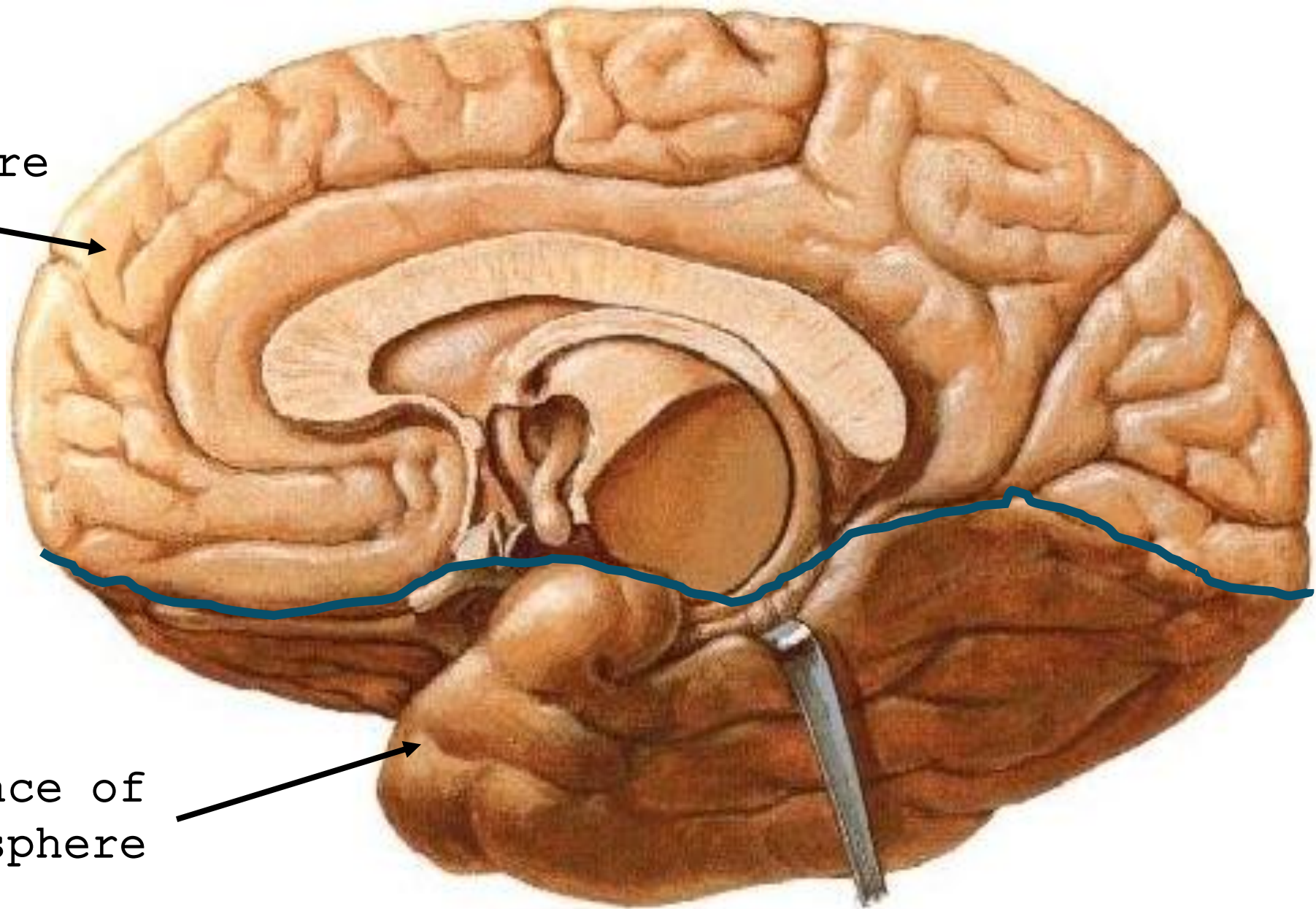
# Superolateral surface of cerebral hemisphere

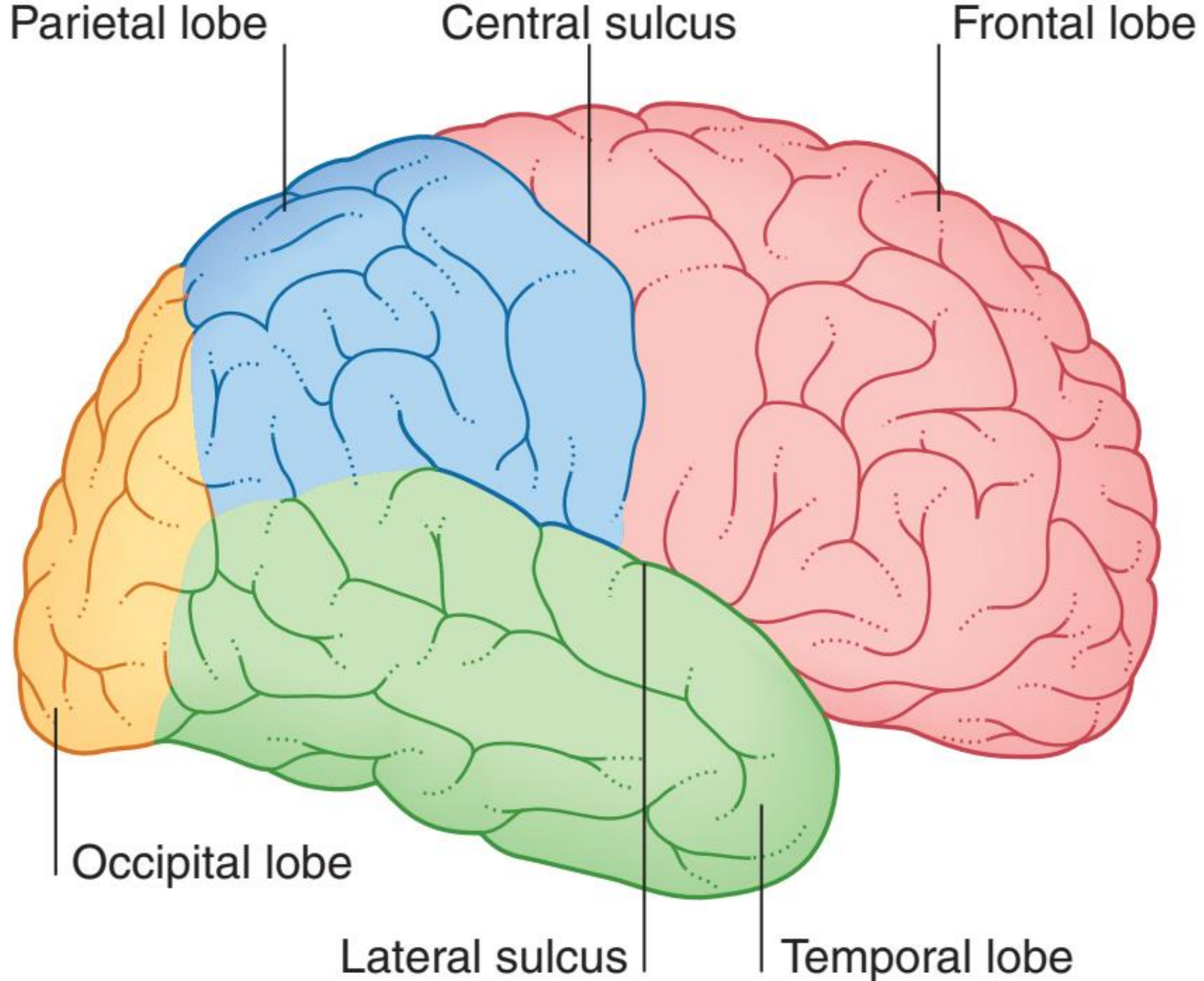


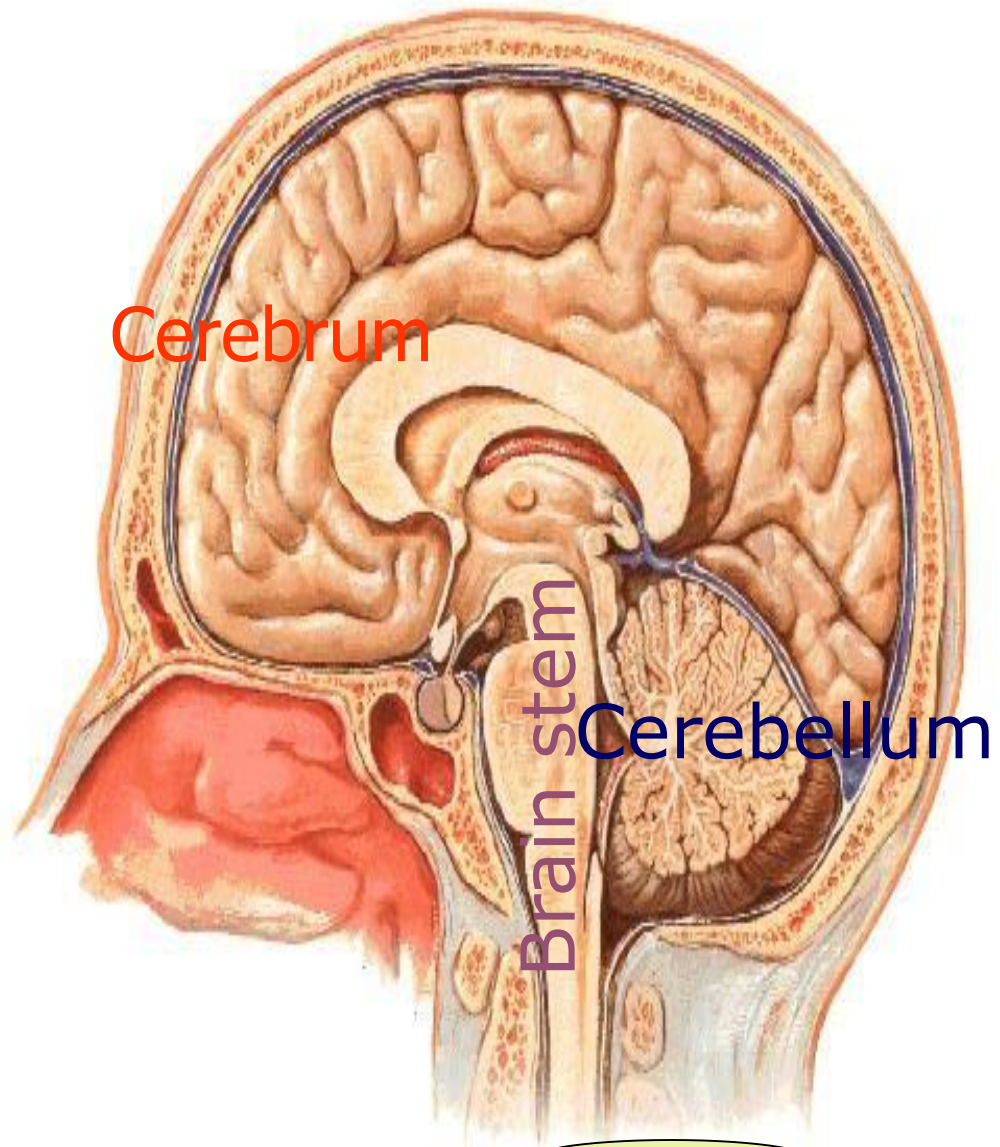
Medial surface of  
cerebral hemisphere



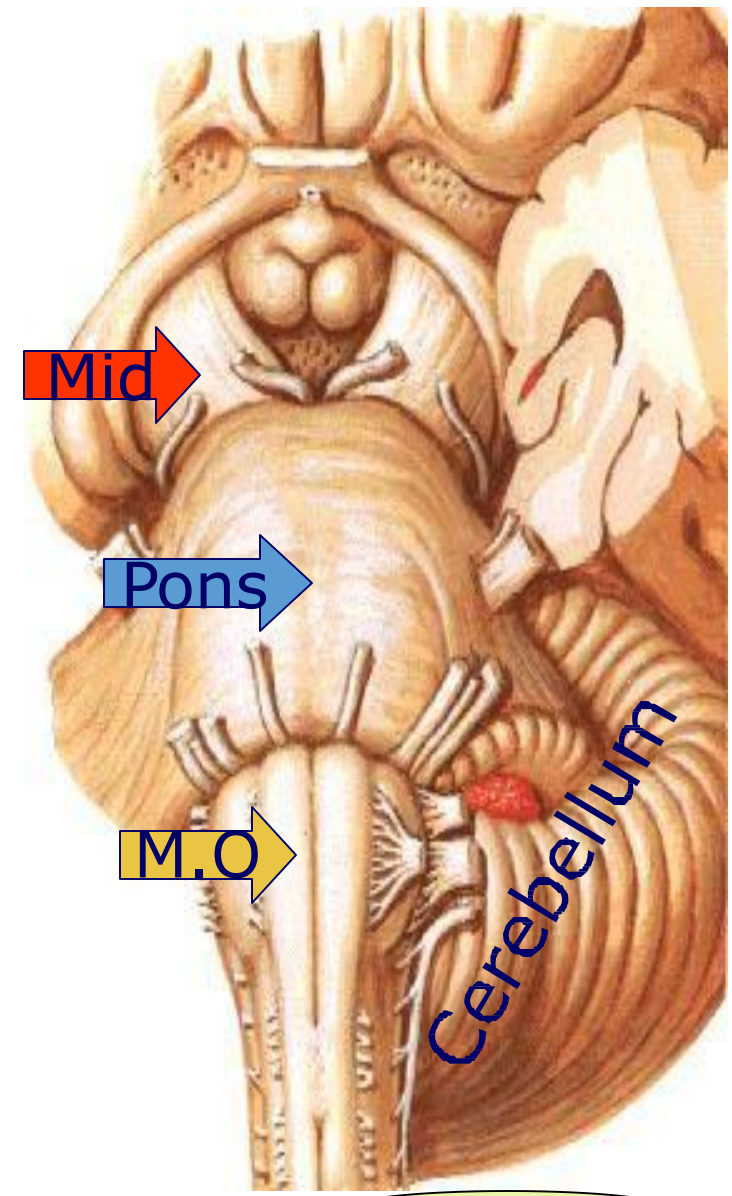
Inferior surface of  
cerebral hemisphere







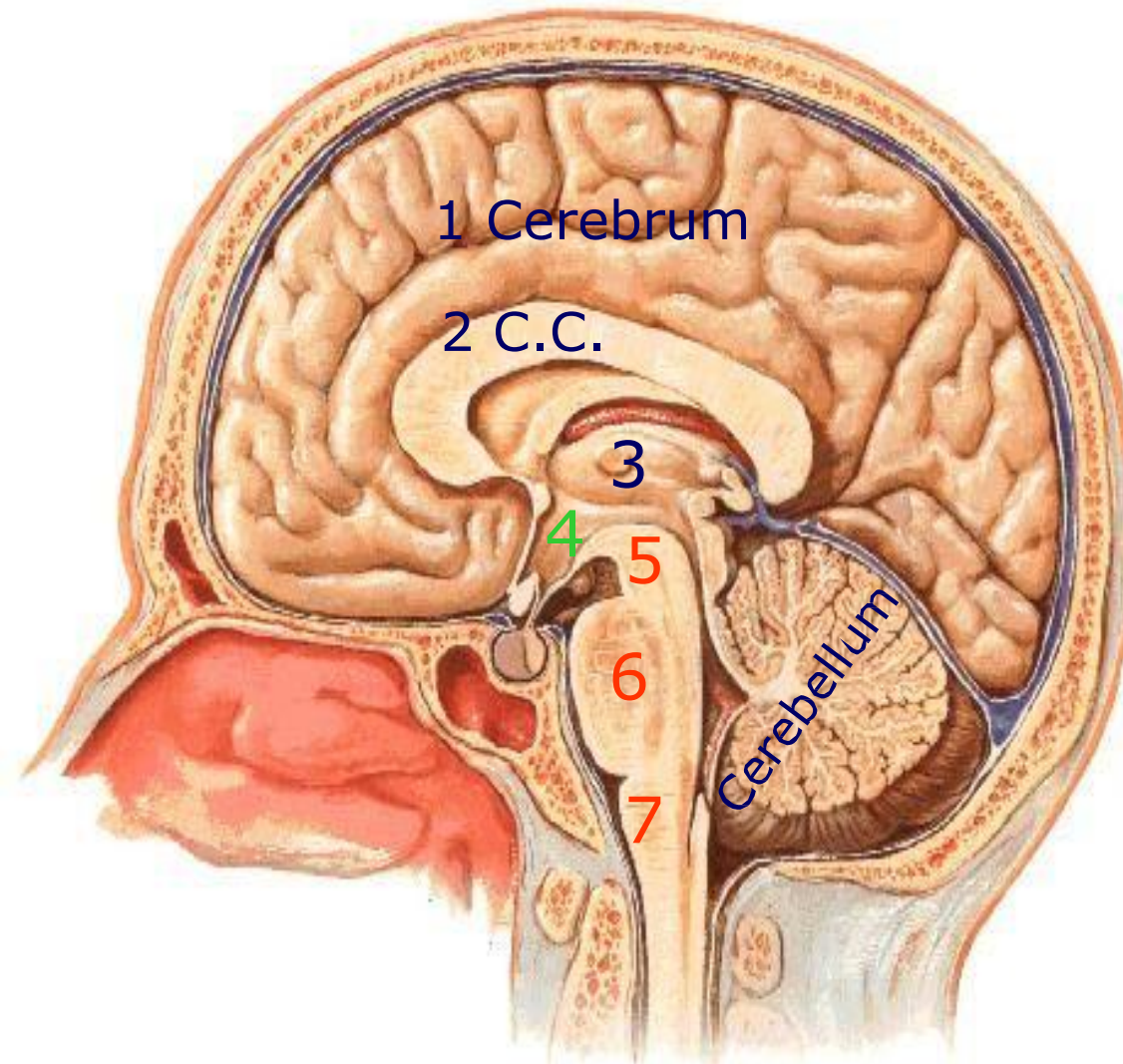
**Parts of the brain**

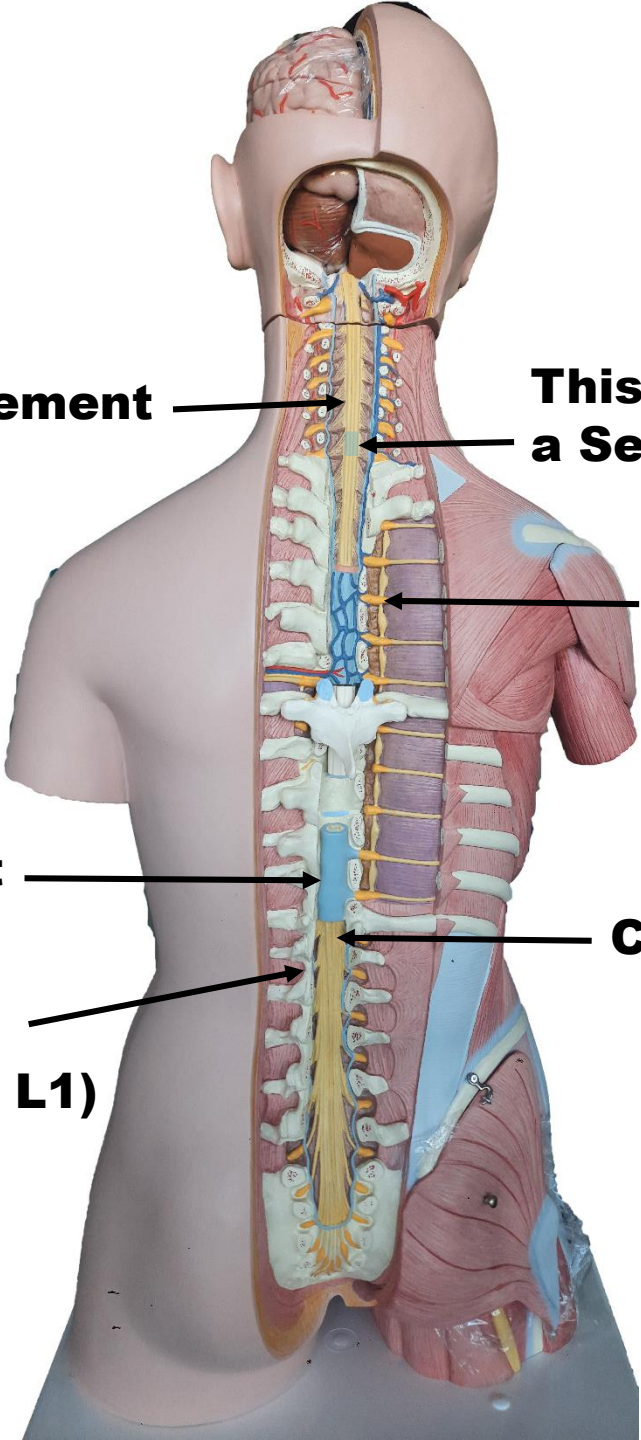


**Parts of the brain stem**

Median sagittal section of the brain: From above downwards the following areas could be identified:

- 1- Medial surface of the cerebrum.
2. Corpus callosum with its 4 parts.
3. Thalamus.
4. Hypothalamus.
5. Mid brain.
6. Pons.
7. Medulla oblongata.
8. Cerebellum.





**Cervical Enlargement**

**This Thickness represents a Segment of Spinal Cord**

**Spinal Nerve**

**Lumbar Enlargement**

**Conus Medullaris**

**Level of termination of the Spinal Cord (Lower border of L1)**



**Intervertebral Foramen (site of exit of Spinal Nerve)**

**Spinal Nerve**