



# HEMATOPOIETIC & LYMPHATIC SYSTEM

-HAYAT BATCH-

SUBJECT : Physiology Lab

LEC NO. : 1

DONE BY : Dana khalaf ❤️

وَقُلْ رَبِّ زِدْنِي عِلْمًا



كلية الطب البشري  
Faculty of Medicine

# Hematopoietic System-2023



## Physiology Lab1-2024

Presented by:

**Dr.Shaimaa Nasr Amin**

**Professor of Medical Physiology**

Dr.Shaimaa N.Amin, HLS, 2024

1

## Important Instructions

1-You must study this lecture and understand what you are going to do in the lab (the lab time is assigned only for rotation on the stations).

2- For anything that is not clear, please Join the office hour of **the next Saturday at 8 PM.**

1-**It is not allowed at all** to change your day, or your session.

3-Please leave the blood group station clean (in the same condition that you will find it when you start the session) and **the used materials (slides, lancets, sticks, cotton ) must be placed in the provided yellow safety box.**

Dr.Shaimaa N.Amin, HLS, 2024

2

- Safety Box



بنحط فيه  
مخلفات اللاب

Dr.Shaimaa N.Amin, HLS, 2024

3

## Physiology Lab 1

# في عنا تجارب راجتيفت باللاب وحدة بس

Dr.Shaimaa N.Amin, HLS, 2024

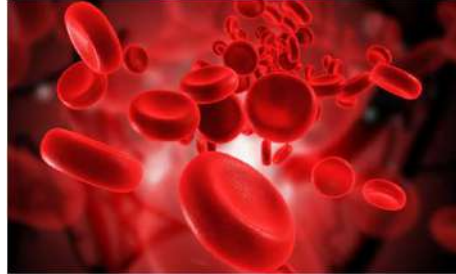
4

في طرق كثيرة بتتكسر فيها RBCs زي الـ toxins  
snake venom, incompatible transfusion  
لكن بهاد الاختبار انا بدي اقيس قدرة الخلايا الحمراء  
withstand osmotic changes

## هشة Osmotic Fragility Test

• **Fragility** → the  
susceptibility of RBCs to  
being broken down .

تحت تأثير osmotic changes



• **Hemolysis** → breaking  
down of RBCs and release  
of Hb into the surrounding  
fluid.

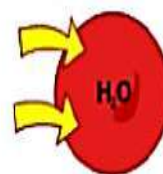
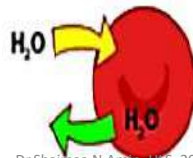
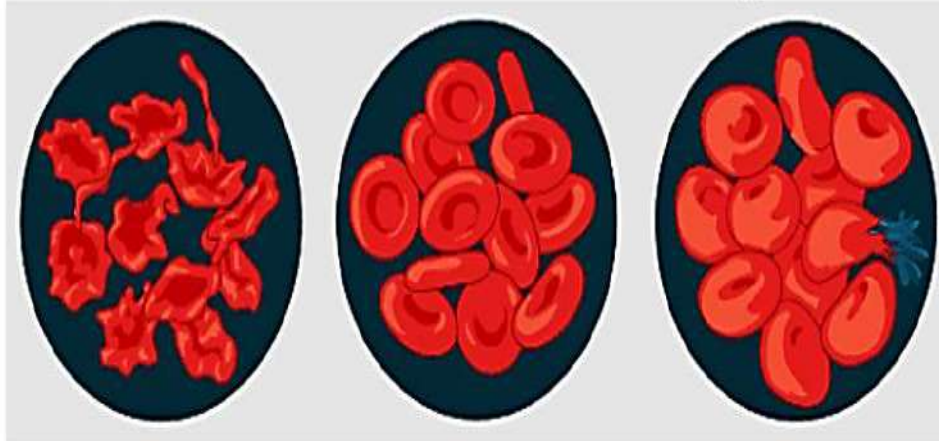
Dr.Shaimaa N.Amin, HLS, 2024

5

$0.9\% <$  Hypertonic

Isotonic =  $0.9\%$

Hypotonic  $< 0.9\%$



Dr.Shaimaa N.Amin, HLS, 2024

6

# isotonic حجم الخلايا ما رح يتغير؛ لانو ال Tonicity جوا الخلية زي برا  
وب hypertonic ال RBCs رح يصير لها shrinkage  
اما hypotonic وهاي التركيزات اللي بستخدمها بالتجربة لاشوف مدى قدرة  
تحمل RBCs، طبعا كل ما بعدنا عن 0.9 كل ما hypotonicity بتزيد ف  
الموضوع بصير اصعب ع الخلايا، لانو في كمية اكبر من الماء رح تدخل  
RBCs وبعد هيك رح يصير لها rupture by osmosis.

لما احط خلايا طبيعية ب hypotonic solution الخلايا ال old رح تبلش تتكسر عند 0.5 اما من 0.6 0.7 0.8 ما رح تتسكر لانو في space من biconcavity بدھا تفقدها بالاول وعند 0.35 كل العينة رح تكون تكسر (young,old) #الفرق بين 0.7 , 0.9 ، و طبعاً لازم أفحص العينة لاشوف، مو ع مستوى النظر

## OSMOTIC FRAGILITY TEST

الطبيعي في الخلية الحمراء انها تكون biconcave, واحنا حكيئا من فوائد ال biconcavity انو الخلية هاي حتى ب ال venous blood ال Tonicity تبعها جوا بتزيد، مو ال venous blood اللي يكون hypotonic، وجمم الخلايا بزيد لكن ما بتتسكر لانو ال biconcavity أعطتها space بتستغله

### Importance of test:

In certain types of hemolytic anemia, the fragility of red cells is increased so that they burst and release their Hb into the blood. The osmotic fragility test is used as a screening test for this group of anemia.

### Principle:

isotonic

The normal red cell can remain suspended in normal saline (0.9% NaCl solution) for hours without any change in their size or shape, and without rupturing. But when they are placed in decreasing concentrations of hypotonic saline, their ability to resist hemolysis can be determined quantitatively.

When osmotic fragility is normal, red cells begin to hemolyze when suspended in 0.50% saline. 50% lysis occurs in 0.4% saline and lysis is complete in 0.35% saline.

In hereditary spherocytosis, the red cells are spherocytic in normal plasma (0.9%) and hemolyze more readily in hypotonic NaCl solution. Thus, this test is commonly used to diagnose hereditary spherocytosis, which is one of the most common causes of hereditary hemolytic anemia.

عند 0.7 بتبش  
تتكسر

Dr.Shaimaa N.Amin, HLS, 2024

- 7 مصدر ال biconcavity وجود cytoskeletal proteins أهمهم ankyrin & spectrin ... ف لو في مشكلة فيهم الخلية رح تصير spherical وتعمل أنيميا spherocytosis، وبهاي الحالة قدرة هالخلايا to withstand hypotonicity اقل من الخلايا الطبيعية انا ك شخص طبيعى واخذت عينة دم مني، هل كل الخلايا رح تكون الها نفس الكفاءة بتحمل ال hypotonicity ؟ لا طبعاً، لانو مو كل الخلايا بنفس المرحلة من life cycle ✓ ف كل ما الخلية كبرت ال cell membrane more rigid

## Materials:

- Wood or metal rack with 8 clean, dry, glass test tubes
- 10 ml measuring pipette
- distilled H<sub>2</sub>O
- NaCl solution in distilled H<sub>2</sub>O of the following concentration:  
0.25, 0.30, 0.35, 0.40, 0.45, 0.50, and 0.55. ببلش من 0.9



rack

Dr.Shaimaa N.Amin, HLS, 2024

**Method:**

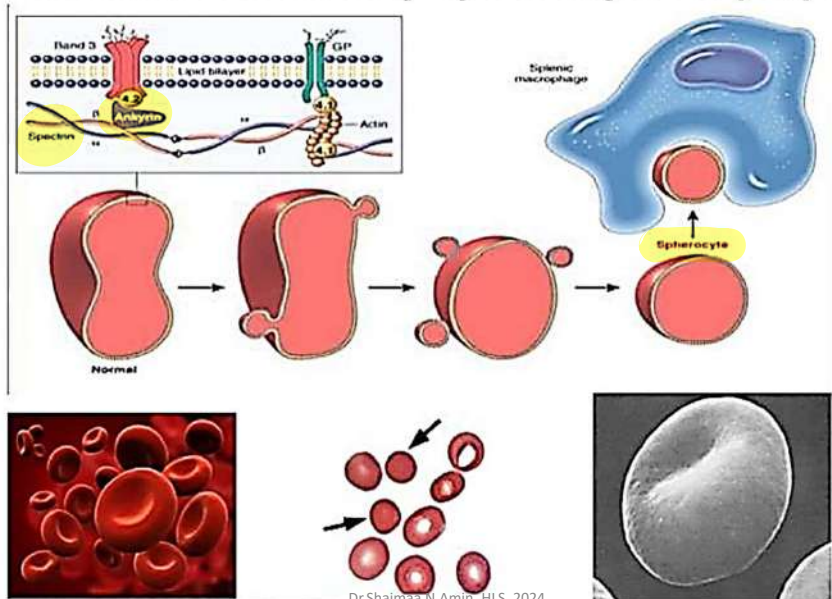
- 1- Number the test tubes from 1-8 and put them in the rack.
- 2- Using the measuring pipette, place 5ml of the above NaCl solutions in the 1<sup>st</sup> 7 test tubes in serial order.
- 3- Place 5 ml distilled H<sub>2</sub>O in the 8<sup>th</sup> tube.
- 4- Add 1ml of fresh blood to each test tube.
- 5- Invert gently each test tube to mix the blood and saline (or water).  
(Don't shake the tubes).
- 6- Allow the tubes to stand for 30 minutes. Then observe the extent of hemolysis in each tube by holding the rack at eye level, with a white paper sheet held behind it.

**Observation and Results:**

- 1- If there is no hemolysis, the red cells will settle down, leaving the saline above clear.
- 2- If there is some hemolysis, the saline will be tinged red with Hb, with the unruptured cells at the bottom.
- 3- The color of the saline will be increasingly deeper with decreasing tonicity, i.e., with increasing hemolysis.
- 4- No hemolysis occurs if the tube contains normal saline, and complete hemolysis occurs in distilled water.

Dr.Shaimaa N.Amin, HLS, 2024

9

**What Is Hereditary Spherocytosis (HS)?**

Dr.Shaimaa N.Amin, HLS, 2024

10

بكل أنبوية بحط نقطة من الدم

### When hemolysis starts and completes?



Dr.Shaimaa N.Amin, HLS, 2024

11

### Reading

# هاي الصورة موكيتر دقيقة .

0.9%

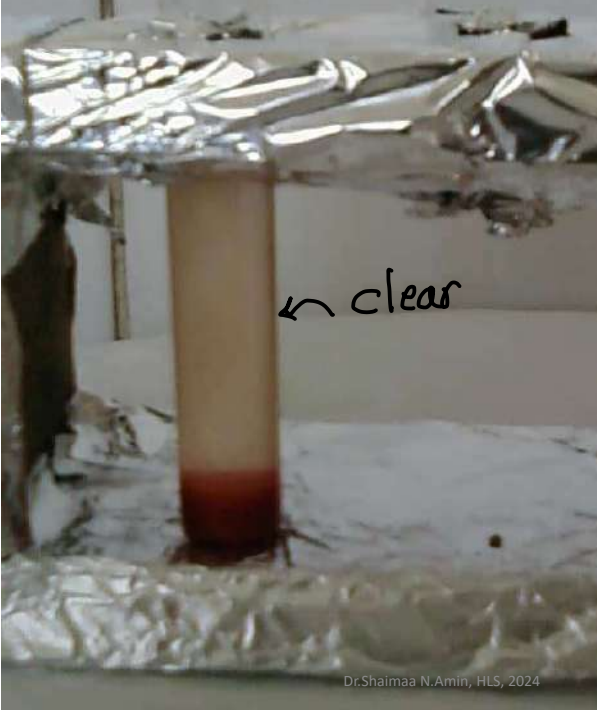


No hemolysis

Dr.Shaimaa N.Amin, HLS, 2024

12

## # الشخض الطبيعي




0.7%

• 0.7 ما فرقت عن 0.9  
بالعين المجردة لكن لو فحصت  
الخلايا رح لاحظ انو حجم  
الخلايا:  
normal: 0.9  
swelling: 0.7

No  
hemolysis

Dr.Shaimaa N.Amin, HLS, 2024

13



# بداية التكتيس في  
الشخض الطبيعي

0.5%

Partial  
hemolysis

• بتكتس old cells

Dr.Shaimaa N.Amin, HLS, 2024

14





0.3%

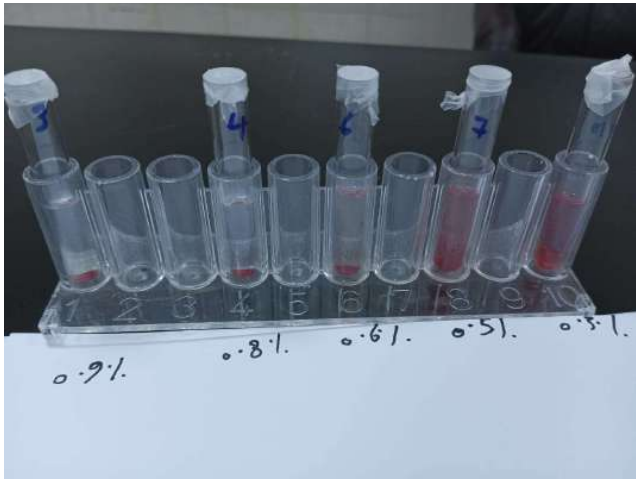
Complete hemolysis

• ما في ولا خلية سليمة

Dr.Shaimaa N.Amin, HLS, 2024

15

# Normal



Dr.Shaimaa N.Amin, HLS, 2024

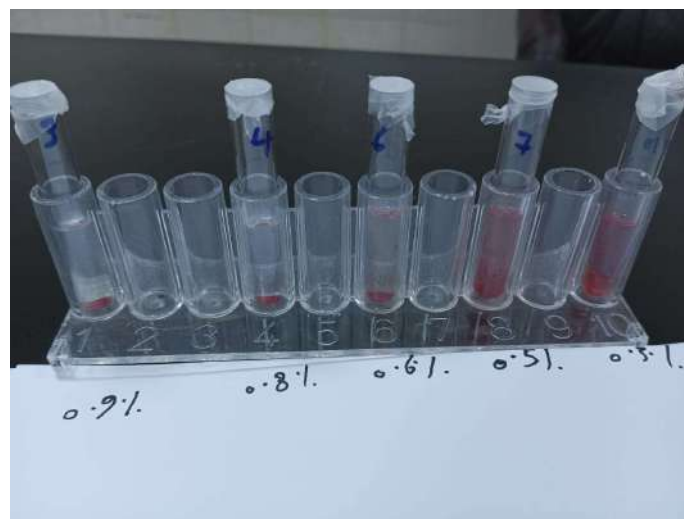
16

- Normally there is a <sup>\*</sup> range of hemolysis (from start till it is complete): because of the <sup>1</sup> biconcave shape of RBCs. In addition to the fact that <sup>2</sup> not all RBCs are at the same age (hemolysis of old RBCs starts before young RBCs).

Dr.Shaimaa N.Amin, HLS, 2024

17

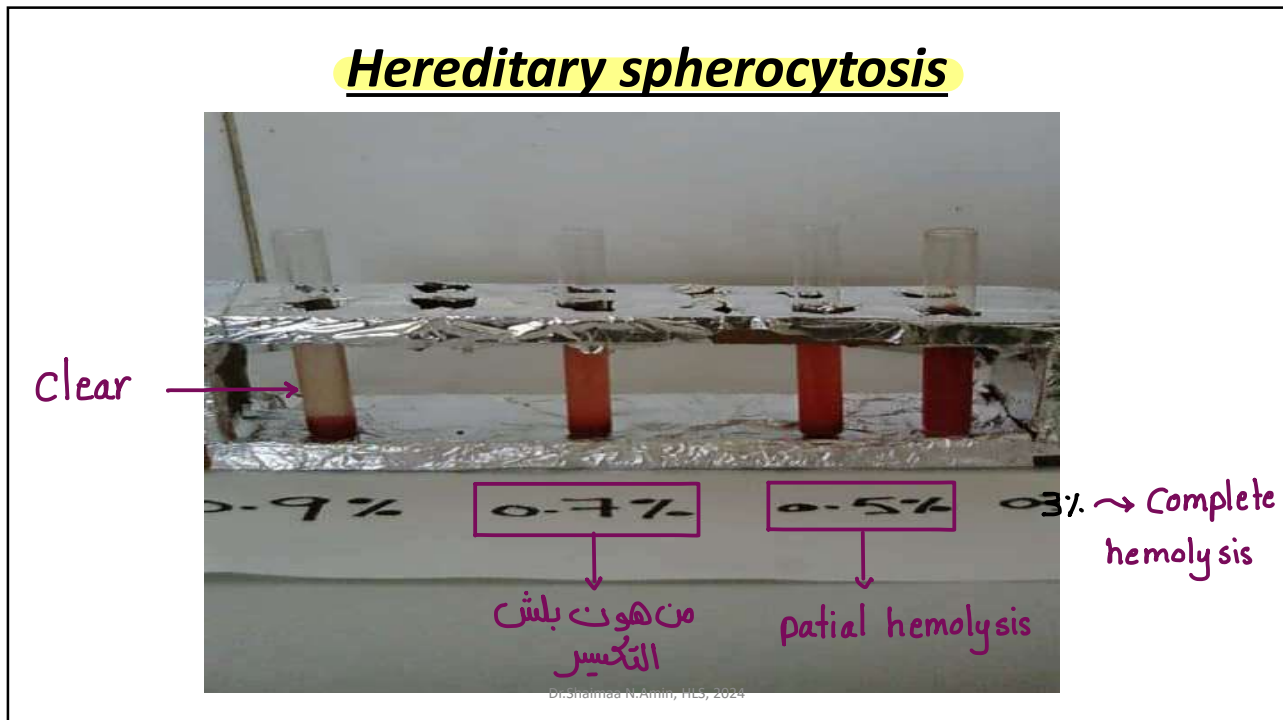
## Normal



Dr.Shaimaa N.Amin, HLS, 2024

18

مطلوب منا هون نتعرف ع بداية ال hemolysis ,  
partial hemolysis, complete hemolysis



19

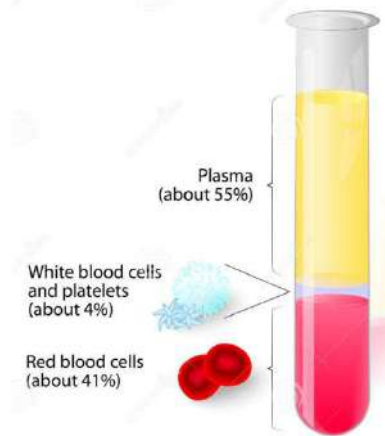
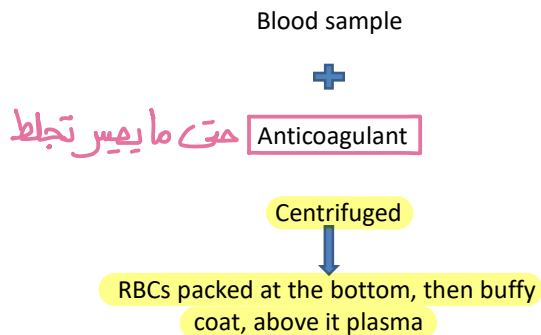
## Osmotic Fragility station

- The station for this experiment contains:  
A rack of test tubes containing NaCl solution with different concentrations. Hypotonic + isotonic بحط
  - What will you do at the station?
  - Without moving the rack or the tubes check if there is hemolysis or no hemolysis and if there is hemolysis check if it is [partial or complete hemolysis] (by observing the colour of the solution and the presence or absence of RBCs in the bottom of the tube).
- Dr.Shaimaa N.Amin, HLS, 2024

20 بهاي التجربة بدنا نفحص السائل اذا clear ولا لا وكمان الخلايا موجودة ولا لا

### Packed cell volume (Hematocrit value)

- It's the ratio of red blood cells volume to the whole blood volume.
- According to the specific gravity of blood elements



Dr.Shaimaa N.Amin, HLS, 2024

21

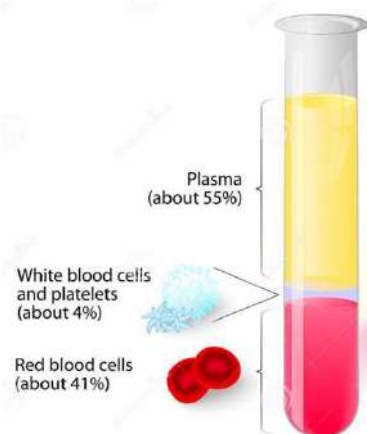
### Packed cell volume (Hematocrit value)

من عينة الدم كم في RBCs مقدسة فقط

$$\text{Hematocrit (Hct)} = \frac{\text{Height of packed red cells (mm)}}{\text{Height of packed RBCs and plasma (i.e., height of blood column)}} \times 100$$

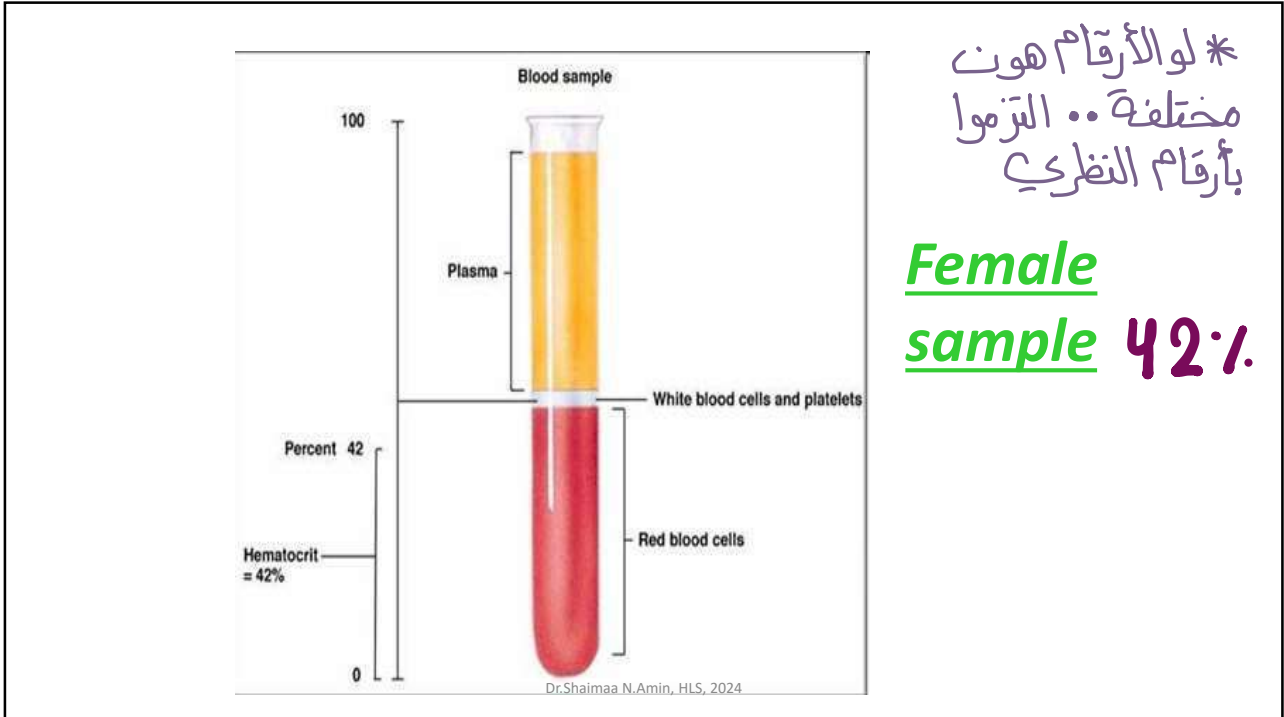
For example, if the height of packed red cells is 45 mm, then

$$= \frac{45}{100} \times 100 = 45 \text{ percent.}$$



Dr.Shaimaa N.Amin, HLS, 2024

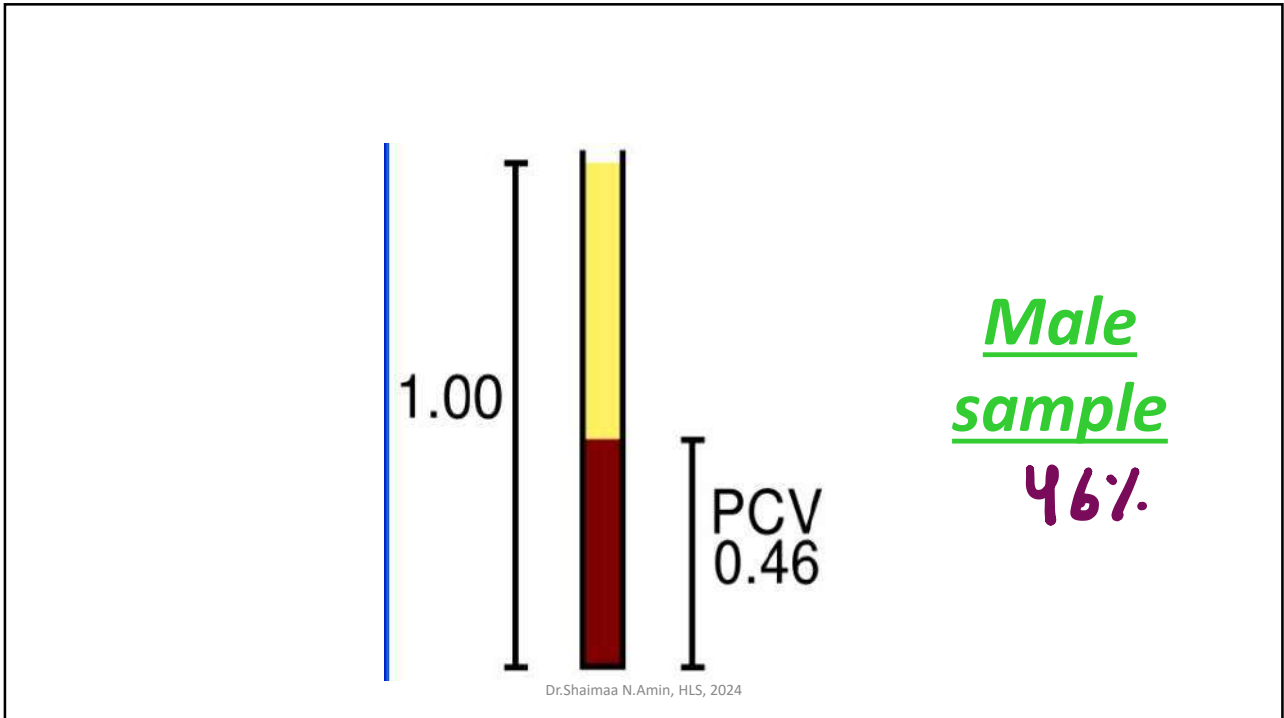
22



\* لو الأرقام هون  
مختلفة .. الترموا  
بأرقام النظرية

Female  
sample 42%

23



Male  
sample  
46%

24

## Determination of Packed Cell Volume (PCV) (Hematocrit Ratio)

### Definition

It is the ratio of the RBCs volume to the total blood volume.

### Principle:

A sample of blood to which an anticoagulant has been added is centrifuged in a capillary tube. The specific gravity of RBCs is about 1090 and that of plasma is about 1030. Being heavier than plasma, the RBCs get backed towards the bottom of the tube by the centrifugal force and the plasma stays above the RBCs. White cells which have specific gravity intermediate between RBCs and plasma; form a thin layer (buffy coat) above RBCs.

Dr.Shaimaa N.Amin, HLS, 2024

25

## The experiment



Dr.Shaimaa N.Amin, HLS, 2024

26

**Procedure:**

- 1- Sterile the finger with alcohol and leave it to dry.
- 2- Prick the fingertip using sterile lancet and allow a large drop of blood to collect.
- 3- Place the end of the heparinized capillary tube in the drop of blood. Hold the tube in a horizontal position and allow the blood to enter (the blood enters by capillary attraction) until the tube is one-half to three-fourths full.
- 4- Seal one end of the tube by wax.
- 5- Place the capillary tube the microhematocrit centrifuge with the sealed end to the outside and centrifuge for 5 minutes. The blood column is separated into plasma above and packed RBCs in the bottom of the tube.
- 6- After centrifugation, remove the capillary tubes, hematocrit ratio is read with the help of the reading scale.
- 7- Put the capillary tube on the reading scale, then move the tube on the chart horizontally with the lower end of the packed RBCs on the "O" line and the upper end of the clear plasma intersects the oblique line "100" position.
- 8- From the upper end of the packed RBCs, hematocrit value is read on the scale on the right side.

Dr.Shaimaa N.Amin, HLS, 2024

27

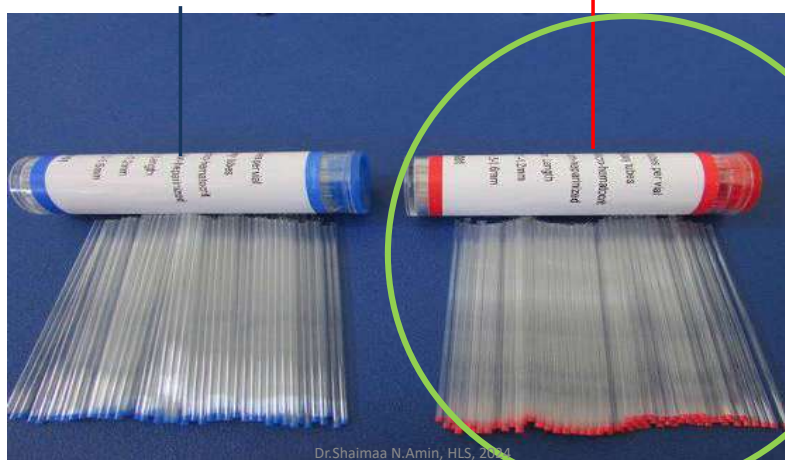
صعب اني اخذ عينة ١٠٠ مل من الشخص لانورح اقل ال volume عنده ، لهيك بستخدم capillary tubes

## Capillary tubes

\* Lab 2 \*

• Non heparinized

Heparinized



Dr.Shaimaa N.Amin, HLS, 2024

28



• بنعم بحول طبعا  
و بنسني ينشف  
• في الأقل ببيع نفس  
الأنبوبة

Dr.Shaimaa N.Amin, HLS, 2024

29

الأنبوبة هاي مو مدرجة بالارقام ومفتوحة من الناحيتين ، لهيك بغلفها ب واكس عشان  
اعملها sealing



Dr.Shaimaa N.Amin, HLS, 2024

30





31

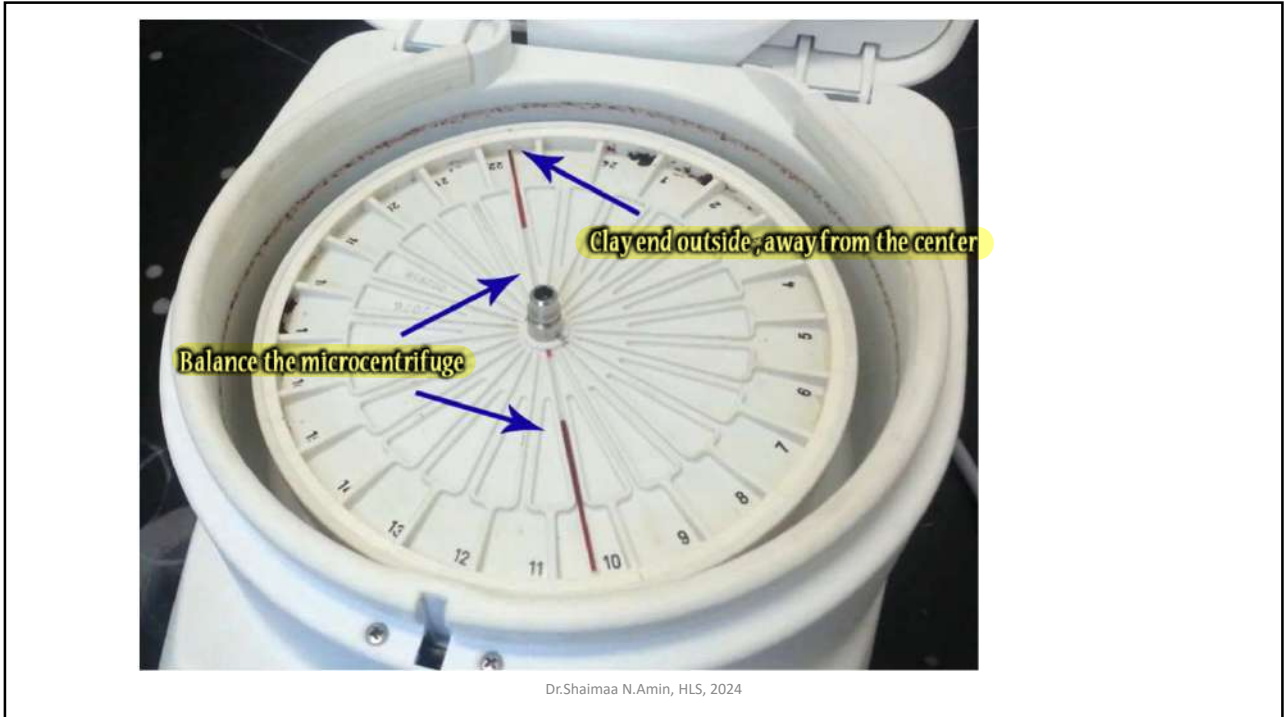
• بعد ما اسحب عينة الدم بغلف طرف ب واكس والطرف الثاني حيكون ع جهة مركز الجهاز، هيك بكون حافظت عالعيينة حتى ما افقد الدم اللي فيها مع سرعة الجهاز.. ولازم احط عدد زوجي من الانبويات لتكون قبال بعض وما تتكسر (balance)



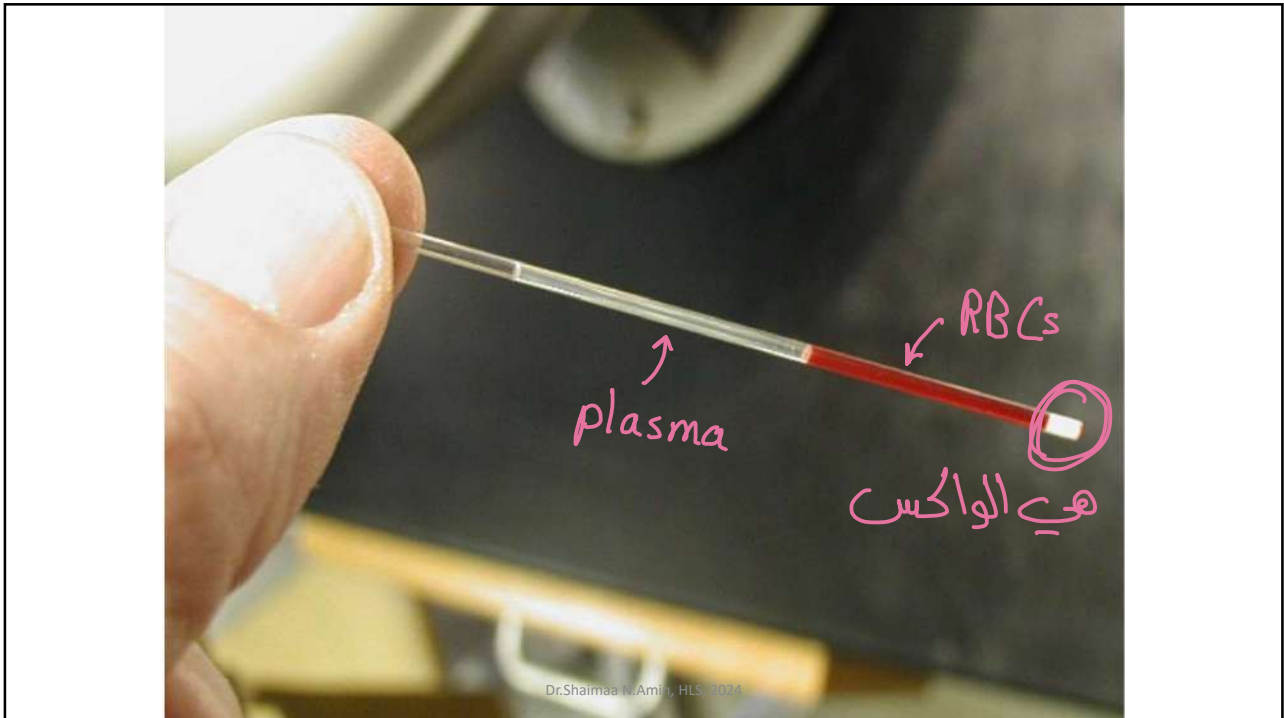
• بستغل عشر دقائق  
او اقل

Dr.Shaimaa N.Amin, HLS, 2024

32



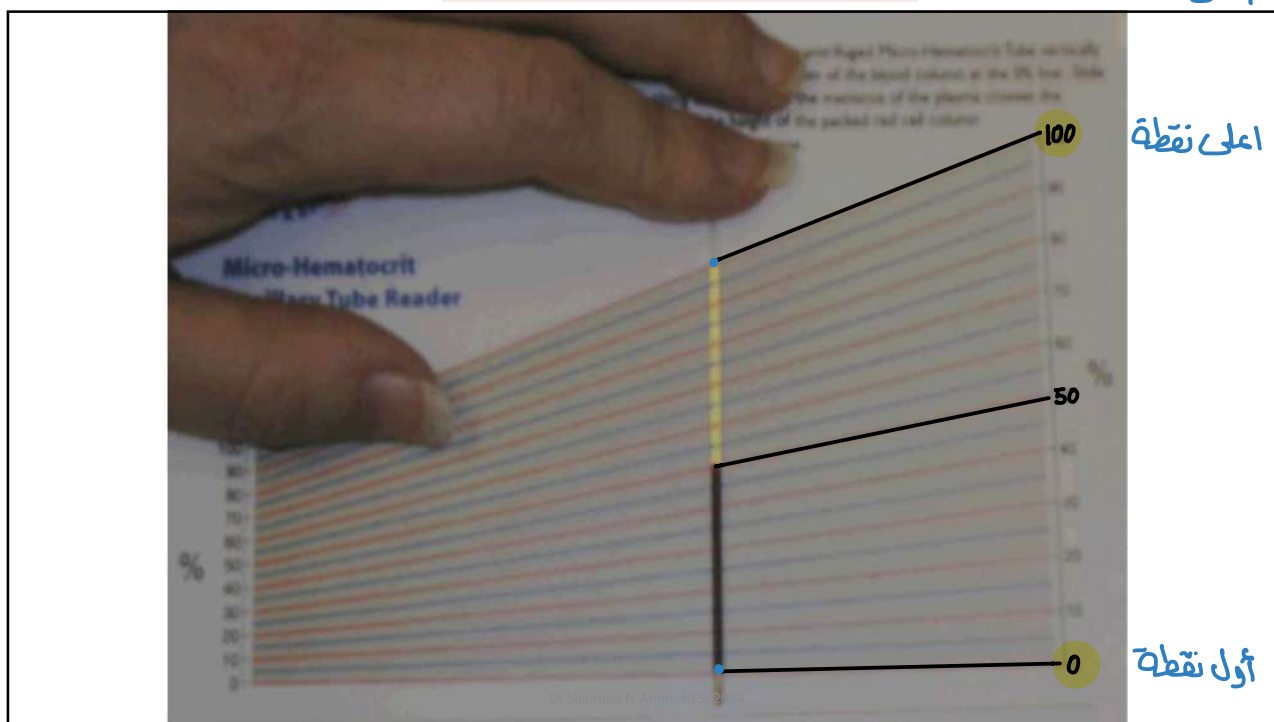
33



34

## Haematocrite reader

بحولها لتدرج



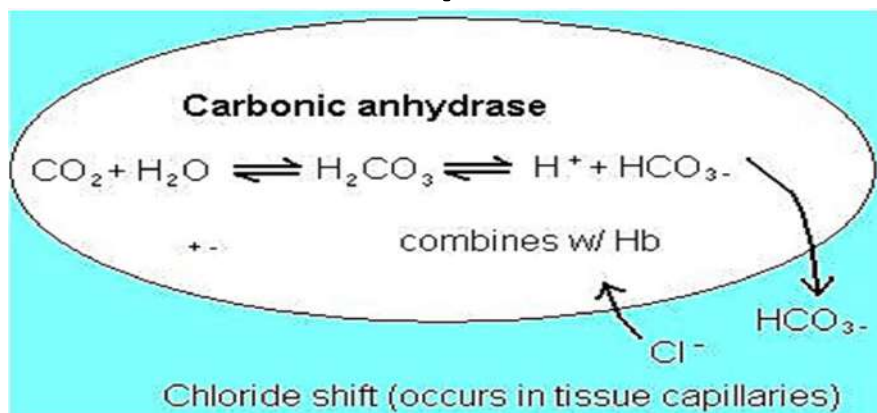
35

- \* سواء من اليمين أو من الشمال حوصل لنفس الرقم .
- \* هاد السلايد رح نطبقه باللاب .

### Haematocrite value is higher in venous blood why?

الخلايا الحمراء نتيجة لل osmosis اللي صار يكون حجمها اكبر

- Due to Cl<sup>-</sup> shift phenomena



Dr.Shaimaa N.Amin, HLS, 2024

36

## Clinical significance

- Diagnosis of **anemia, polycythemia**.
- To determine type of anemia calculate **MCV & other blood indices**.

Dr.Shaimaa N.Amin, HLS, 2024

37

• **بدي 3 معطيات لا حسبهم**

**The Erythrocyte Parameters MCH, MCV, and MCHC**

**1** Erythrocytes (RBC) (number/L blood)

**2** Hemoglobin (Hb) concentration (g/L blood)

**3**  $b/a = \text{hematocrit (Hct)}$  (L-RBC/L-blood)

**MCH (mean Hb mass/RBC)**

$$= \frac{\text{Hb conc.}}{\text{No. RBC}} \text{ (g/RBC)}$$

Normal: ~30pg

**MCV (mean volume of one RBC)**

$$= \frac{\text{Hct}}{\text{No. RBC}} \text{ (L/RBC)}$$

Normal: ~90fl

**MCHC (mean Hb conc. in RBCs)**

$$= \frac{\text{Hb conc.}}{\text{Hct}} \text{ (g/L RBC)}$$

Normal: ~320g/L

$\text{MCH} / \text{MCV} = \text{MCHC}$

Erythrocyte

Dr.Shaimaa N.Amin, HLS, 2024

38

## Conditions in which the PCV varies from normal:

### A) The conditions in which PCV is increased: ↑ Hematocrit

- **Polycythemia:** physiological (high altitudes or newly born) or pathological. *نتيجة dehydration*
- **Dehydration** (vomiting, diarrhea, profuse sweating), **burns** , loss of water (**Hemoconcentration**). ↓ plasma volume

### B) The conditions in which PCV is decreased:

- **Anemia.**
- **Overhydration, pregnancy (Hemodilution)**

Dr.Shaimaa N.Amin, HLS, 2024

39

## Packed Cell Volume(Hematocrit) station

- **The station for this experiment contains:**

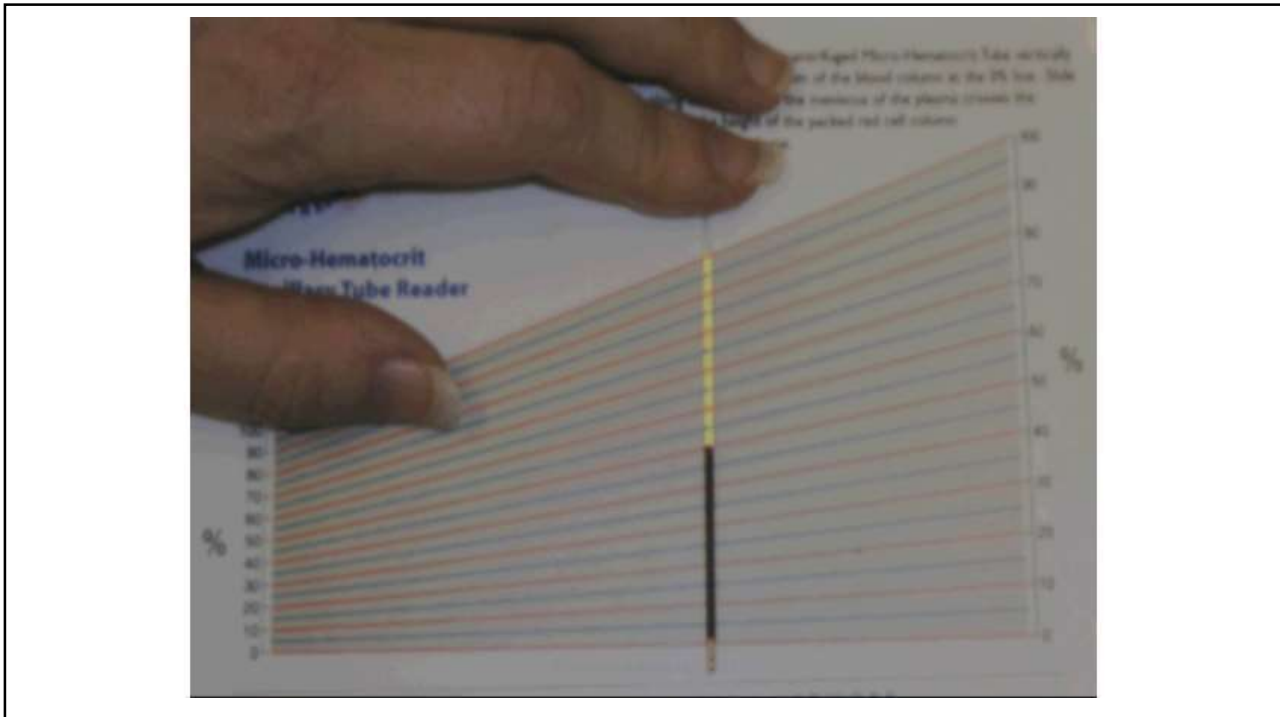
A capillary tube containing blood centrifuged + Reading scale

- **What will you do at the station?**
- You have to read the Hct of the provided sample by adjusting it on the reading scale.

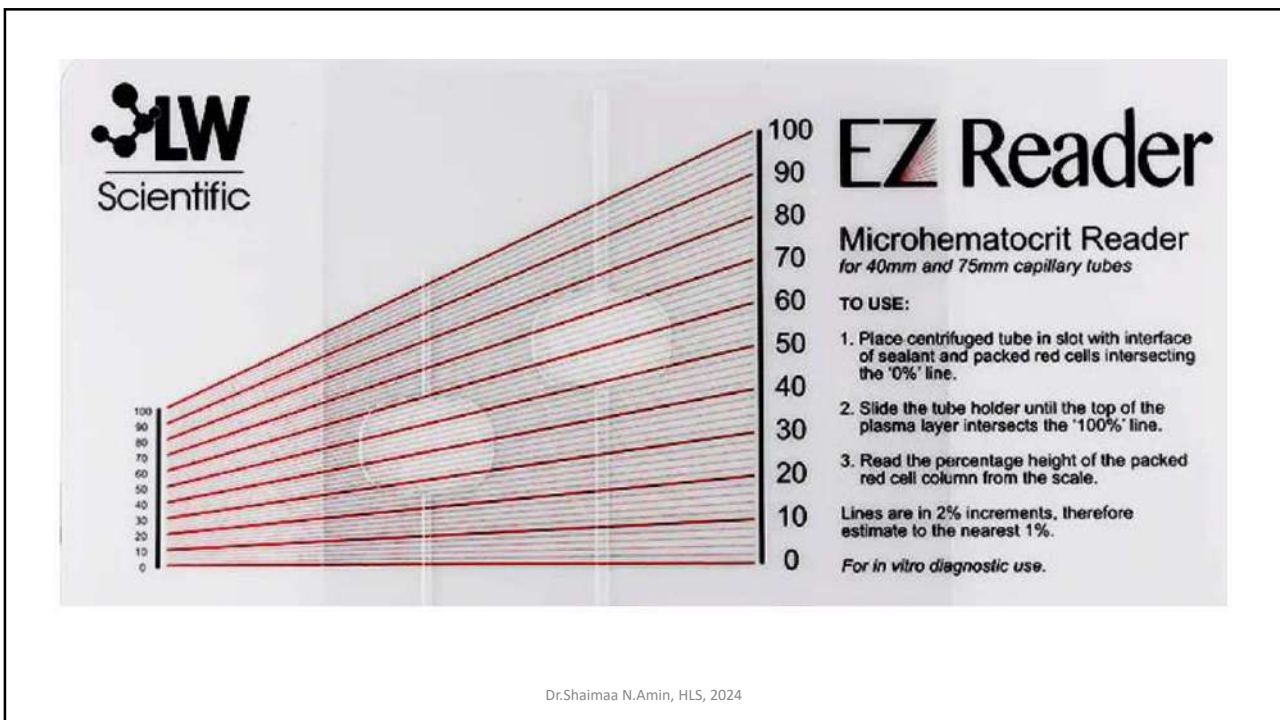
\* أول نقطة بتكون فوق الواصل

Dr.Shaimaa N.Amin, HLS, 2024

40



41



Dr.Shaimaa N.Amin, HLS, 2024

42

سرعة الترسيب: من الاختبارات المشهورة بحالات ال destruction, inflammation, stimulation لل immune system  
 بهاي التجربة بحط ع عينة الدم sodium citrate حتى ما يصير تجلط، بعد ما نوقف الأنبوية ساعة او ساعتين بلاقي انو الخلايا بلشت تترسب وبتزيد mass to surface area tissue

## Erythrocyte Sedimentation Rate (ESR)

- **Definition:** distance sedimented in a vertical column of blood after 1 & 2 hours.

### Principle

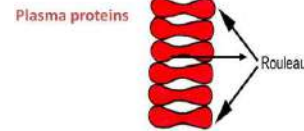
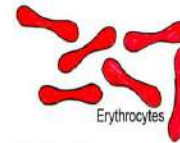
- if anticoagulant is added to blood and blood is left to stand for 2 hours → RBCS sediment

- specific gravity

RBCS	1090
plasma	1030

- Plasma proteins neutralize charges of RBCS →
- ↓ repulsion force between RBCS → rouleaux formation → RBCS sedimentation

Westergren tube

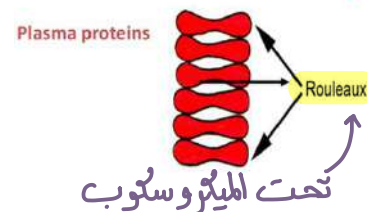
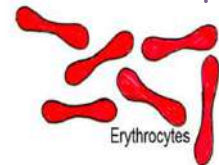


43

## What is Rouleaux formation? Describe its possible mechanism.

- بقرىوا الخلايا من بعض
- Globullins & fibrinogen →
  - Neutralize charges of RBCs → Rouleaux formation → بزود عملية الترسيب.
  - ++ ratio of mass to surface area of RBCs  
++ sedimentation

بالدم العادي (تتافر)



تحت الميكروسكوب

Dr.Shaimaa N.Amin, HLS, 2024

44

## steps

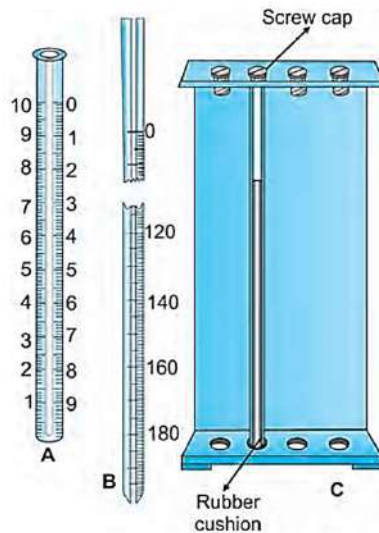
1. In a test tube 2 ml blood + 0.5 ml  $\text{Na}^+$  citrate
2. Fill **Westergren tube** to the mark 0 and put the tube in the stand vertically
3. Read the height of plasma column on top of RBCs after 1 and 2 hours

RBCS



Dr.Shaimaa N.Amin, HLS, 2024

45

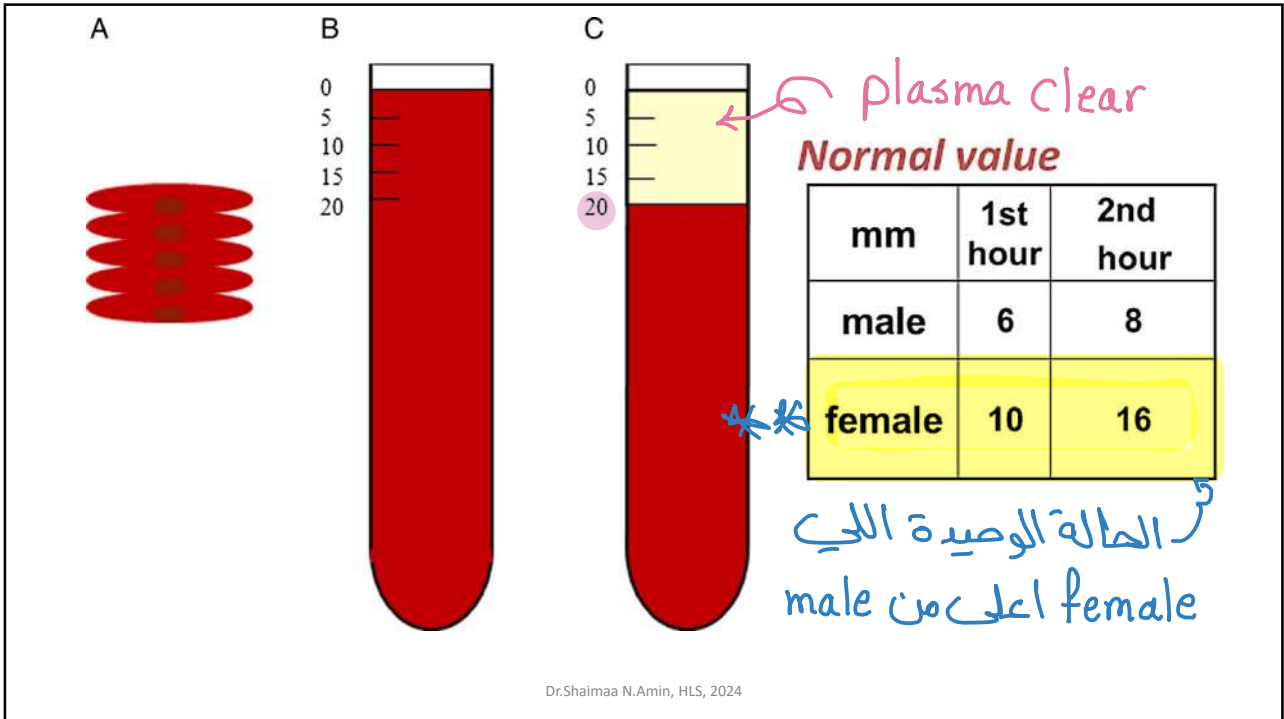


**Figure 1-17:** Determination of ESR. (A) Wintrobe tube; (B) Westergren tube; (C) Westergren stand with the Westergren tube in position

Dr.Shaimaa N.Amin, HLS, 2024

46





47

عند ال female ال mass اقل من male يعني ال repulsion اقل  
ف العملية تكون اسهل وسرعة الترسيب اعلى

**A. Physiological Variations in ESR.**

**Sex.** The ESR is somewhat higher in females, probably due to lower hematocrit (PCV).

**Pregnancy.** The ESR begins to rise after about 3rd month of pregnancy and returns to normal a few weeks after delivery. Hemodilution during pregnancy and increased fibrinogen: albumin ratio are probably the cause of increased rouleaux formation.

**B. Pathological Increase in ESR** مايشخص مرض فيه وانما يتابع تطور  
infections, tissue destruction (myocardial infarction) & malignancy, anemia, TB & fractures. globulin ↑ → الترسيب ↑  
ESR is increased in inflammatory conditions by 2 mechanisms:

1. Tissue destruction.
2. Increasing antibodies which are plasma proteins.

↓ mass

Since ESR increases with age, the upper limit of normal can be calculated as:

Males	= Age ÷ 2,	Normal *
Females	= Age + 10 ÷ 2.	

Dr.Shaimaa N.Amin, HLS, 2024

48

### **What is the clinical significance of this test?**

- ESR is not a diagnostic test (not a specific test).
- It is a prognostic test i.e. indicates progress of the disease & effect of treatment.
- Increased ESR?
- Decreased ESR → polycythemia, afibrinogenemia.  
↓ Fibrinogen

Dr.Shaimaa N.Amin, HLS, 2024

49

### **Erythrocytes Sedimentation Rate (ESR) Station**

- The station for this experiment contains:
- A vertically held tube (for 2 hours) containing anticoagulated blood.
- What will you do at the station?
- Without moving the rack or the tubes check how many mm is the height of the clear plasma column (cleared from RBCs that were sedimented).

• لا مقياس المس  
• بدنا نطلع سرعة الترسيب

Dr.Shaimaa N.Amin, HLS, 2024

50

## Erythrocytes Sedimentation Rate (ESR) Station

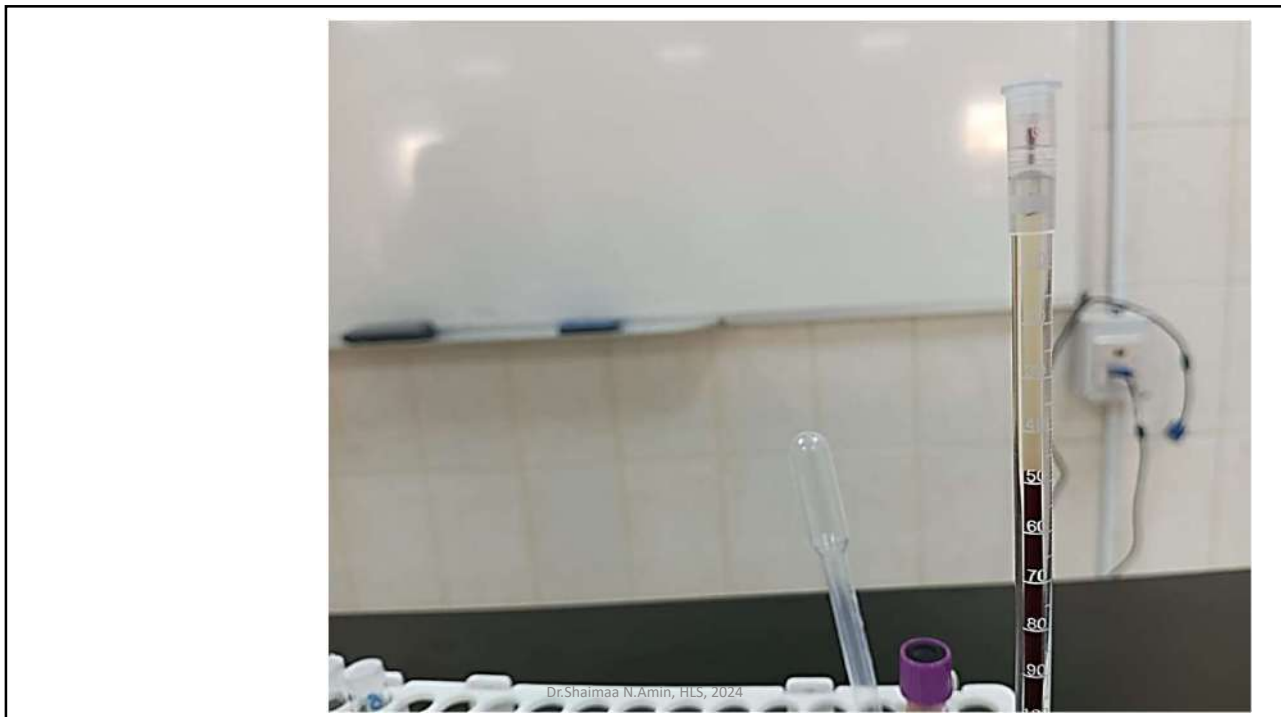
- The station for this experiment contains:
- A vertically held tube (for 2 hours) containing anticoagulated blood.
- **What will you do at the station?**
- Without moving the rack or the tubes check how many mm is the height of the clear plasma column (cleared from RBCs that were sedimented).

**For example: in the given photo ESR =40 mm**

Dr.Shaimaa N.Amin, HLS, 2024



51



Dr.Shaimaa N.Amin, HLS, 2024

52

## DETERMINATION OF BLOOD GROUPS



### Importance of test:

Blood grouping and cross matching is an essential requirement before blood can be transfused into any individual. Blood grouping is also done to settle paternity disputes and other medico-legal problems.

### Principle:

The red cells contain a series of antigens (agglutinogens) on their surface, while the plasma contains antibodies (agglutinins). To determine the blood group, the red cells are made to react with sera containing known agglutinins. The slide is then examined under the microscope to detect the presence or absence of agglutination and hemolysis of RBCs. In actual practice most agglutination in transfusion is caused by two antigen-antibody systems: the ABO and Rh system.

Dr.Shaimaa N.Amin, HLS, 2024

53



بجمل  
3 نقاط  
بخطهم  
3 مع  
antibodies

Dr.Shaimaa N.Amin, HLS, 2024

54

-Wait for **8–10 minutes**

-For agglutination to occur, the concentration of **agglutinogens** and agglutinins has to be about the same. If the difference is too much, there may be a doubtful reaction

Homogeneous  
No reaction

A, B اسر من D

**Why should you wait for 8–10 minutes before checking for agglutination?**  
This much time is required for antigen-antibody reaction to occur.

Dr.Shaimaa N.Amin, HLS, 2024

55

## Materials:

- 1- Sterile disposable lancet
- 2- Alcohol and cotton swabs
- 3- Anti-A , Anti-B and anti-D Sera
- 4- Clean glass slides
- 5- Glass marking pencil
- 1- Mixing sticks

Dr.Shaimaa N.Amin, HLS, 2024

56

**Procedure:**

1. Divide the slide by the marker to 2 parts A and B.
2. Sterile your finger with alcohol and leave to dry.
3. Prick your finger to obtain blood. Place 1 drop of blood on each part of the marked slide.
4. Add 1 drop of anti-A serum (blue) to the A-side. And 1 drop of anti-B serum (yellow) to the side B.
5. Mix the blood and serum in each compartment by tilting the slide gently to and fro for 1-2 minutes or by using a mixing stick (one for each side).
6. Observe the slide for any agglutination of red cells. Agglutination is usually visible by the naked eye as dark red clumps of different sizes.
7. If there is no agglutination, keep the slide tilting occasionally and look for agglutination from time to time

Dr.Shaimaa N.Amin, HLS, 2024

57

**Results:**

1. If **agglutination** occurs on side **A** only: you have the blood type **A**.
2. If it occurs on side B only: you have type B.
3. If a reaction occurs on both sides: you have type AB.
4. If no reaction occurs on both sides: you have type O.

Agglutination is observed with Anti: .....

Your blood group is: .....

$O \rightarrow RH^+$

Dr.Shaimaa N.Amin, HLS, 2024

58

**Rh Factor:****Procedure:**

- 1- Place 2 drops of your blood with one drop of anti-D on a dry clean microscopic slide.
- 2- Mix the anti-serum and blood by racking the slide gently to and fro for 2-3 minutes.
- 3- If agglutination occurs, the blood is Rh positive.

**Result:**

Agglutination present or absent: .....

You are Rh: .....

Dr.Shaimaa N.Amin, HLS, 2024

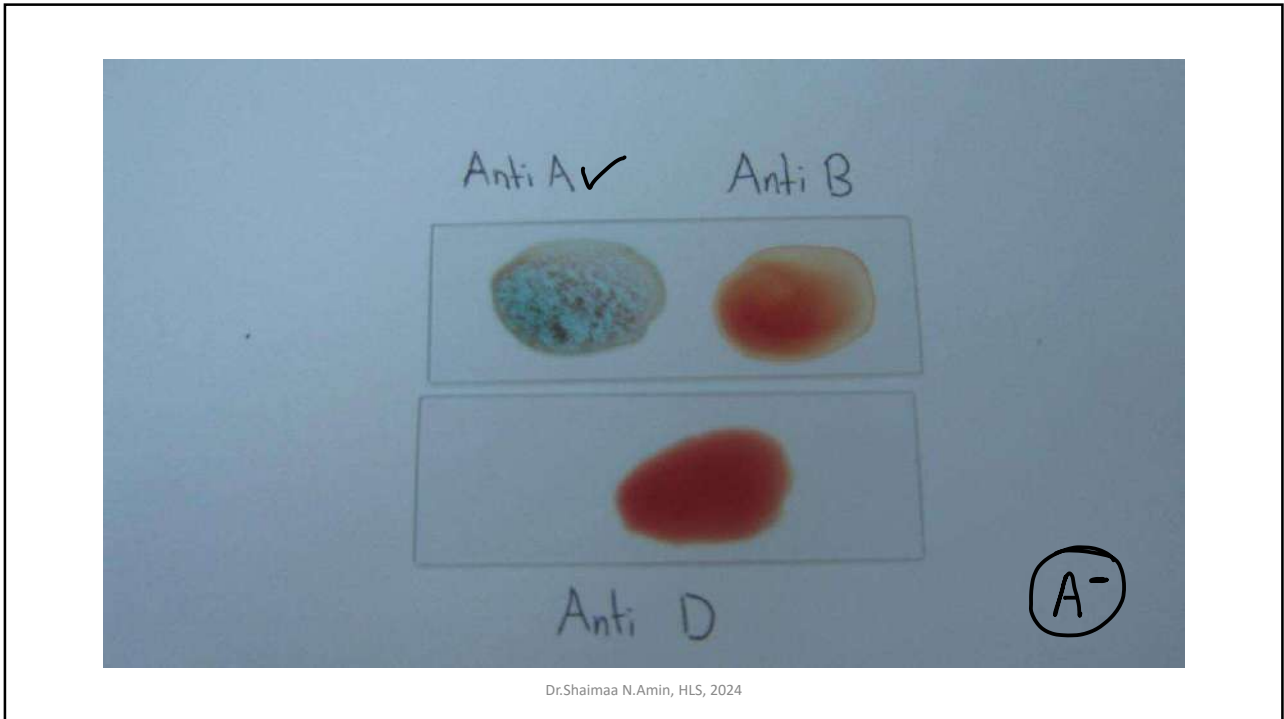
59

## Blood groups Station

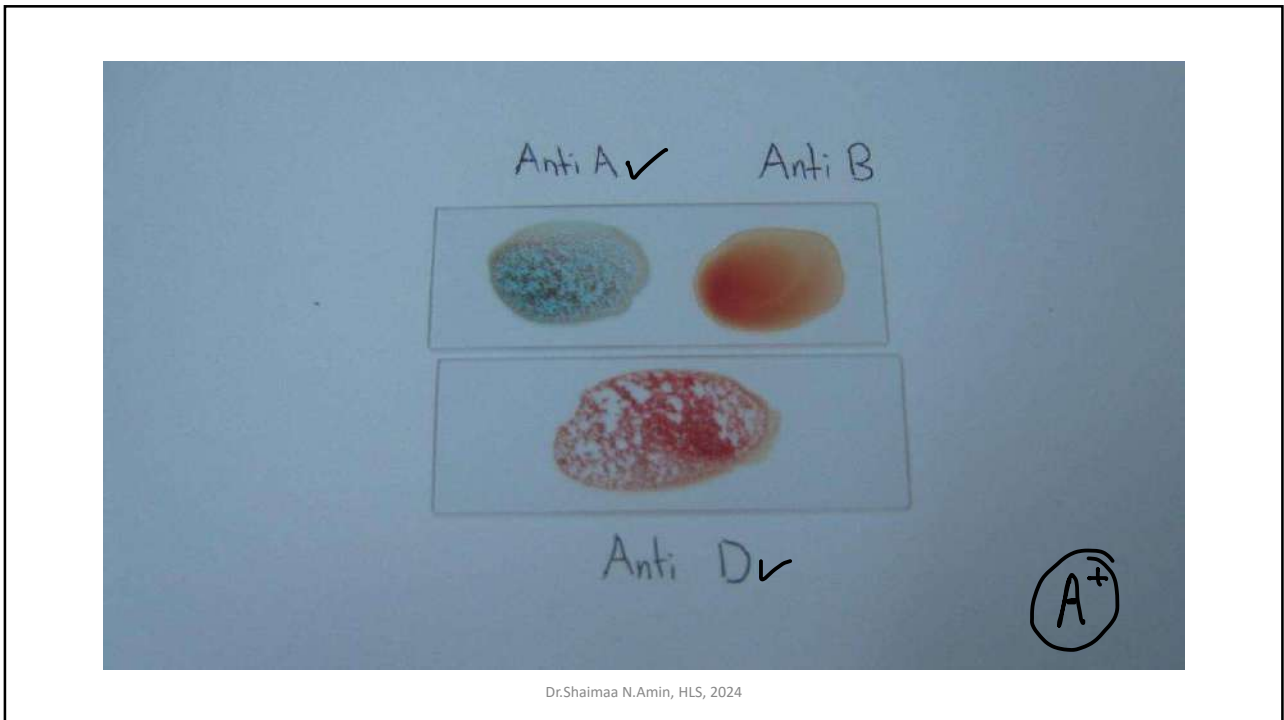
- **The station for this experiment contains:**
- Sterile lancet, Alcohol, cotton, glass slides, Antibodies (Anti A, Anti B, Anti-D ), A blood-containing tube and pipette to use if you don't want to prick your finger (please keep the safety precautions).
- **What will you do at the station?**
- Add blood drops over 3 sites on the slide, add a drop of each antibody to each drop separately, and check for agglutination (clumping of cells), what is the blood group?

Dr.Shaimaa N.Amin, HLS, 2024

60

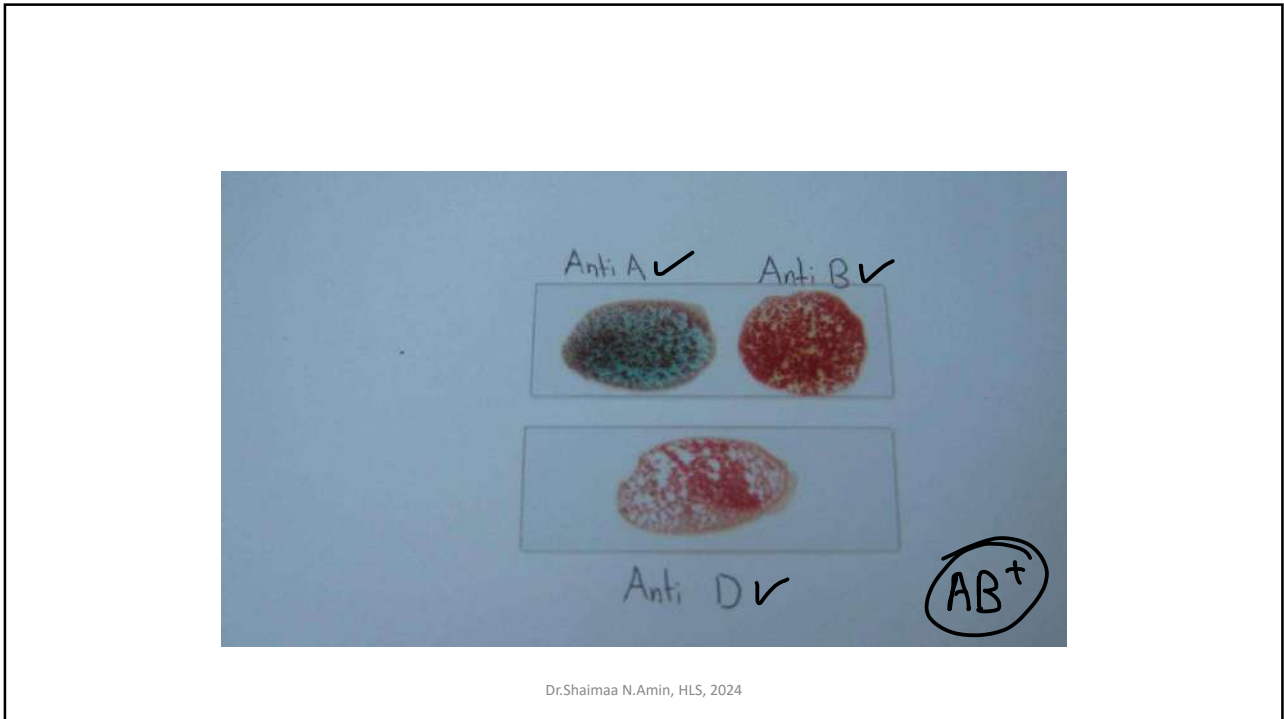


61

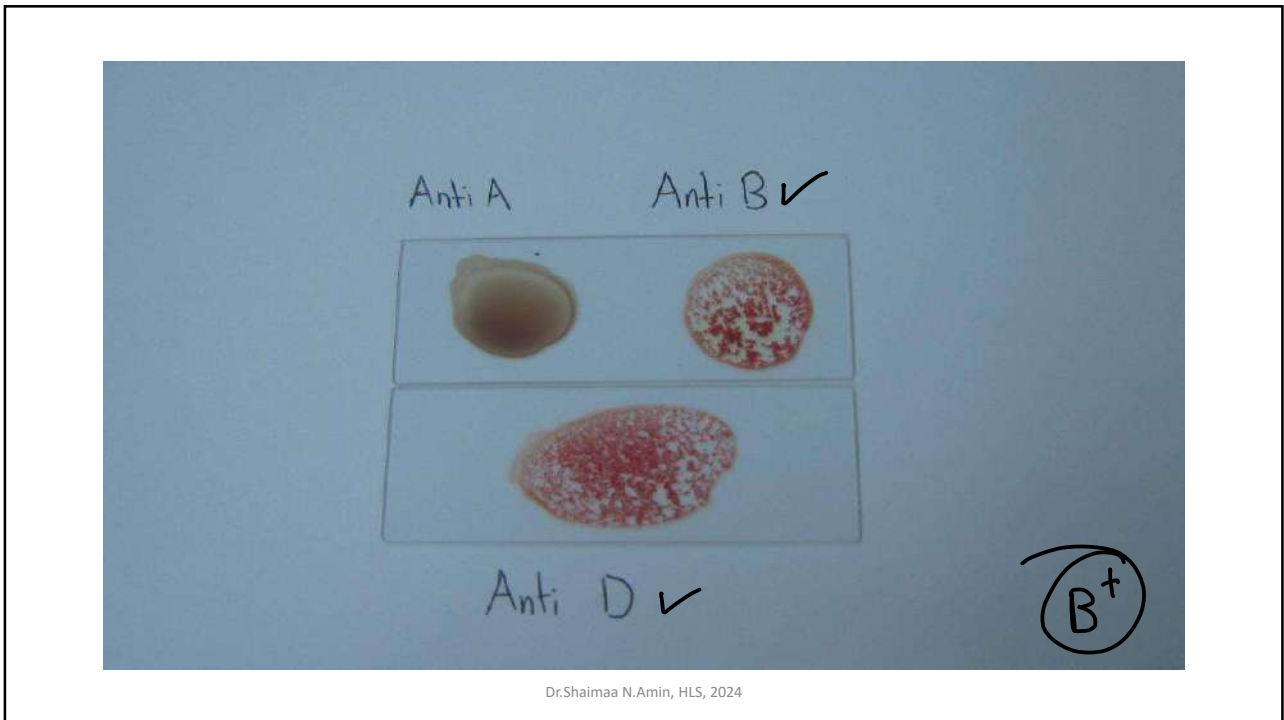


62





63



64



65



🎀💕 بالتوفيق

*danez*