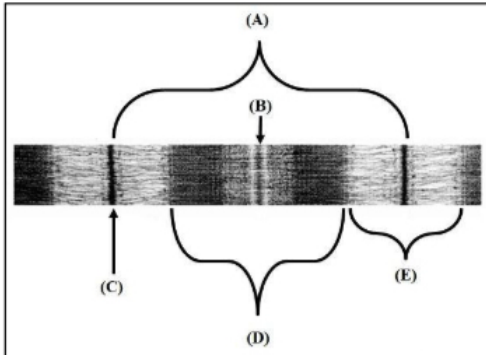




Scientific team

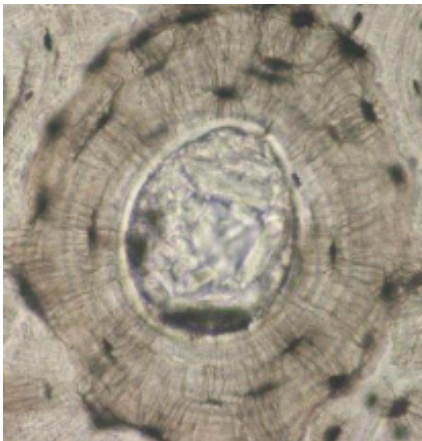
## Histology Quiz

1) Regarding the structure shown, which of the following is true?



- A) A widens during contraction
- B) B is the Z line
- C) D corresponds to the thick myofilaments
- D) E is called the H zone
- E) C is an artifact

2) The structure shown can be found in:

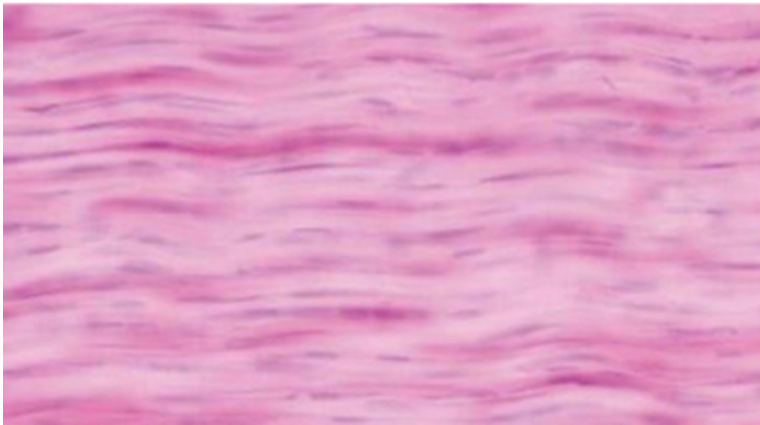


- A) Primary bone
- B) Secondary bone



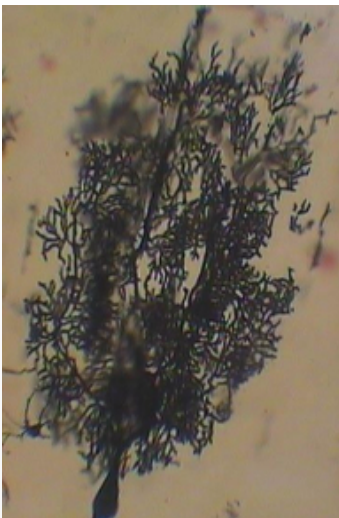
Scientific team

3) You and your friend are examining the shown tissue under the microscope. Your friend says it's 'skeletal muscle tissue'; you believe it's 'dense collagenous regular connective tissue'. Your lab instructor told you that you are correct. How did you know? (Choose one best answer)



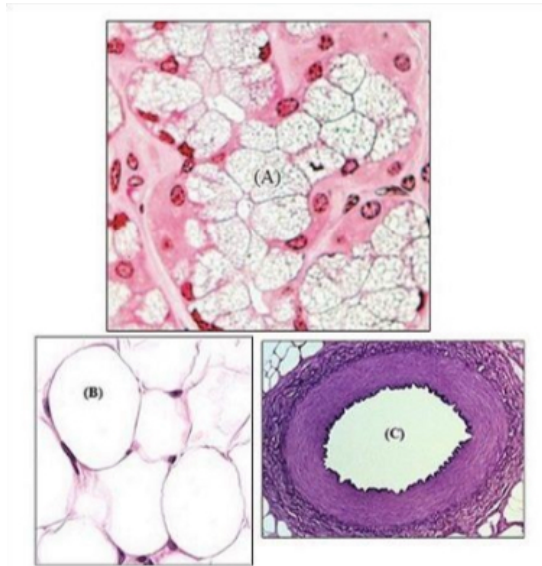
- A) in the dense collagenous tissue, the nuclei are arranged in parallel layers
- B) The nuclei are more in the skeletal tissue
- C) In a longitudinal section, we should see cross-striation in the skeletal muscle tissue
- D) The red color is darker in the regular tissue

4) The axon of the large neuron shown passes through:



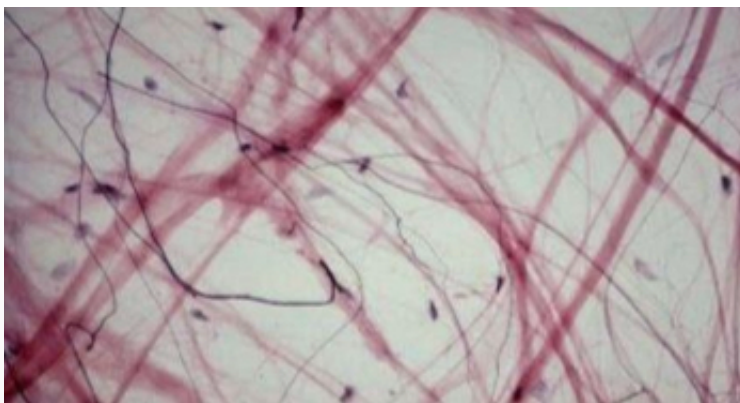
- A) Granular layer of the cerebellar cortex
- B) White matter of the spinal cord
- B) Cerebral cortex
- C) Molecular layer of the cerebellar cortex

5) The images shown have some whitish areas indicated by the letters (A), (B), and (C). Which of these areas is correctly identified?



- A) (A) --- White adipocyte
- B) (B) --- Cavity of an organ
- C) (C) --- White adipocyte
- D) (B) --- Mucous gland
- E) (A) --- Mucous gland

6) In the tissue shown, the nuclei, most probably, belong to:

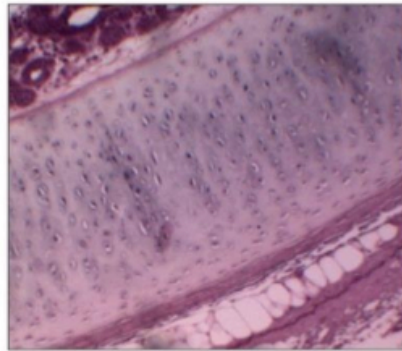
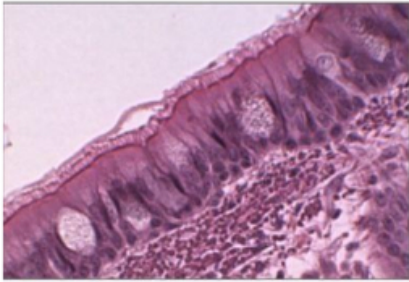


- A) Mast cells
- B) Adipocytes
- C) Fibroblasts
- D) Macrophages



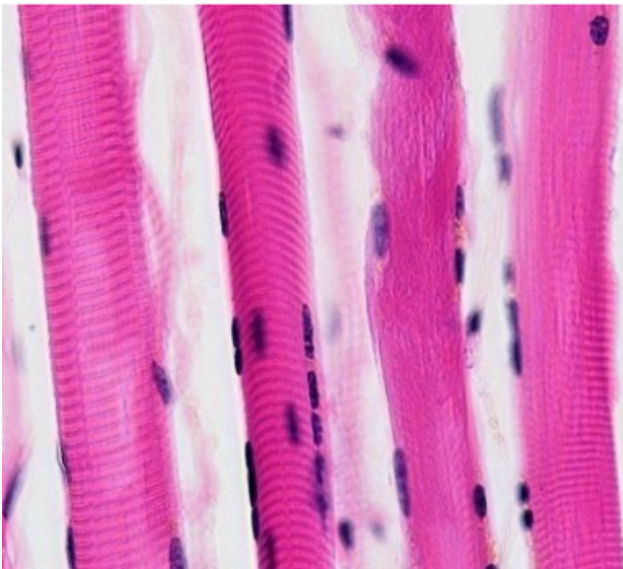
Scientific team

7) Which of the following organs contains BOTH of the shown tissue?



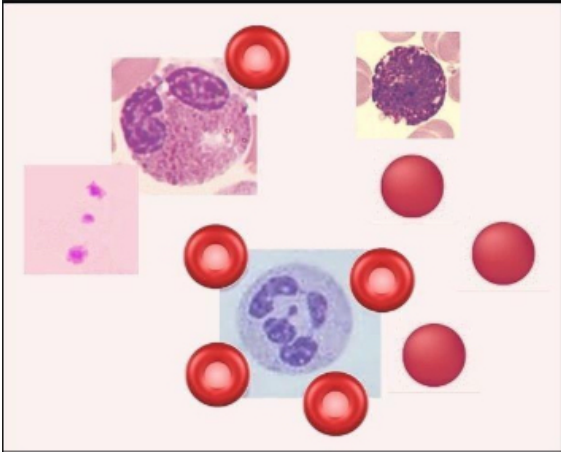
- A) Stomach
- B) Trachea
- C) Costal cartilages
- D) Auricle of the ear

8) Each one of the long cylindrical structures shown is a:



- A) Myofibril
- B) Myofilament
- C) Skeletal muscle
- D) Muscle fiber

9) A sample of blood taken from a patient is shown. What can you see? (More than one option can be chosen).



- A) There are abnormal red blood cells
- B) Nuclei are found in the platelets
- C) The patient is a female
- D) Basophils are acidophilic

10) The tissue shown can be found in the:



- A) Costal cartilages
- B) Auricle of the ear
- C) Menisci of the knee joint
- D) Trachea



Scientific team

**Answers:**

<b>1</b>	<b>2</b>	<b>3</b>	<b>4</b>	<b>5</b>	<b>6</b>	<b>7</b>	<b>8</b>	<b>9</b>	<b>10</b>
C	B	C	A	E	C	B	D	A+C Both are Correct	B