

GUS

Lab (3)

Anatomy of Pelvis & Genital System

1- Urogenital hiatus.

2- Levator prostate or sphincter vaginae.

3- Puborectalis.

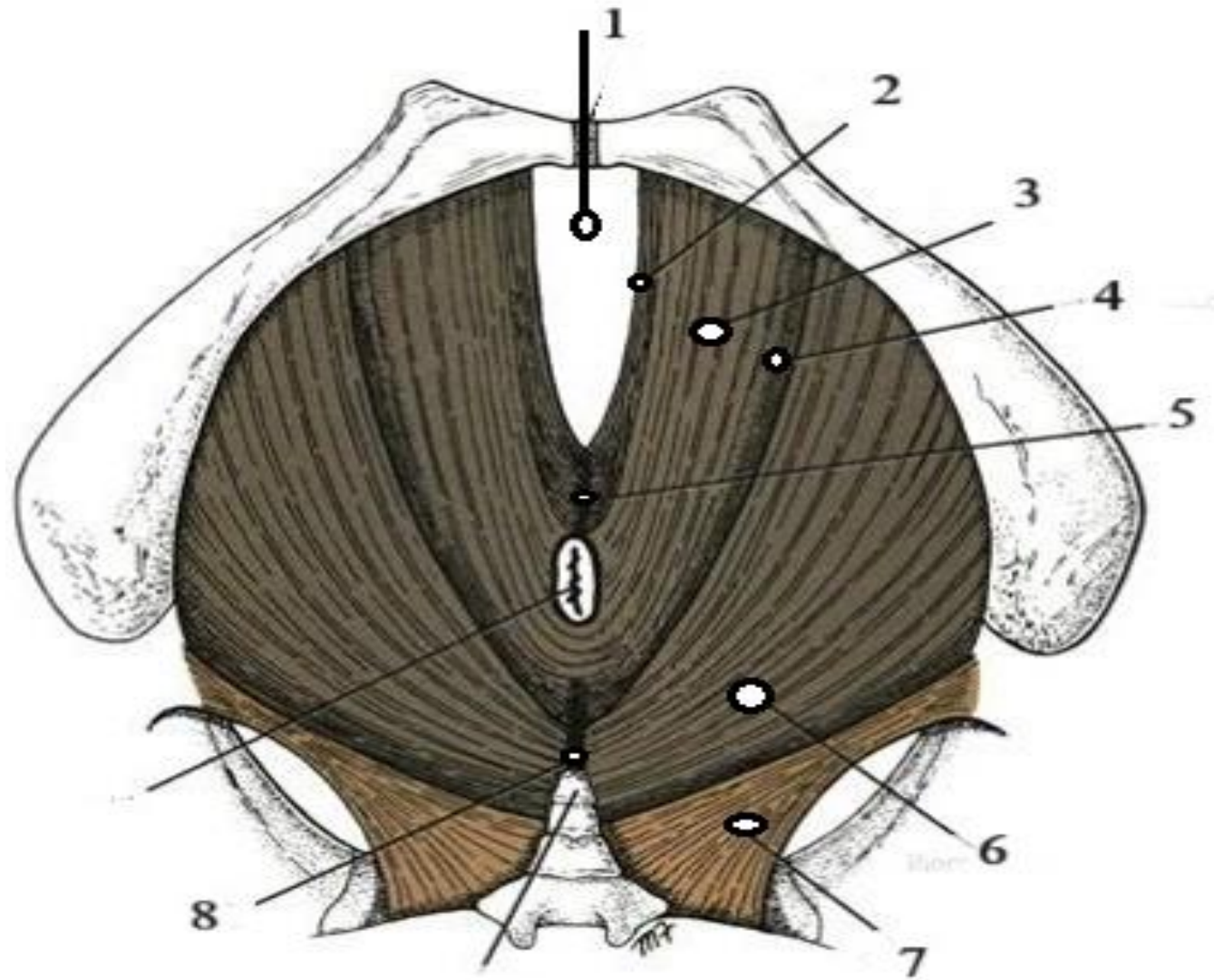
4- Pubococcygeus proper.

5- Perineal body.

6- Iliococcygeus.

7- Coccygeus.

8- Anococcygeal body.



1- Prostatic utricle.

2- Perineal body.

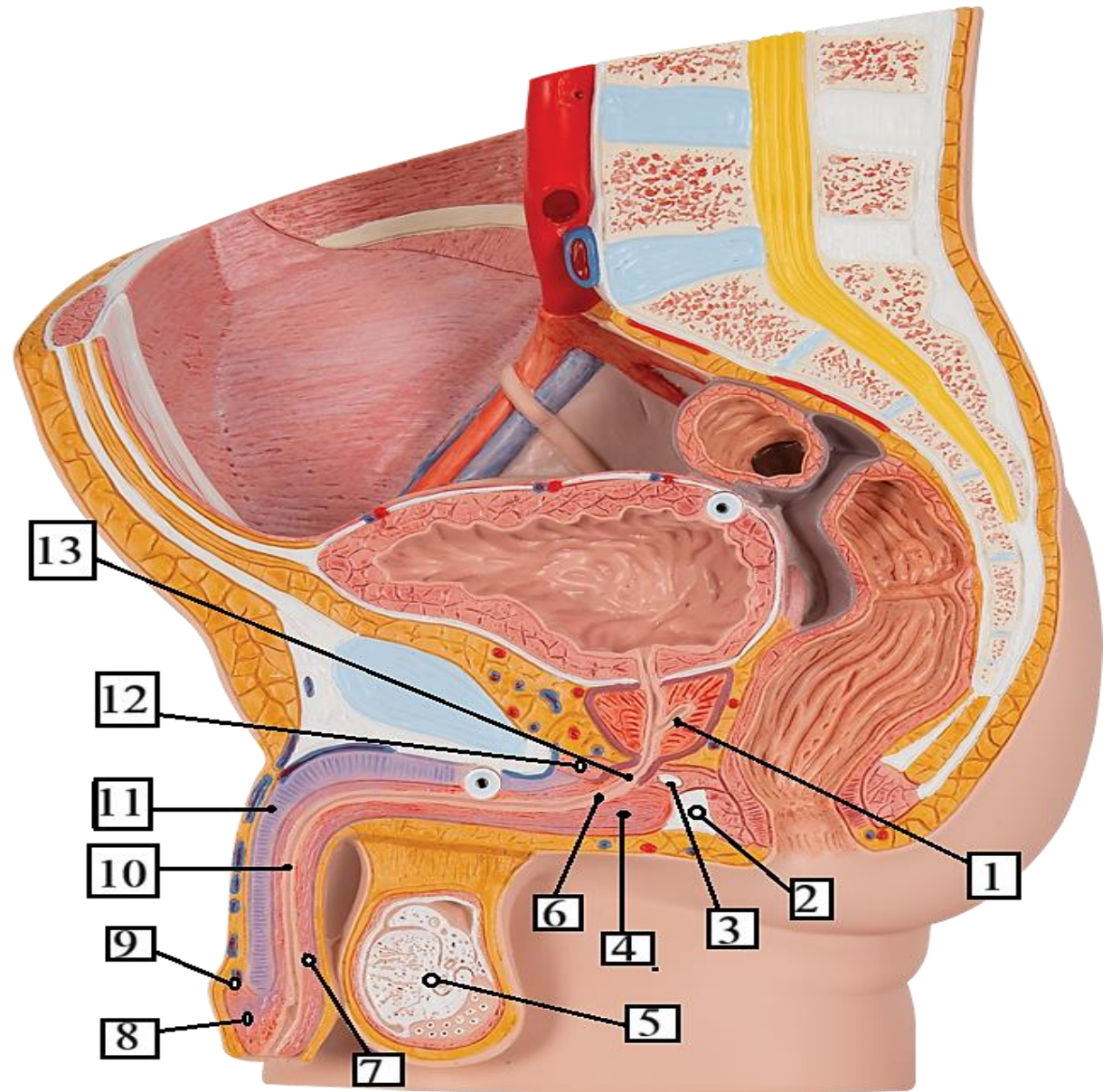
3- Bulbourethral gland.

4- Bulb of penis.

5- Testis.

6- Bulbar part of spongy urethra.

7- Corpus spongiosum.



8- Glans penis.

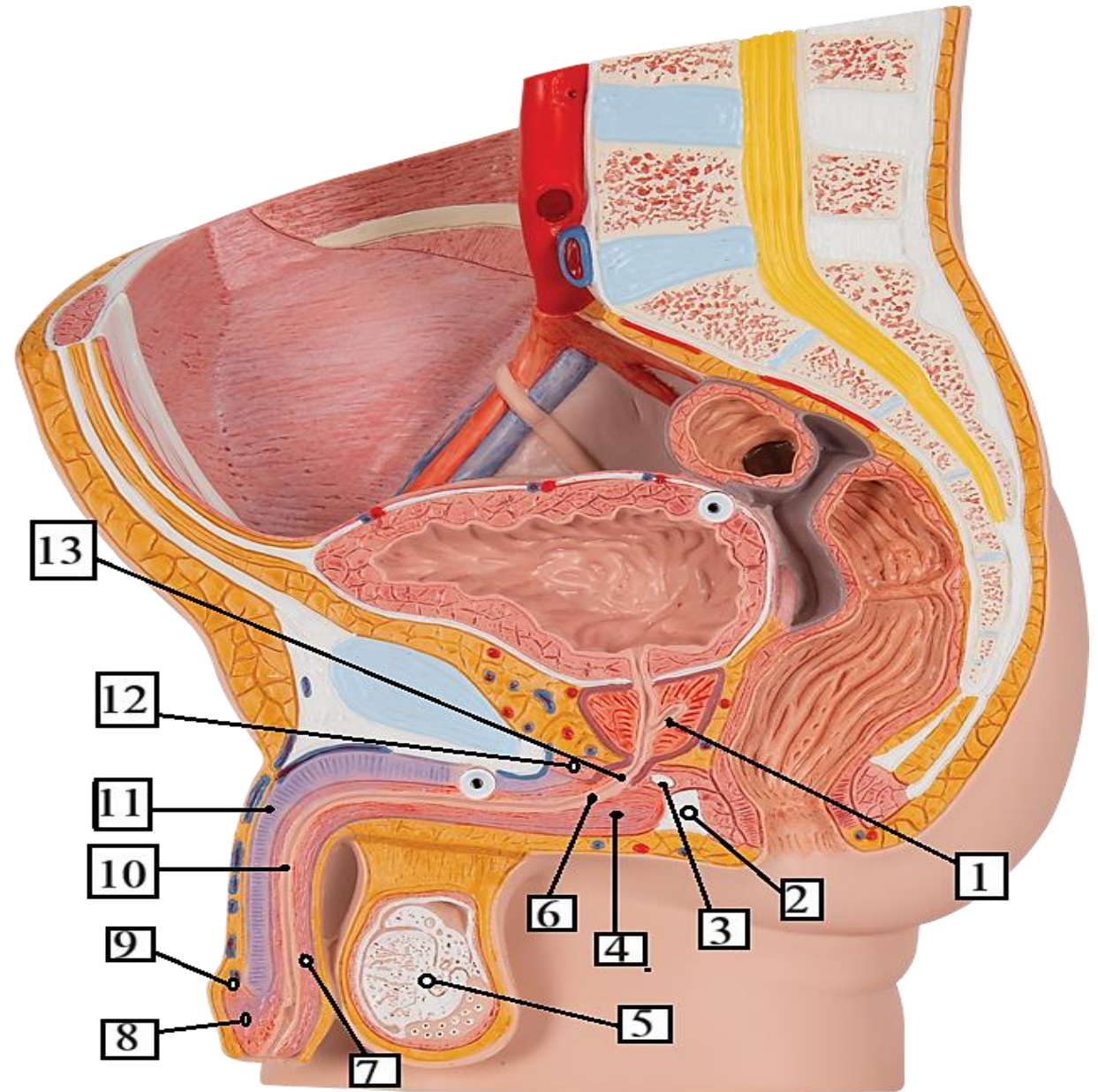
9- Corona of the glans.

10- Spongy urethra.

11- Corpus cavernosum.

12- Urogenital diaphragm.

13- Membranous urethra.



1- Ductus deferens.

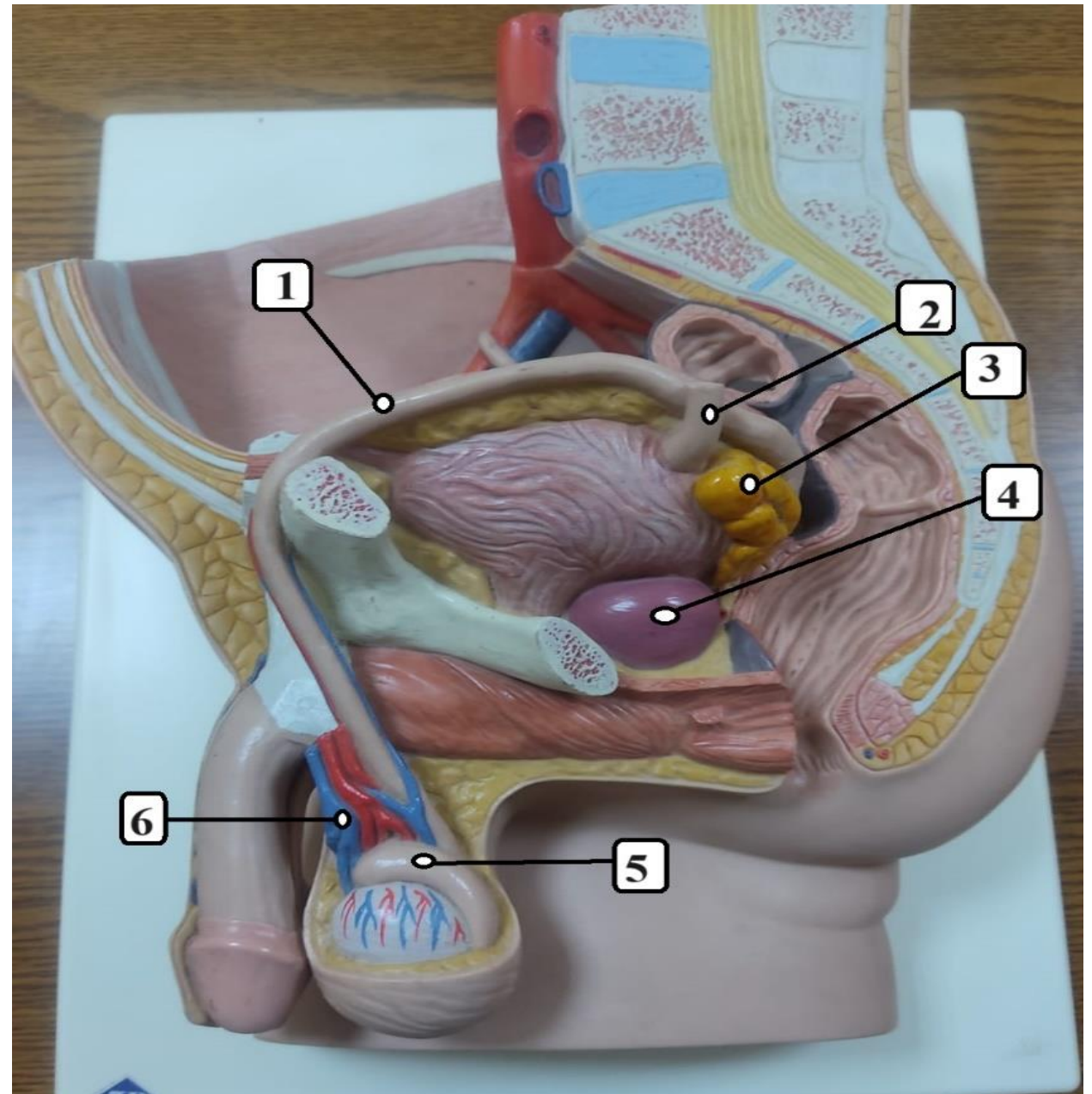
2- Ureter.

3- Seminal vesicle.

4- Prostate gland.

5- Head of epididymis.

6- Pampiniform plexus of veins.



1- Tunical space.

2- Seminiferous tubules.

3- Rete testis

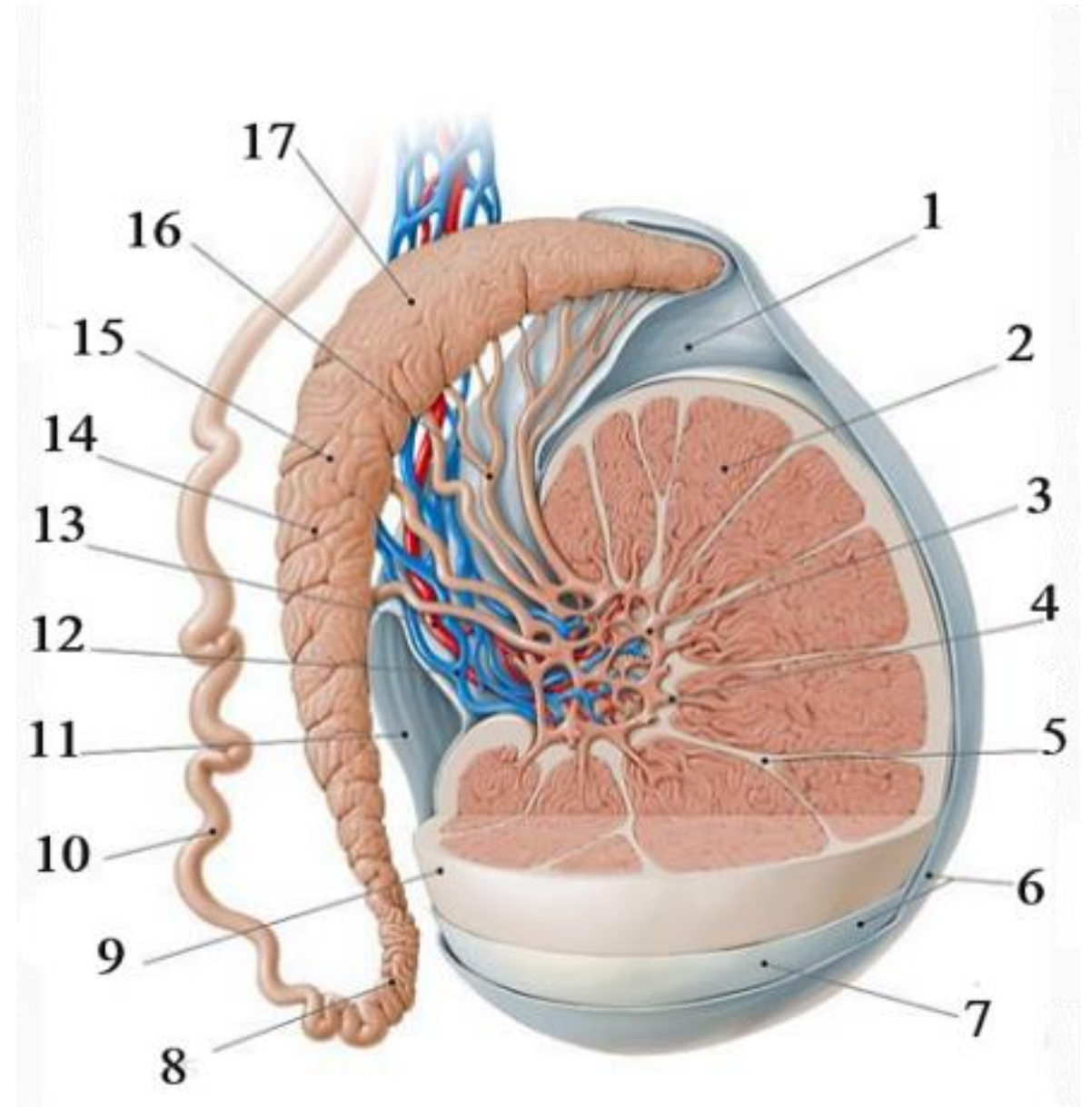
4-Tubuli recti.

5- Septum.

6- Tunica vaginalis.

7- Visceral layer of tunica vaginalis.

8- Tail of epididymis.



9- Tunica albuginea.

10- Ductus deferens.

11- Parietal layer of tunica vaginalis.

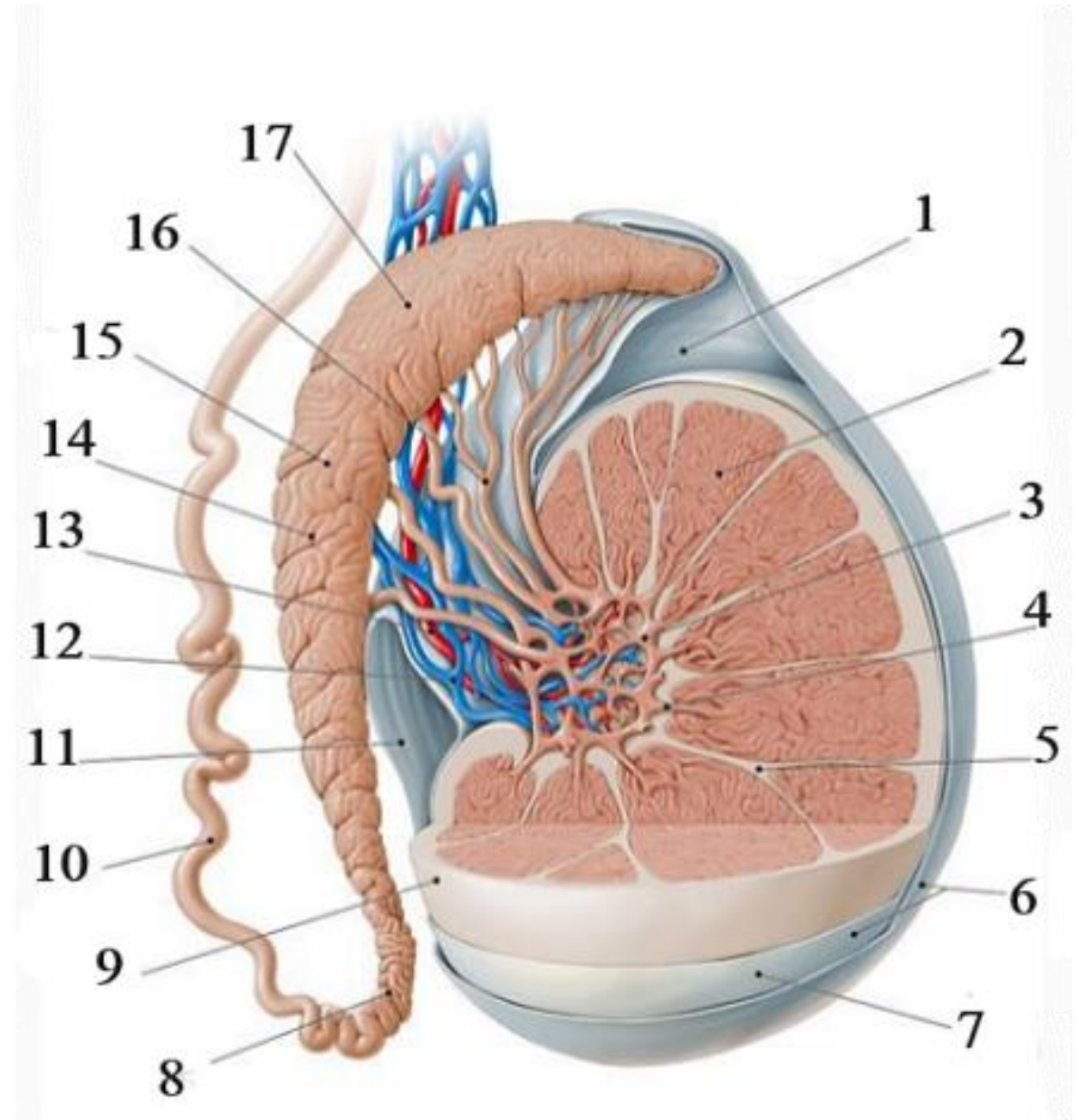
12- Pampiniform plexus of veins.

13- Testicular artery.

14- Body of epididymis.

16- Efferent ductules.

17- Head of epididymis.



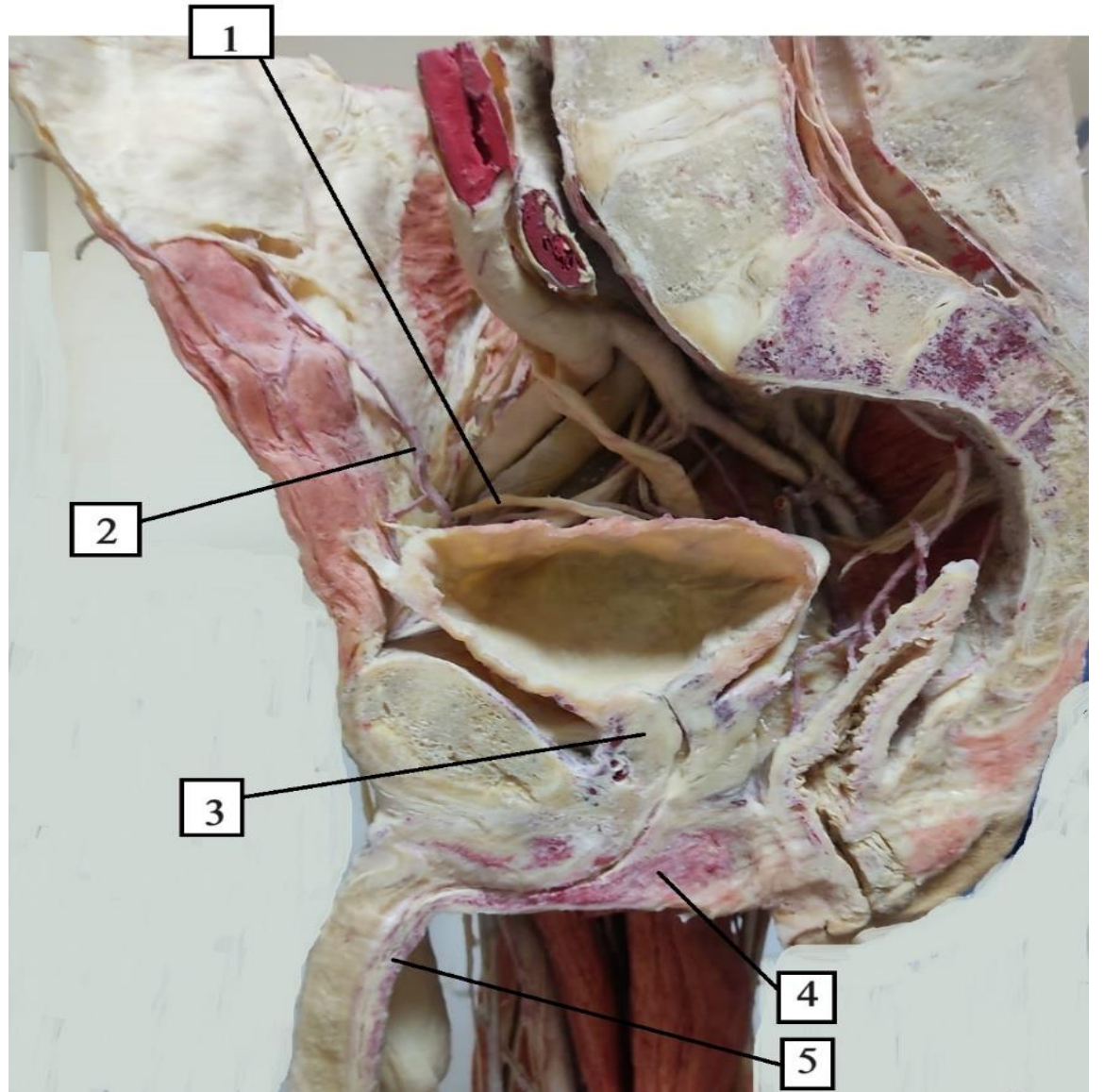
1- Ductus deferens.

2- Inferior epigastric artery.

3- Prostate gland.

4- Bulb of penis.

5- Corpus spongiosum.

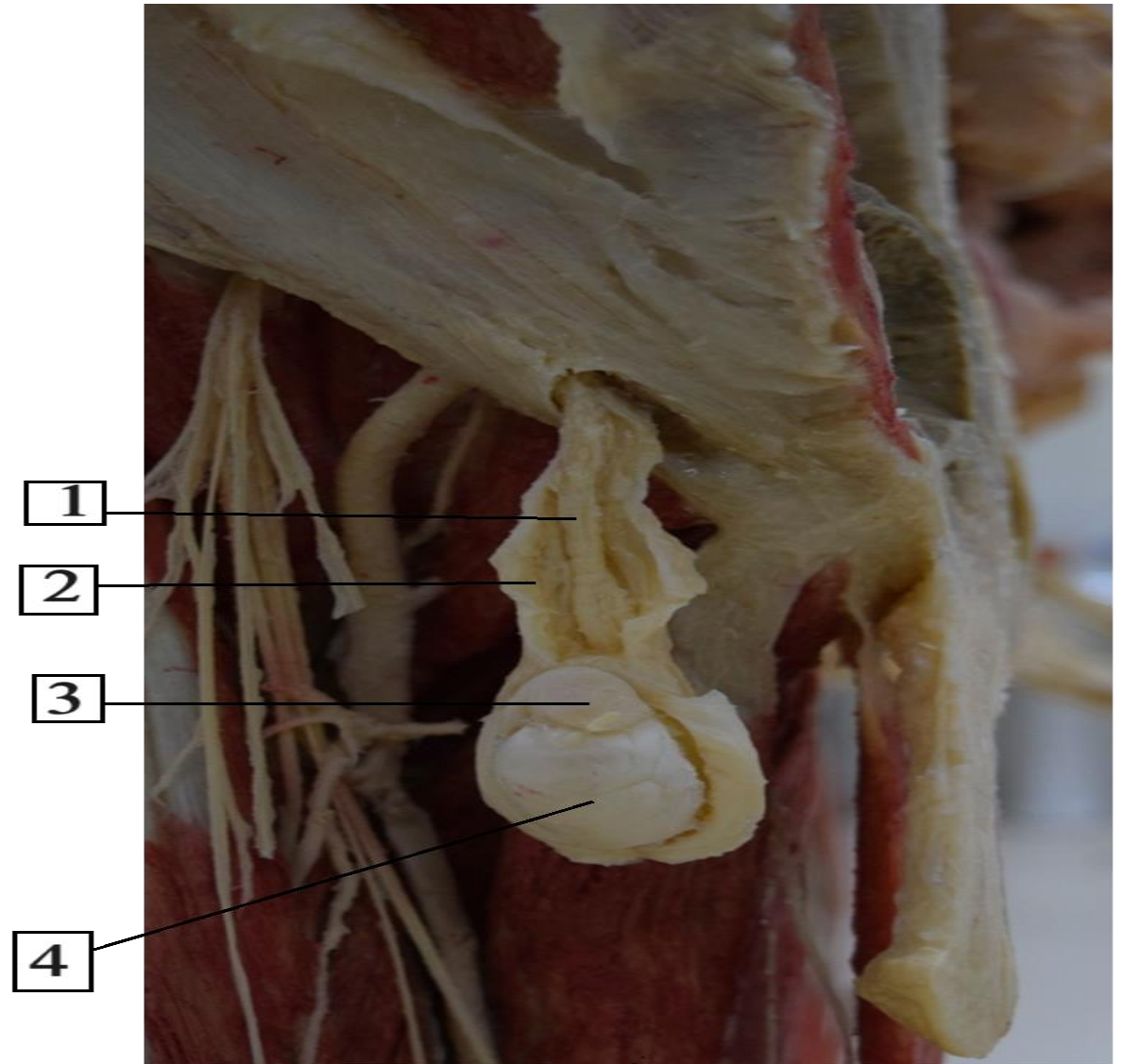


1-Ductus deferens.

2- Internal spermatic fascia.

3- Head of epididymis.

4- Testis.



1- Trigone.

2- Seminal colliculus.

3- Orifice of prostatic utricle.

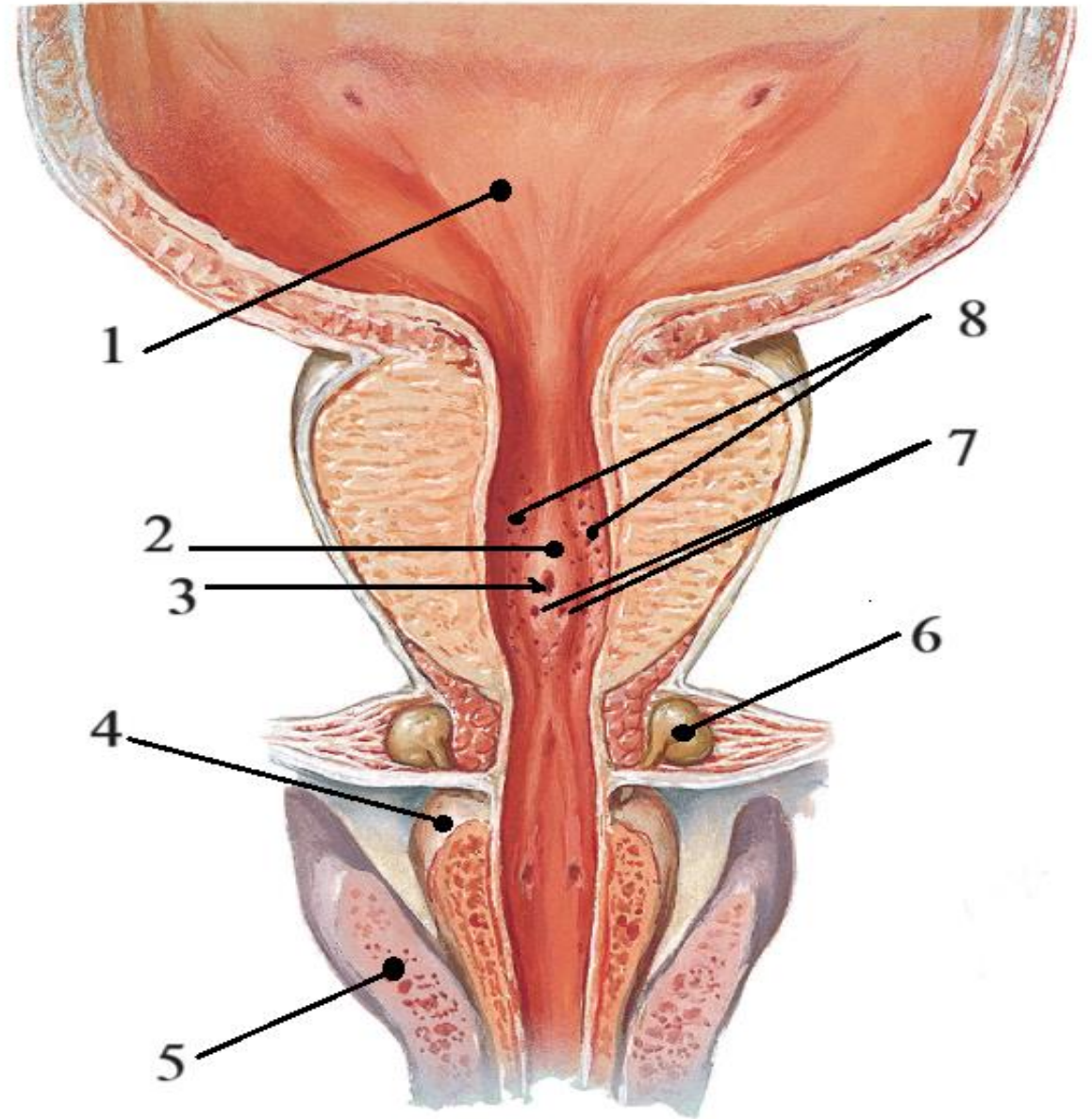
4- Bulb of penis.

5- Right crus of penis.

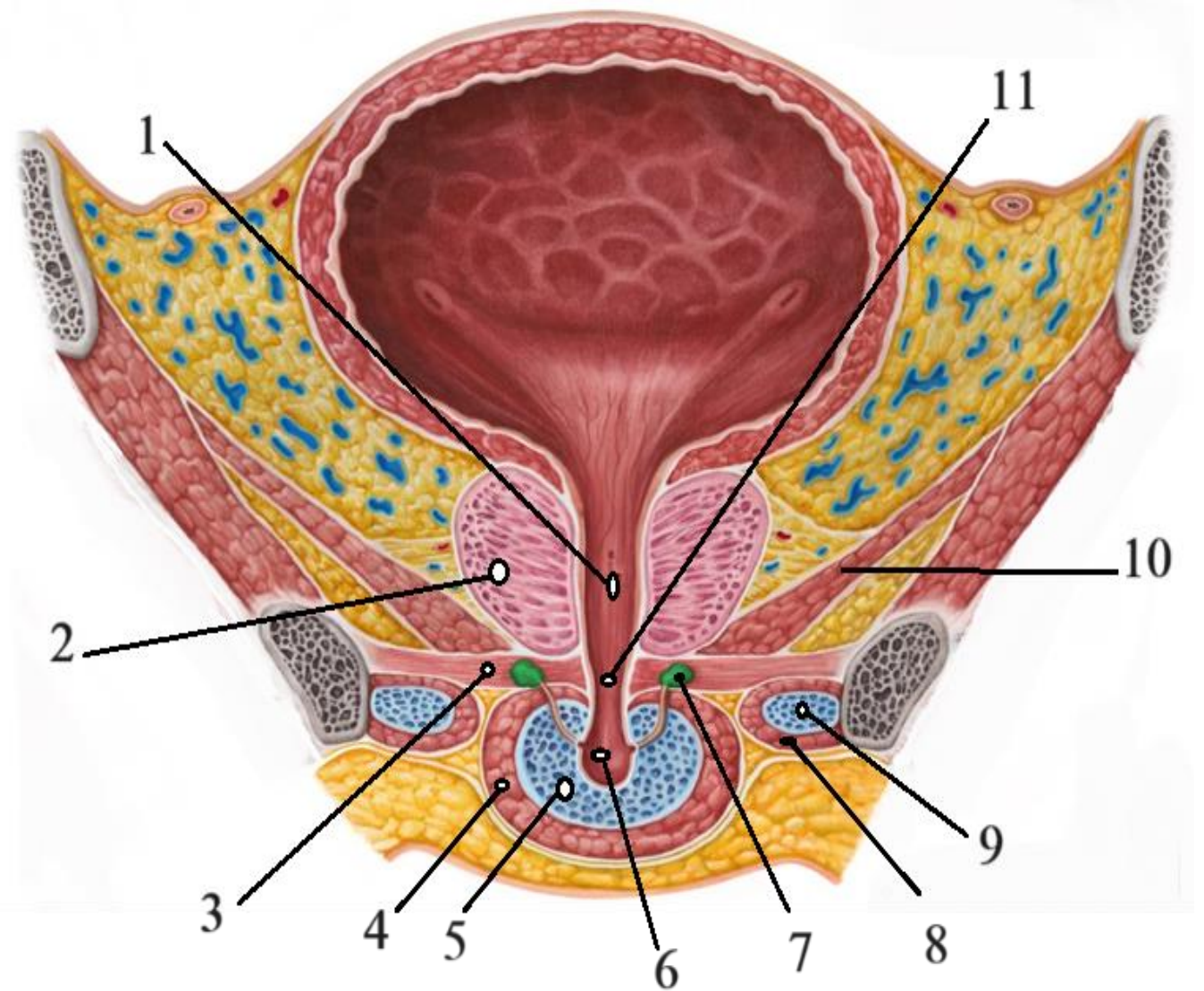
6- Bulbourethral gland.

7- Orifices of two ejaculatory duct.

8- Urethral Sinuses.



- 1- Prostatic urethra.
- 2- Prostate gland.
- 3- Urogenital diaphragm.
- 2- Levator ani.
- 4- Bulbospongiosus muscle.
- 5- Bulb of penis.
- 6- Bulbar part of spongy urethra.
- 7- Bulbourethral gland.
- 8- Ischiocavernosus muscle.
- 9- Right crus of penis.
- 10- Levator ani.
- 11- Membranous urethra.



1- External urethral orifice.

2- Root of penis.

a - Crura of penis.

b- Bulb of penis.

3- Urogenital triangle.

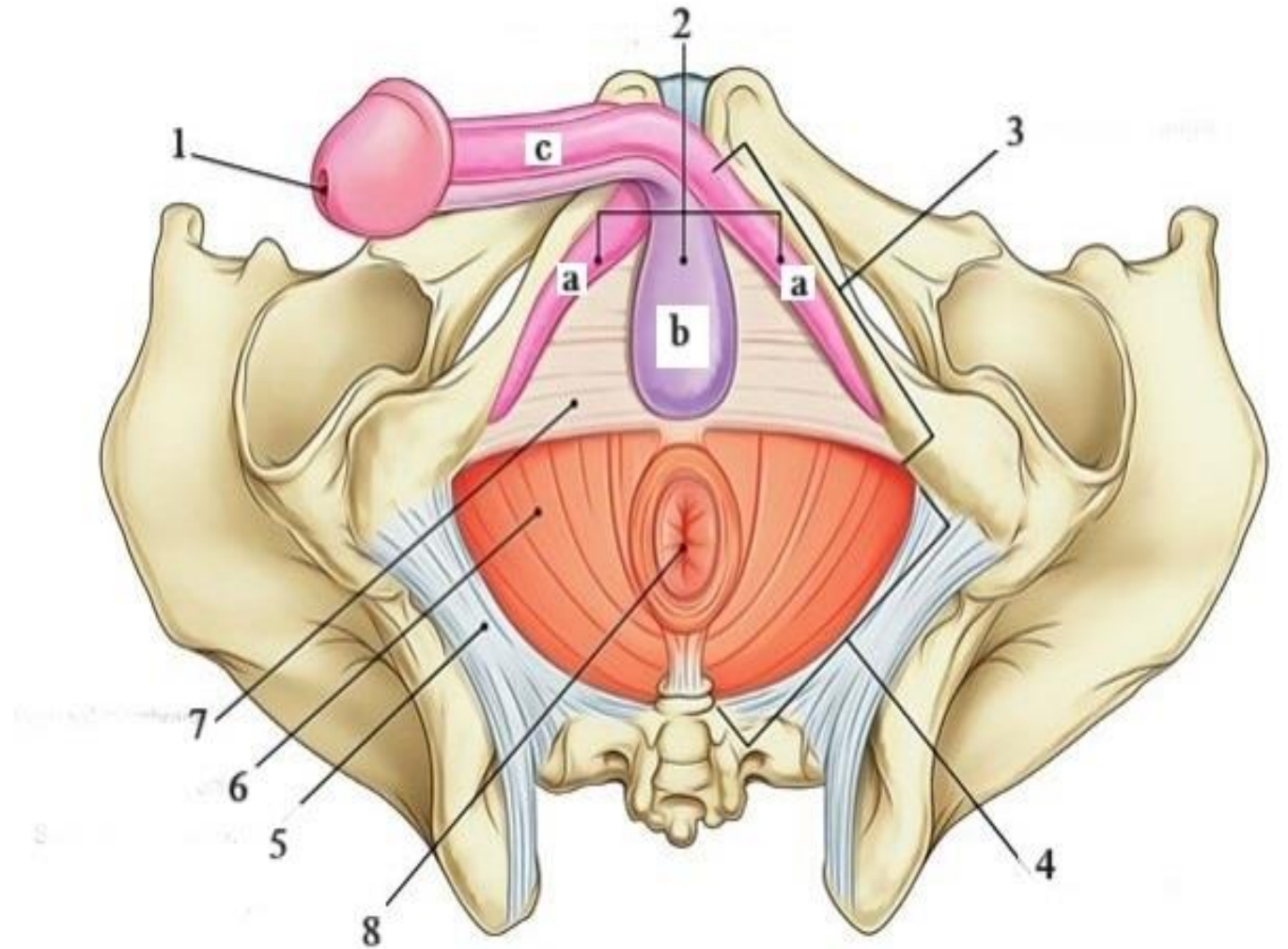
4- Anal triangle.

5- Sacrotuberous ligament.

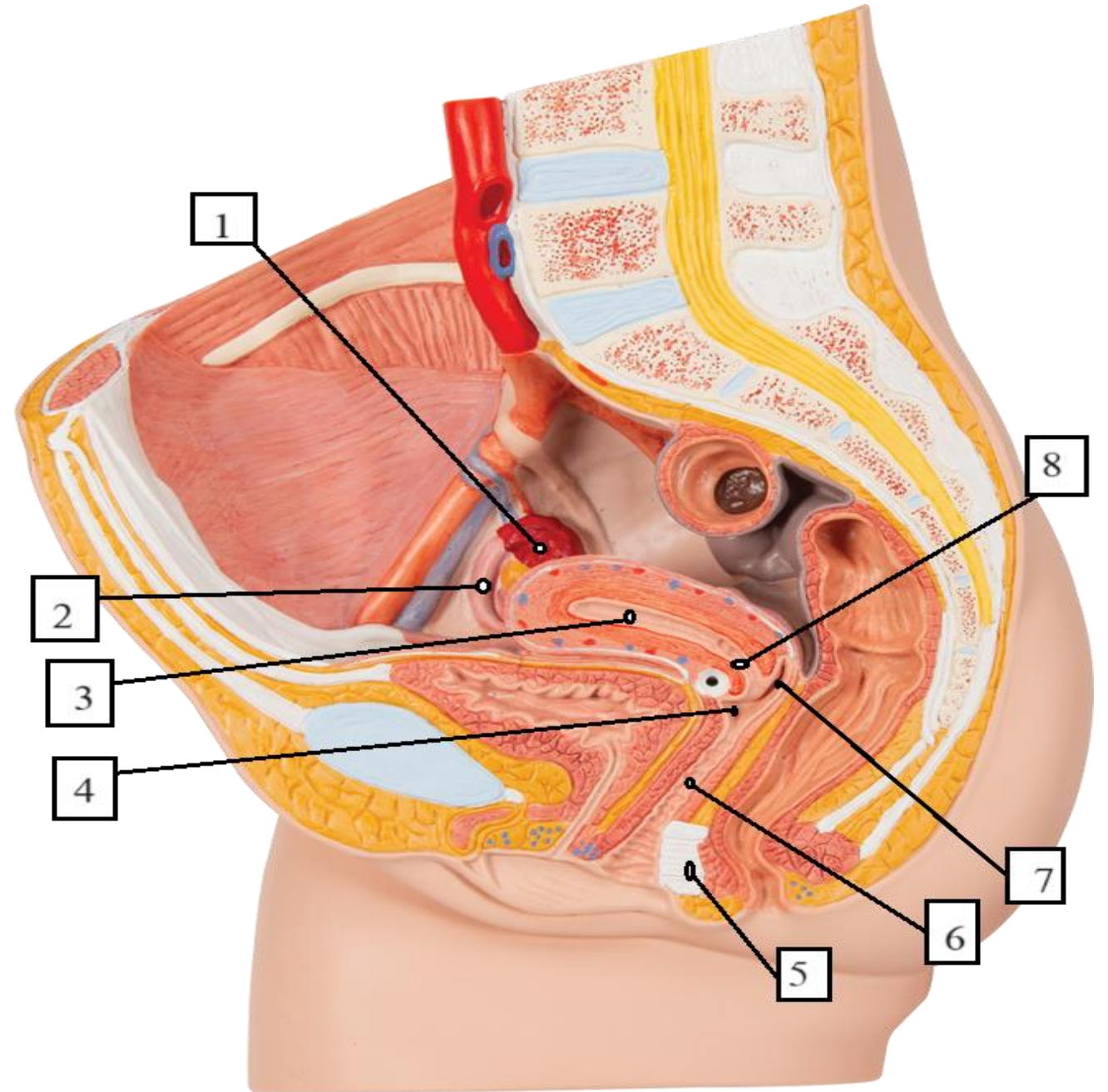
6- Levator ani.

7- Perineal membrane.

8- Anus.



- 1- Right ovary.**
- 2- Right uterine tube.**
- 3- Uterine cavity.**
- 4- Anterior fornix of vagina.**
- 5- Perineal body.**
- 6- Vagina.**
- 7- Posterior fornix of vagina.**
- 8- Cervical canal.**



- 1- Uterine cavity.**
- 2- Round ligament of uterus.**
- 3- Ampulla part of uterine tube.**
- 4- Infundibulum part of uterine tube.**
- 5- Fimbriae.**
- 6- Supravaginal part of cervix.**
- 7- Vaginal part of cervix.**
- 8- Vagina.**



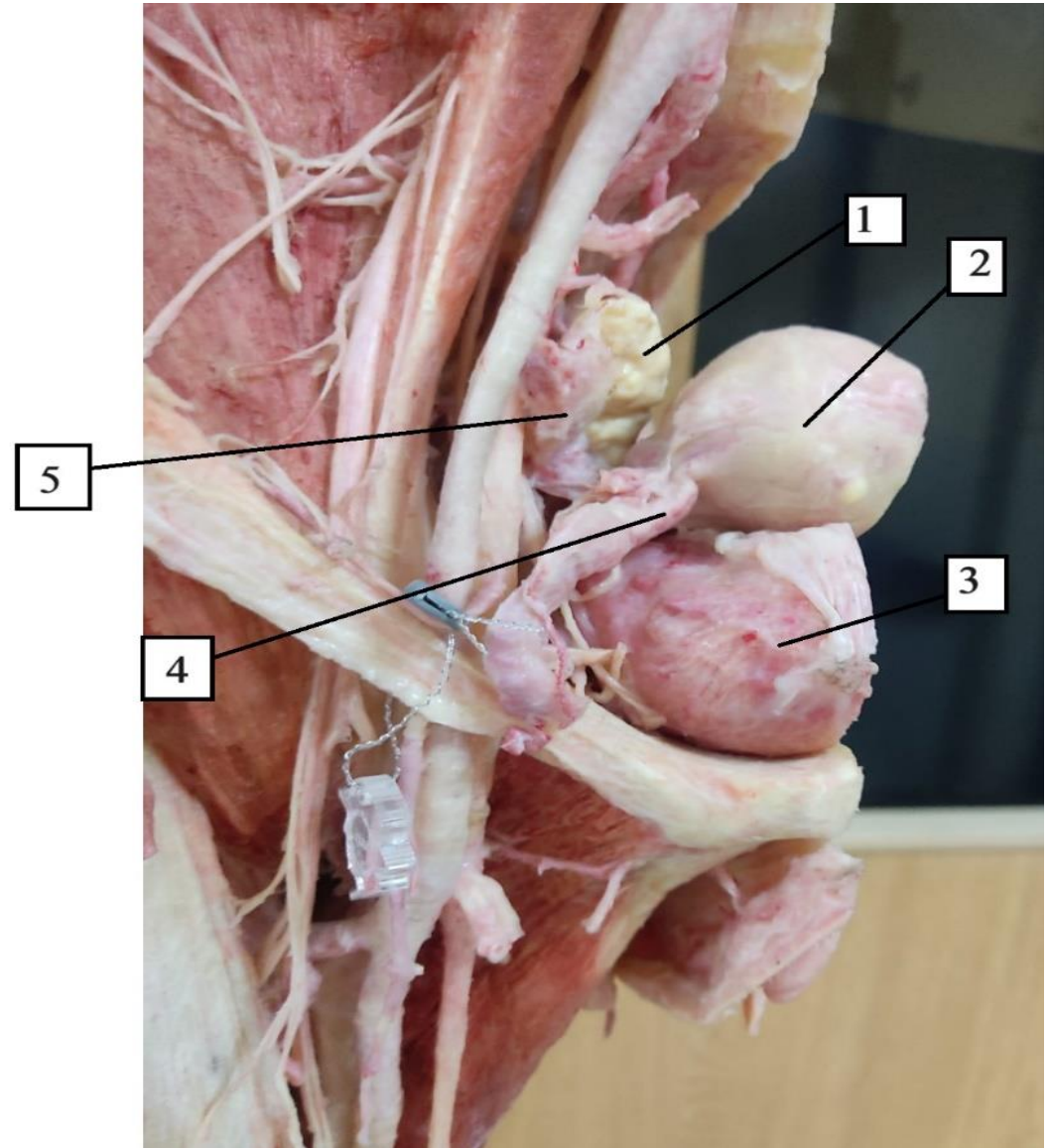
1- Right ovary.

2- Fundus of uterus.

3- Urinary bladder.

4- Round ligament of uterus.

5- Uterine tube.



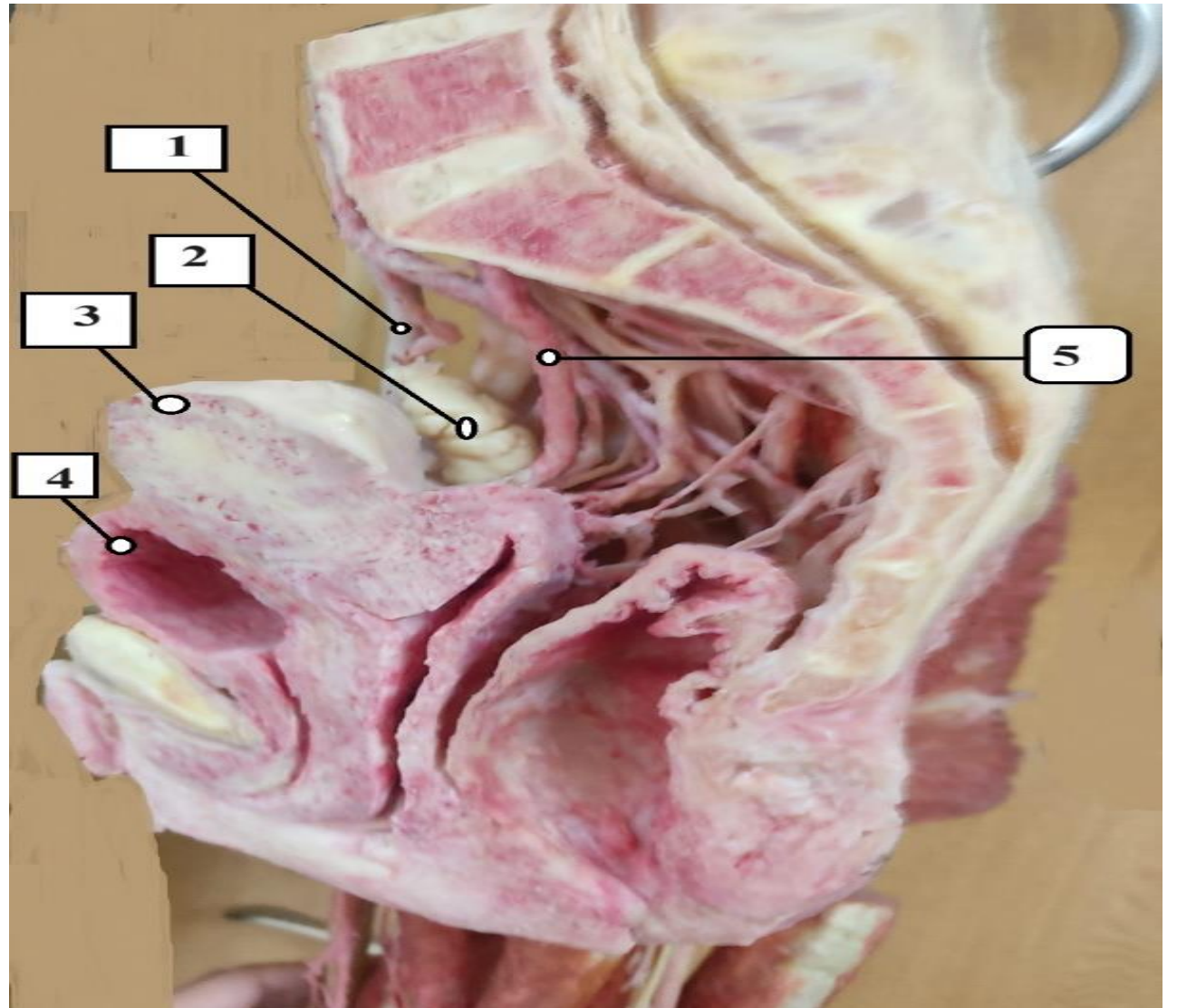
1- External iliac artery.

2- Ovary.

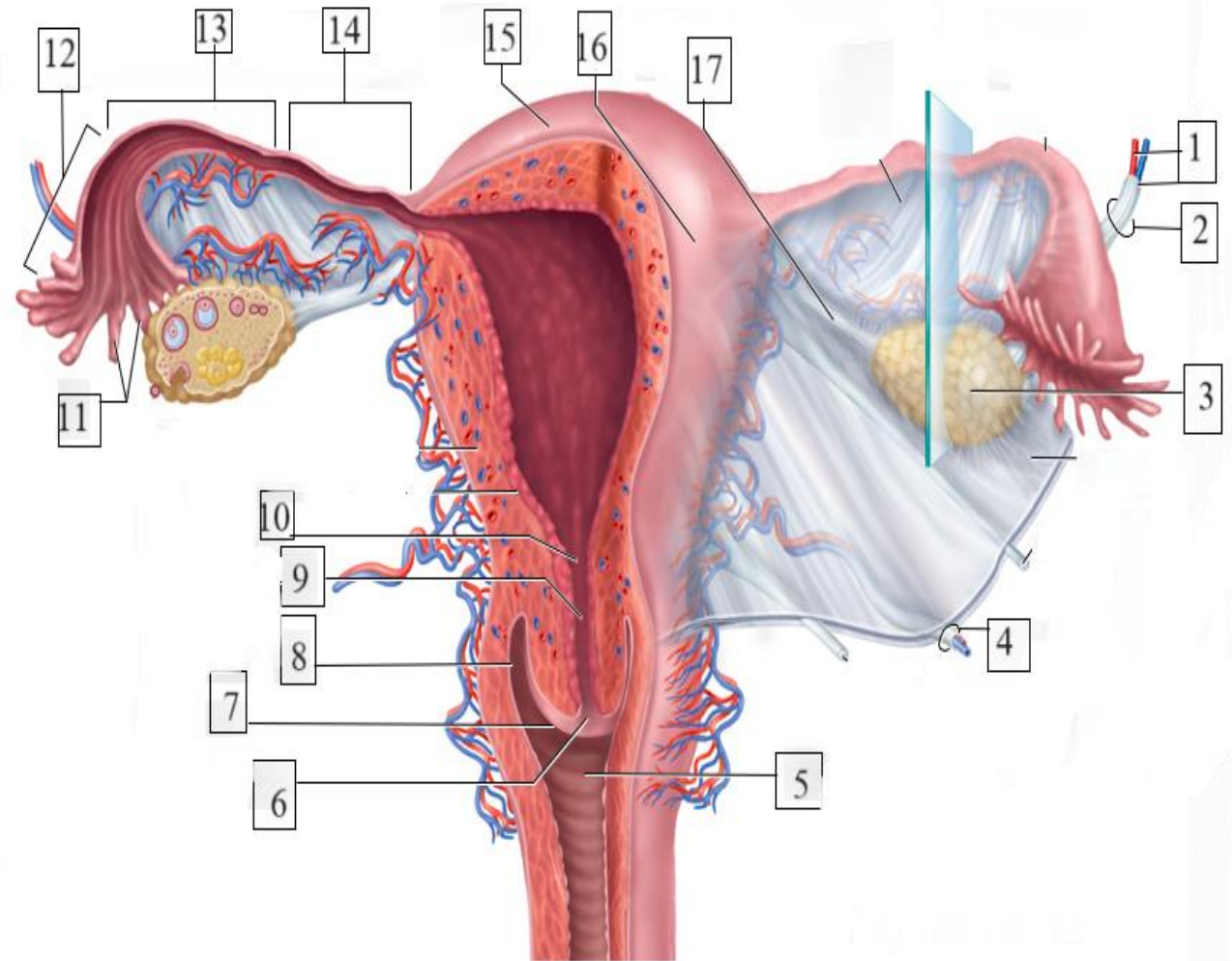
3- Uterus.

4- Urinary bladder.

5- Ureter.



- 1- Ovarian vessels.
- 2- Suspensory ligament of ovary.
- 3- Right ovary.
- 4- Right uterine vessels.
- 5- Vagina.
- 6- External os.
- 7- Cervix.
- 8- lateral vaginal fornix.
- 9- Cervical canal.



10- Internal os.

11- Fimbrie.

12- Infundibulum.

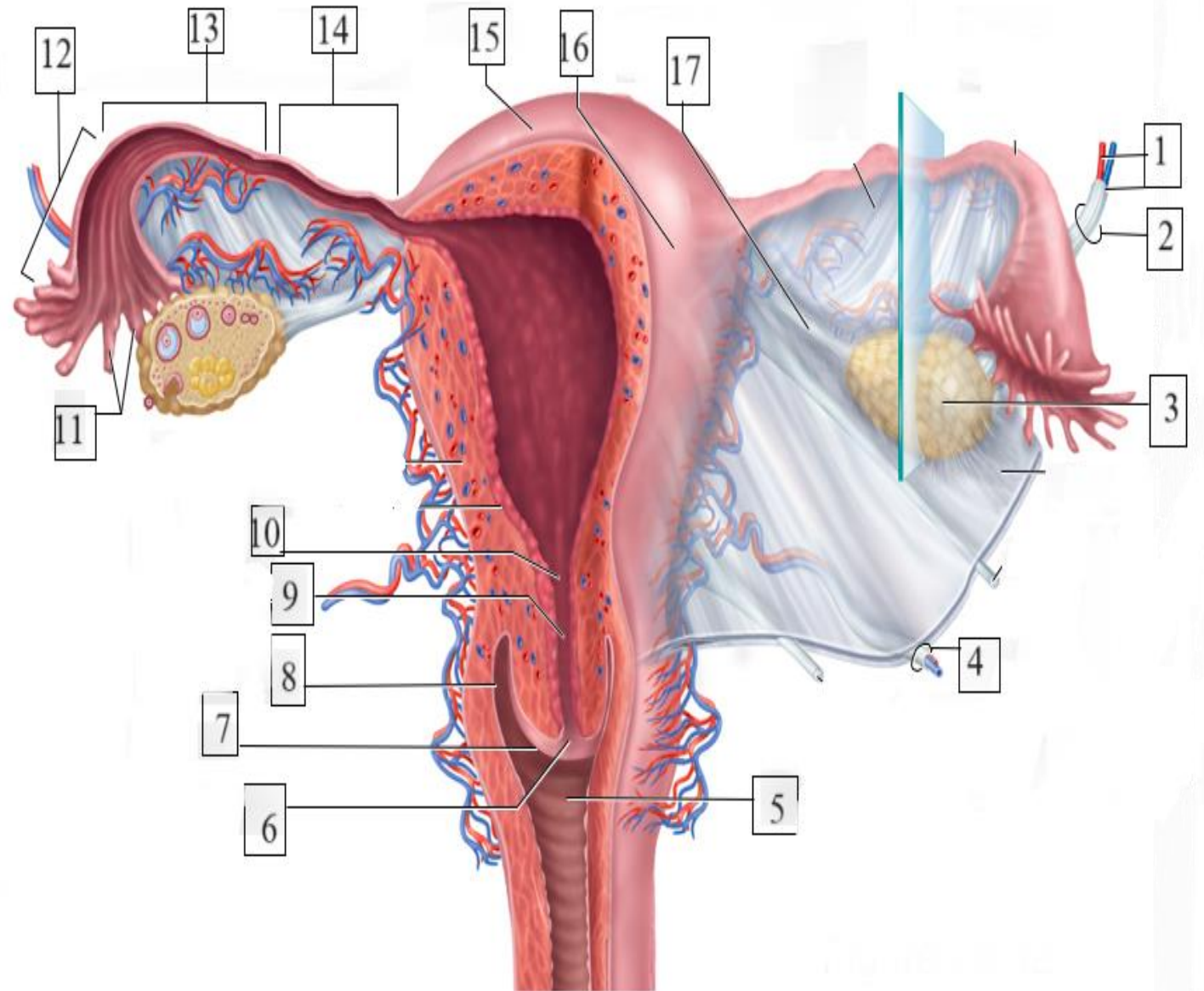
13- Ampulla..

14- Isthmus.

15- Fundus.

16- Body of uterus.

17- Ligament of ovary.



1- Tubal end of ovary.

2- Mesosalpinx.

3- Ovarian ligament.

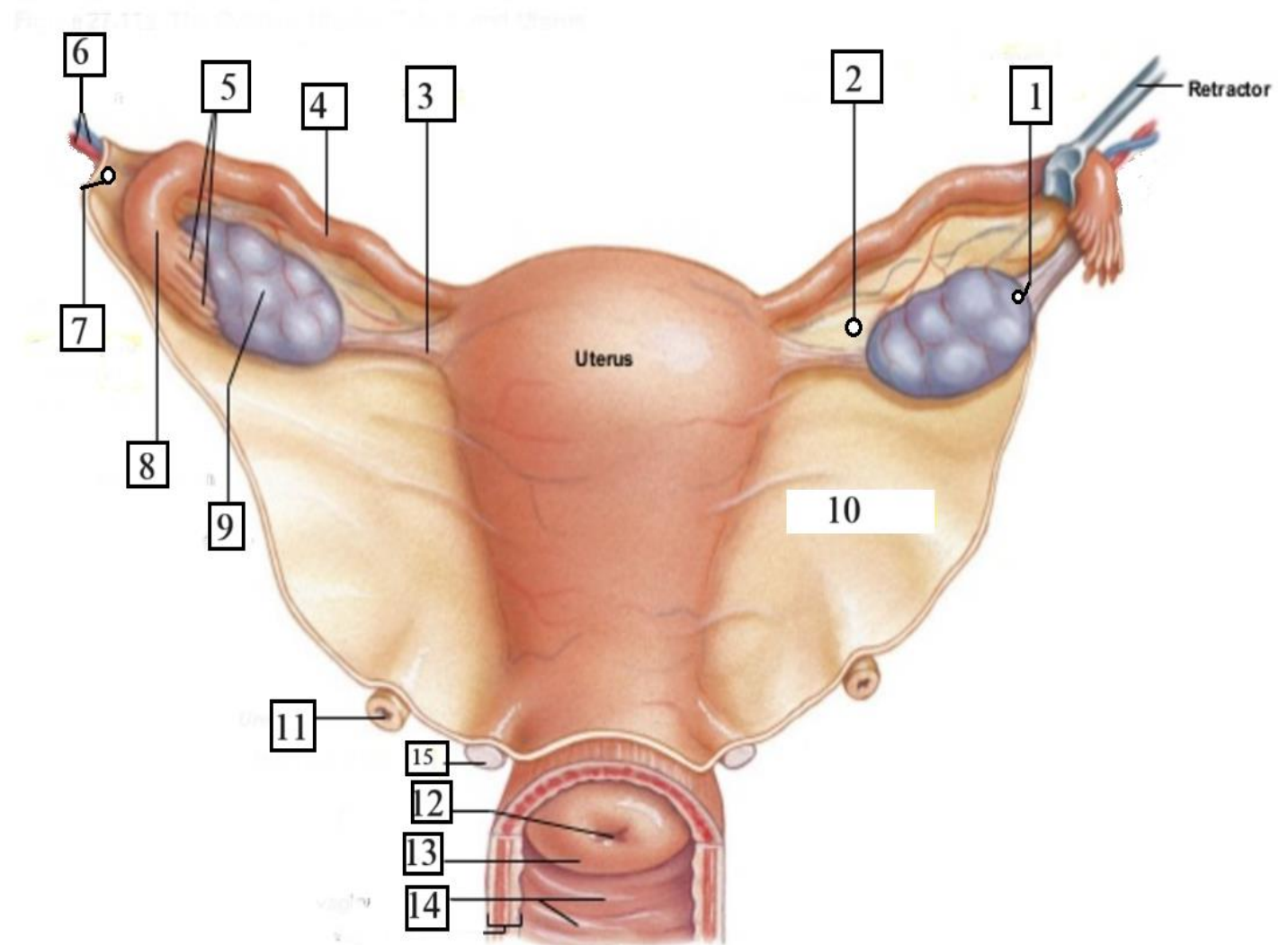
4- Uterine tube.

5- Fimbriae.

6- Ovarian vessels.

7- Suspensory ligament of ovary.

8- Infundibulum.



9- Ovary.

10- Broad ligament.

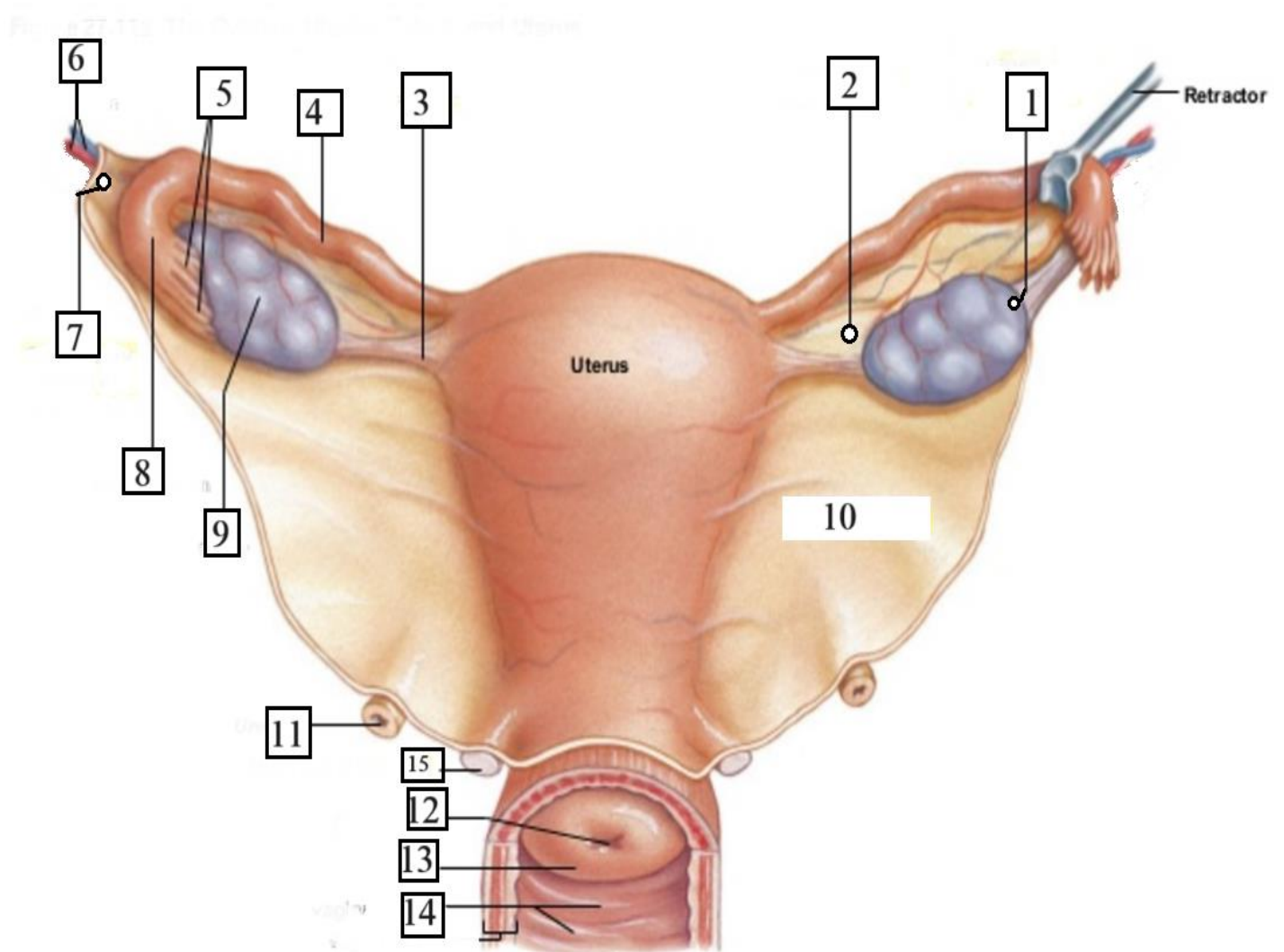
11- Ureter.

12- External os.

13- Vaginal part of cervix.

14- Vaginal rugae.

15- Uterosacral ligament.



1- Urogenital diaphragm.

2- Levator ani muscle.

3- Obturator internus.

4- Superior fascia of urogenital diaphragm.

5- Perineal membrane.

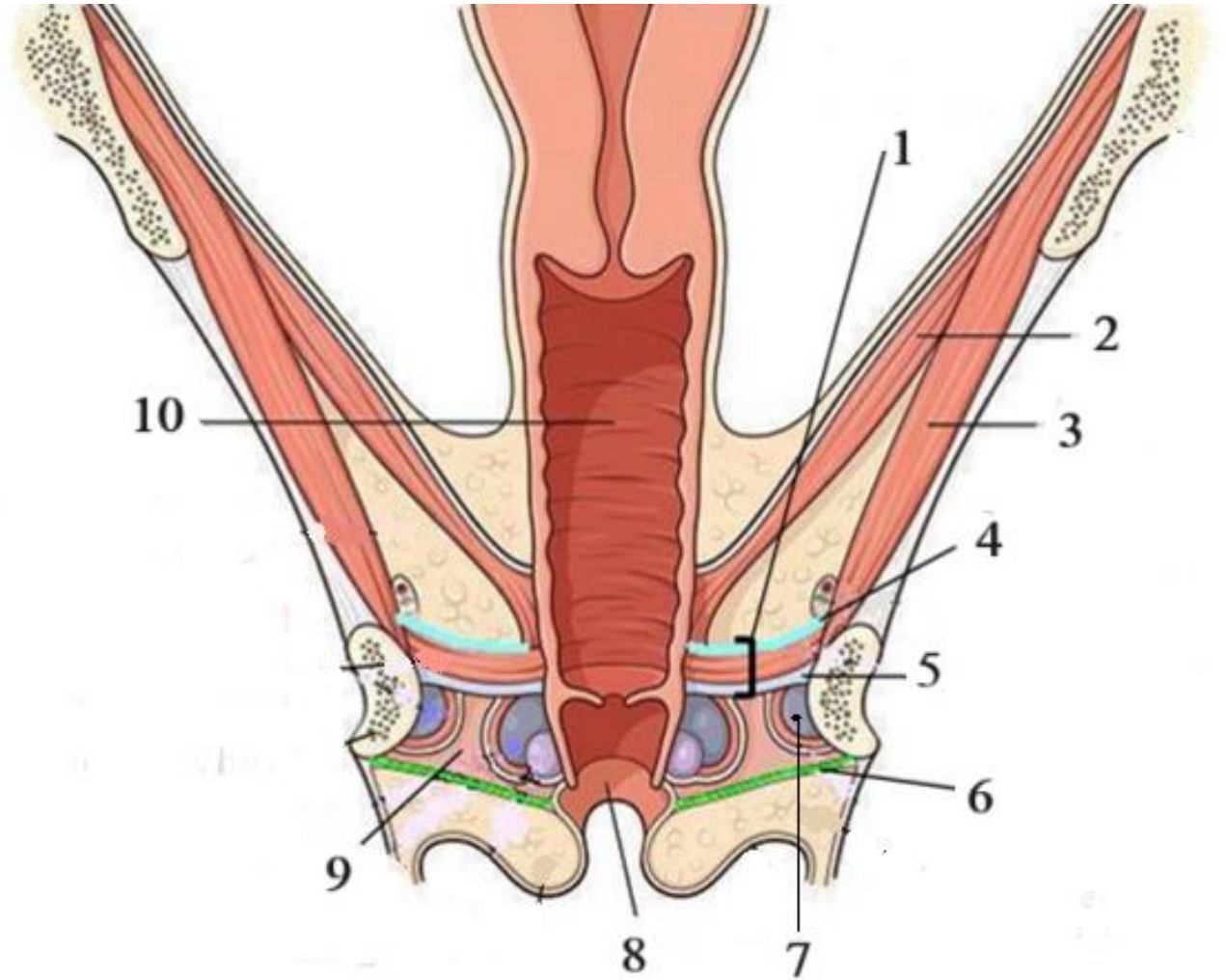
6- Colles' fascia.

7- Crus of clitoris.

8- Vestibule.

9- Superficial perineal pouch.

10- Vagina.



**Thank
you**