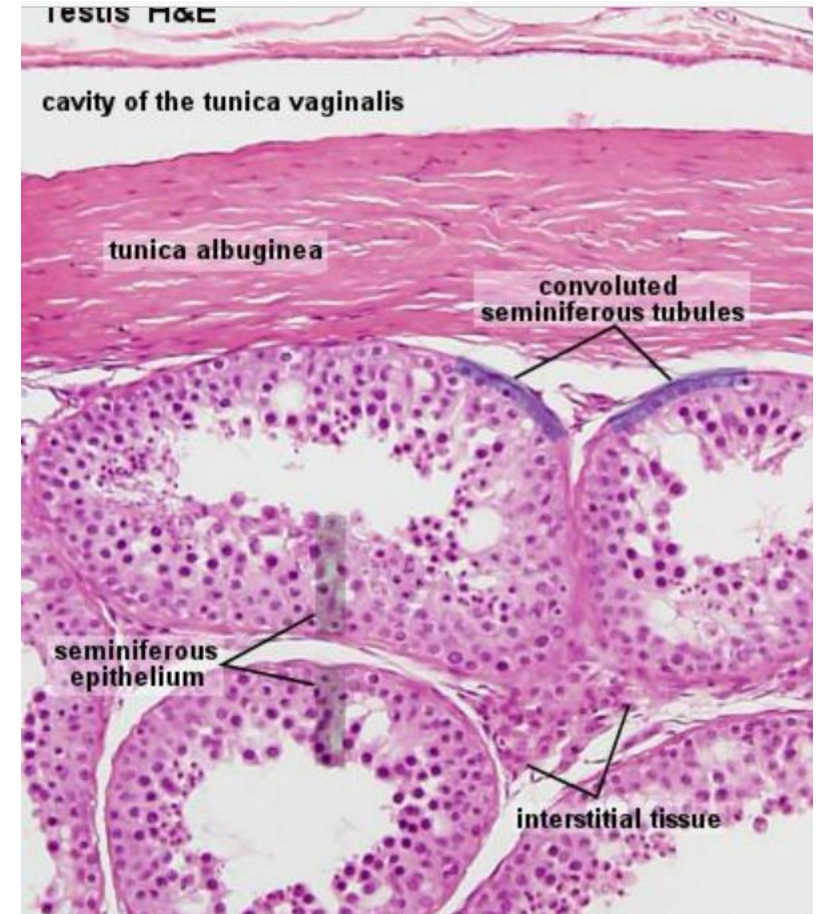


# The practical of Genital system

# Testis

Identify the following

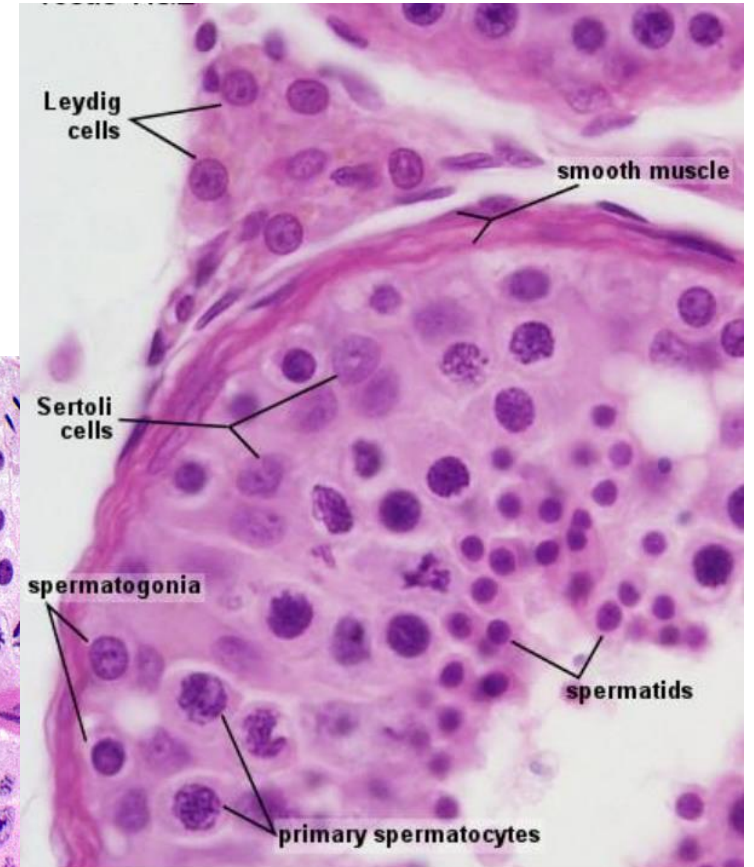
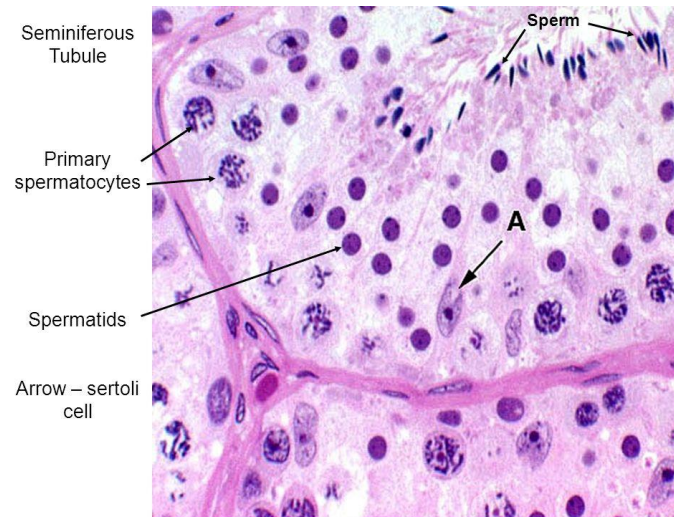
- Tunica vaginalis
- Tunica albuginea
- Seminiferous tubule
- Interstitial tissue



# Testis

Identify the following

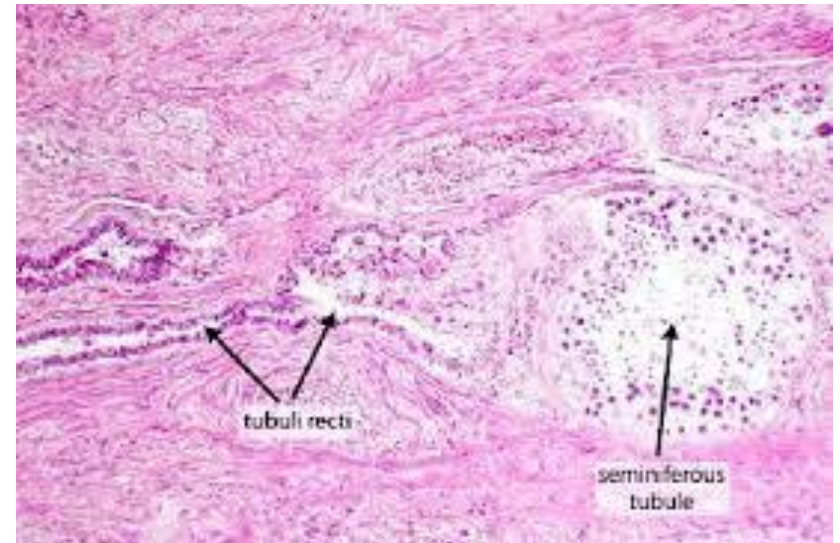
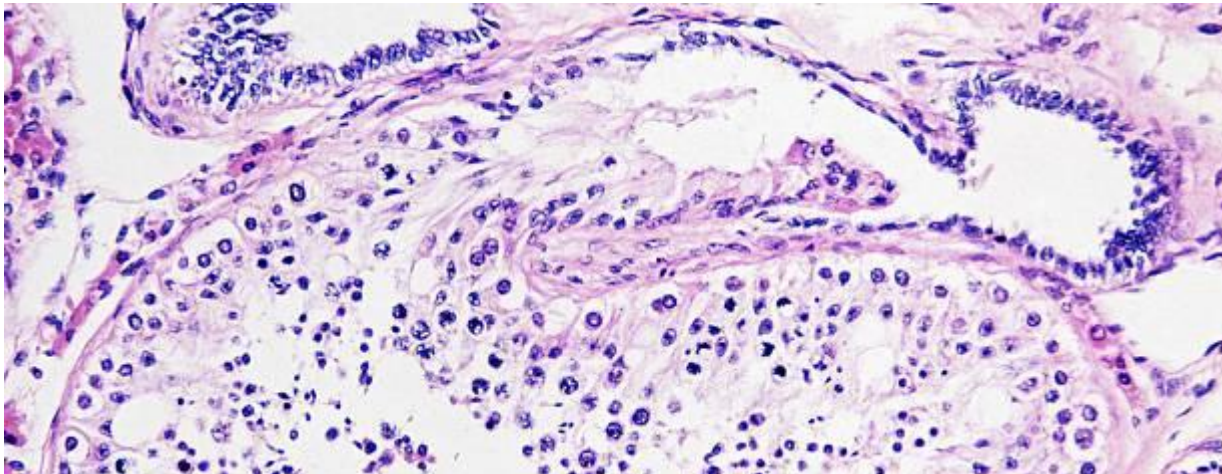
- Myoid cells
- Spermatogonia
- Primary spermatocyte
- Spermatid
- Spermatozoa
- Sertoli cells
- Interstitial cells of Lyedig





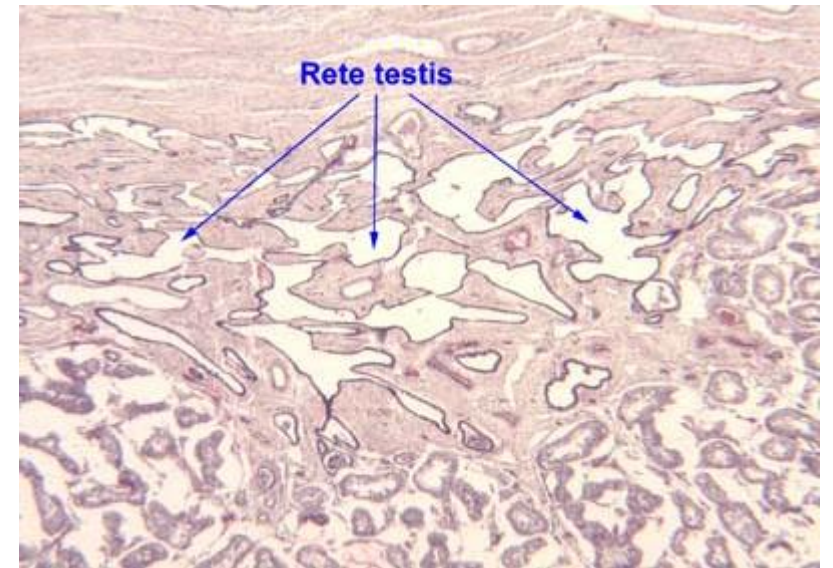
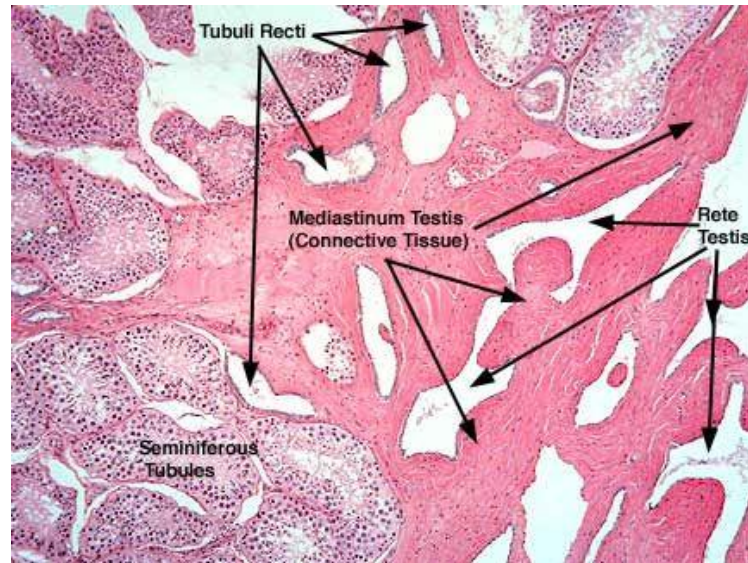
# Tubuli Recti

- Notice the seminiferous tubule ends with tubuli recti
- Appreciate the type of epithelium lining straight tubules



# Rete Testis

- Notice the interconnected channels with irregular lumens
- They are found in dense connective tissue (**Mediastinum Testis**)

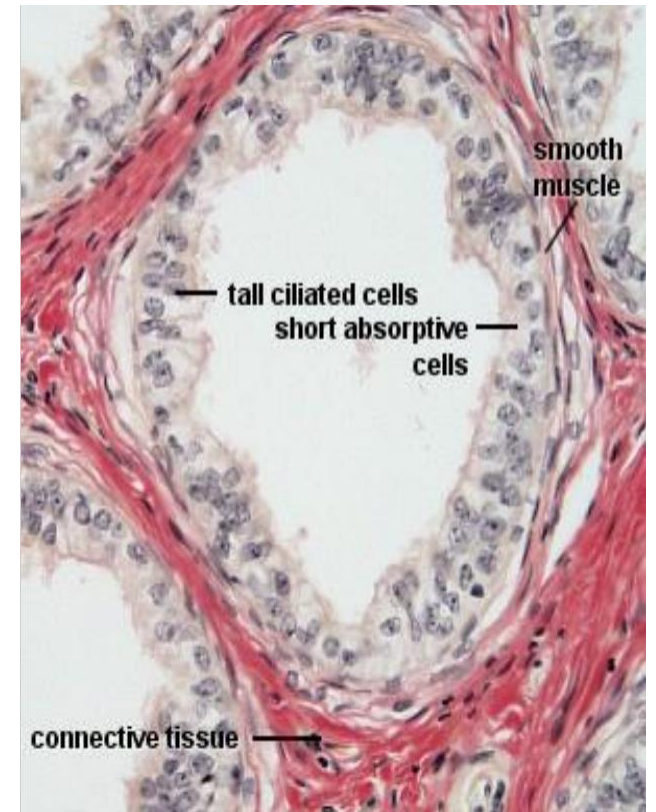
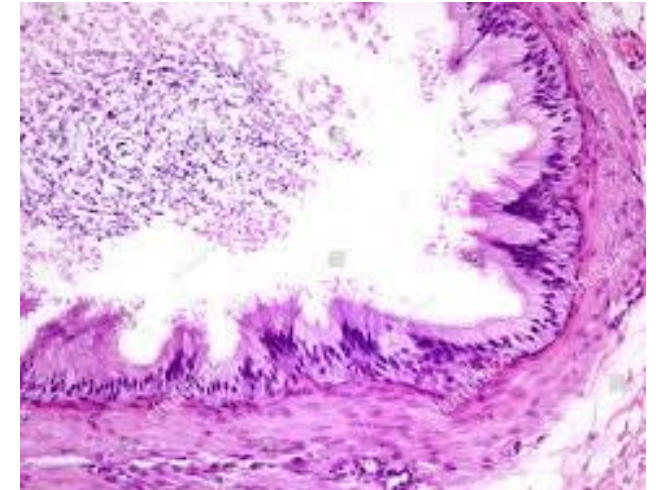
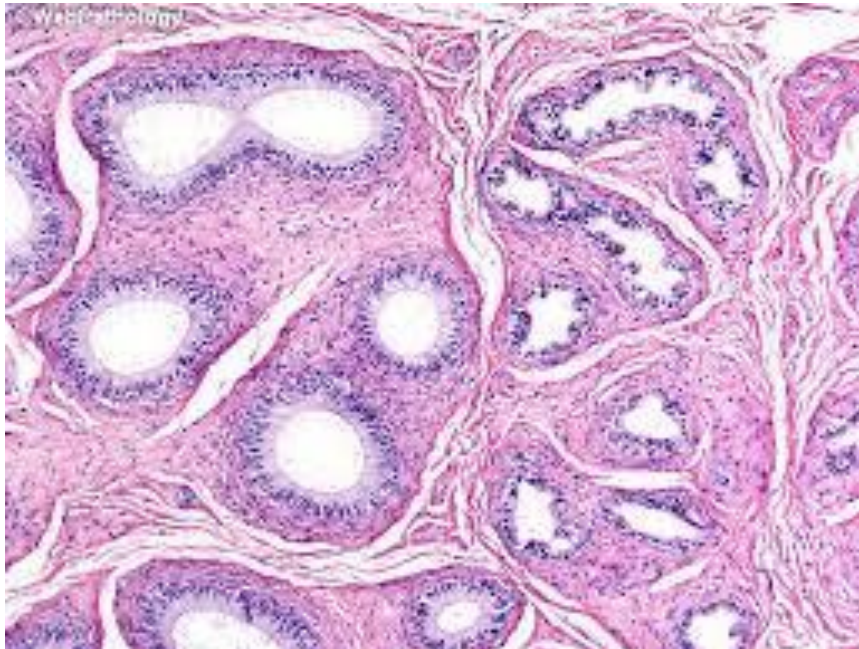




# Efferent Tubules

Appreciate

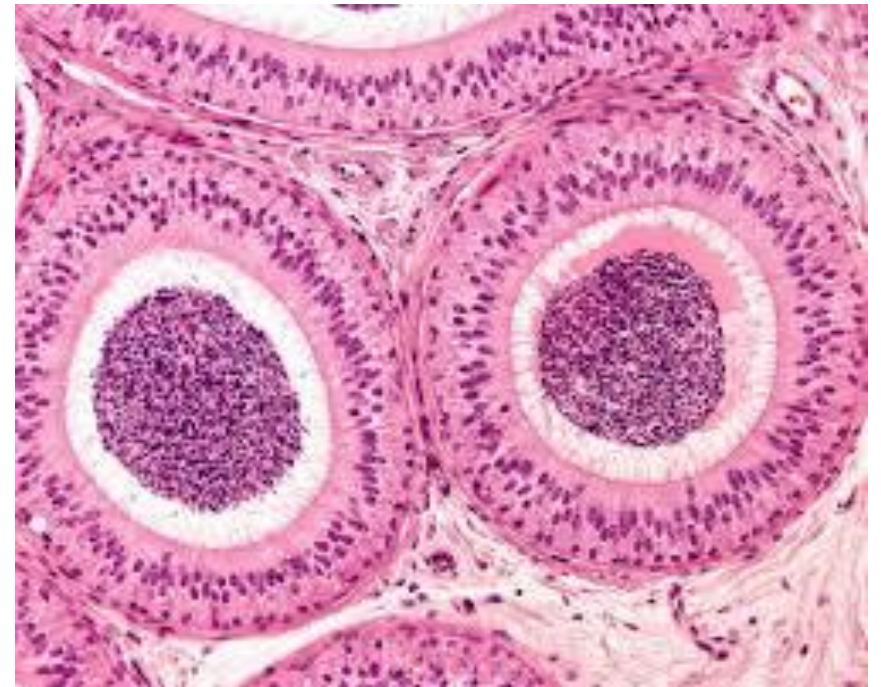
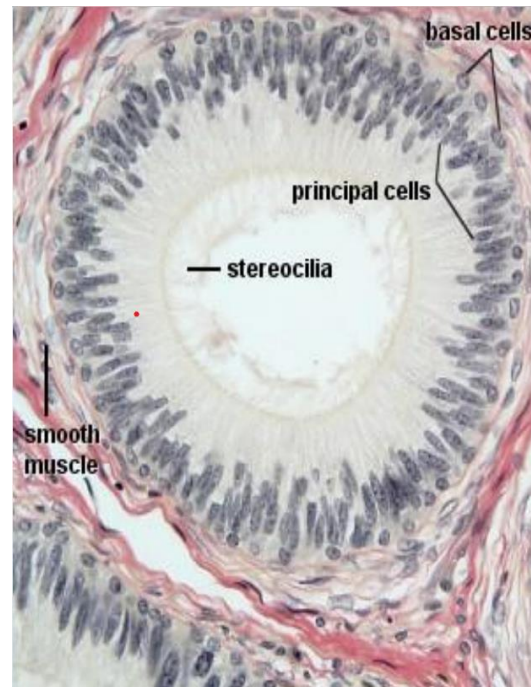
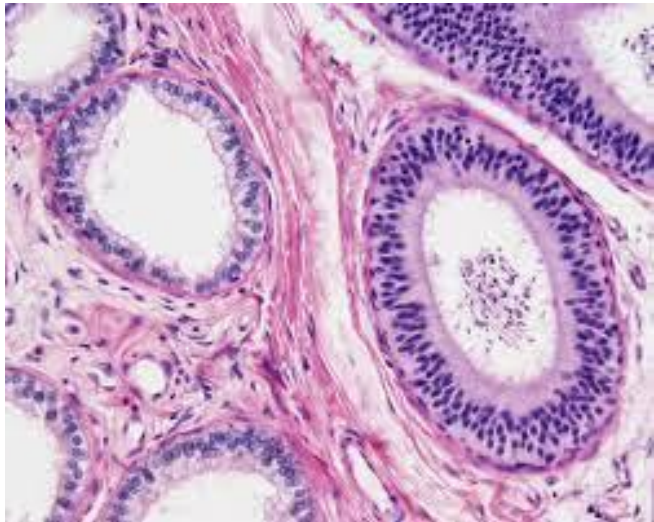
- Type of epithelium and cells
- Irregular epithelium



# Epididymis

Appreciate the following:

- Type of epithelium
- Shape of lumen
- Stereocilia
- Smooth muscles

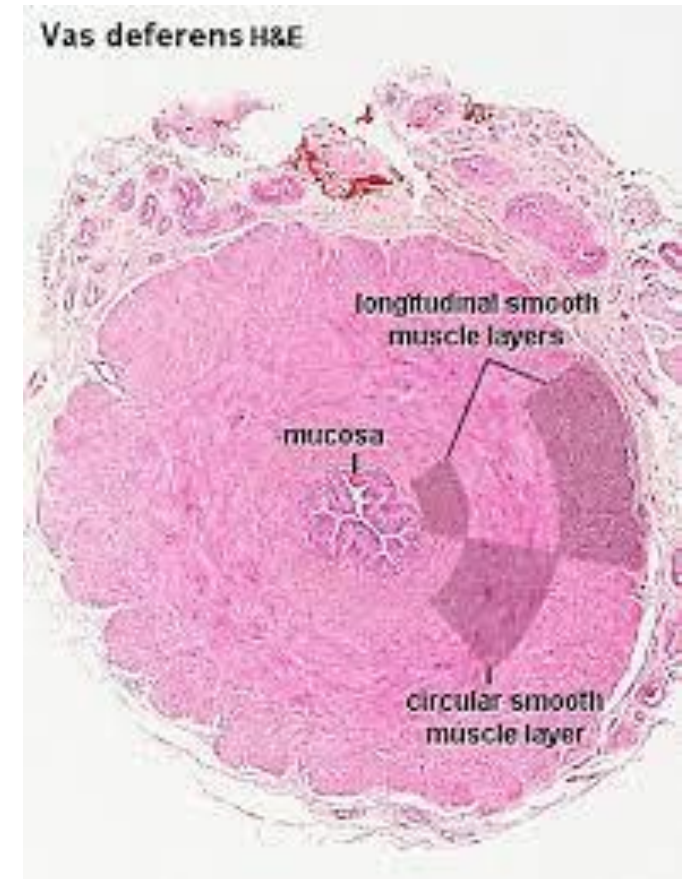
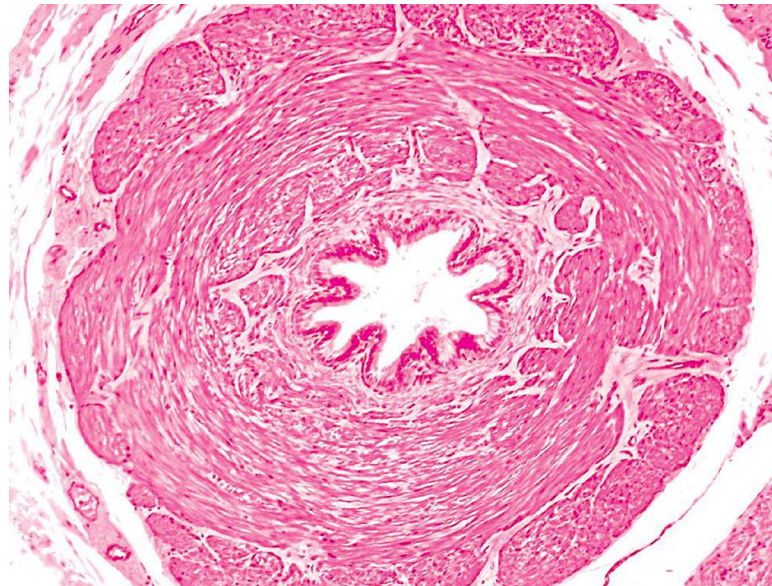




# Vas deferens

## Appreciate

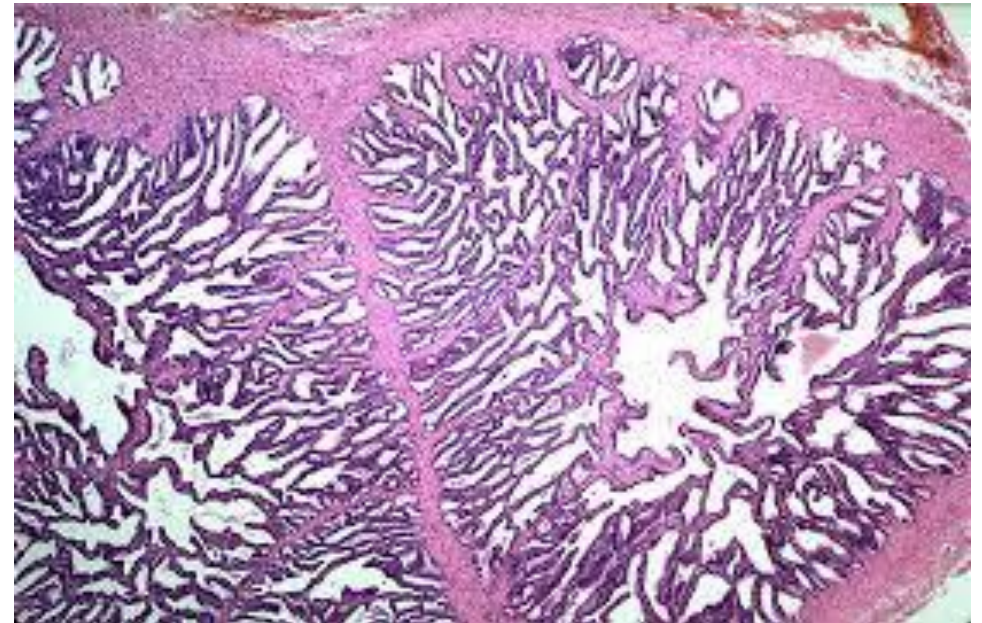
- Layers
- wall thickness
- Three muscle layers
- Epithelial lining





# Seminal Vesicle

- Surrounded by dense connective tissue capsule
- Notice excessive epithelial foldings
- Distinguish two smooth muscle layers in muscularis

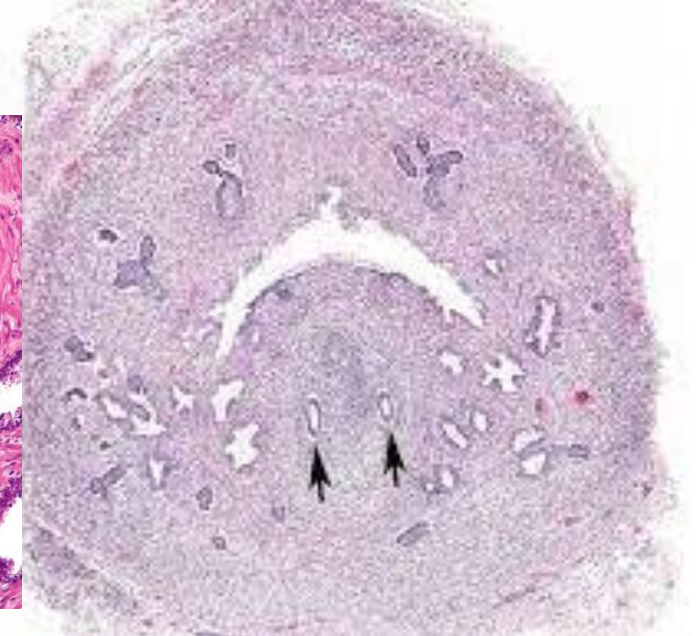
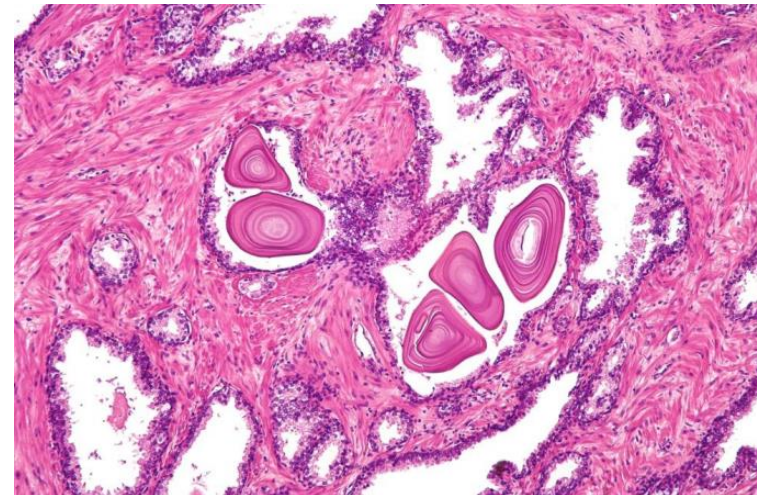
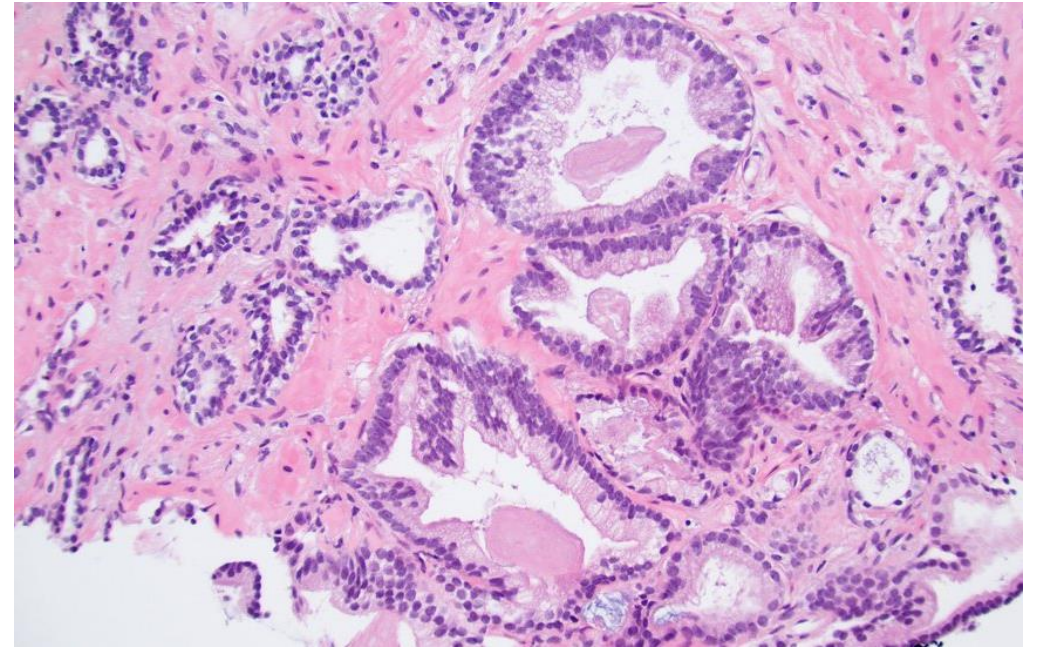




# The Prostate Gland

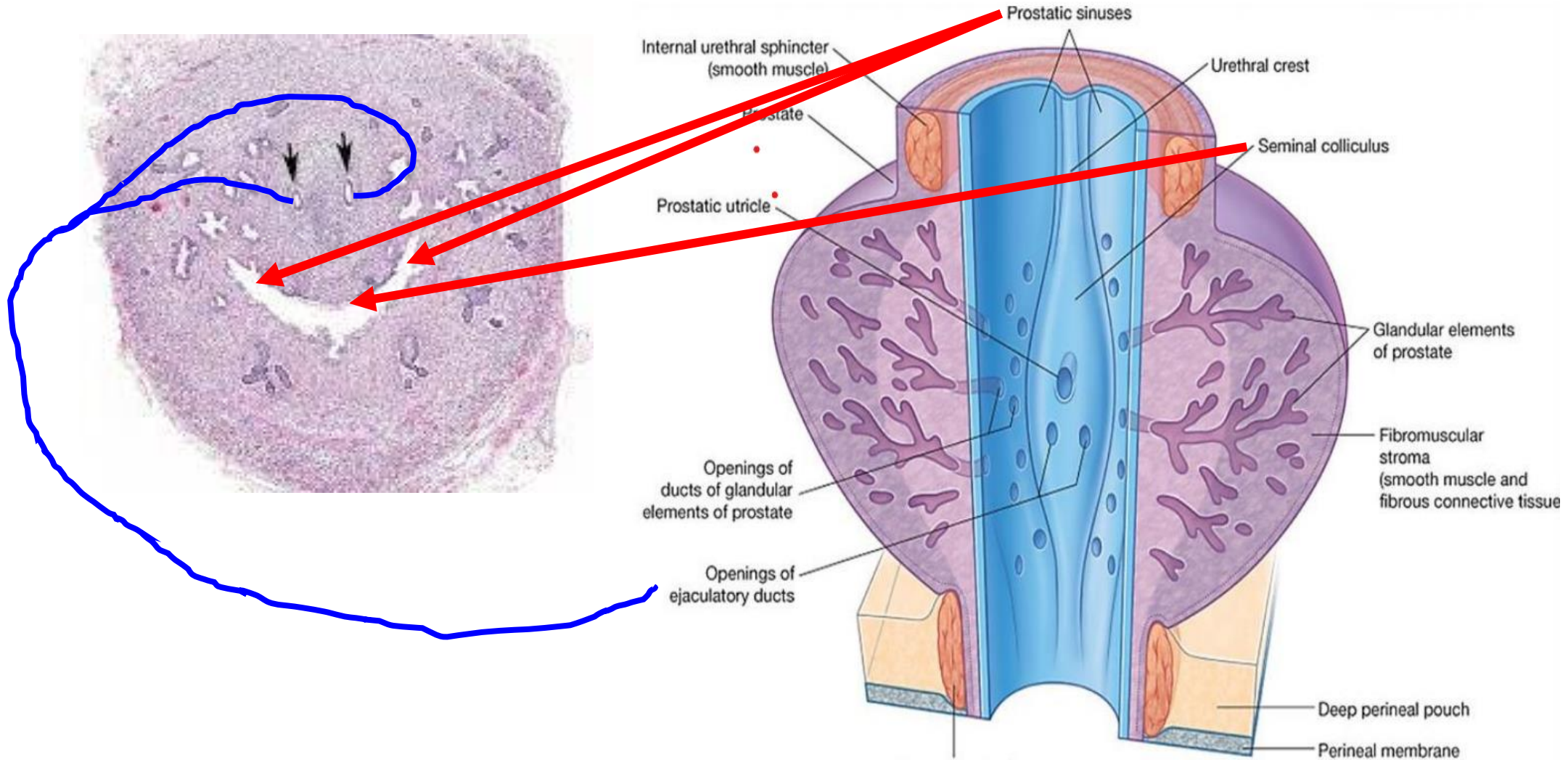
## Notice

- The tubuloalveolar glands
- Fibromuscular tissue
- Prostatic urethra
- Ejaculatory ducts (black arrows)
- The epithelial lining
- Corpora amylacia





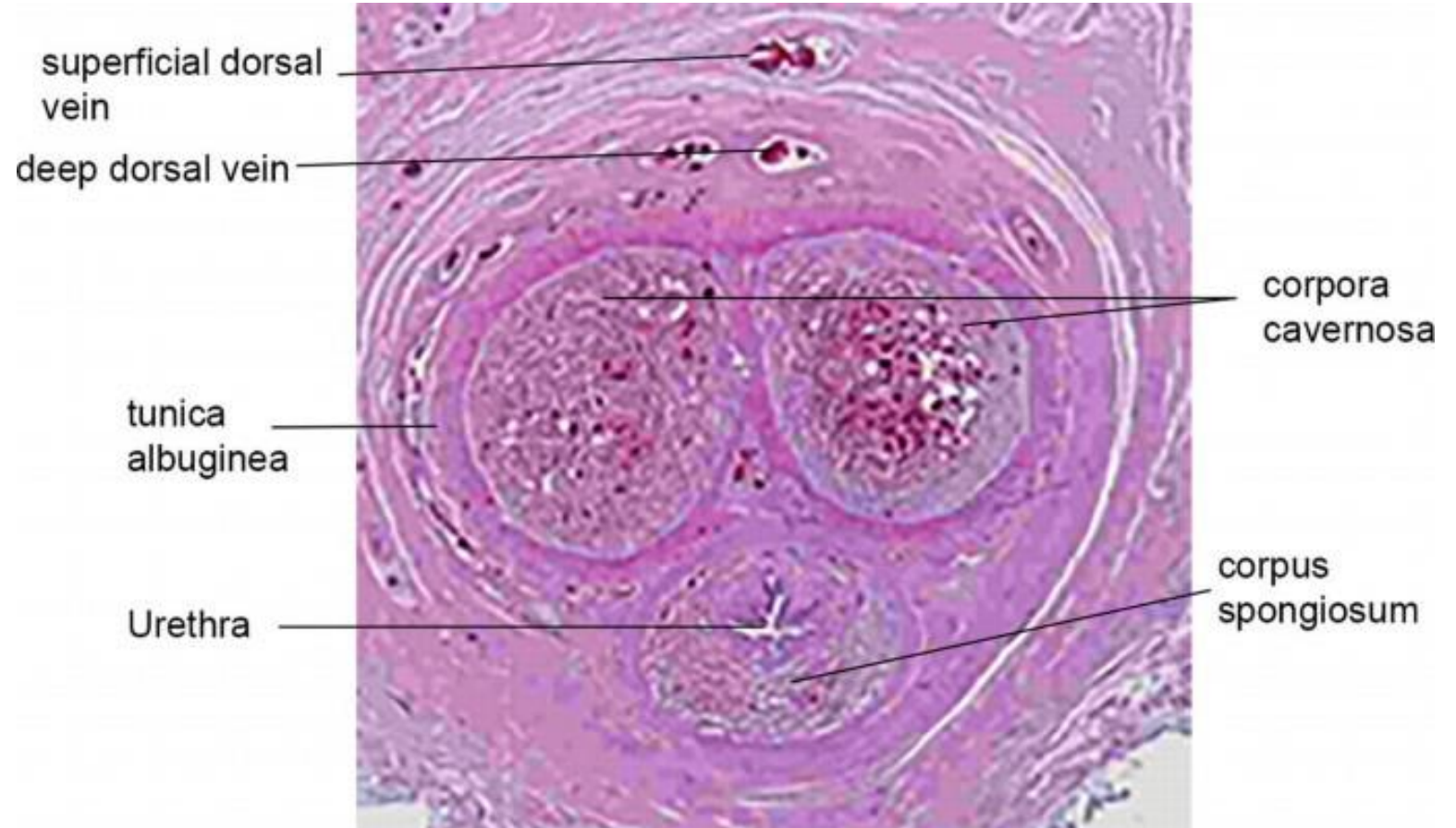
# The Prostate Gland



# Penis

## Notice:

- Tunica albuginea
- Corpora cavernosa
- Corpus spongiosum
- Penile urethra

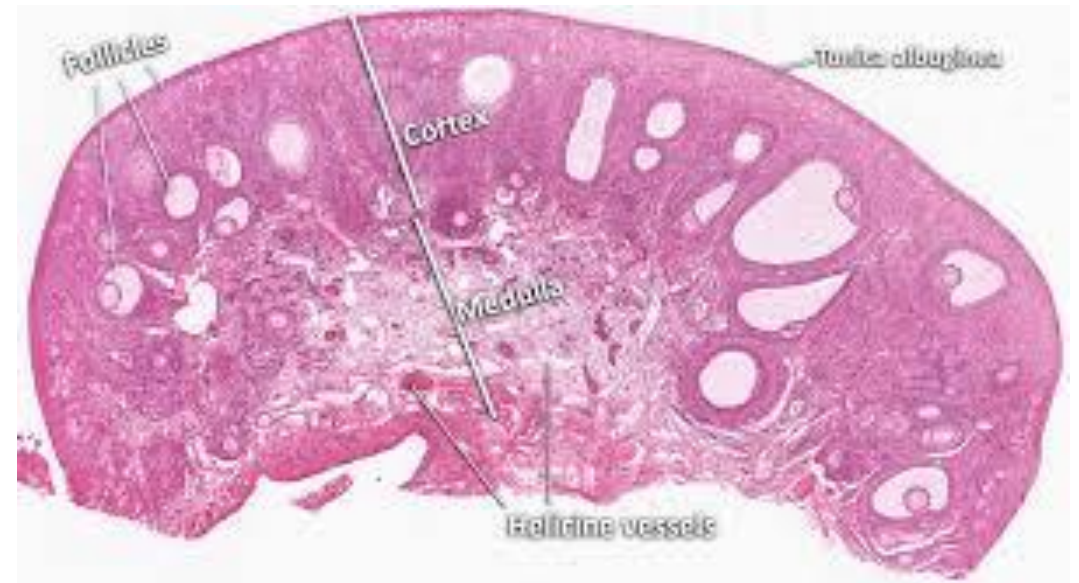




# The Ovary

Consists of:

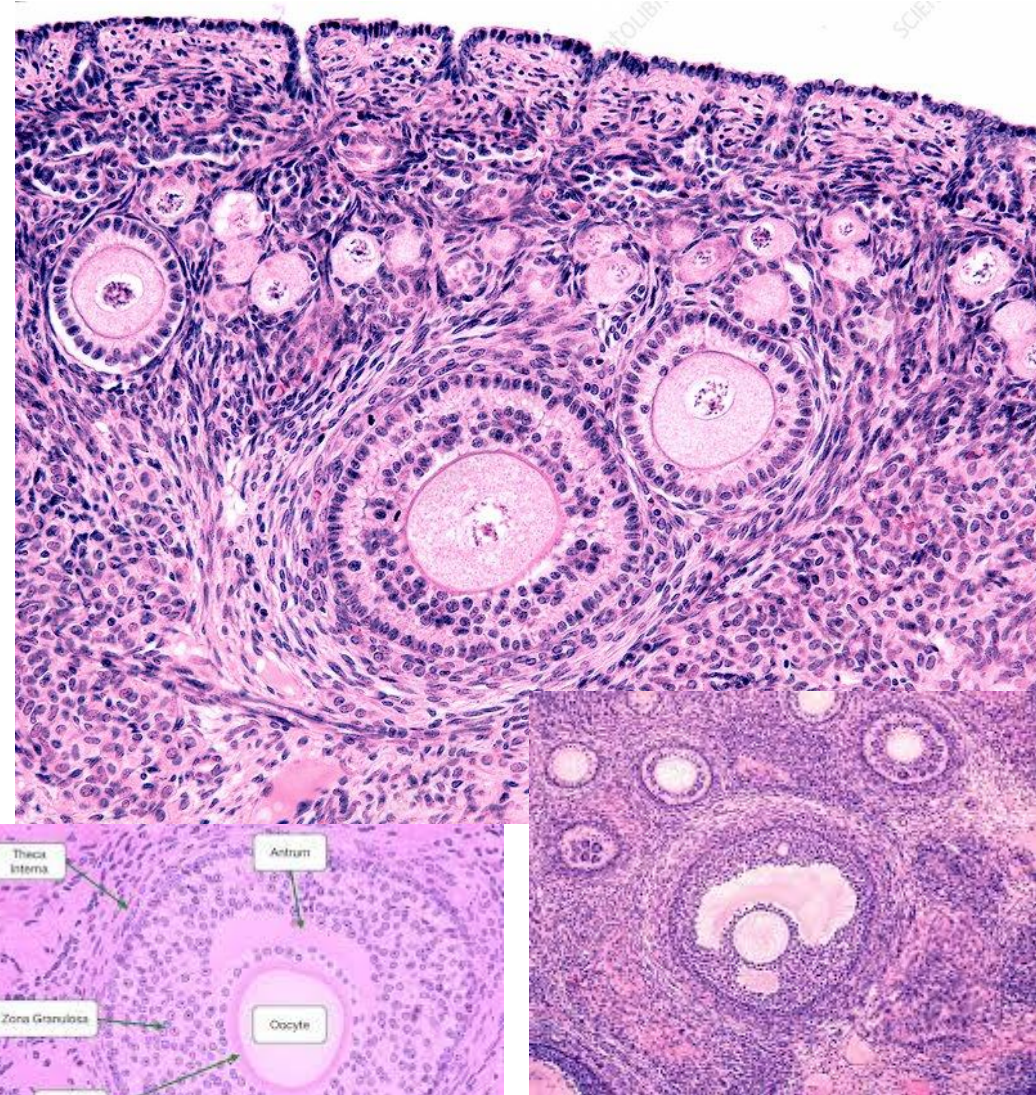
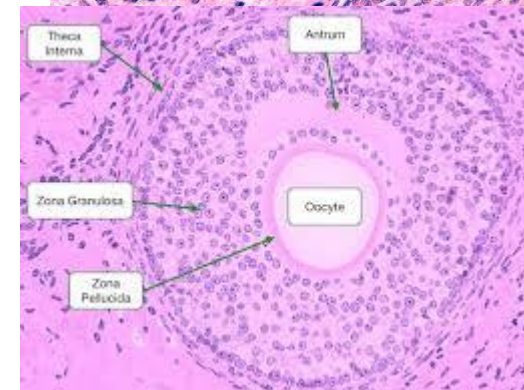
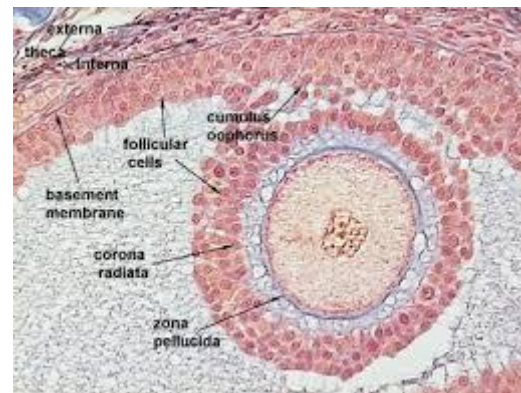
- Cortex filled with follicles
- Medulla filled with connective tissue
- Covered by germinal epithelium
- Tunica albuginea



# The cortex of ovary

## Notice

- Germinal epithelium
- Tunica albuginea
- Primordial follicles
- Primary follicle (unilamellar)
- Primary follicle (multilamellar)
- Secondary follicle (antral)



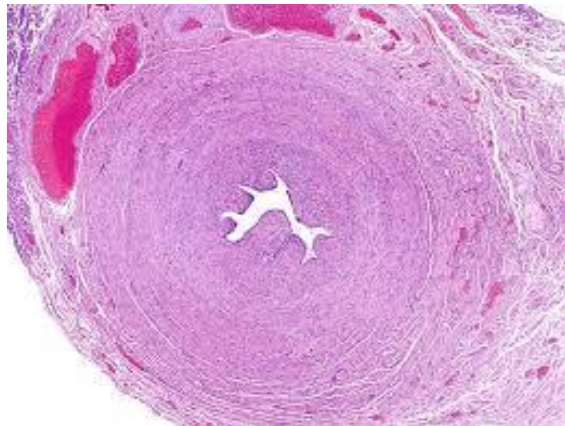


# Uterine Tube

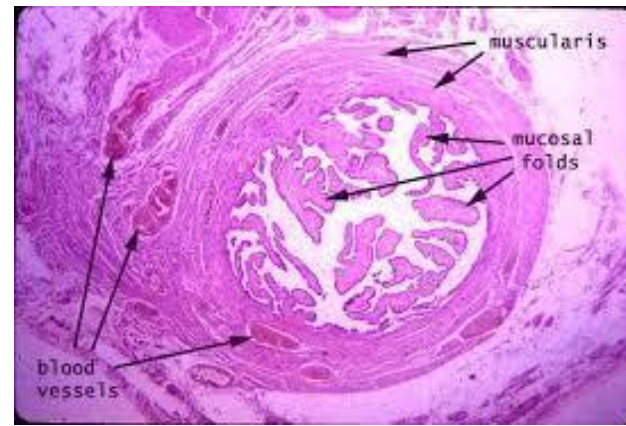
Identify the four regions of the oviduct:

Notice the complexity of folding of the lining mucosa

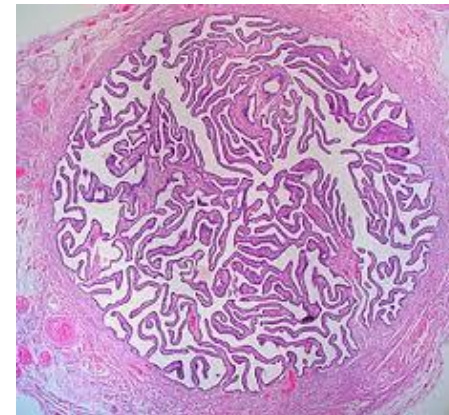
**Intramural**



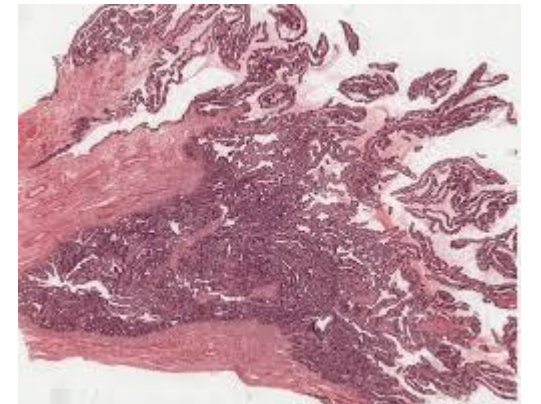
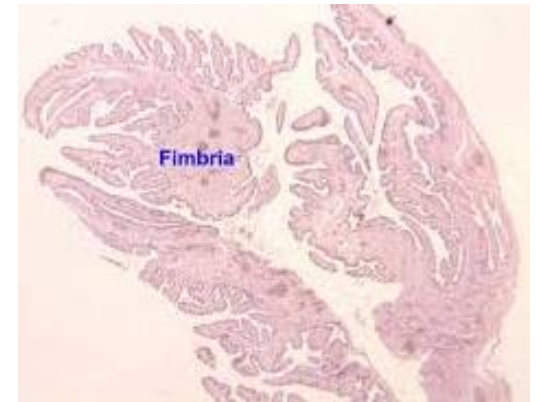
**Isthmus**



**Ampulla**



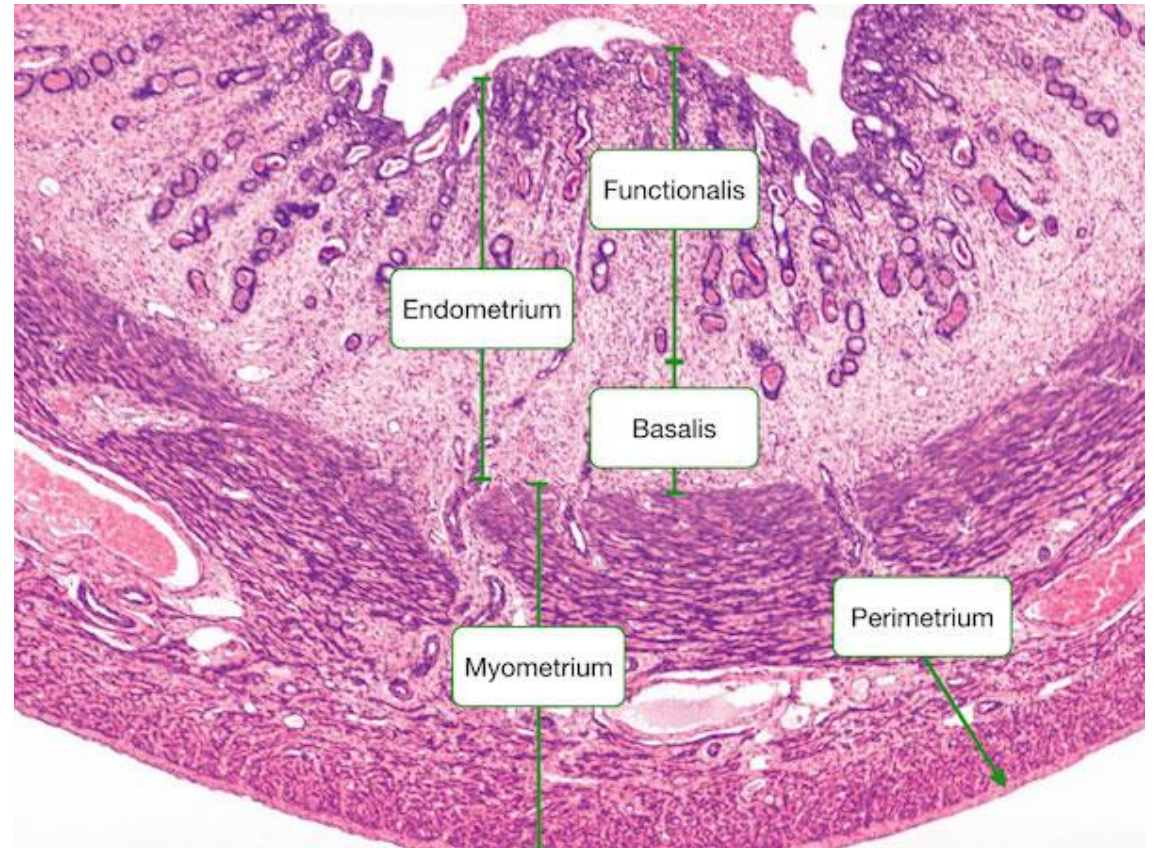
**Infundibulum**



# The Uterus

## Notice

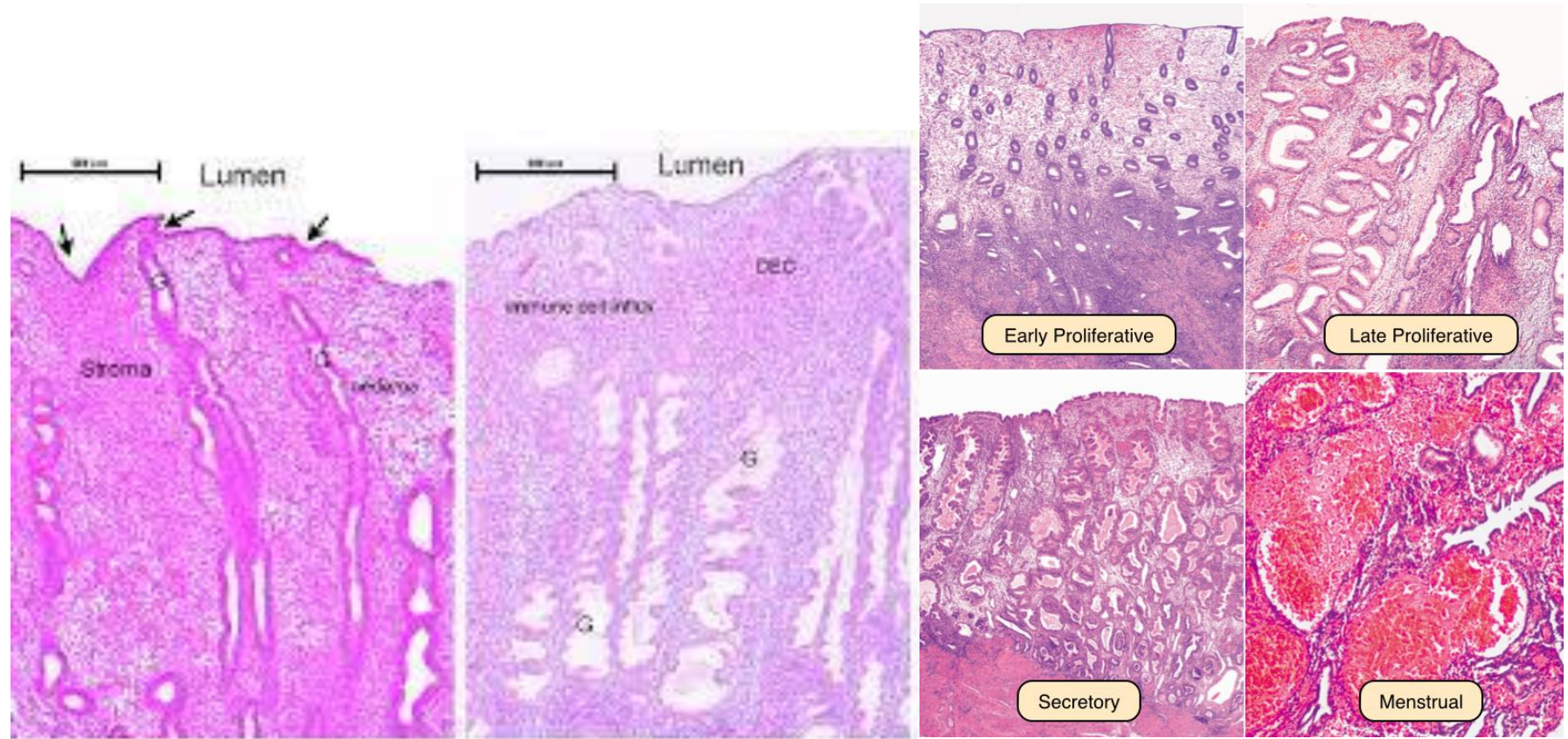
- Endometrium with the glands
- Basal and functional layers
- Myometrium
- Perimetrium





# Endometrium during the menstrual cycle

- Notice the differences in the endometrium in relation to the menstrual cycle

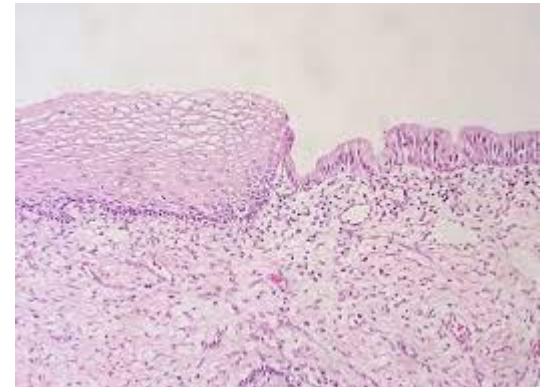
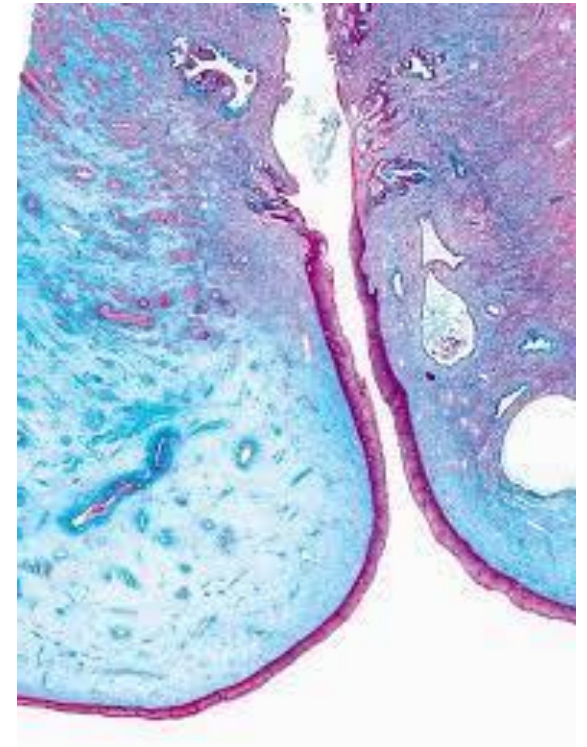
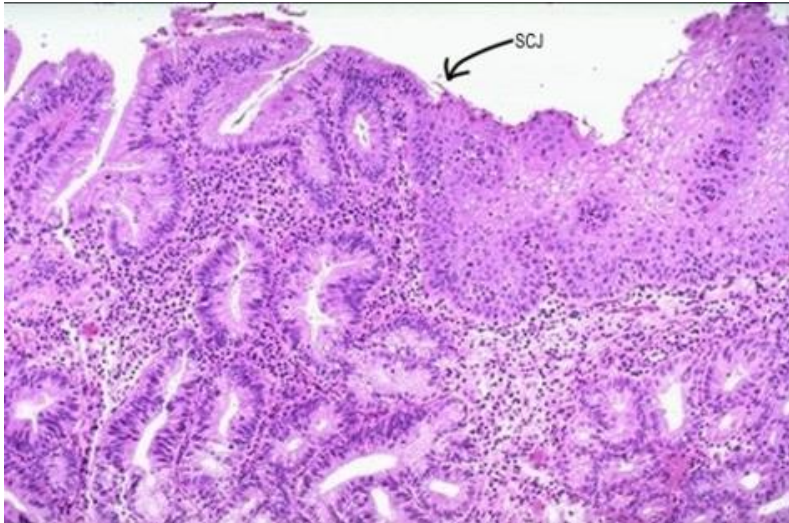




# The cervix of the Uterus

## Notice

- The transition zone of epithelium
- The cervical glands





# The Vagina

## Notice:

- The layers of the vagina
- Type of epithelium
- No glands

