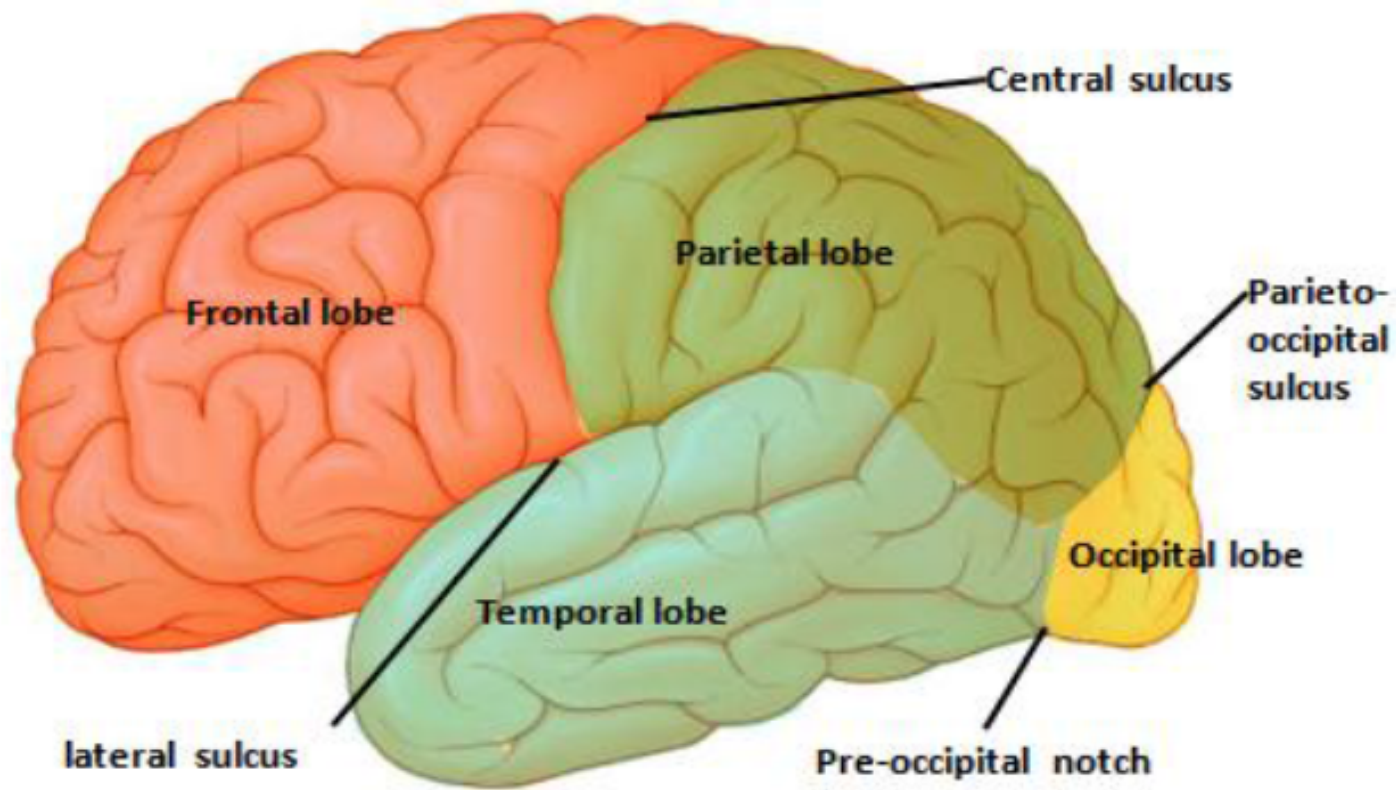
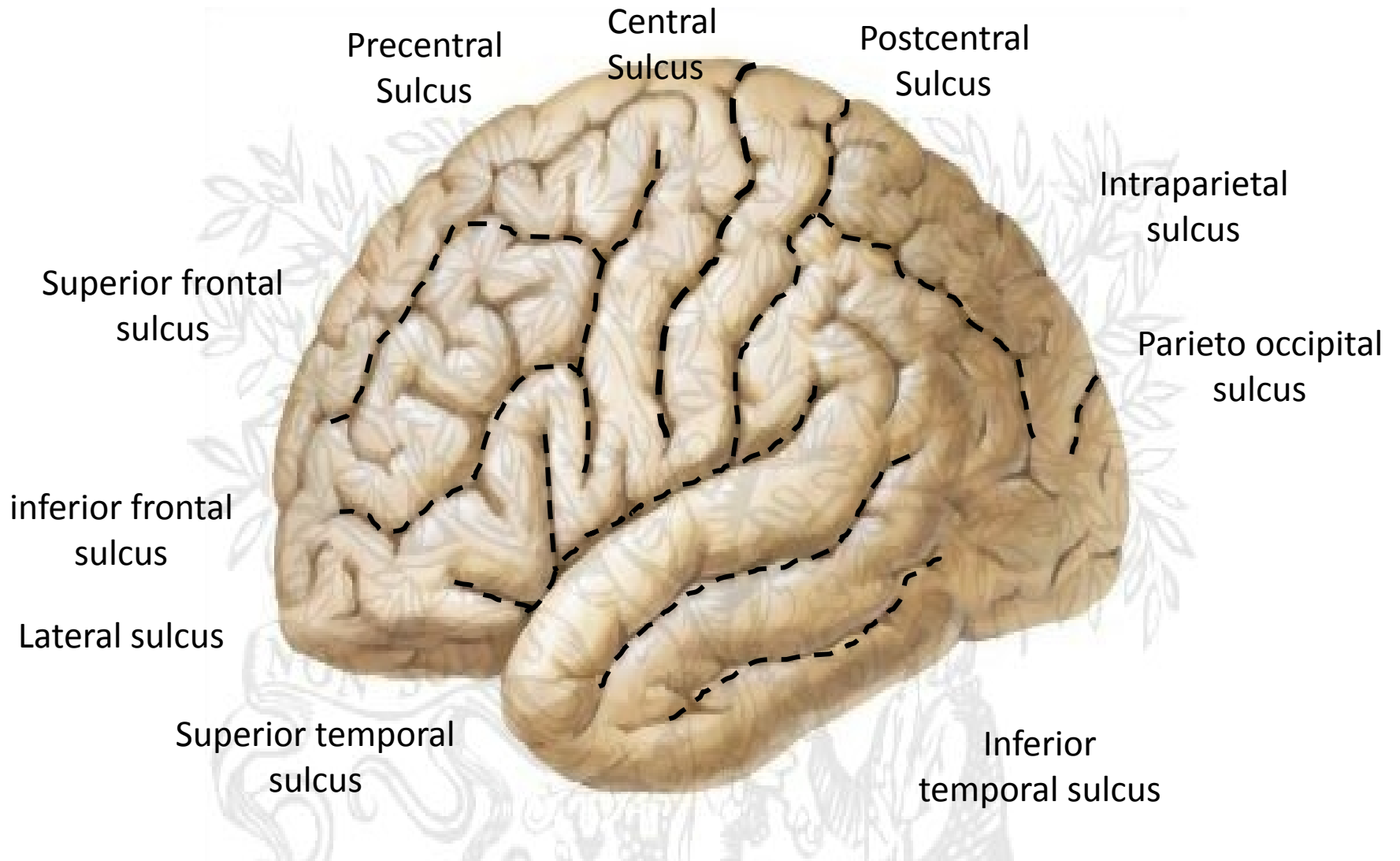


# Practical section 2 CNS

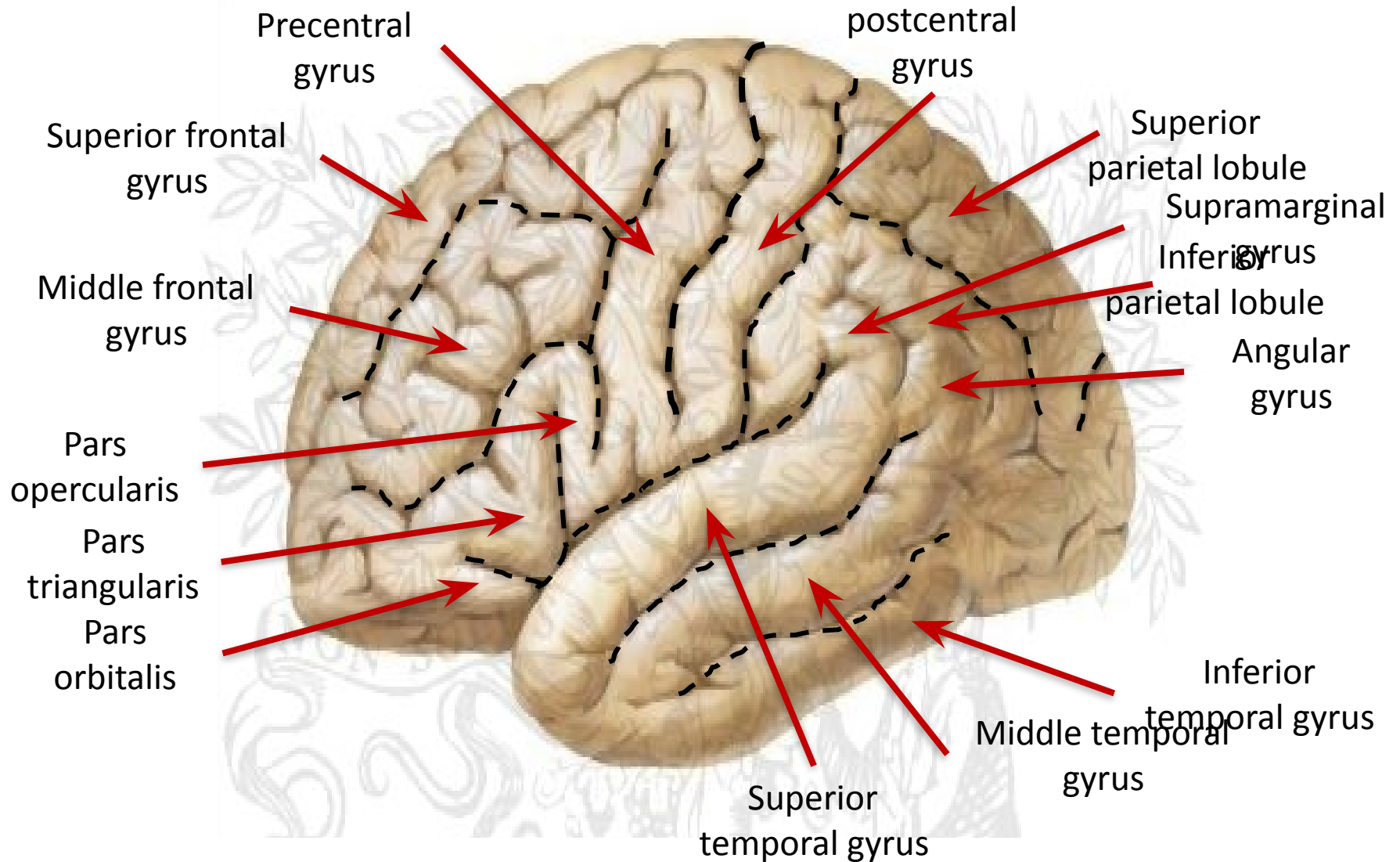
## 3<sup>rd</sup> year



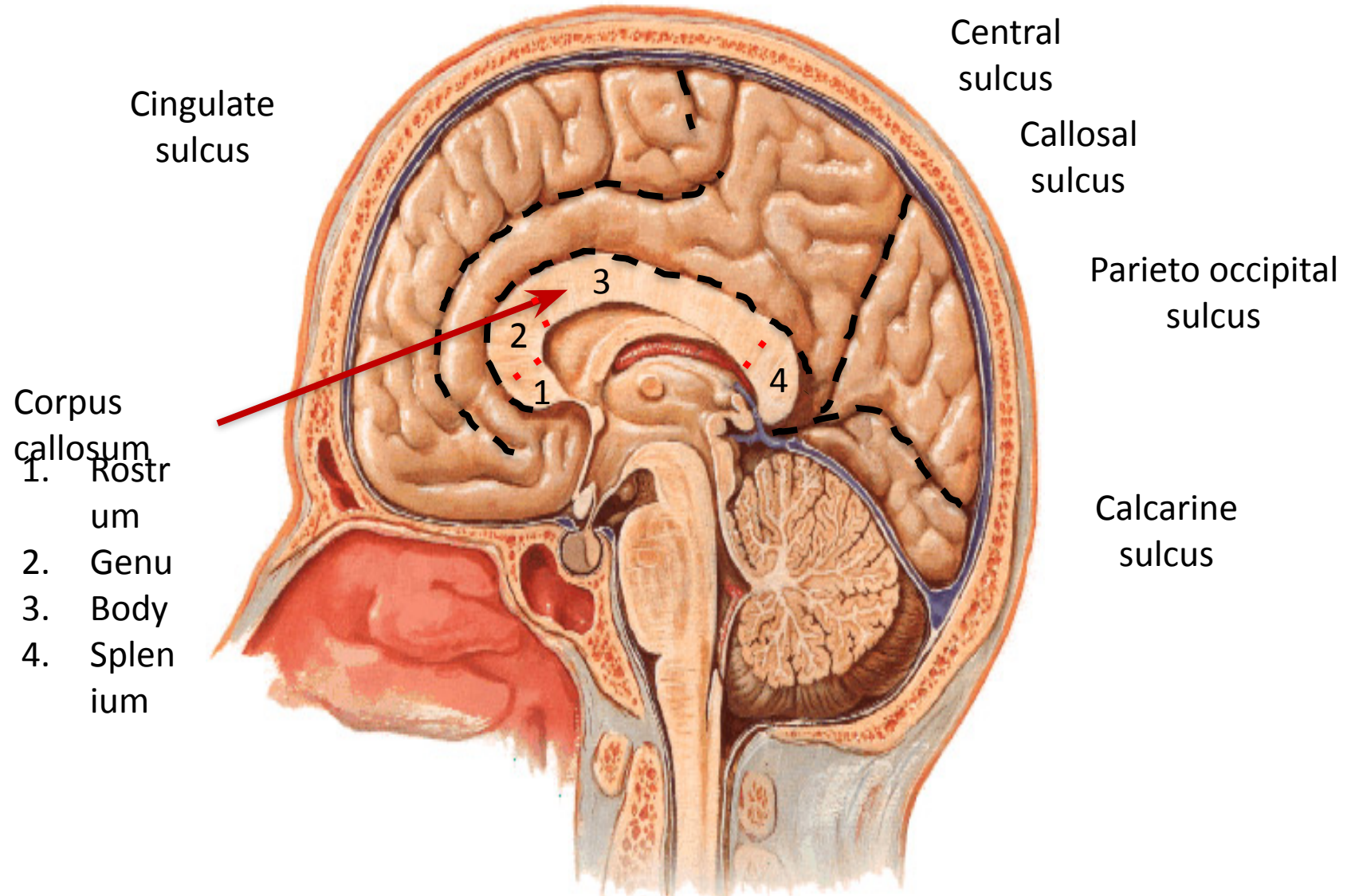
# LATERAL SURFACE OF THE BRAIN



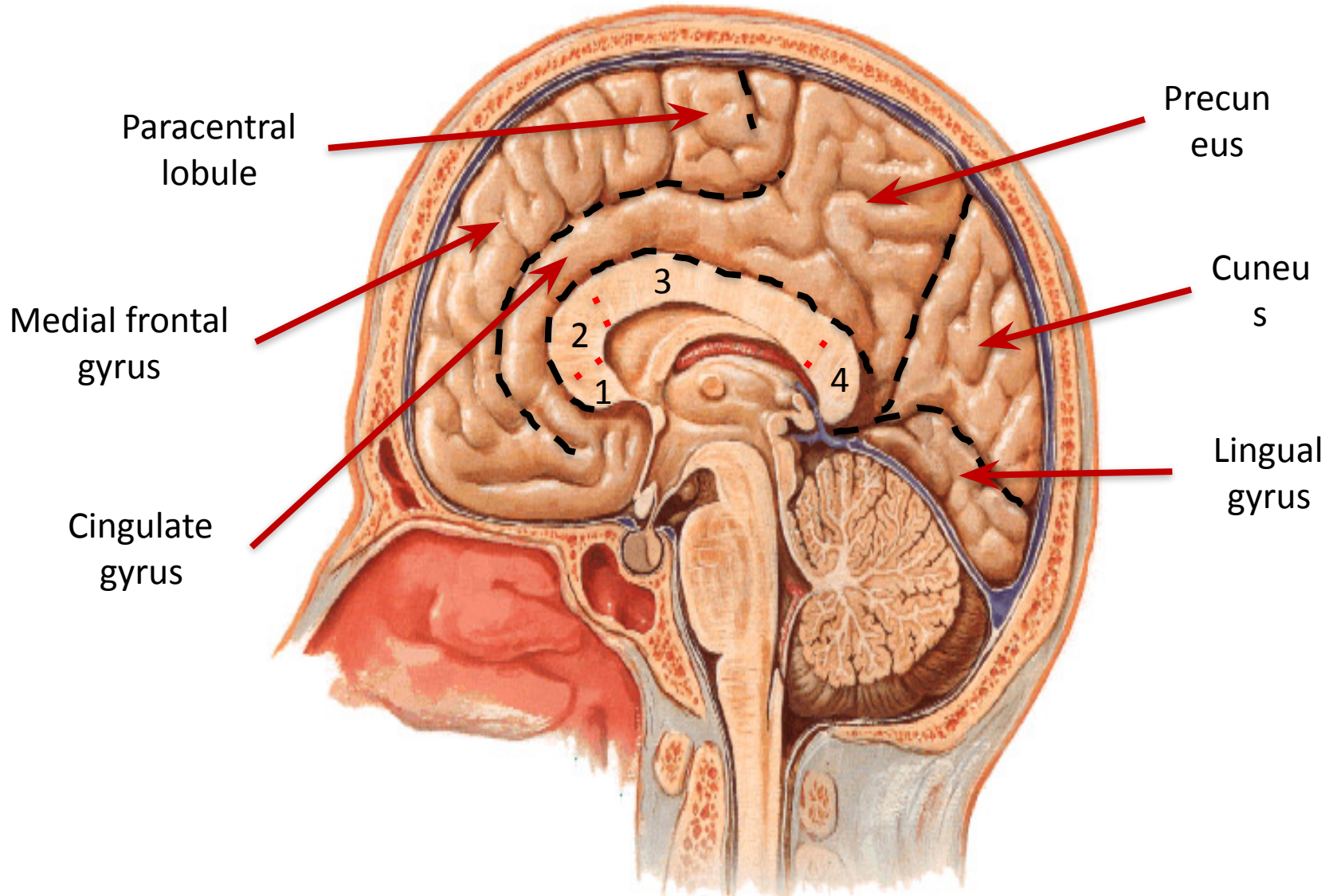
# LATERAL SURFACE OF THE BRAIN



# MEDIAL SURFACE OF THE BRAIN

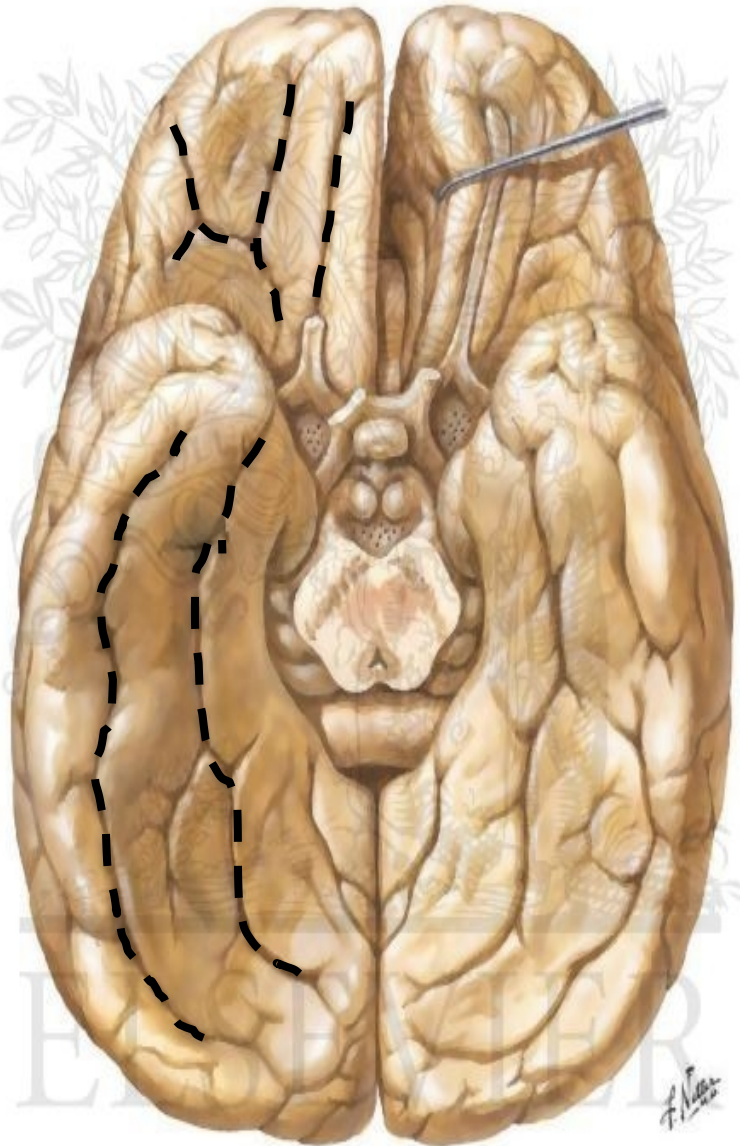


# MEDIAL SURFACE OF THE BRAIN

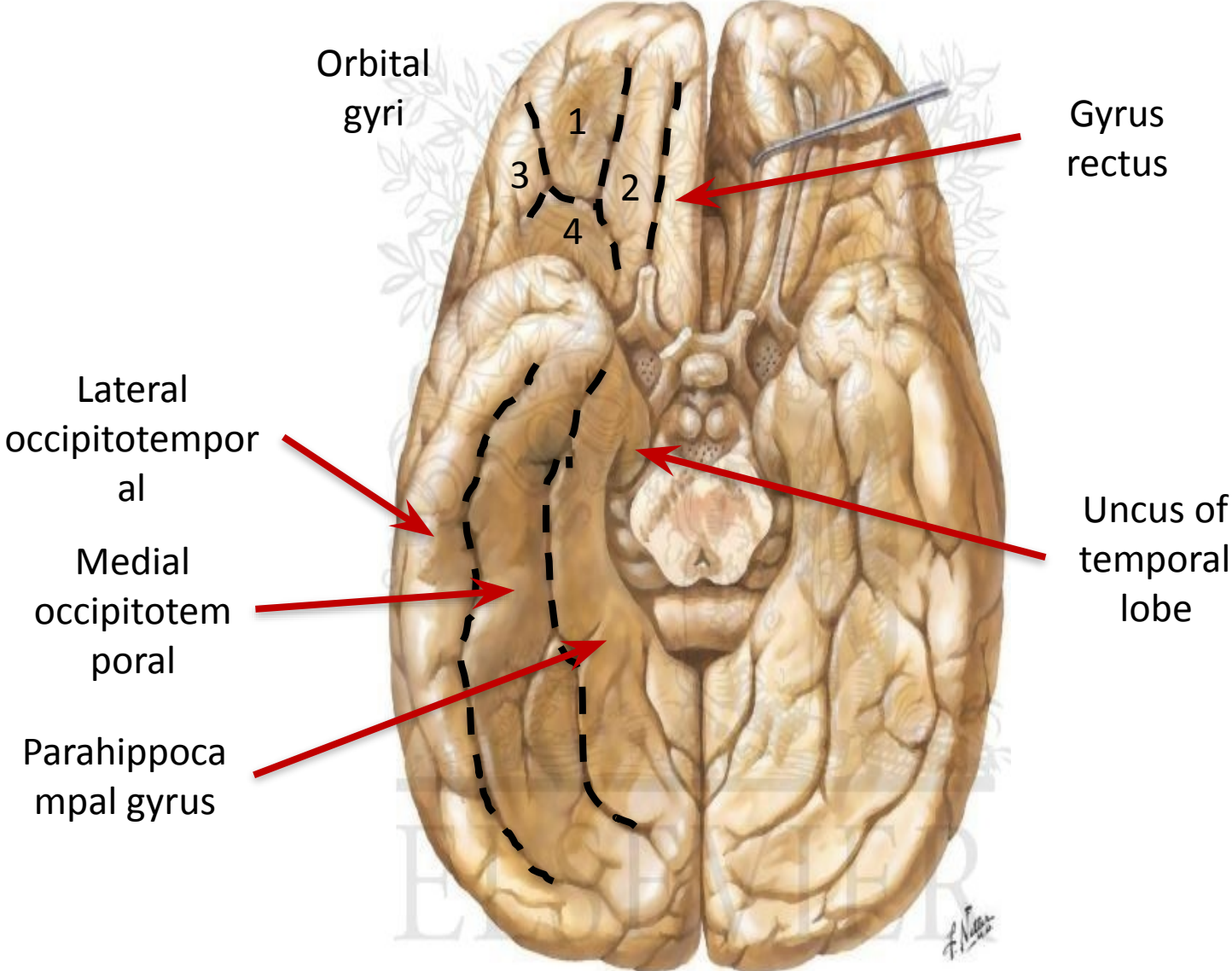


# INFERIOR SURFACE OF THE BRAIN

- H Shaped Orbital sulcus
- Olfactory sulcus
- Rhinal sulcus
- Occipitotemporal sulcus
- Collateral sulcus



# INFERIOR SURFACE OF THE BRAIN



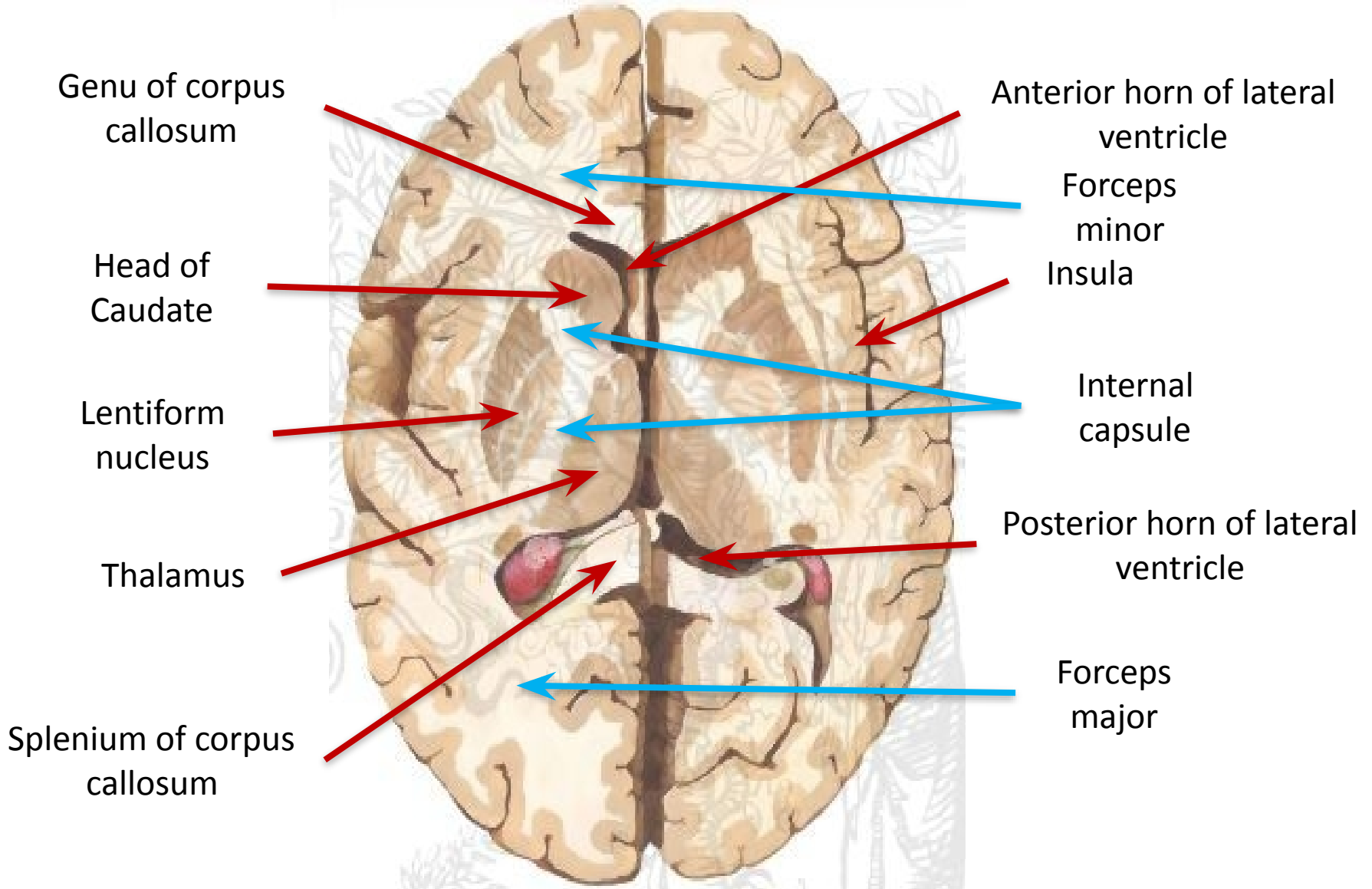


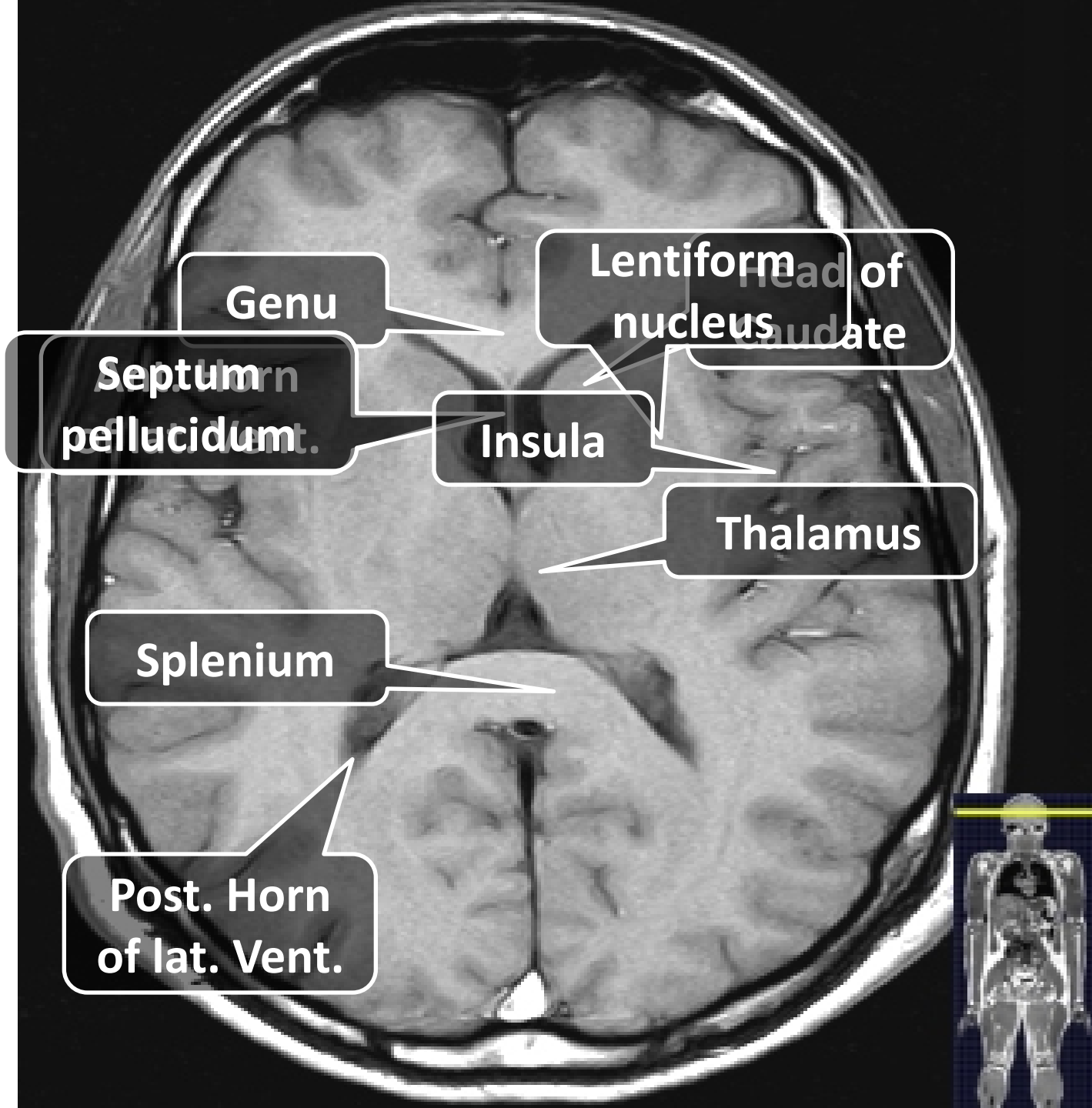
# Different sections in brain

Or Horizontal  
Or Transverse

# TRANSVERSE SECTION OF THE

BRAIN





**Genu**

**Septum  
pellucidum.**

**Splenium**

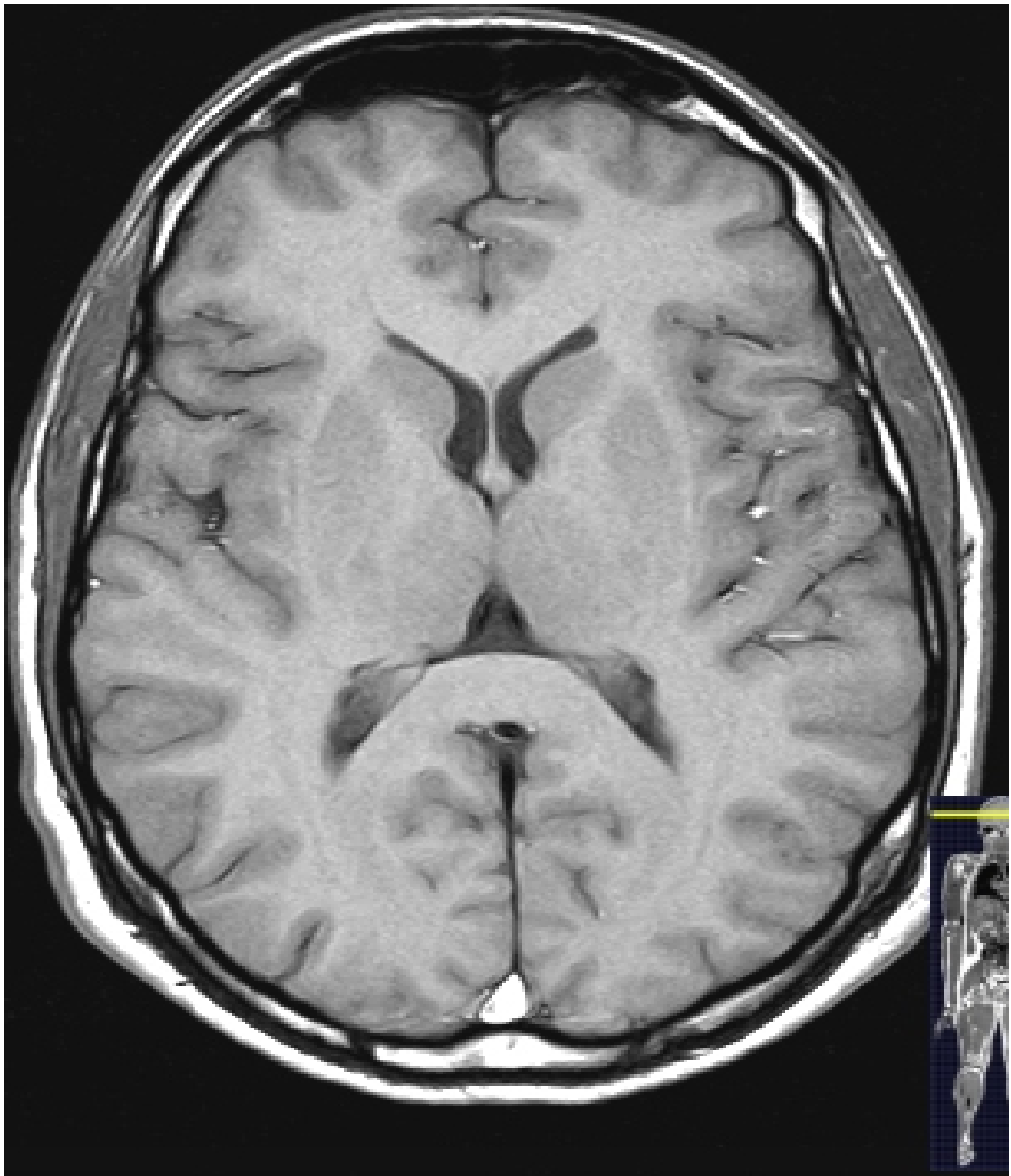
**Post. Horn  
of lat. Vent.**

**Insula**

**Thalamus**

**Lentiform  
nucleus**

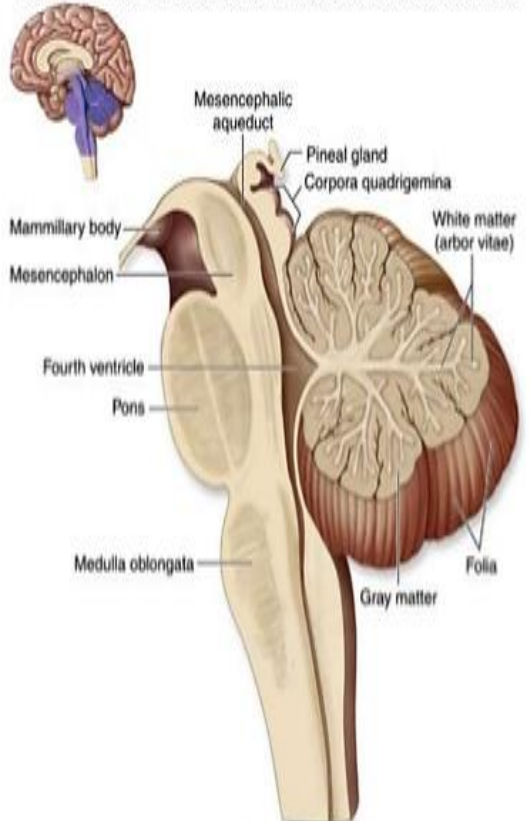




# The Cerebellum

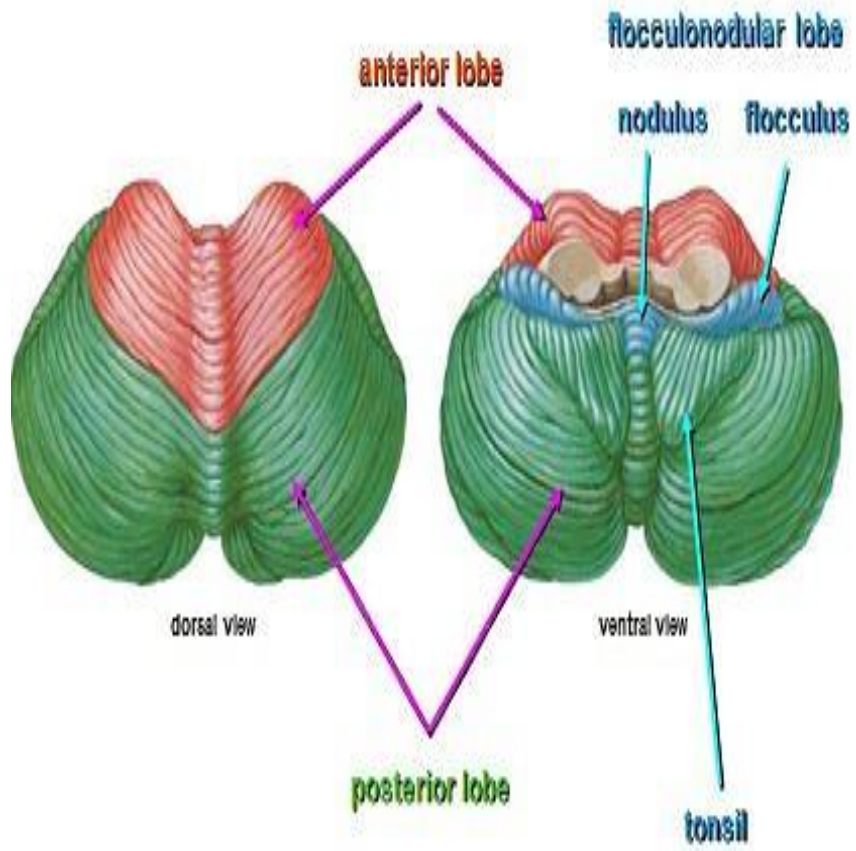


Copyright © The McGraw-Hill Companies, Inc. Permission required for reproduction or display.

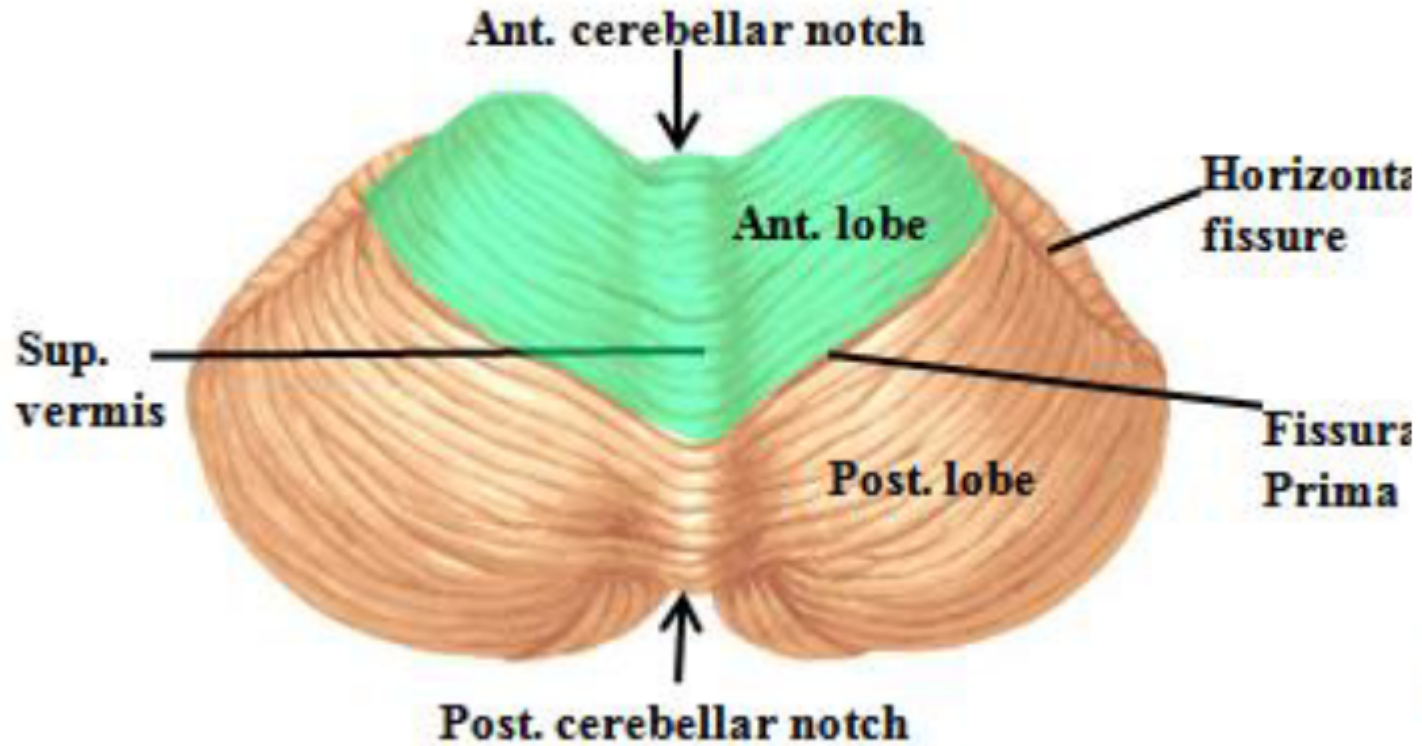


(a) Midsagittal section

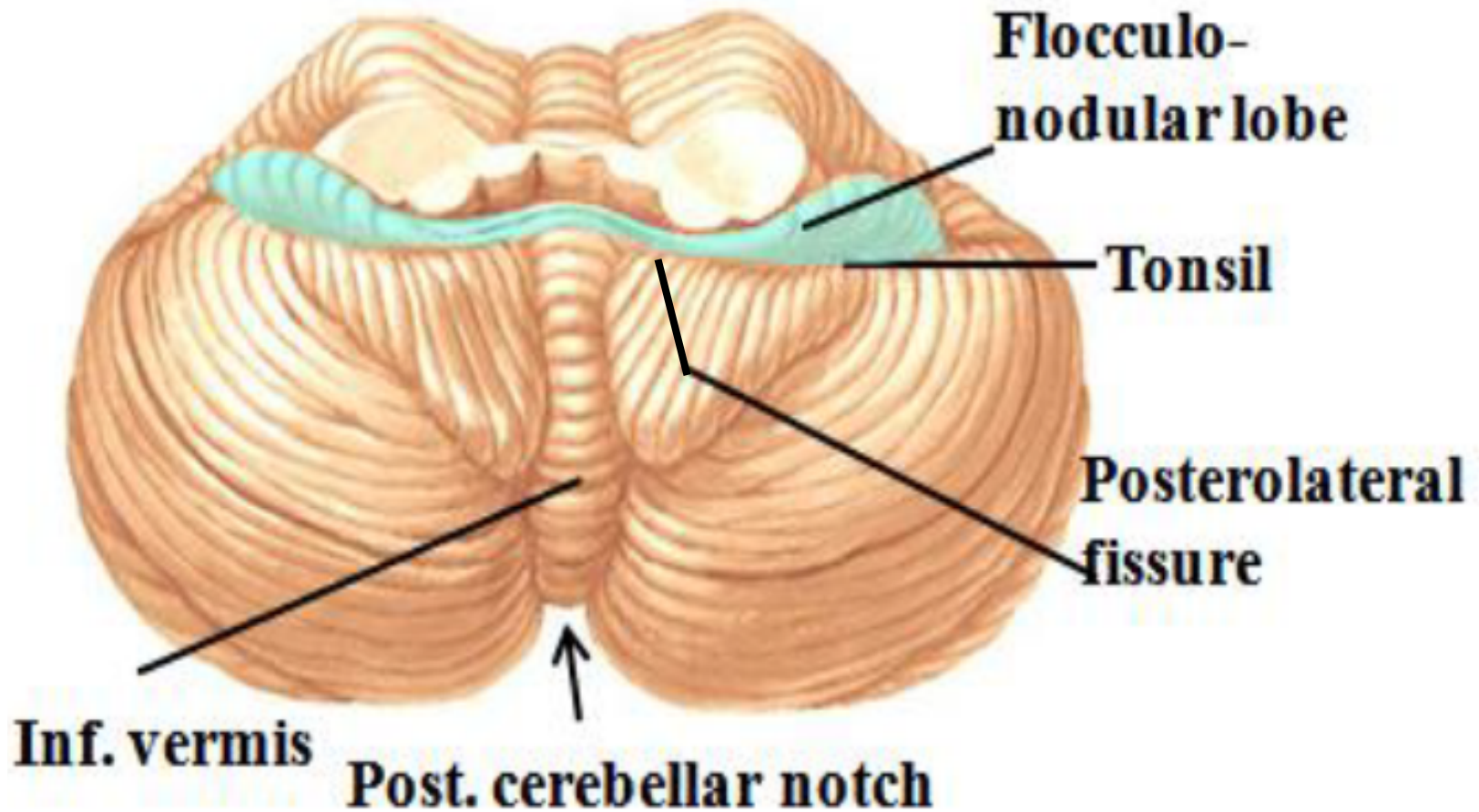
## CEREBELLUM



# Superior Surface of the Cerebellum



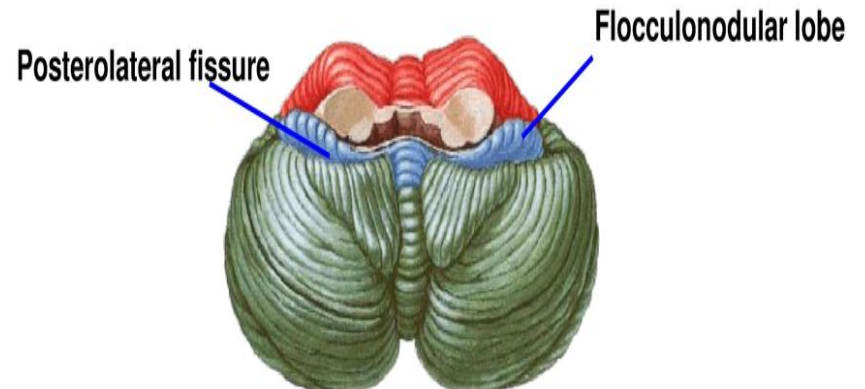
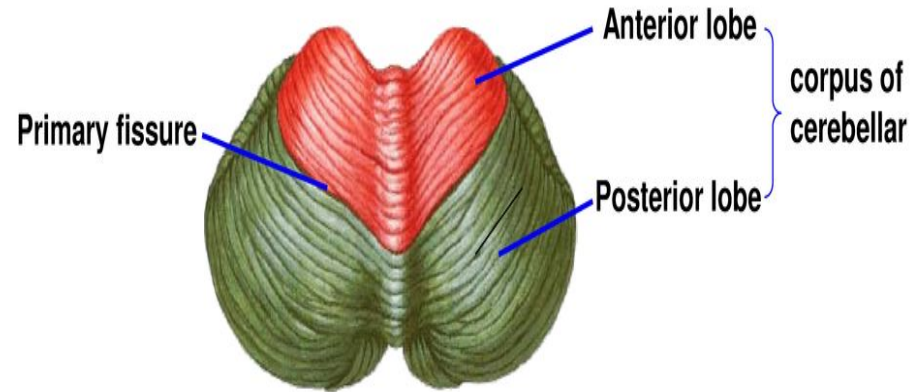
# Inferior Surface of the Cerebellum



# Anatomical Lobes of the Cerebellum

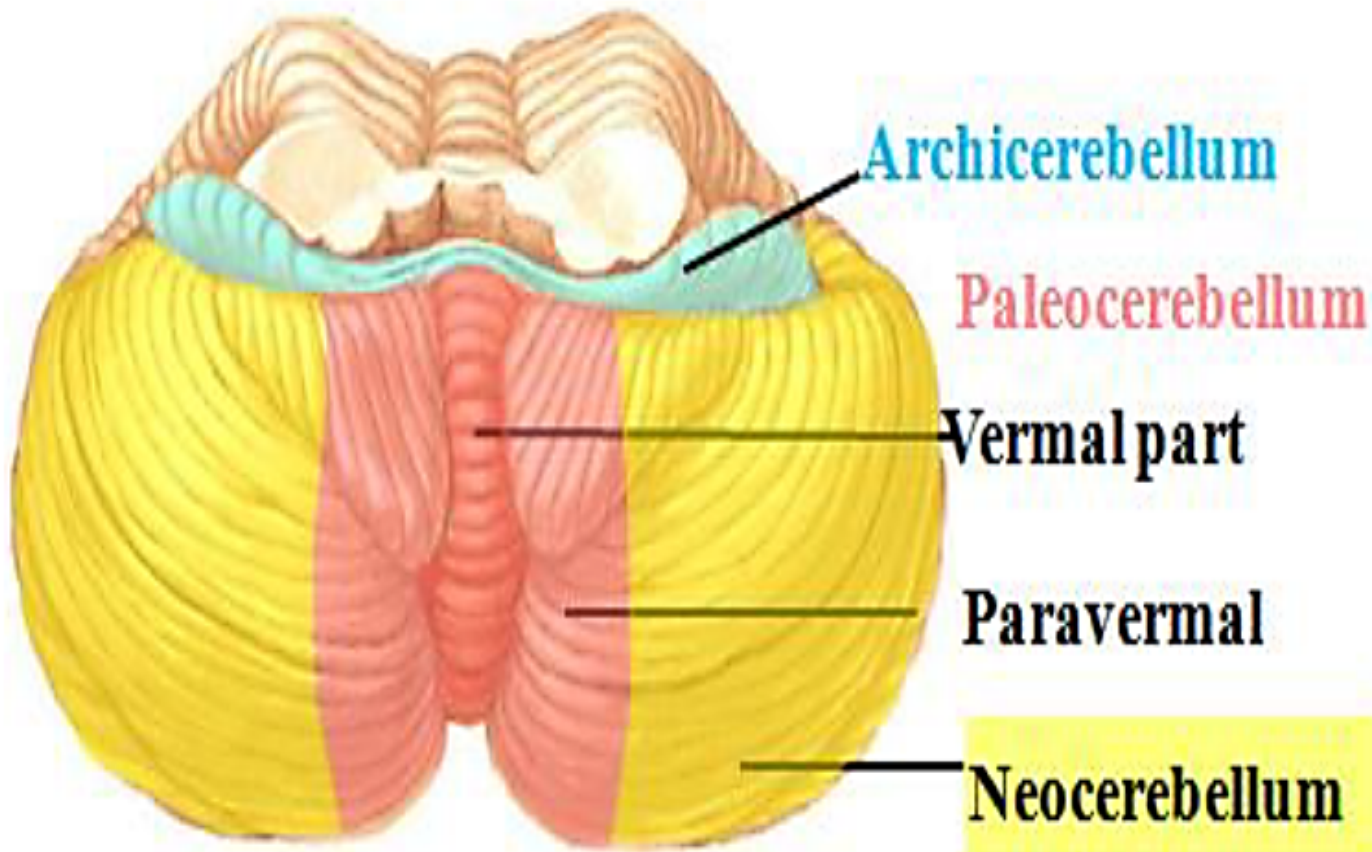


- Anterior lobe
- Posterior lobe
- Flocculonodular lobe





# Functional Lobes of the Cerebellum



**Thank you**