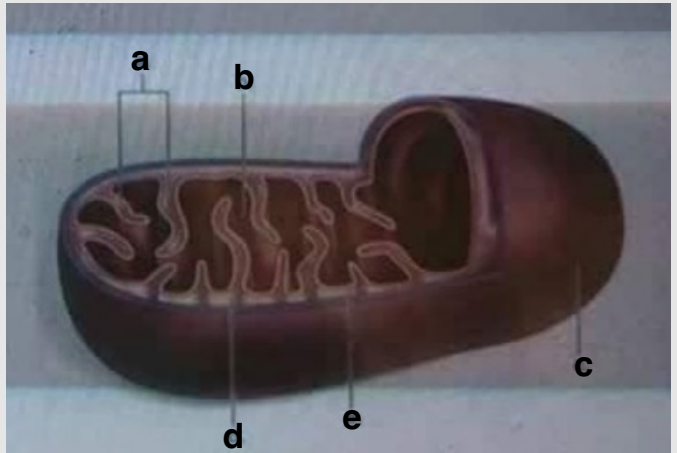


1

Identify "a" as the

1. stroma
2. matrix
3. cristae
4. intermembrane space



Answer : cristae

2

The following cells are expected to be very rich in Rough ER

1.  Red Blood Cells
2.  cells of glands that secrete testosterone (steroid).
3.  Muscle cells
4.  cells of glands that secrete hormones (protein)

Answer : cells of glands that secrete hormones (proteins)

3

When they are attached to ER, these .7  
\* :organelles are called  
(نقطة 1)

حدد إجابتك

- Bound endosomes
- Bound ribosomes
- Bound microsomes
- Free microsomes
- Free ribosomes

Answer : bound ribosomes

4

13. The organelle that contains H<sub>2</sub>O<sub>2</sub> is named: \*  
(1 Point)

Select your answer

- Peroxisome
- Centrosome
- Lysosome
- Ribosome

Answer : peroxisome

5

6. The nuclear envelope is composed of: \*  
(1 Point)

Select your answer

One membrane, as a monolayer with associated proteins

Two membranes, each as a monolayer with associated proteins

One membrane, as a bilayer with associated proteins

None of the choices given with associated proteins

Two membranes, each as a bilayer with associated proteins

Answer : two membranes each as a bilayer with associated proteins

6

20. The Middle lamella is formed between: \*  
(1 Point)

Select your answer

Secondary cell walls of adjacent cells

Primary cell walls of adjacent cells

21. Primary and secondary cell walls of adjacent cells

Cell wall and plasma membrane of adjacent cells

Answer : primary cell walls of adjacent cells

7

7. The liquid outside the thylakoids is named: \* (1 Point)

Select your answer

The matrix

The granum

8.

The stroma

The cytosol

Answer : the stroma

8

\* :Smooth ER is involved in .7 (1 نقطة)

^

حدد اجابتك

Ca<sup>2+</sup> storage

Glycoproteins synthesis

Transport vesicles distribution

Cell division

Answer :Ca<sup>2+</sup> storage

9

Plasmodesmata in plant cells are most similar in function to gap junctions in

animal cells

(1 نقطة)

True

False

Answer : true

10

\*:Archaea's DNA is present in 1 (1 نقطة)

حدد إجابتك

The plasma membrane

The nucleoid region

The nucleus

The cytosol

Answer : the nucleoid region

11

Which organelle is primarily involved in the synthesis of oils, phospholipids, and steroids?  
(1 نقطة)

ribosome

**smooth endoplasmic reticulum**

lysosomes

contractile vacuoles

Answer : smooth endoplasmic reticulum

12

Which of the following is NOT found in a prokaryotic cell?  
(1 نقطة)

DNA

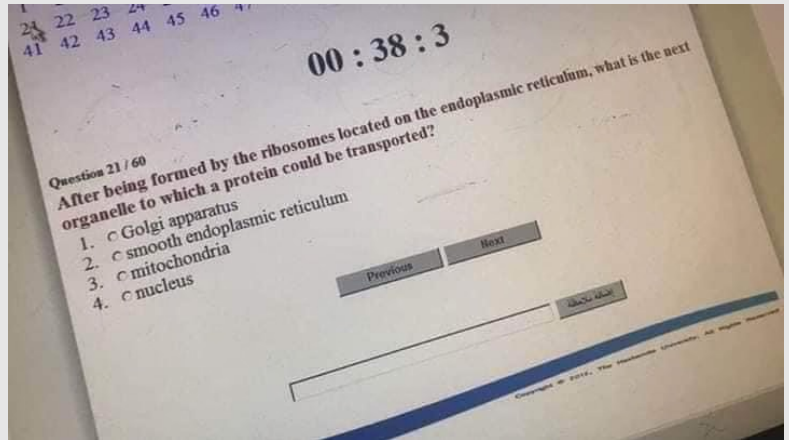
plasma membrane

**endoplasmic reticulum**

ribosomes

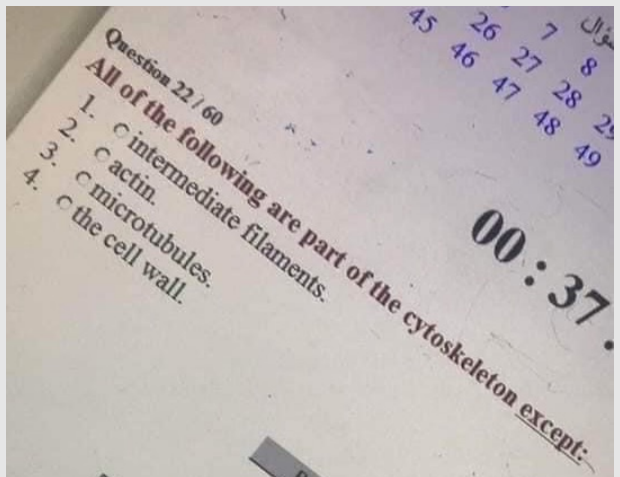
Answer : endoplasmic reticulum

13



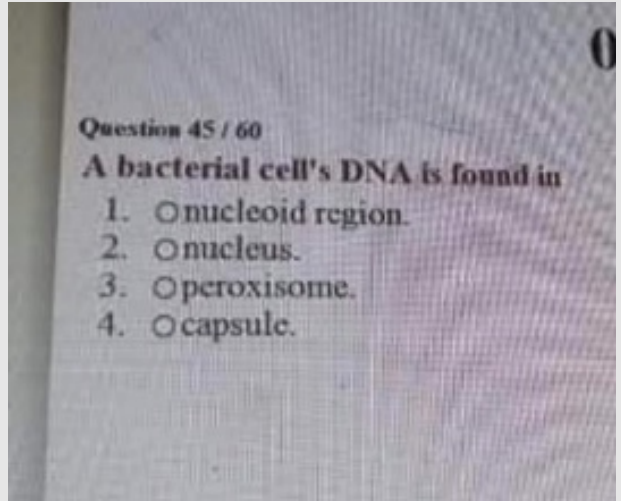
Answer : Golgi apparatus

14



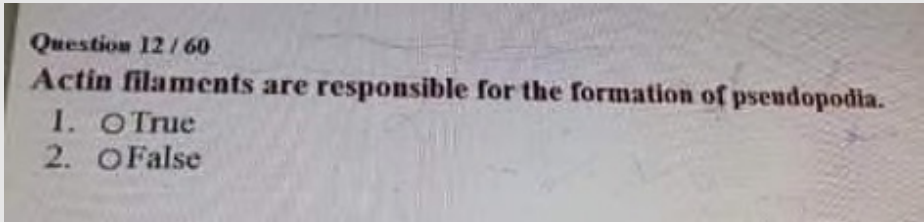
Answer : the cell wall

15



Answer : nucleoid region

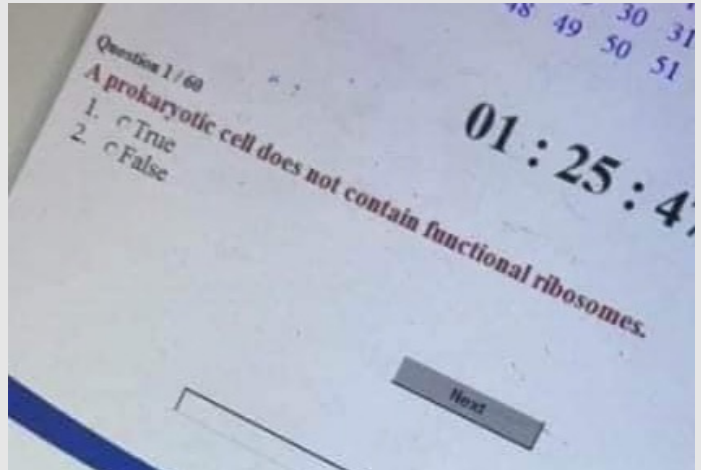
16



Answer : true

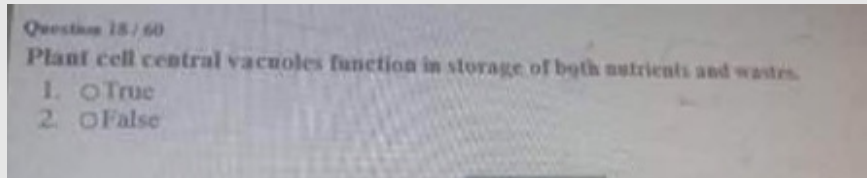


17



Answer : false

18



Plant cell central vacuoles function in storage of both nutrients and waste

Answer : true

19

Question 39 / 40

The cell wall of plant cells consists of

1.  collagen fibers embedded in a matrix of glycoproteins
2.  Fibronectin embedded in a matrix of proteins and polysaccharides
3.  cellulose fibrils embedded in a matrix of other polysaccharides and proteins
4.  collagen fibers embedded in a matrix of waxes

The cell wall of plant cells consists of

Answer : cellulose fibrils embedded in a matrix of other polysaccharide and proteins

20

Question 26 / 40

Which of these is NOT part of the endomembrane system of the cell?

1.  mitochondria
2.  endoplasmic reticulum
3.  lysosomes
4.  Golgi complex

Previous

Next

Which of these is not part of the endomembrane system of the cell

Answer : mitochondria

21

Question 35 / 60

Plant cells do not have mitochondria.

1.  True
2.  False

Answer : false

22

Question 37 / 40

A special arrangement of microtubules is responsible for the structure of flagella and cilia.

1.  True
2.  False

Answer : true

23

Question 18 / 60

Organelles other than the nucleus that contain DNA include

1.  ribosomes.
2.  mitochondria.
3.  Golgi Apparatus
4.  Lysozome

Answer : mitochondria

24

Cells that do NOT have cell walls are:

1.  animal cells.
2.  plant cells.
3.  fungal cells.
4.  prokaryotic cells.

Answer : animal cells

25

Question 38 / 60

are to ribosomes as lipids are to \_\_\_\_\_.

1.  carbohydrates; rough endoplasmic reticulum
2.  nucleoli; lysosomes
3.  sugars; peroxisomes
4.  proteins; smooth endoplasmic reticulum

Answer : proteins , smooth endoplasmic reticulum

26

Question 40 / 40

Some plant cells add thick secondary cell wall outside the primary cell wall.

1.  True
2.  False

Answer : false

27

Question 35 / 40

Mitochondria have an inner membrane system called thylakoid membranes.

1.  True
2.  False

Answer : false

28

Question 33 / 40

In plant cells, protein synthesis occurs in/on the \_\_\_\_\_

1.  Cytosol
2.  Rough ER
3.  Matrix of the mitochondria
4.  Stroma of chloroplasts
5.  All of the above

Answer : all of the above

29

Question 20 / 40

The middle lamella is a thin layer between primary walls of adjacent plant cells and is made of cellulose.

1.  True
2.  False

Answer : false

30

Question 22 / 40

Organelles that contain DNA include

1.  ribosomes.
2.  chloroplasts.
3.  mitochondria.
4.  Only chloroplasts and mitochondria.

السؤال مش واضح :

Answer : only chloroplast and mitochondria

31

Question 11 / 40

Which is a true statement about ribosomes?

1.  Ribosomes contain DNA and protein.
2.  Ribosomes are active in carbohydrate synthesis.
3.  Ribosomal subunits are formed by the nucleolus.
4.  Polyribosomes are the subunits of ribosomes.

Answer : ribosomal subunits are formed by the nucleolus

32

Question 17 / 40

Within the centrosome of an animal cell are a pair of centrioles .

1.  True
2.  False

Previous

Next

Answer : true



33

Question 13 / 40

All the following statements about peroxisomes are correct, **except**

1.  They are organelles bounded by a single membrane
2.  They contain enzymes that transfer hydrogen from various substances to oxygen
3.  They contain enzymes that convert hydrogen peroxide to water
4.  They bud from (come from) the endomembrane system

Answer : They bud from (come from)  
the endomembrane system

34

Question 7 / 40

All of the following are used to maintain the shape of animal cells **EXCEPT ?**

1.  microtubules
2.  microfilaments
3.  cell walls
4.  intermediate filaments

Answer : cell wall

35

Extracellular matrix of plant cells is made of glycoproteins.

1.  True
2.  False

Answer : false