



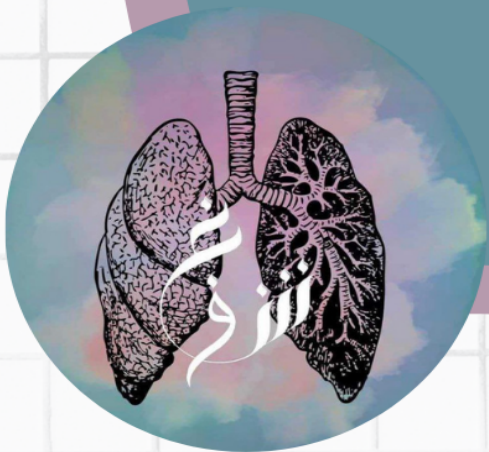
BIOLOGY 105

PAST PAPERS – SECOND EXAM

chapter no: **12+13**

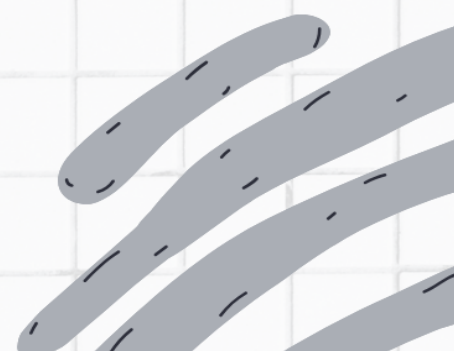
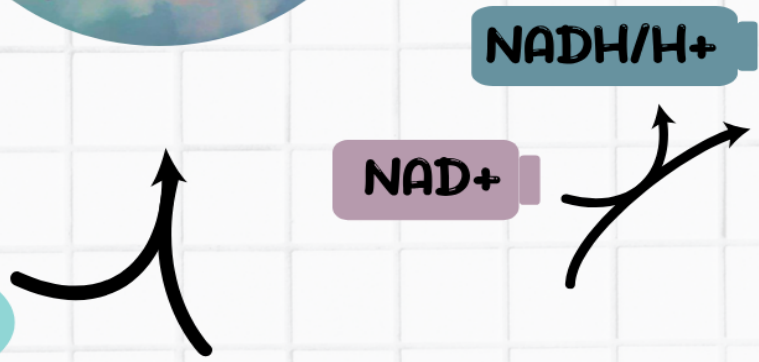
Done by :

Al-Miqdad Nwihi



H⁺

H₂O



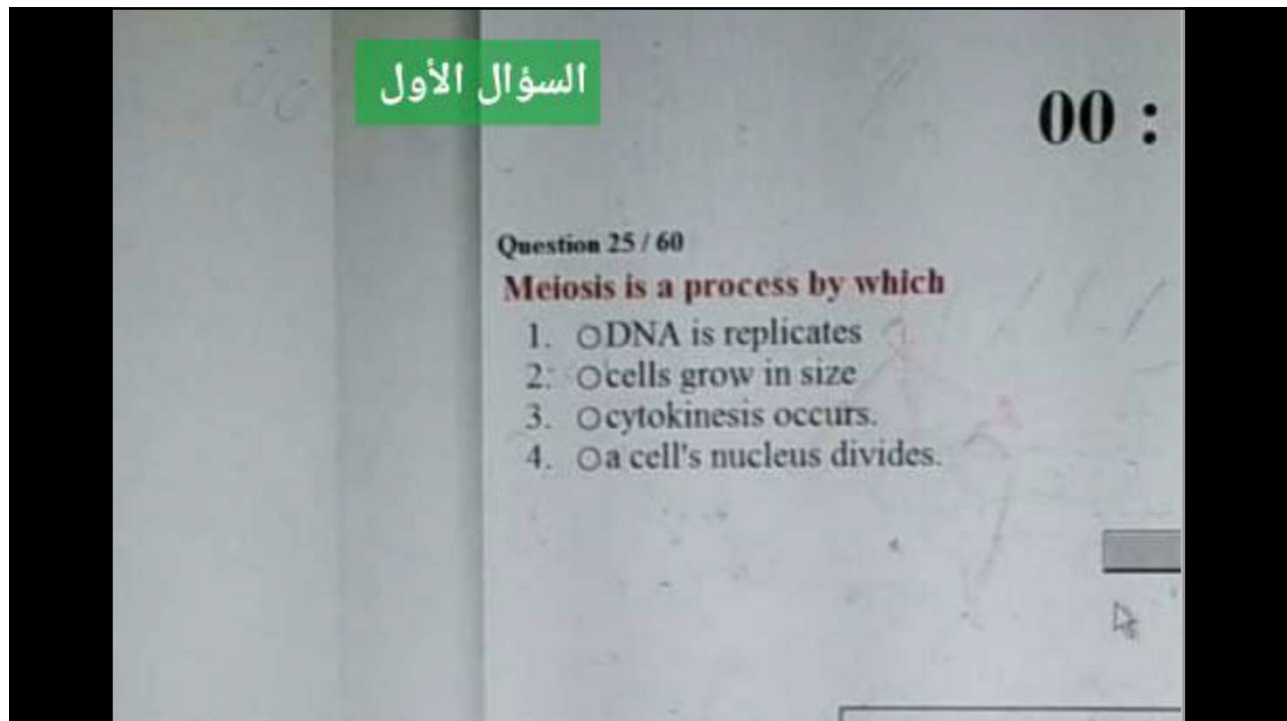
Chapter 13 + 12

Meiosis and Mitosis

PAST PAPERS

1

Q 1



2

Q 2

Question 16 / 60

السؤال الثاني

What is a karyotype?

1. An uncontrolled cell division
2. A segment of DNA that controls the production of a protein
3. An arrangement of every pair of homologous chromosomes within a cell, organized according to size and shape
4. a system of classifying cell nuclei

Next

3

Q 3

السؤال الثالث

00 : 42 : 31

Question 37 / 60

In animals, somatic cells are produced by mitosis and _____ are produced by meiosis.

1. gametes
2. clones
3. zygotes
4. diploid cells

4

Q 4

السؤال الرابع

01 : 28 : 24

Question 2 / 60

The centromere is a region in which

1. chromatids are attached much closely to one another.
2. spindle microtubules are organized from
3. chromosomes are grouped during telophase.
4. new spindle microtubules form.

Next

5

Q 5

السؤال الخامس

01 : 27 : 21

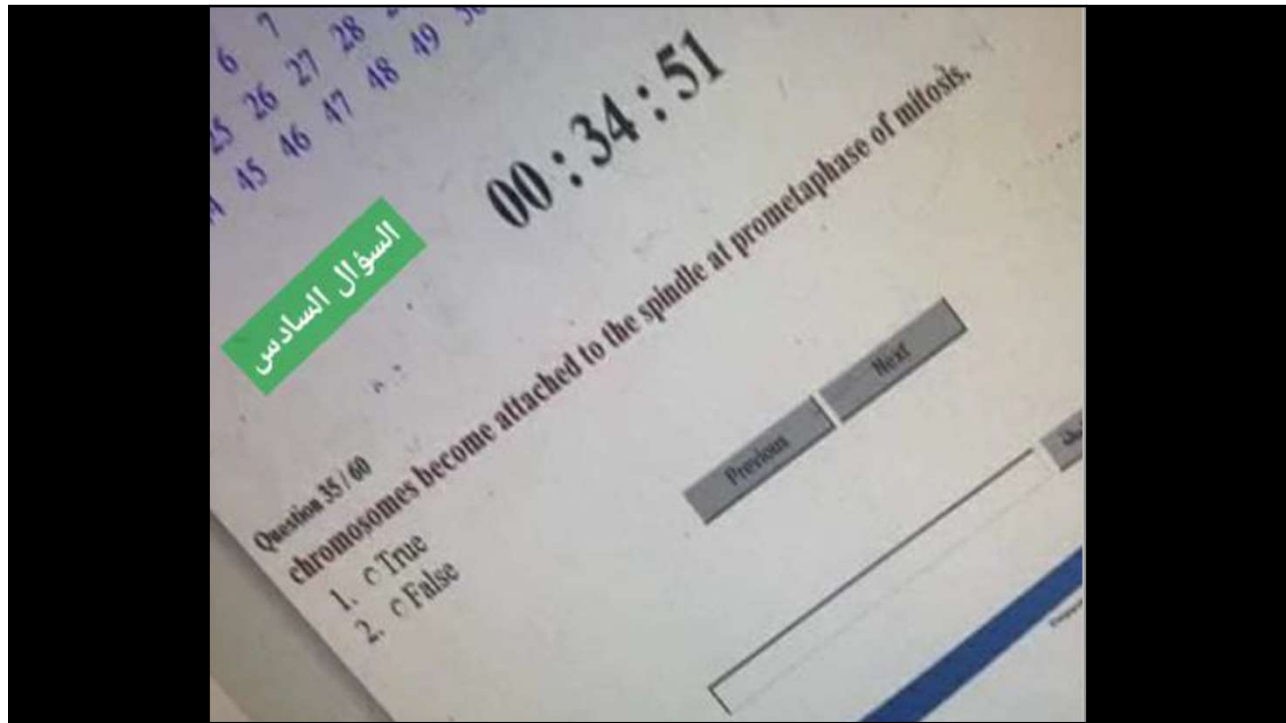
Question 3 / 60

The haploid (n) number of chromosomes for humans is

1. 23.
2. 24.
3. 46.
4. 48.

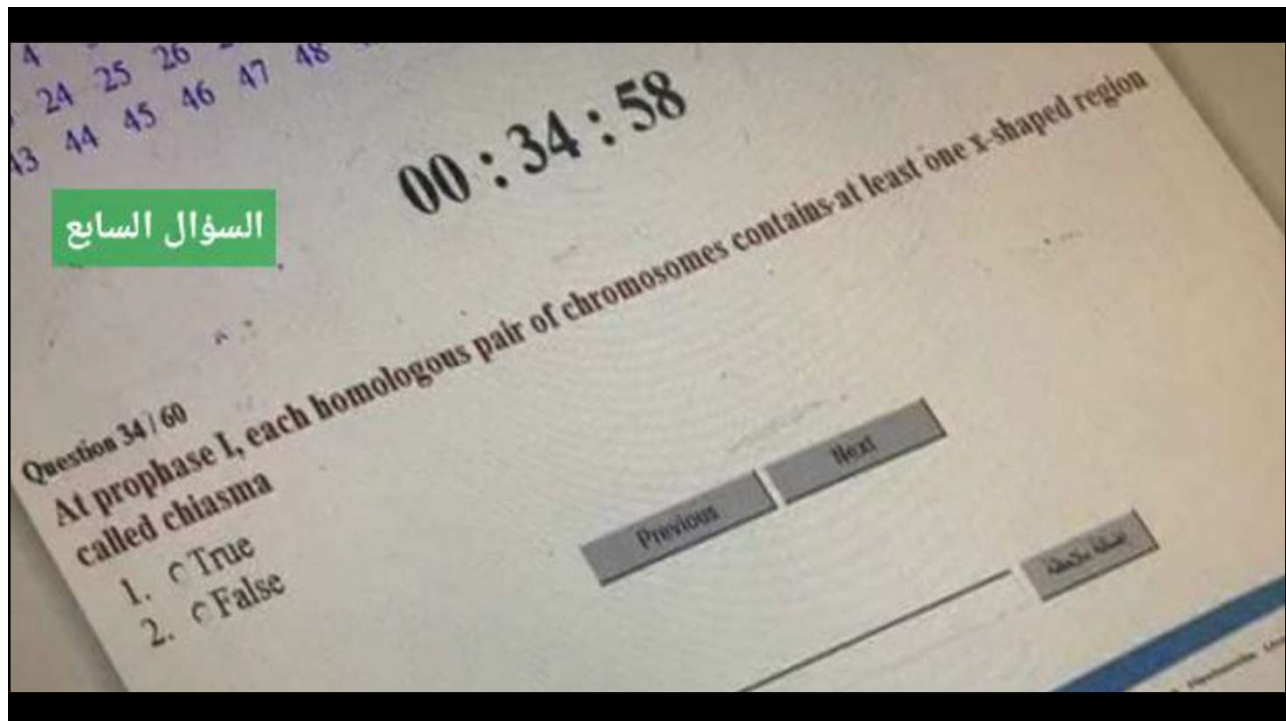
6

Q 6



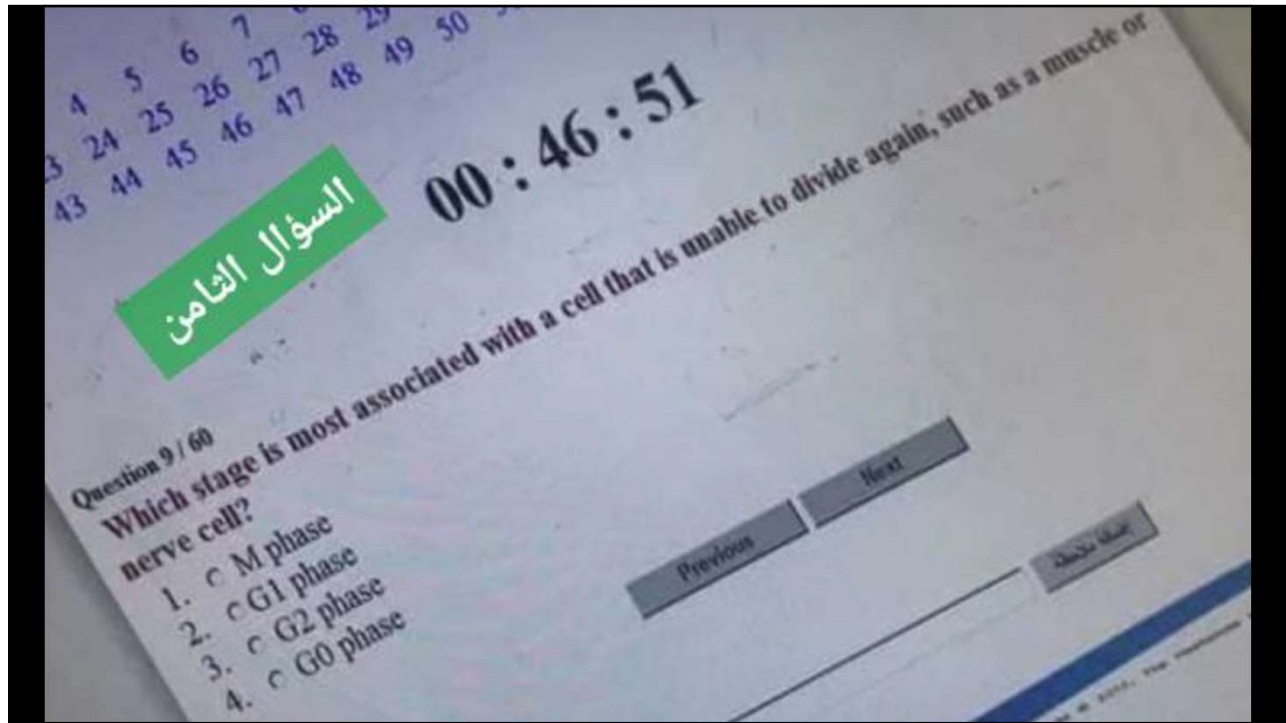
7

Q 7



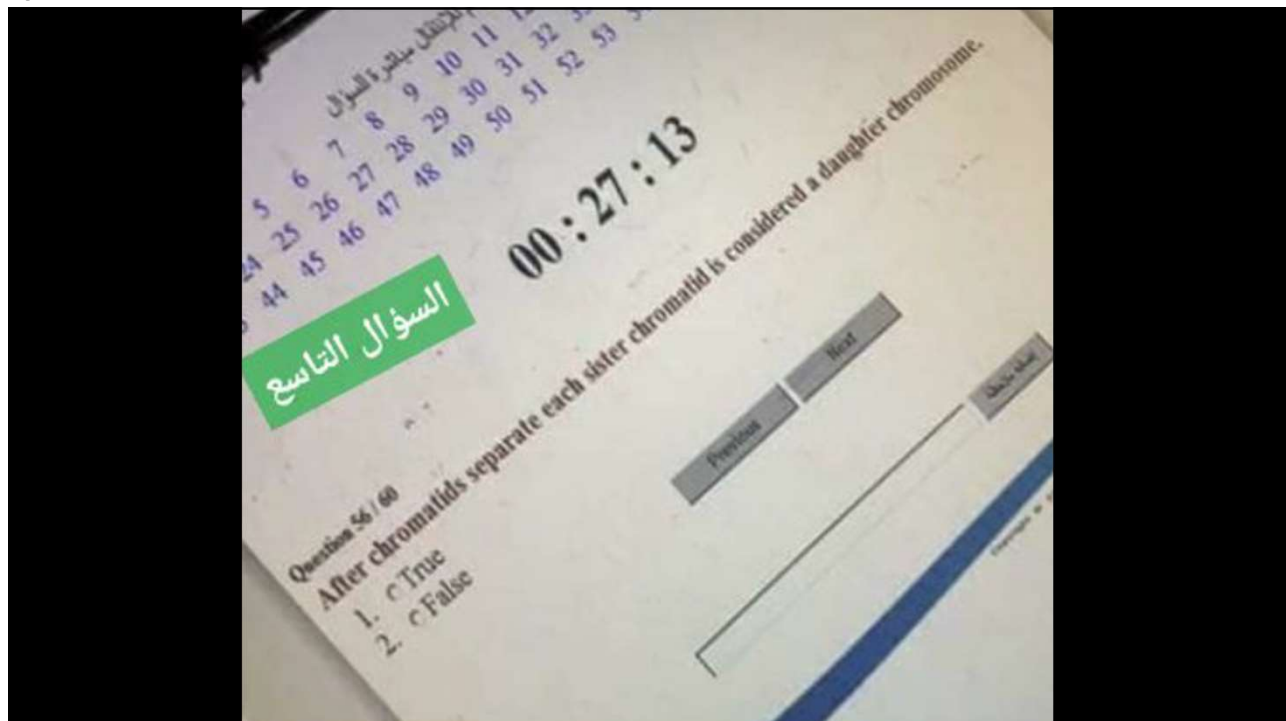
8

Q 8



9

Q 9



10


Q 10

01 : 18 : 25

Question 13 / 60 **السؤال العاشر**

If the cell whose nuclear material is shown in the above figure continues toward completion of mitosis, which of the following events would occur next?

1. spindle fiber formation
2. cell membrane synthesis
3. synthesis of chromatids
4. formation of telophase nuclei



11

Q 11

السؤال الحادي عشر

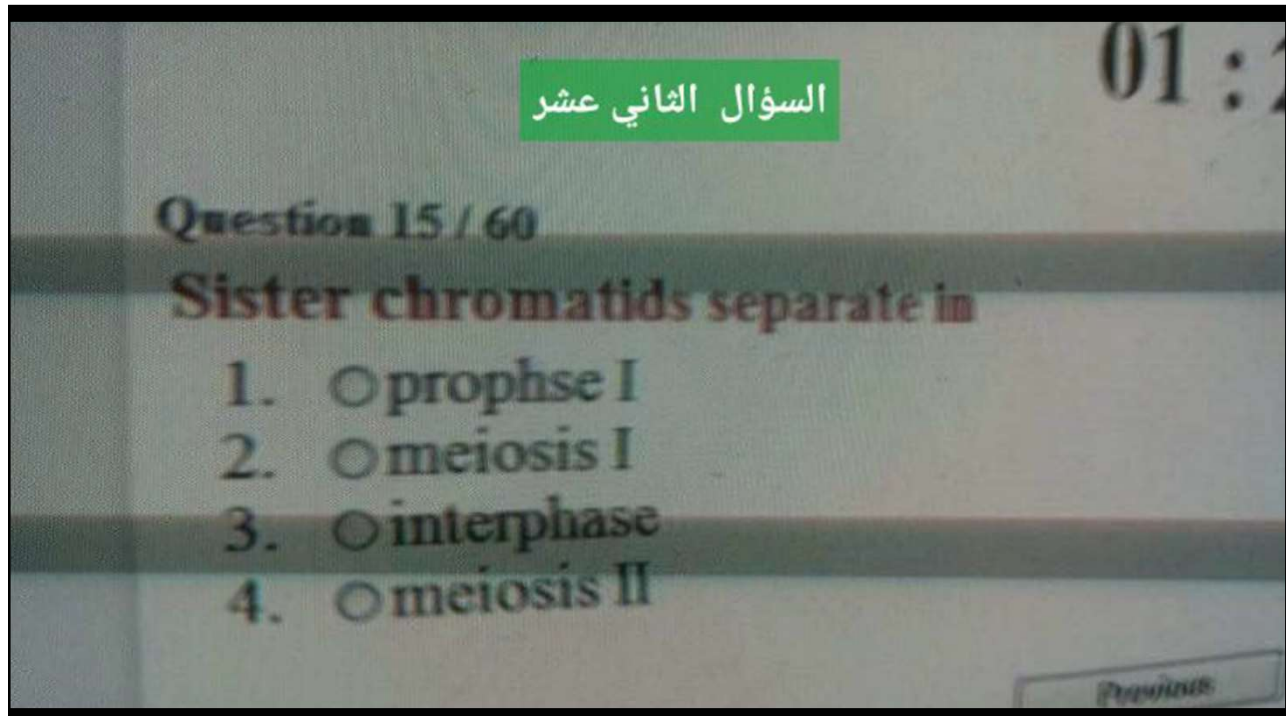
Question 35 / 60

Mitosis is made from two divisions.

1. True
2. False

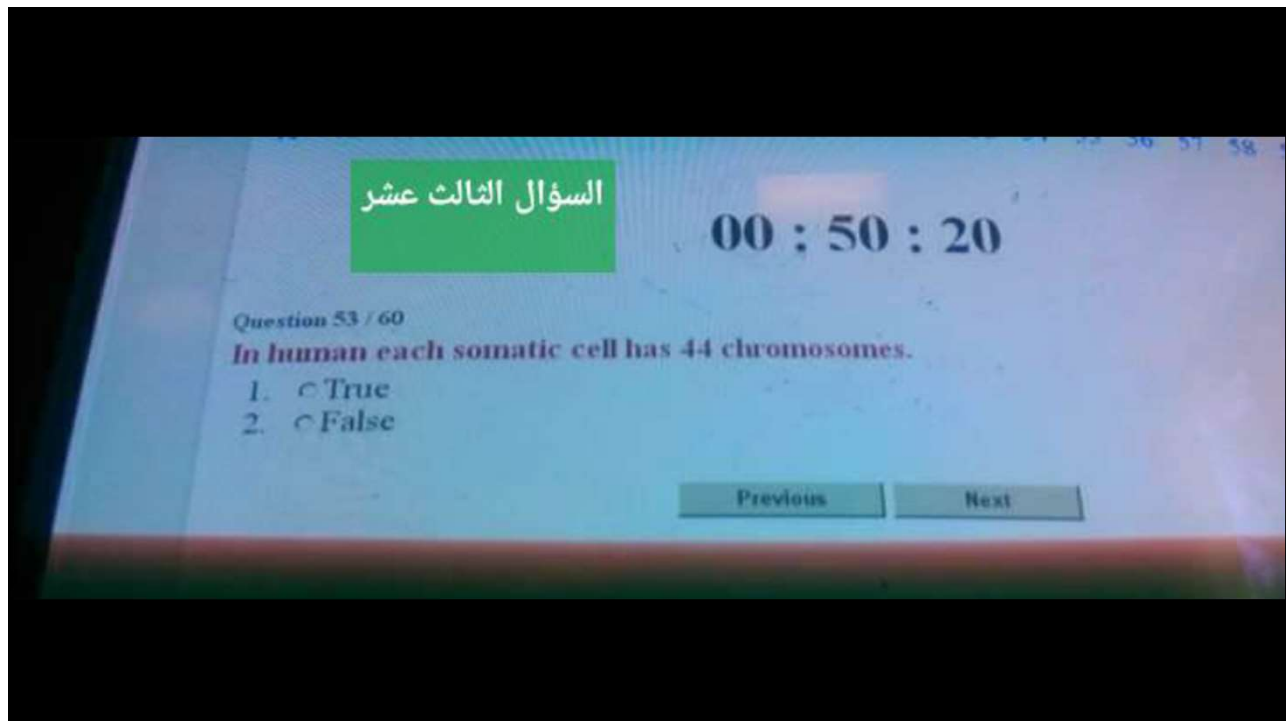
12

Q 12



13

Q 13



14

Q 14

السؤال 14

01 : 7 : 54

Question 46 / 60

In human the ovum (egg cell) has 23 chromosomes ; 22 autosomes and one x or y chromosome

1. True
2. False

Previous Next

15

Q 15

السؤال 15

سؤال 34 / 50

مبر هذا السؤال

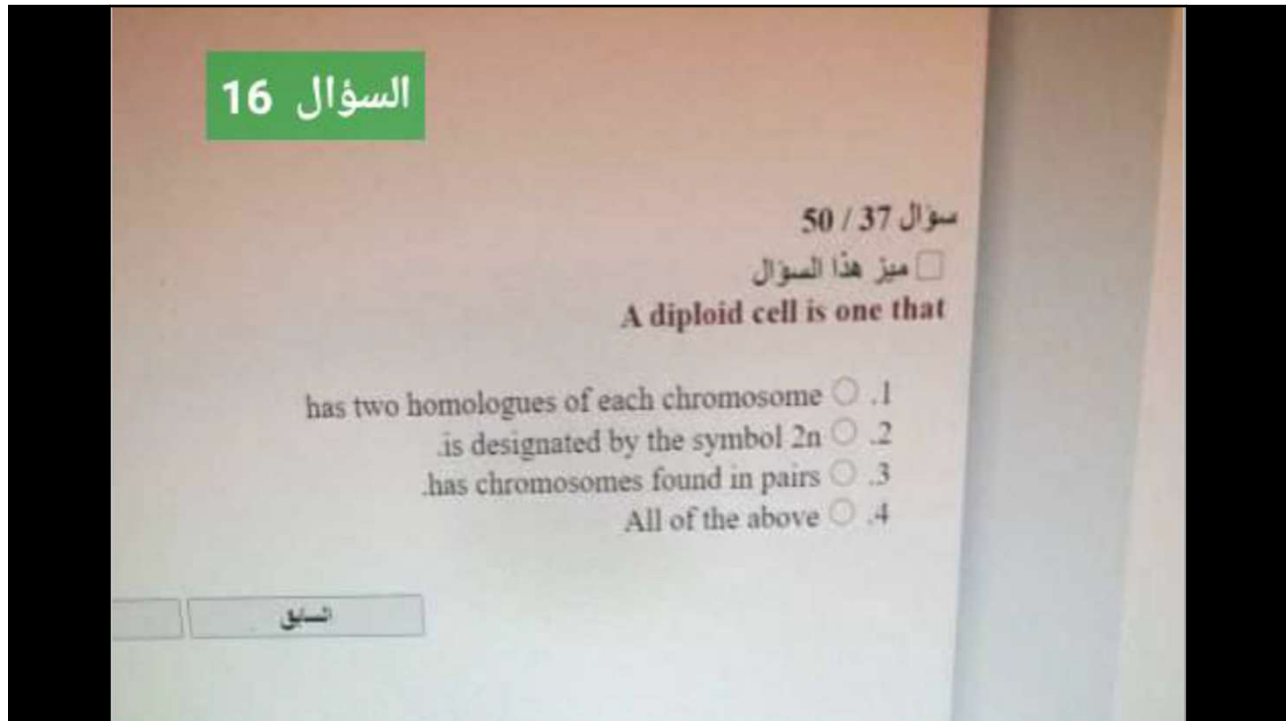
of the following occur during prophase of mitosis in animal cells EXCEPT

1. chromosomes are duplicated
2. the spindle bigns to organize
3. the centrioles move toward opposite poles
4. the nucleolus can no longer be seen
5. the nuclear envelope disappears

التالي السابق

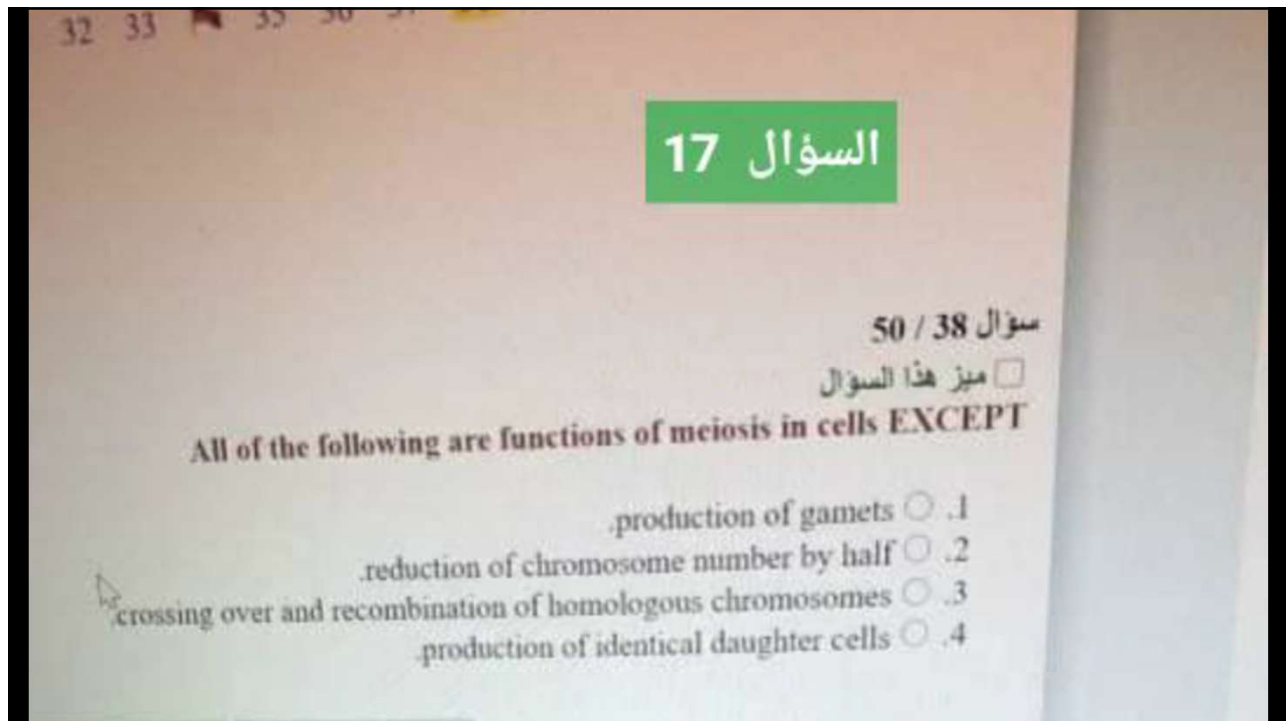
16

Q 16



17

Q 17



18

Q 18

السؤال 18

سؤال 50 / 40

ميز هذا السؤال

Gametes are the only types of human cells produced by meiosis, rather than mitosis

True .1
False .2

التالي السابق

19

Q 19

السؤال 19

سؤال 50 / 39

ميز هذا السؤال

..... The 22 pairs of chromosomes that do not determine sex are called

homologs .1
karyotypes .2
somatic .3
autosomes .4

التالي السابق

20

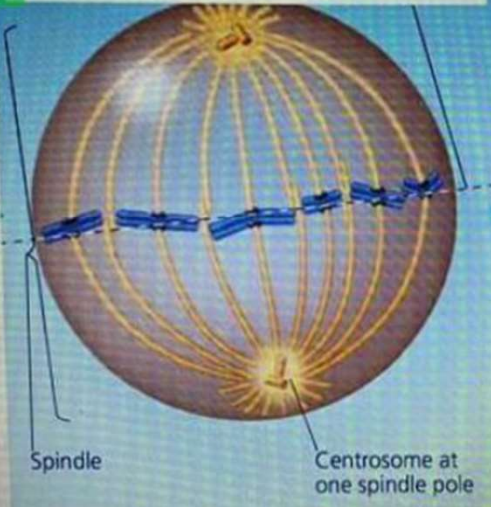
Q 20

سؤال 20 / 33

مميز هذا السؤال

السؤال 20

?At what part of the cell cycle would you see a chromosome that looks like this



metaphase .1
S phase .2
telophase .3
anaphase .4

Spindle

Centrosome at one spindle pole

التالي السابق

21

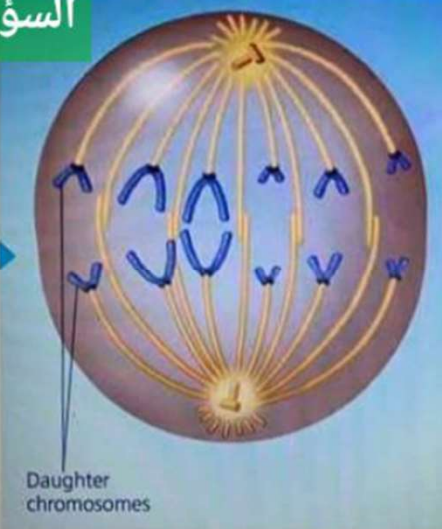
Q 21

سؤال 21 / 33

مميز هذا السؤال

السؤال 21

?What phase of mitosis is pictured at right



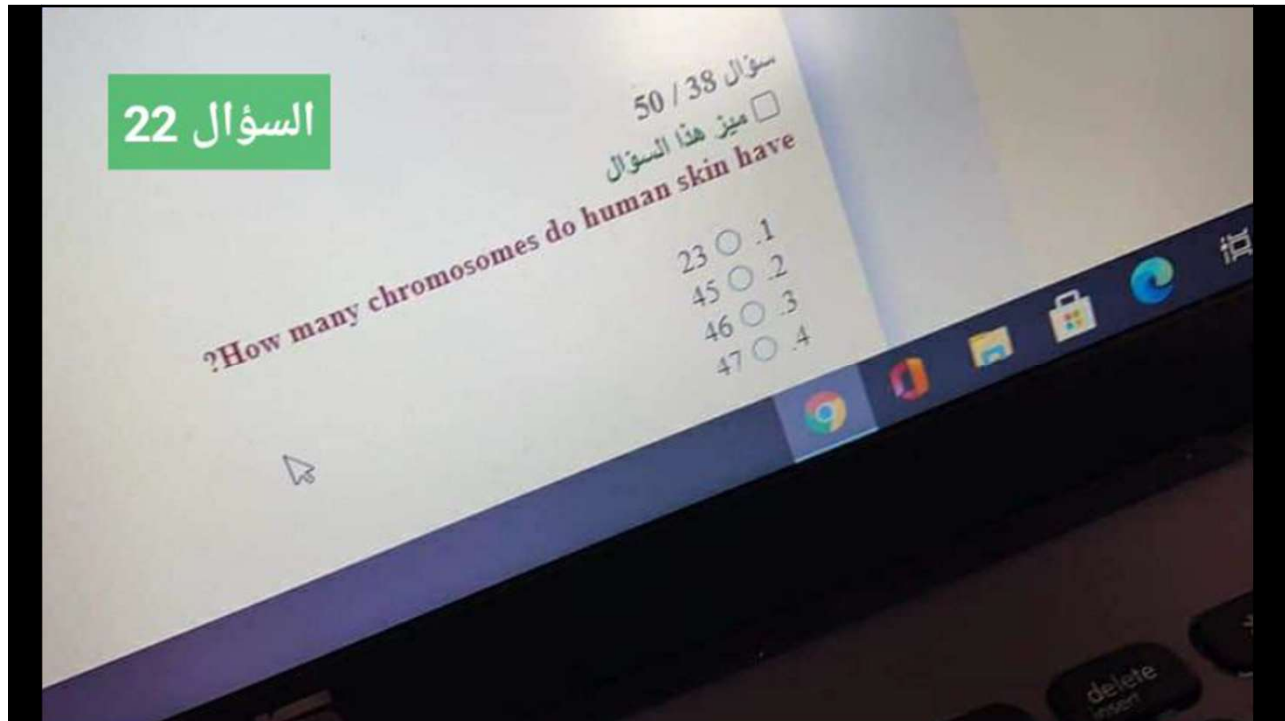
prophase .1
metaphase .2
anaphase .3
telophase .4

Daughter chromosomes

التالي التالي

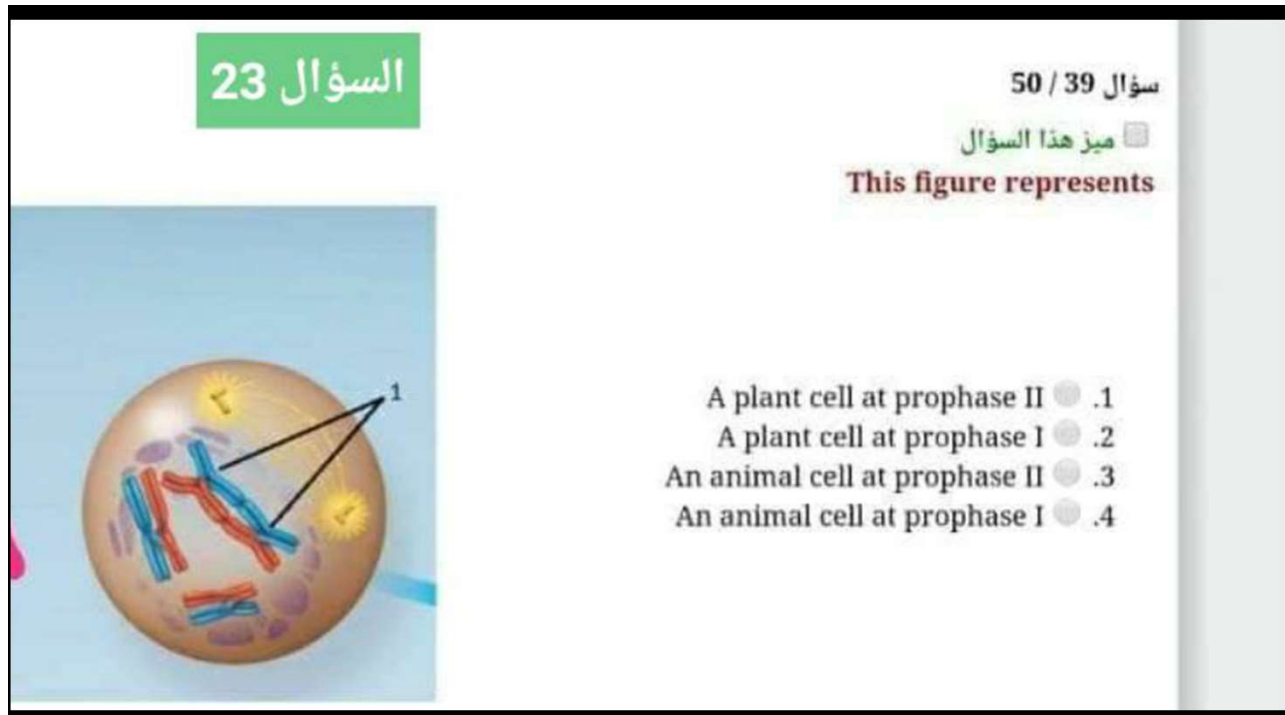
22

Q 22



23

Q23



24

Q 24

49 50

السؤال 24

سؤال 50 / 38

مميز هذا السؤال

Meiosis is a cellular division that produces

1. Two genetically identical daughter cells

2. Four genetically identical daughter cells

3. Two genetically nonidentical daughter cells

4. Four genetically nonidentical daughter cells

التالي السابق

25

Q 25

7 8 10 11 12 13 14 16 17 18 19 20

27 28 29 30 31 32 33 34 35 36 37 38 39 40

47 48 49 50

السؤال 25

سؤال 50 / 40

مميز هذا السؤال

.In the second cell division (meiosis II), homologous chromosomes separate

1. True

2. False

التالي السابق

26

Q 26

24 25 26 27 28 29 30 31 32 33 34 35 36 37 38 39 40
44 45 46 47 48 49 50

1 : 52

السؤال 26

سؤال 50 / 37

ميز هذا السؤال

?Which of the following is TRUE of a species that has a chromosome number of $2n = 16$

- .1 .The species is diploid with 32 chromosomes
- .2 .The species has 16 sets of chromosomes
- .3 .There are 8 homologous pairs
- .4 .A gamete from this species has 4 chromosomes

الساعة

27

Q 27

48 49 50

27

سؤال 50 / 34

ميز هذا السؤال

?Which of the following occurs in meiosis but NOT in mitosis

- .1 chromosome replication
- .2 synapsis
- .3 crossing over
- .4 Two answers are correct

التالي السابق

28

Q 28

سؤال 50 / 35

28

مميز هذا السؤال

.....Multicellular organisms depend on cell division for

Growth .1
 Development .2
 cell cycle .3
 Two answers are correct .4

التالي السابق

29

Q 29

سؤال 50 / 33

29

مميز هذا السؤال

Anaphase is characterized by

.division of the centromeres to separate sister chromatids .1
 .migration of the centrioles to opposite poles of the nuclear space .2
 cleavage furrow starts to form .3
 asters disappear .4

التالي السابق

30

س1 (4	س13 (2	س25 (2
س2 (3	س14 (2	س26 (3
س3 (1	س15 (1	س27 (4
س4 (1	س16 (4	س28 (4
س5 (1	س17 (4	س29 (1
س6 (1	س18 (1	
س7 (1	س19 (4	
س8 (4	س20 (1	
س9 (1	س21 (3	
س10 (3	س22 (3	
س11 (2	س23 (4	
س12 (4	س24 (4	

31

دعواتكم لمن أسهم في هذا العمل

32

- ضاعت الأحلام واندثرت الأمنيات والصّمت
عمّ المكان

شهداء العلم والمعرفة
إلى جنّات الخلد
اللهمّ ارحم طُلاب جامعة العلوم والتكنولوجيا



#الدعاء_اليومي..

اللهم إني أستودعك أهل غزة ، اللهم كُنْ لهم عوناً ، اللهم إنا لا نملك لغزة إلا الدعاء فيارب لا ترد لنا دعاء ولا تخيب لنا رجاء وأنت أرحم الراحمين ...

اللهم احفظ فلسطين وأهلها .. اللهم كن لأهلنا هناك عوناً ومعيناً ..
وللمسجد الاقصي حافظاً واميناً .. اللهم إنا نستودعك غزة فأحفظها
بحفظك يا خير الحافظين ...