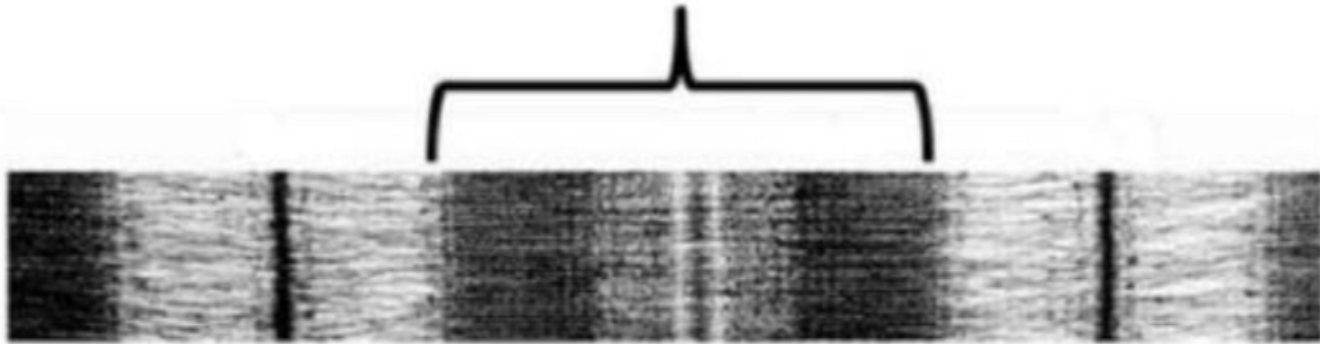




Scientific team

Histology Quiz

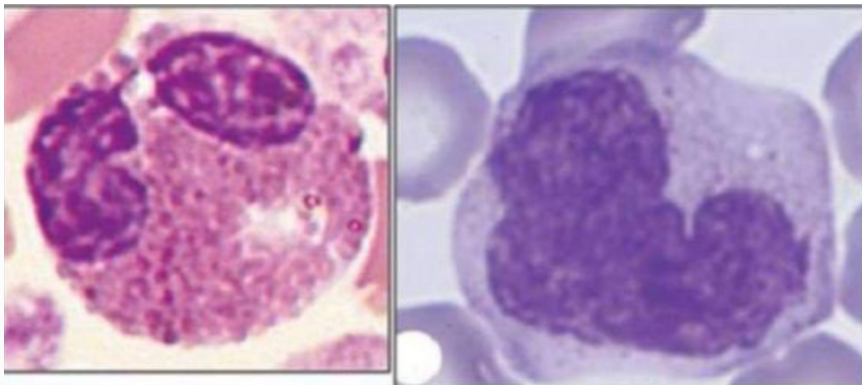
1- the area indicated in the image is the ?



- A- A band
- B- I band
- C- H zone
- D- sarcomere
- E- Z disc

ANSWER: A

2- the cells shown are :



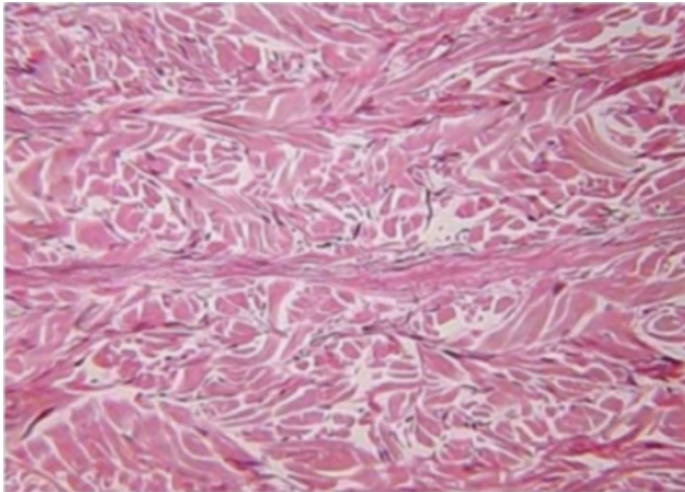
- A- neutrophil and basophil
- B- neutrophil and eosinophil
- C- lymphocyte and monocyte
- D- eosinophil and lymphocyte
- E- eosinophil and monocyte

Answer: E



Scientific team

3- the connective tissue shown is:



- A- smooth muscle
- B- dense collagenous regular connective tissue
- C- reticular connective tissue
- D- dense elastic connective tissue
- E- dense collagenous irregular connective tissue

Answer: E

4-the type of gland shown ?



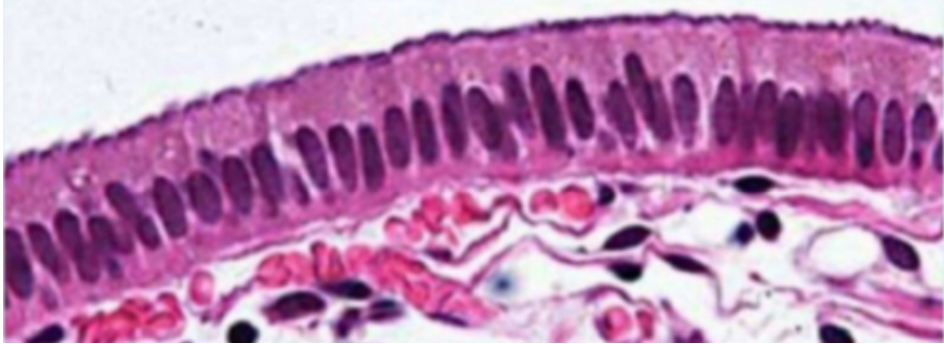
- A- compound unbranched tubular
- B- simple unbranched coiled
- C- simple unbranched tubular
- D- simple branched tubular
- E- simple branched acinar

Answer: D



Scientific team

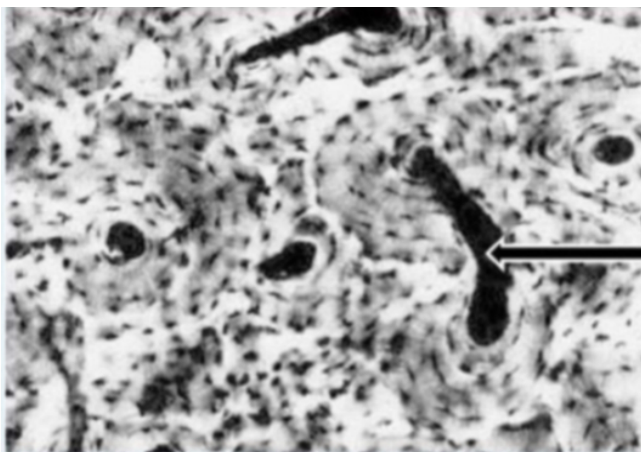
5- in the small intestine, the epithelium shown in the image is covered by



- A- the central canal of the osteon
- B- perforating canal
- C- artifact
- D- lacuna
- E- marrow cavity

Answer: B

6- the structure indicate by the arrow is ?



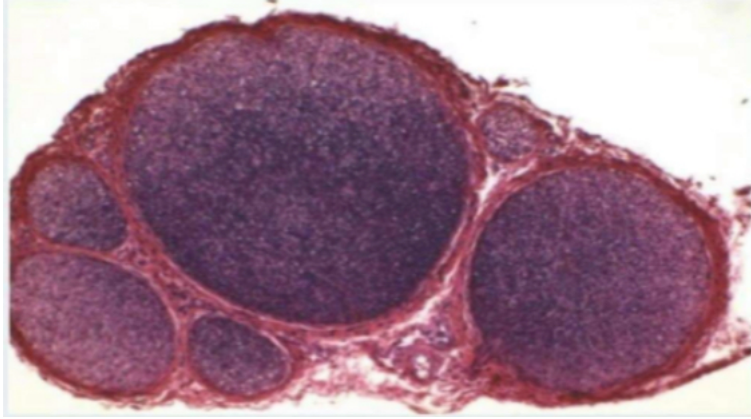
- A- microvilli
- B- cilia
- C- stereocilia
- D- flagella
- E- keratin

Answer: A



Scientific team

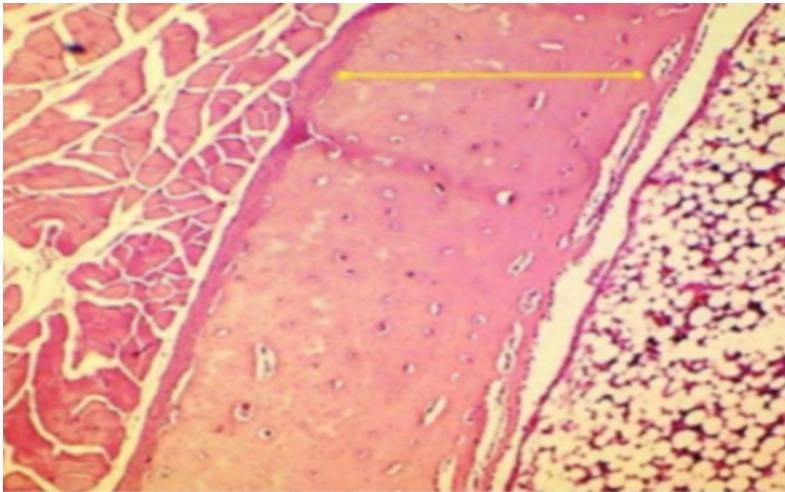
7- the image shows a section through :



- A- dorsal root ganglia
- B- peripheral nerve
- C- cerebrum
- D- cerebellum
- E- autonomic ganglia

Answer: B

8- the part indicated by the yellow line



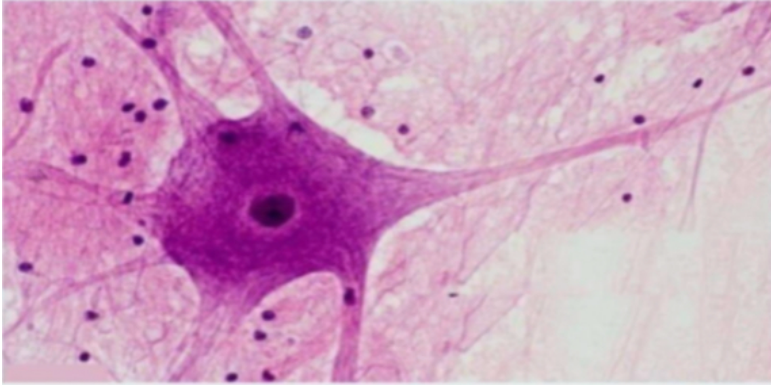
- A- periosteum
- B- skeletal muscle
- C- tendon
- D- spongy bone
- E- compact bone

Answer: E



Scientific team

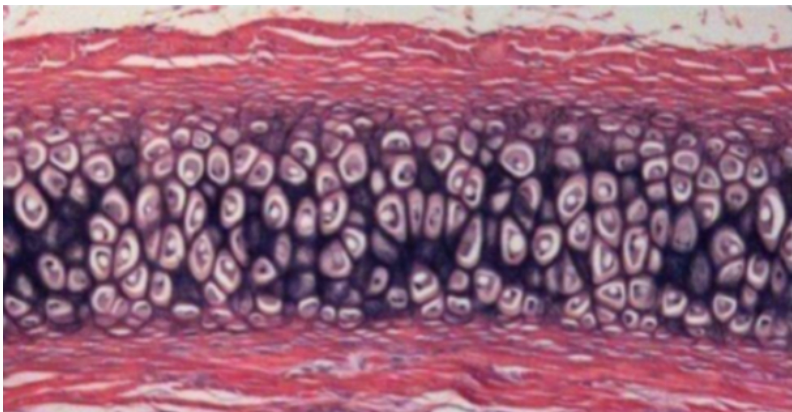
9- the large cel shown is basophilic due to the presence of :



- A- glia cells
- B- microfilaments
- C- Nissl body
- D- mitochondria
- E- cell processes

Answer: C

10- Osmosis exerted by:



- A- auricle of the ear
- B- trachea
- C- epiphyseal plate
- D- symphysis pubis
- E- articular cartilage

Answer: A