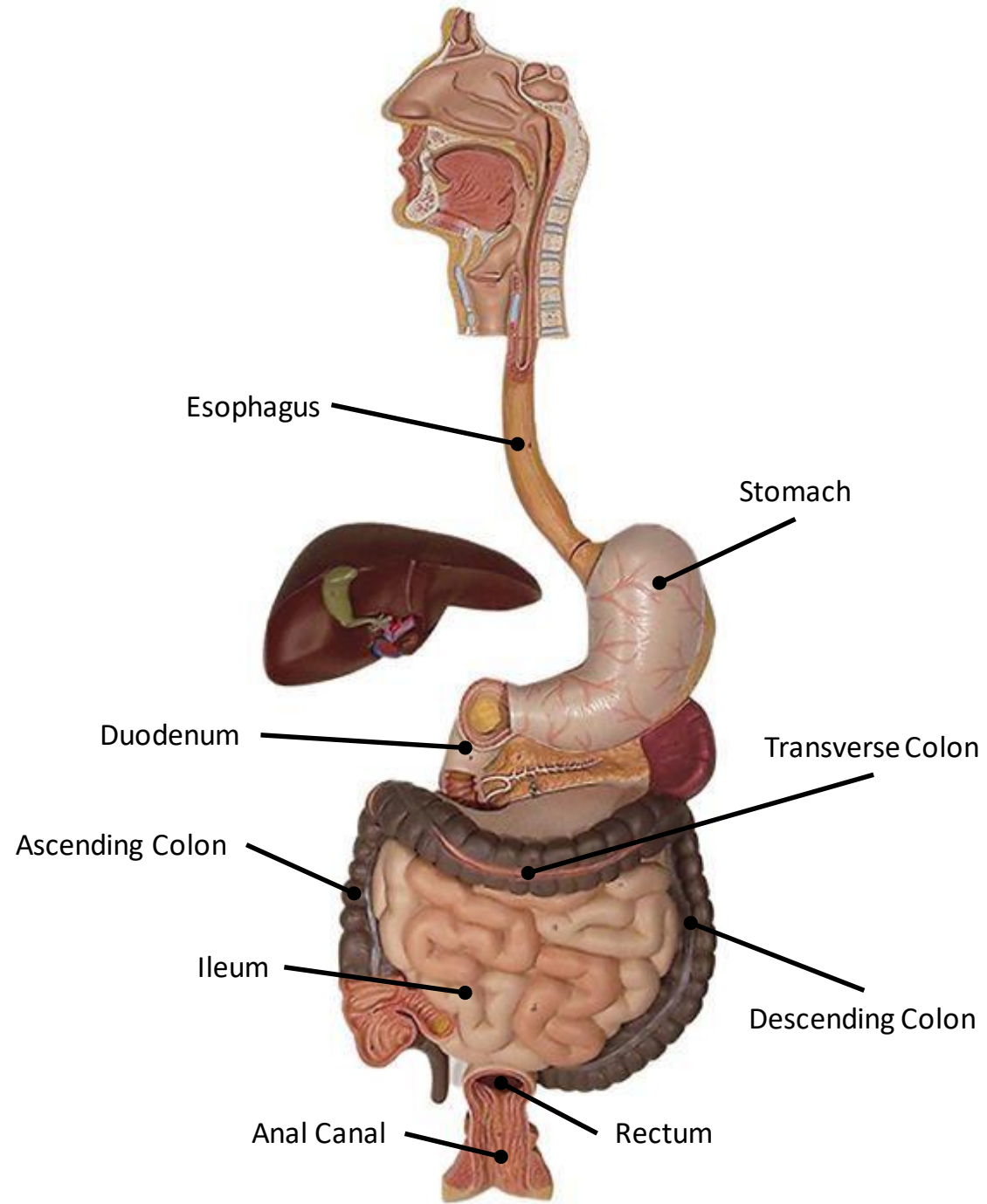
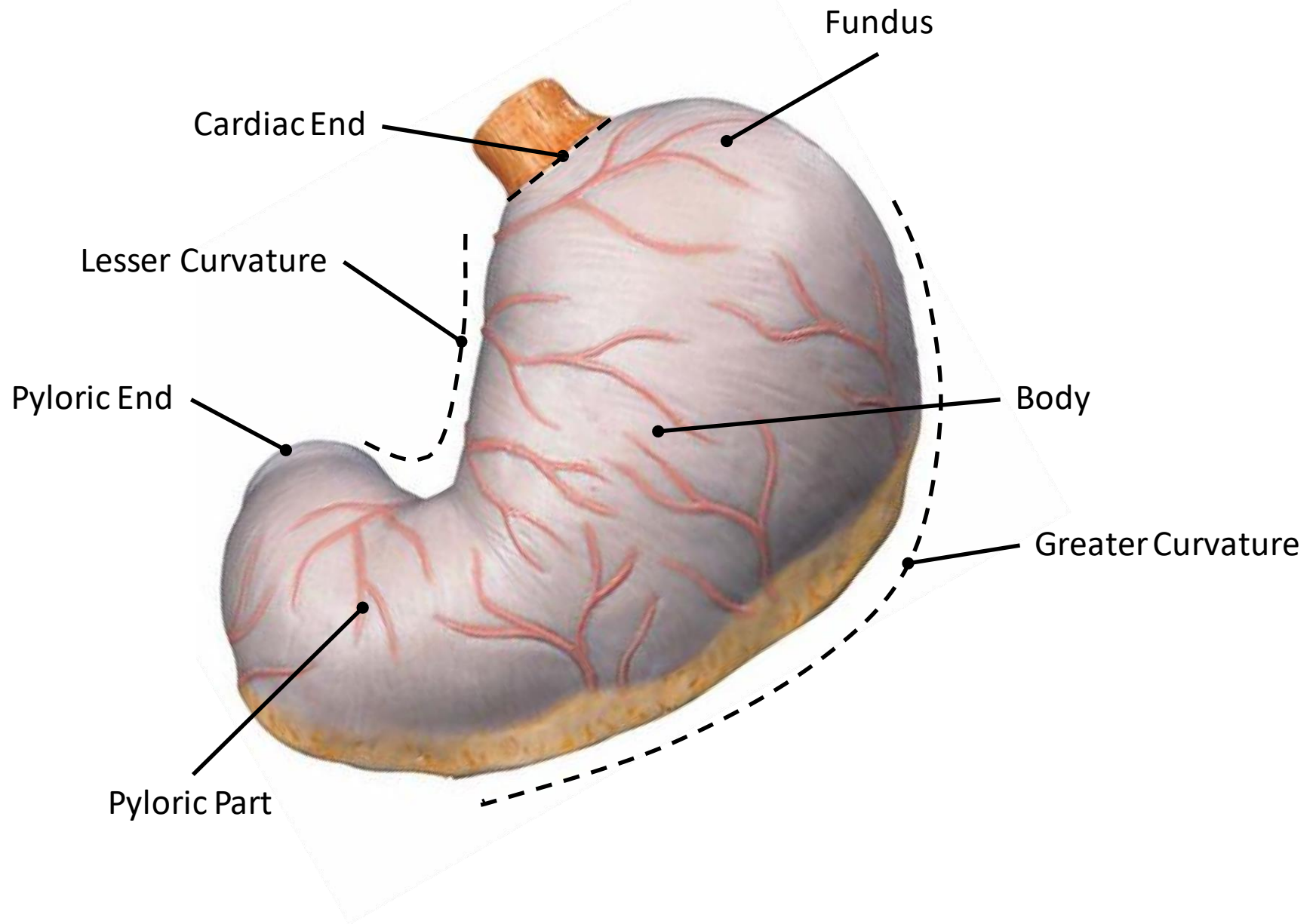
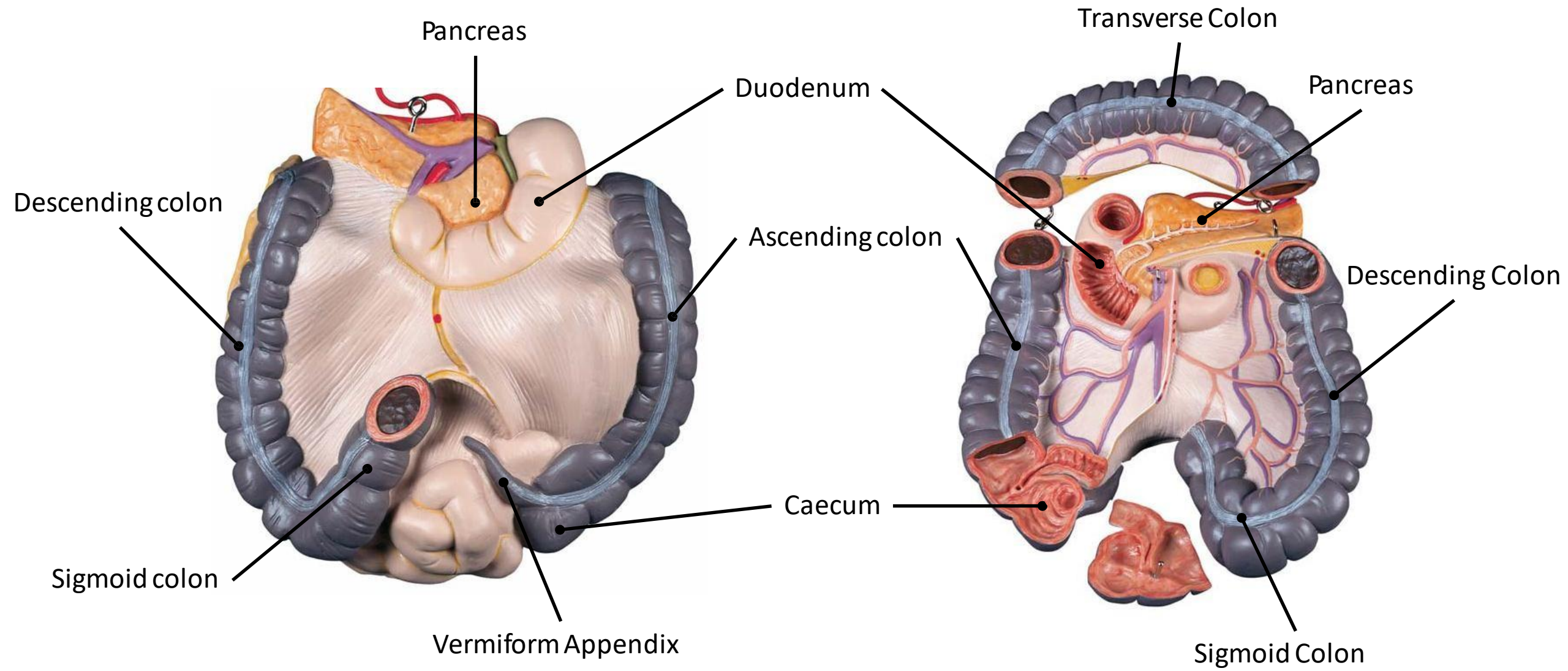


Digestive and Respiratory systems Labs

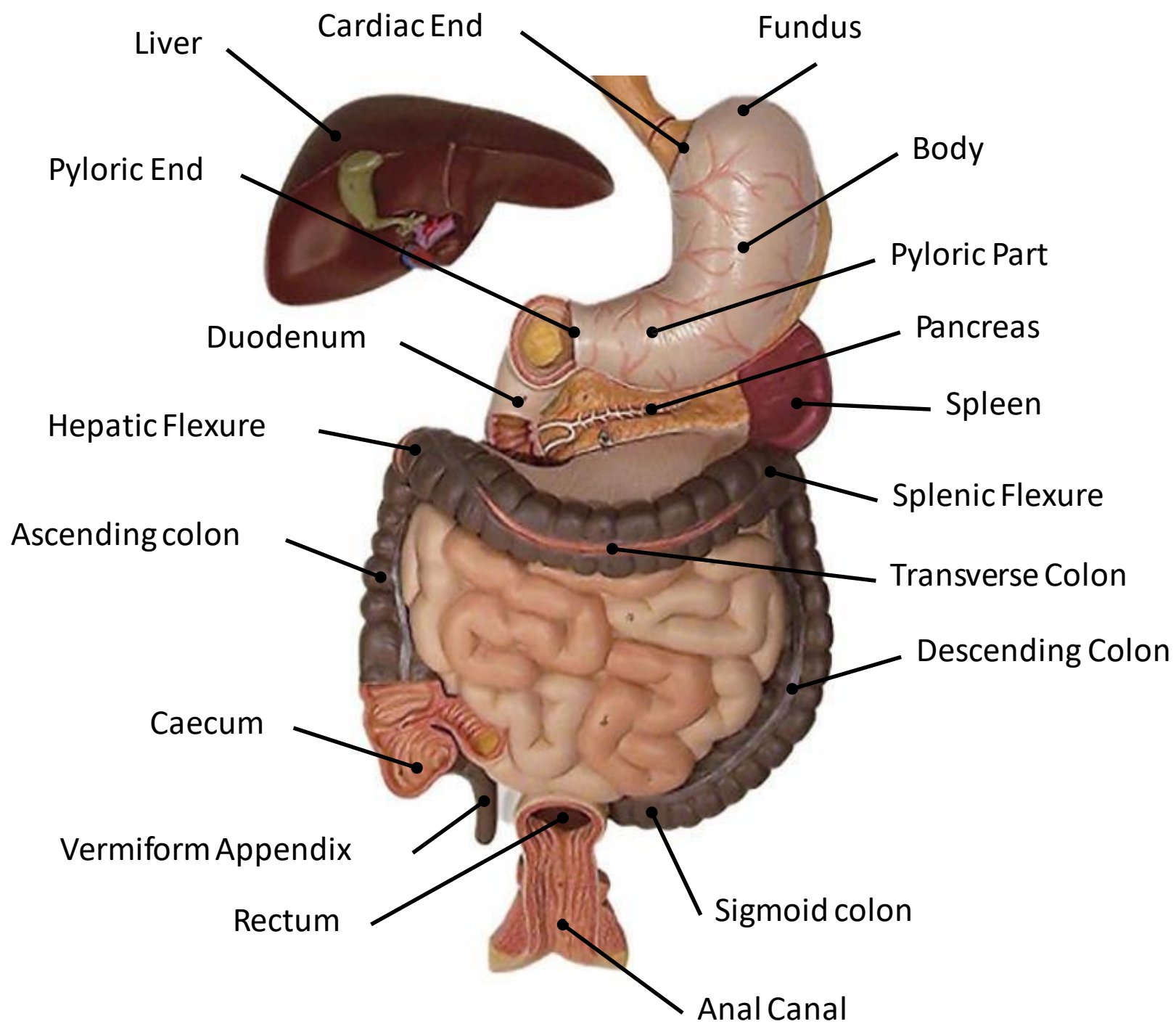
Lab 7

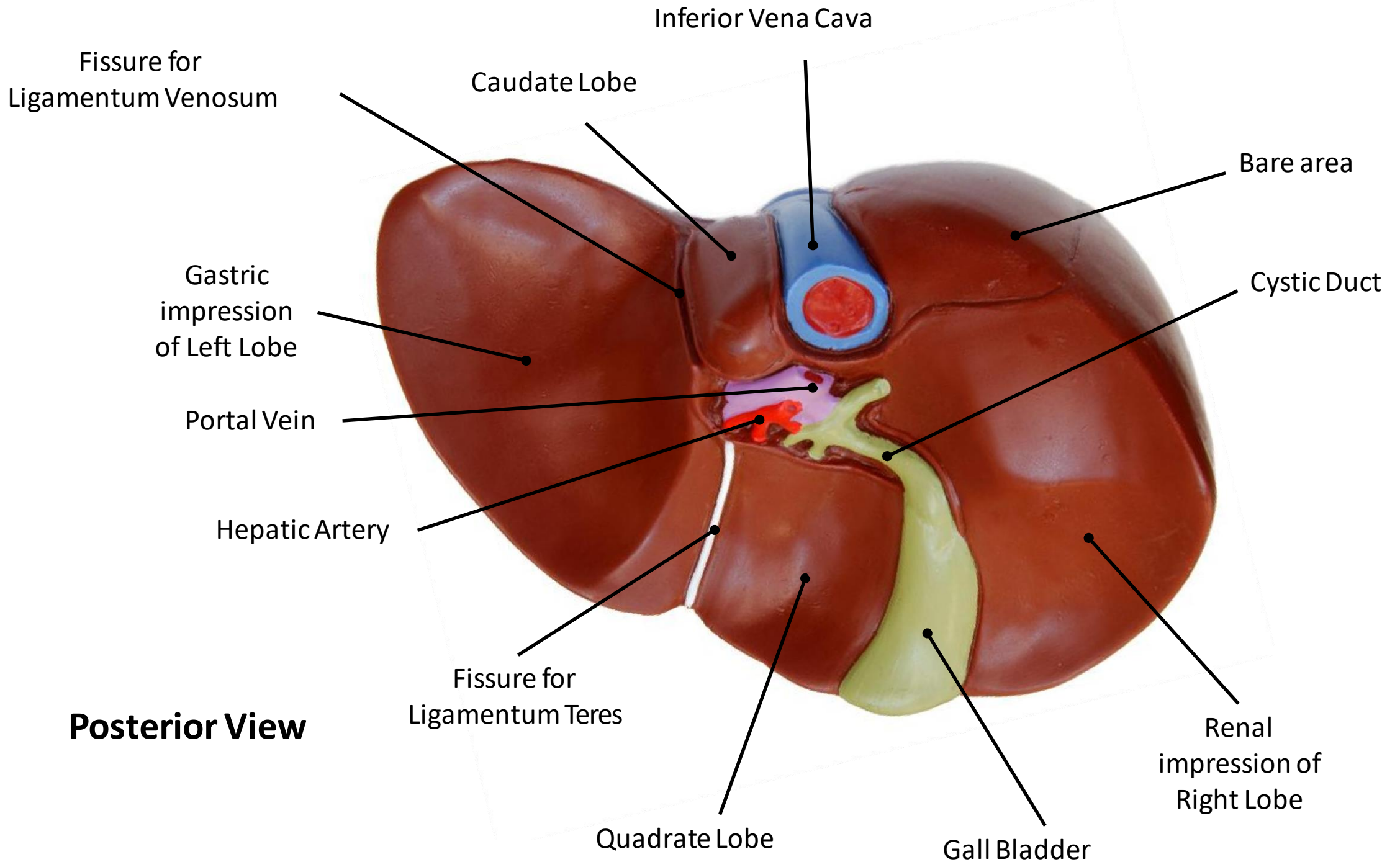


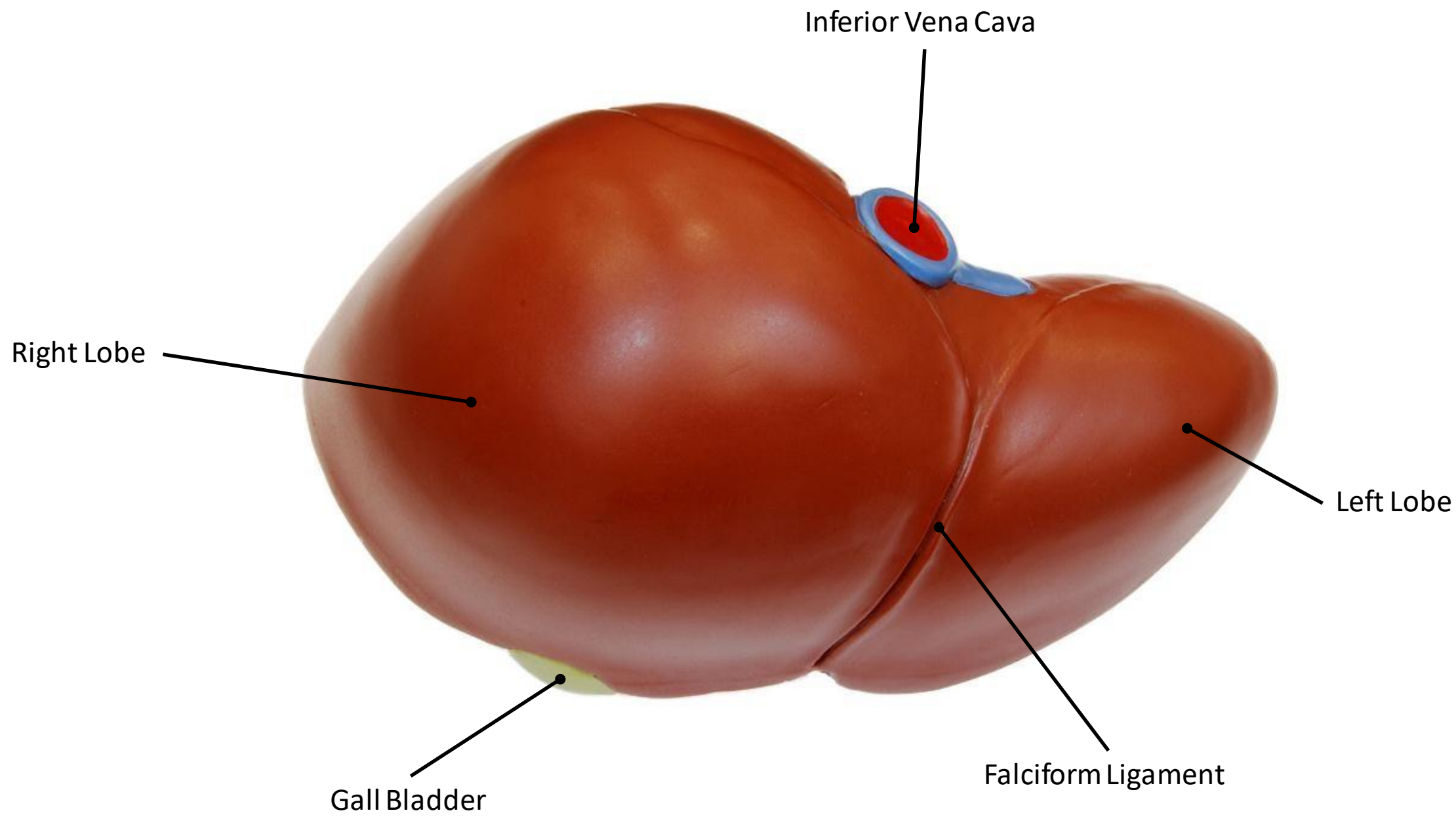




Posterior View







Inferior Vena Cava

Right Lobe

Left Lobe

Gall Bladder

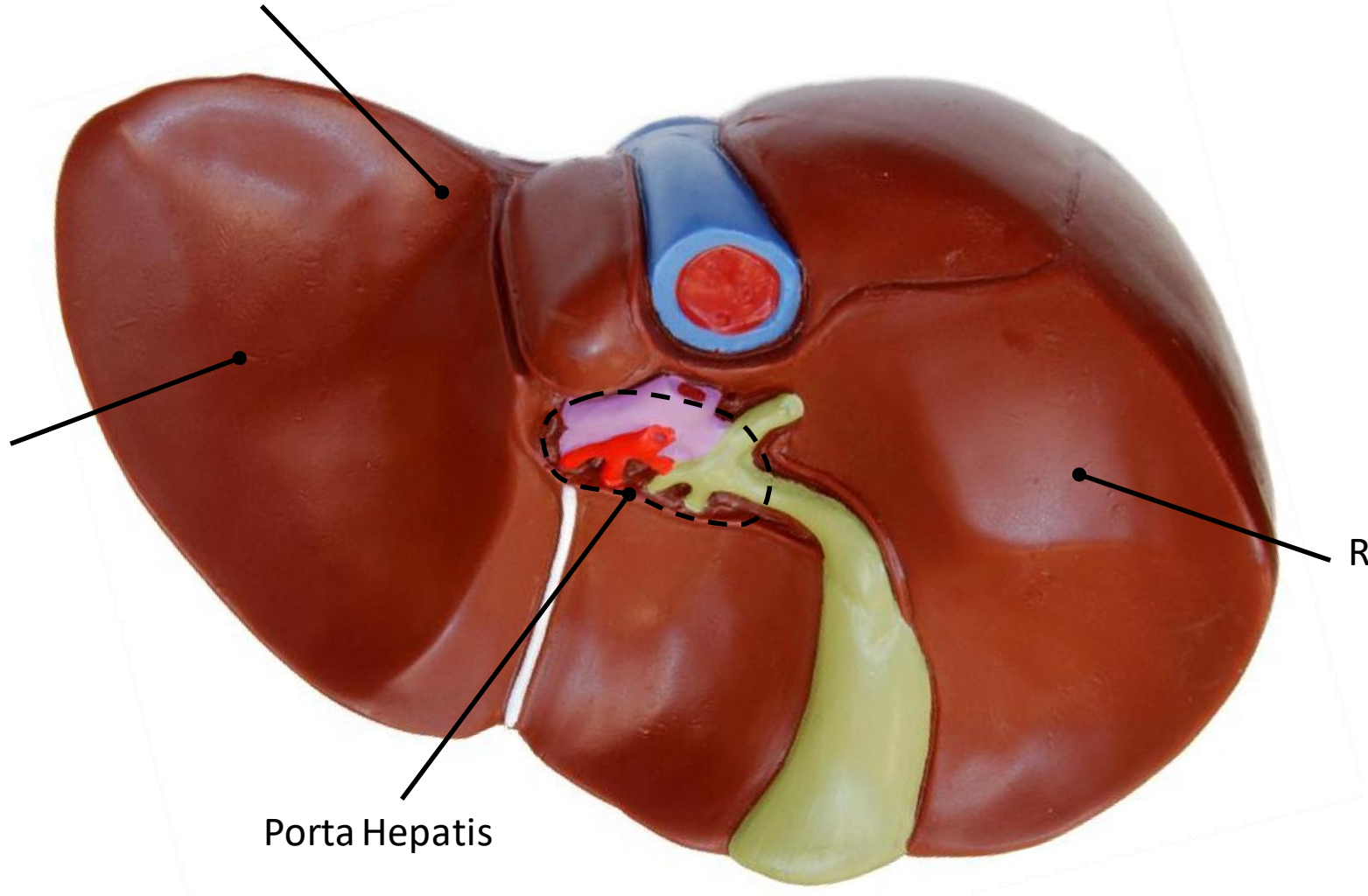
Falciform Ligament

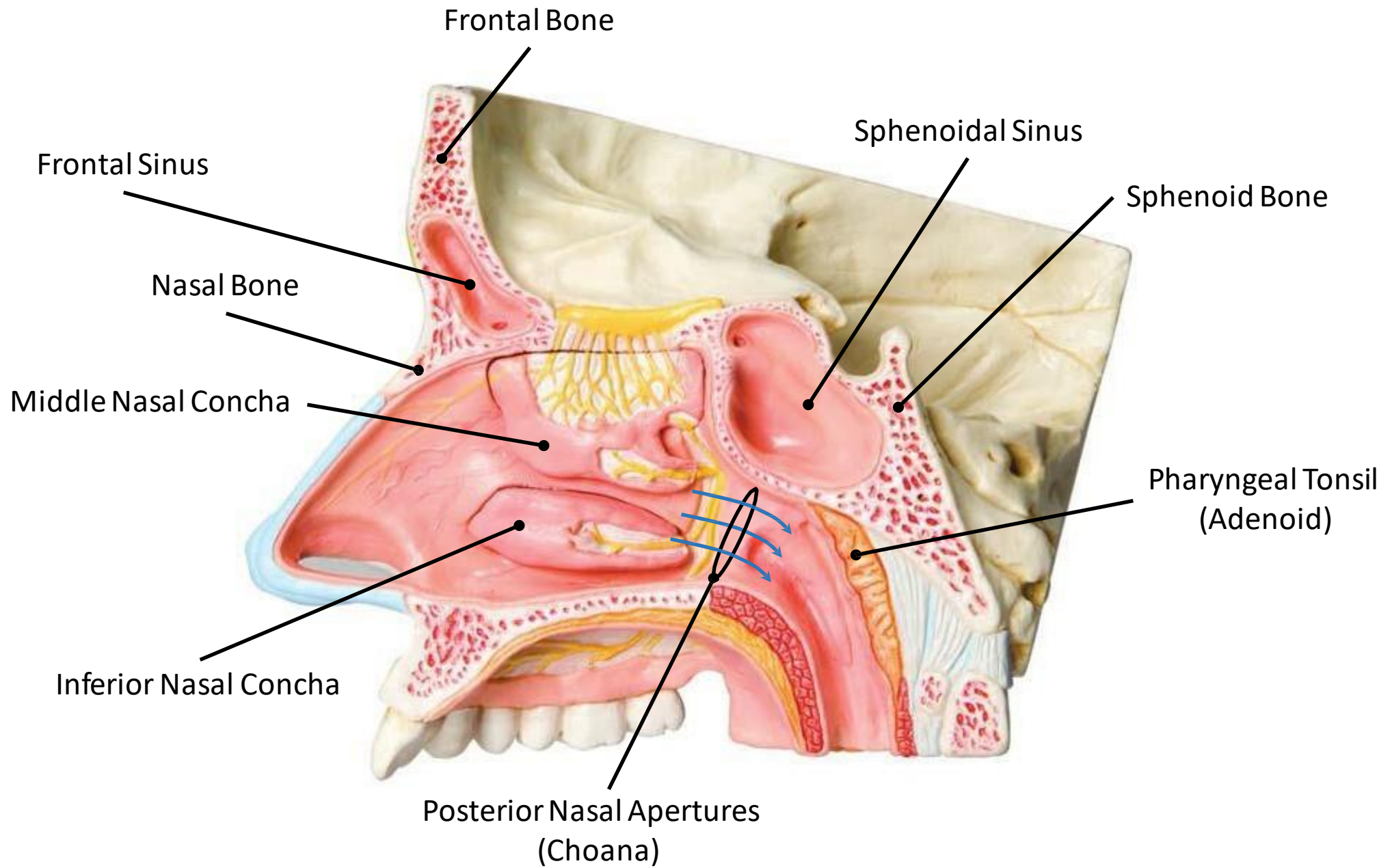
Esophageal Impression

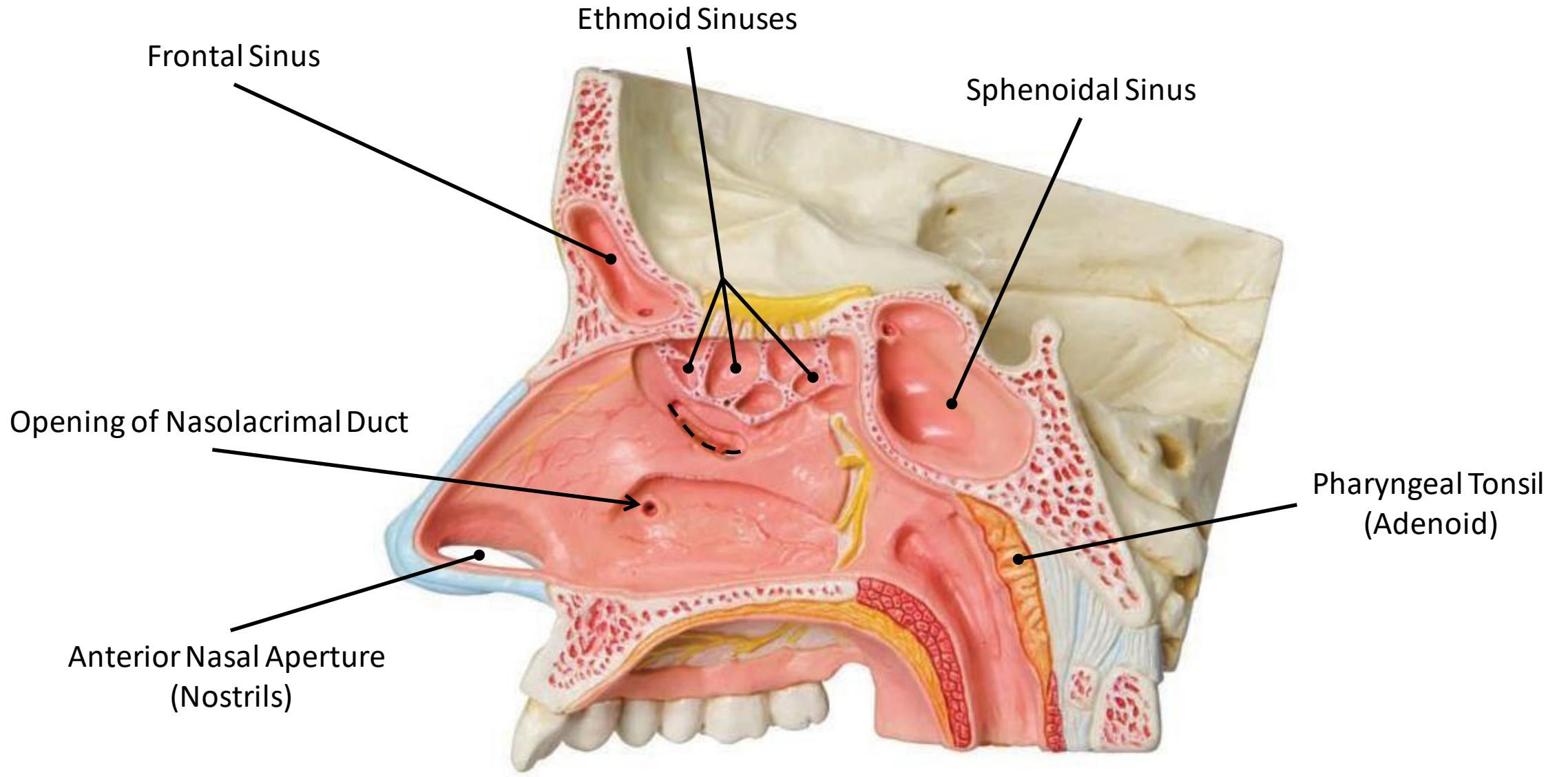
Gastric Impression

Renal Impression

Porta Hepatis







Sphenoid Bone
(Greater Wing)

Frontal Bone

Location of Frontal Sinus

Location of Ethmoid Sinuses

Maxillary Sinus

Maxillary Bone

