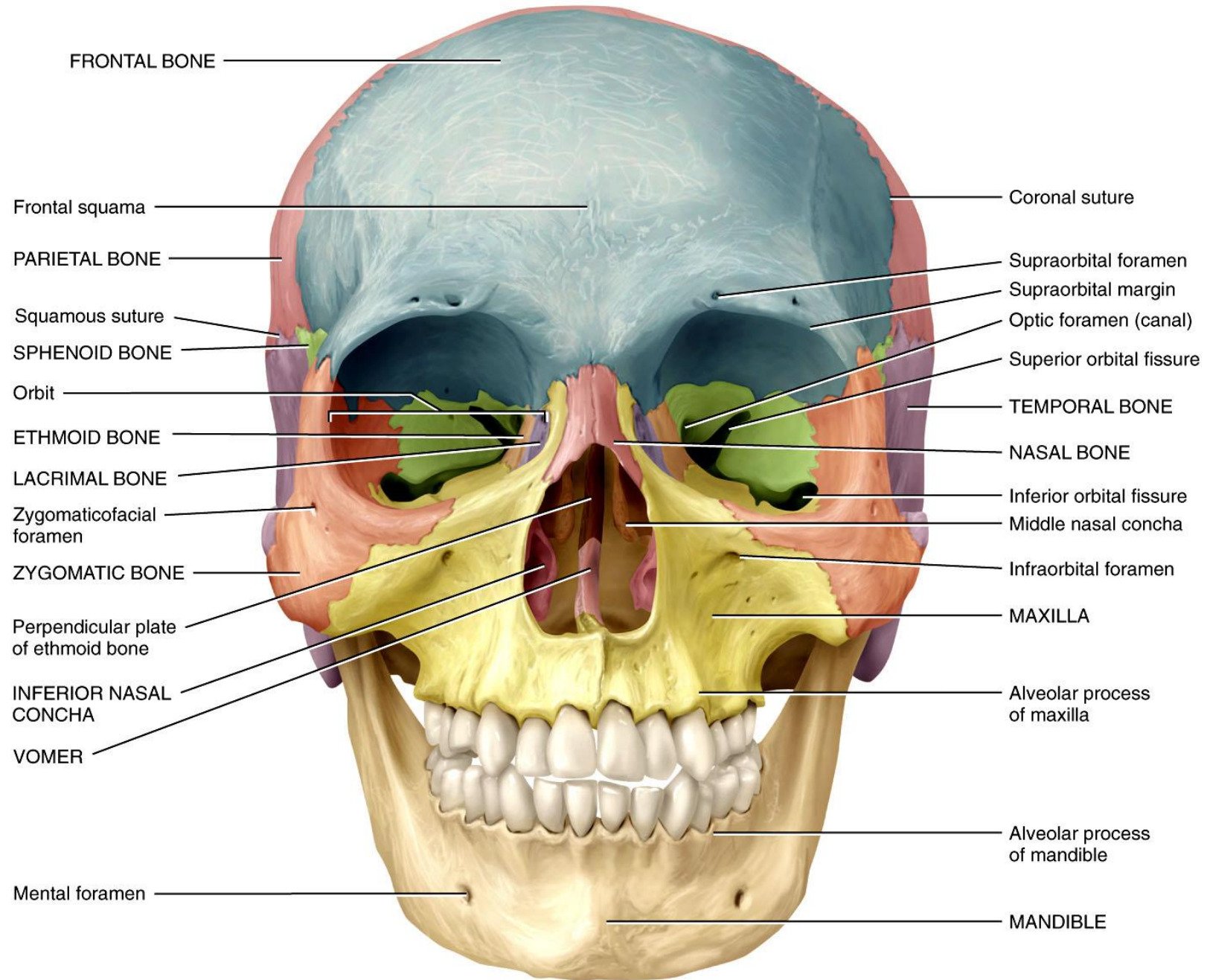
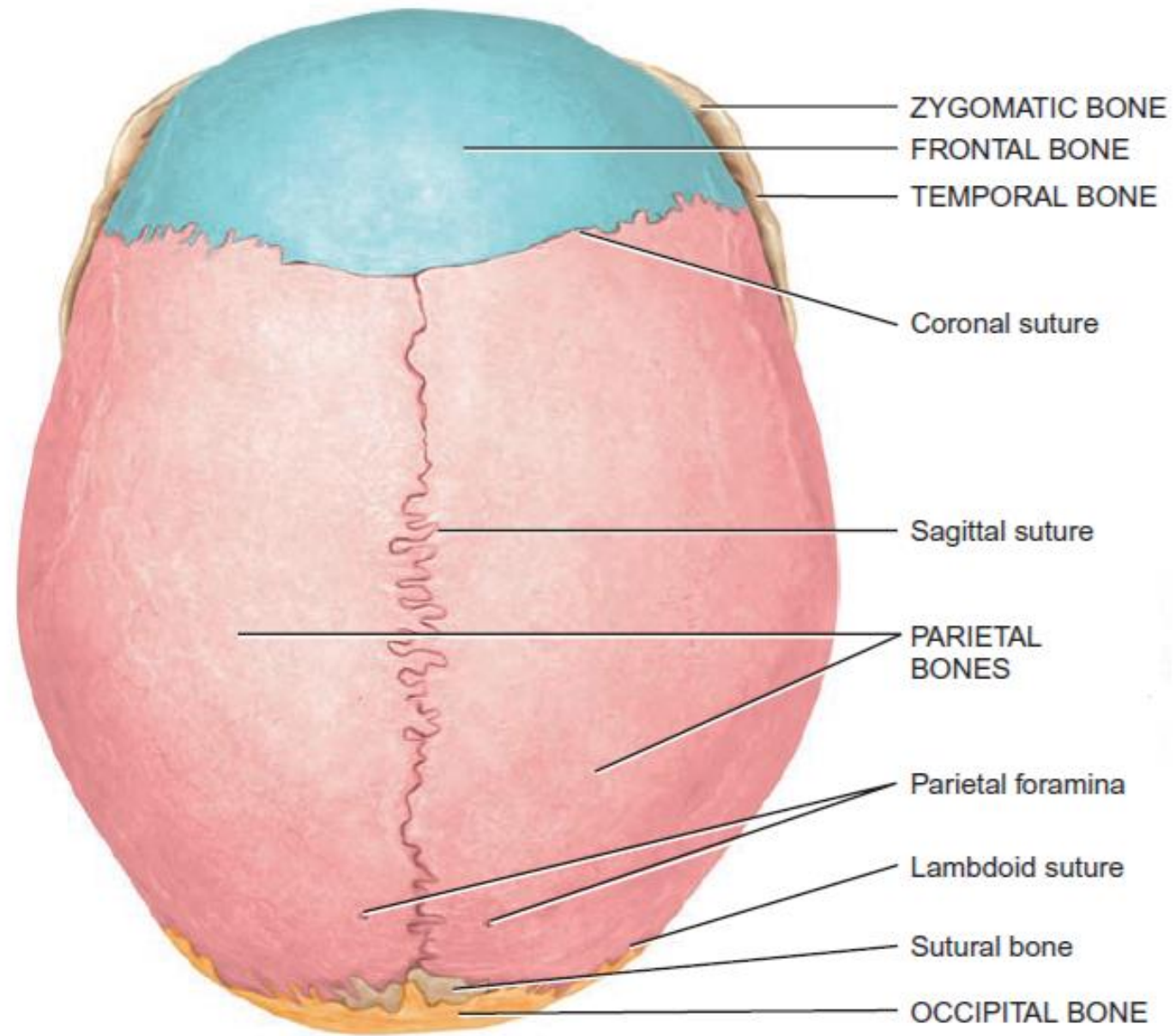


# Anatomy Lab #2

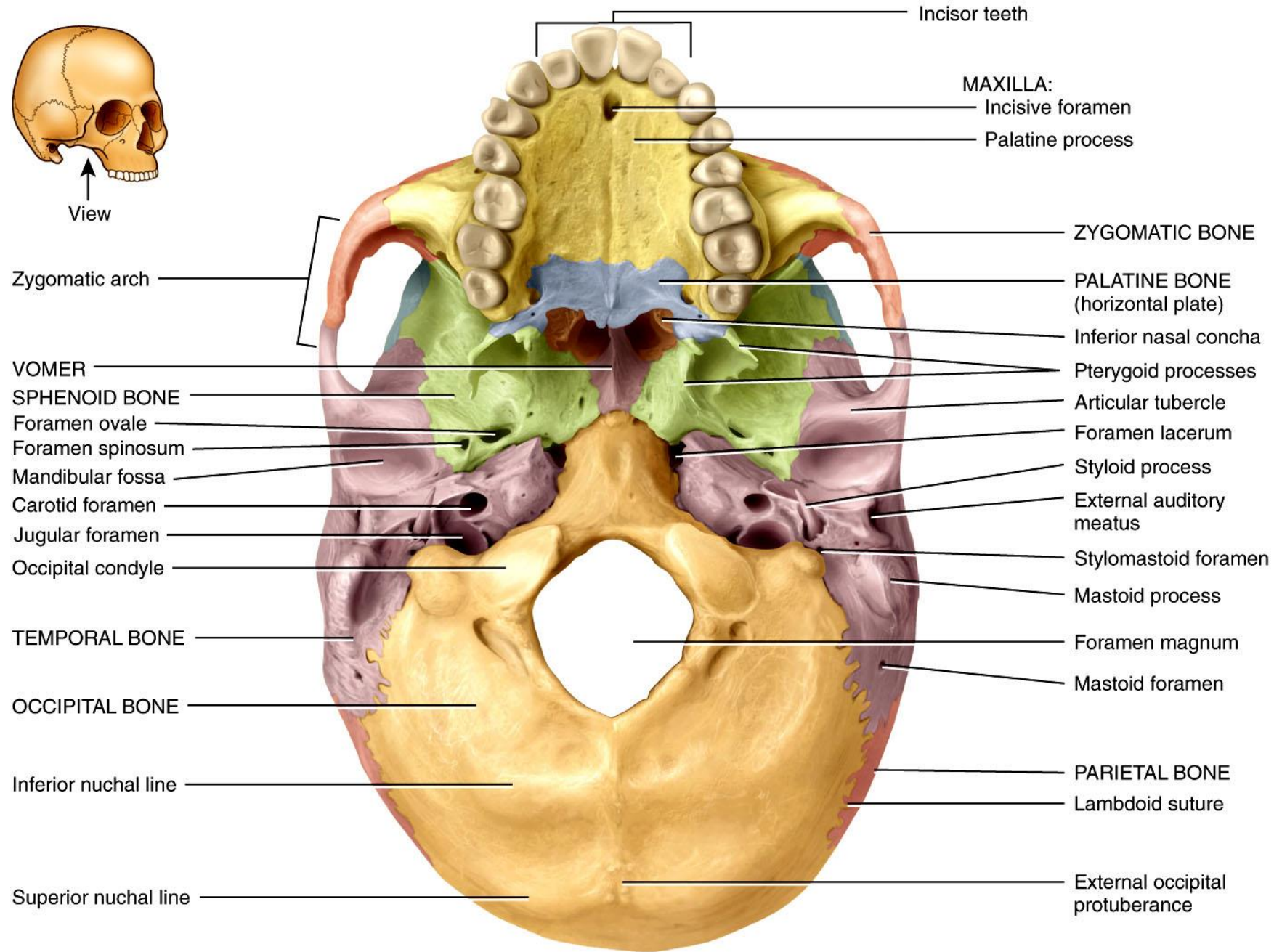
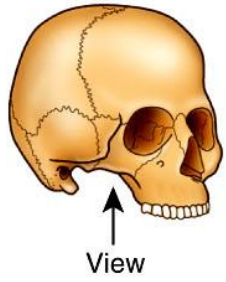
Axial skeleton



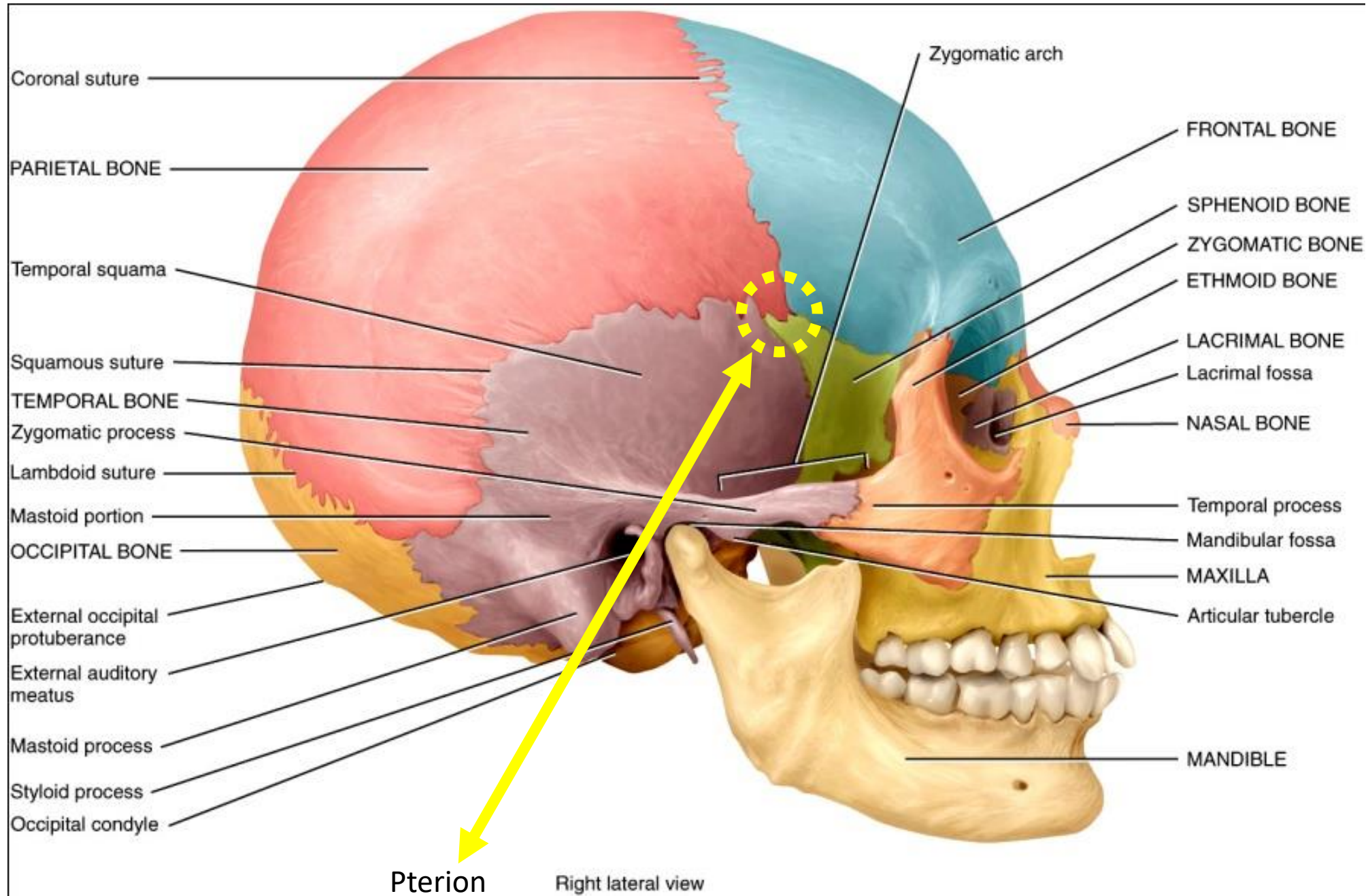
Anterior view

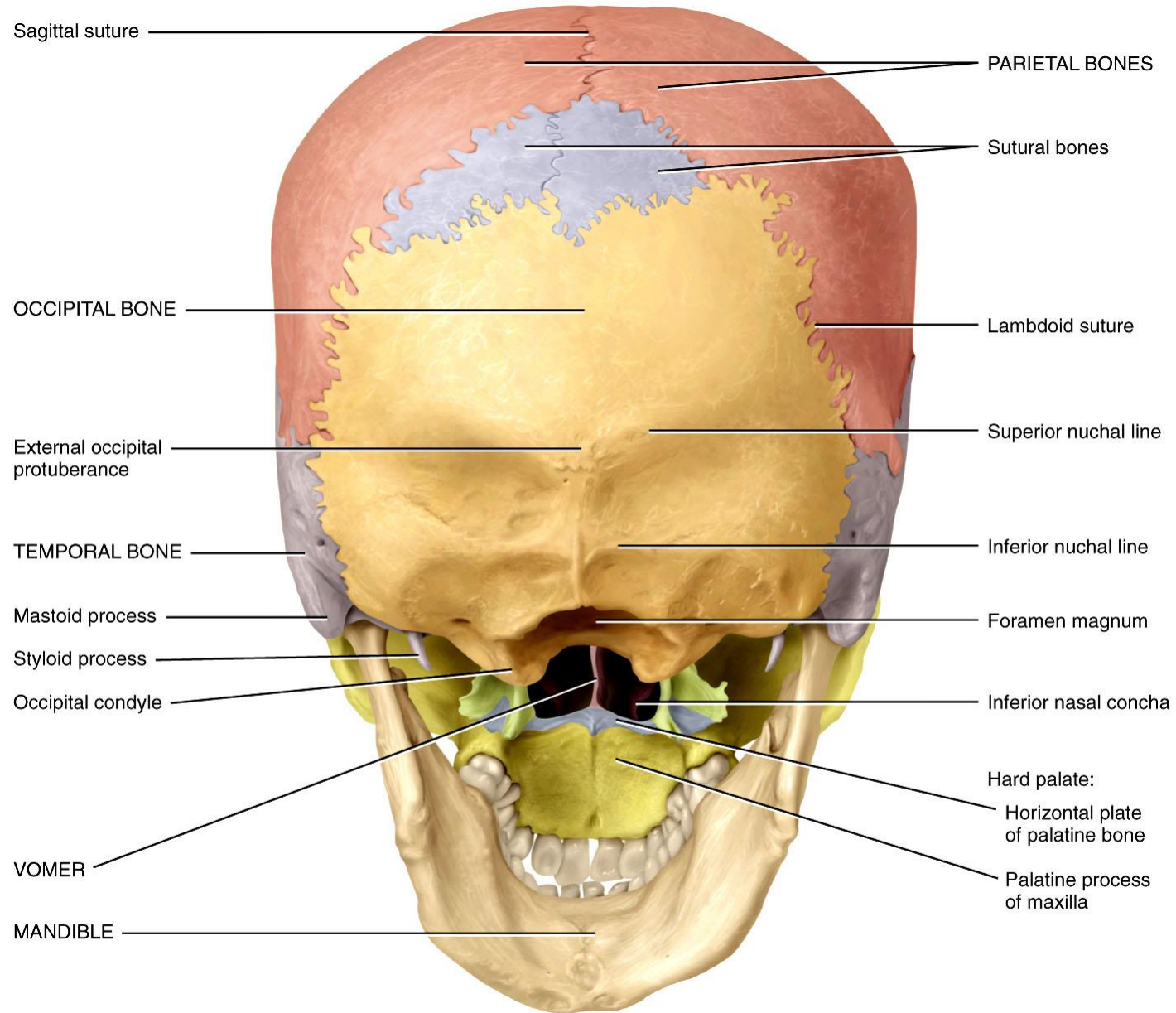


(a) Superior view

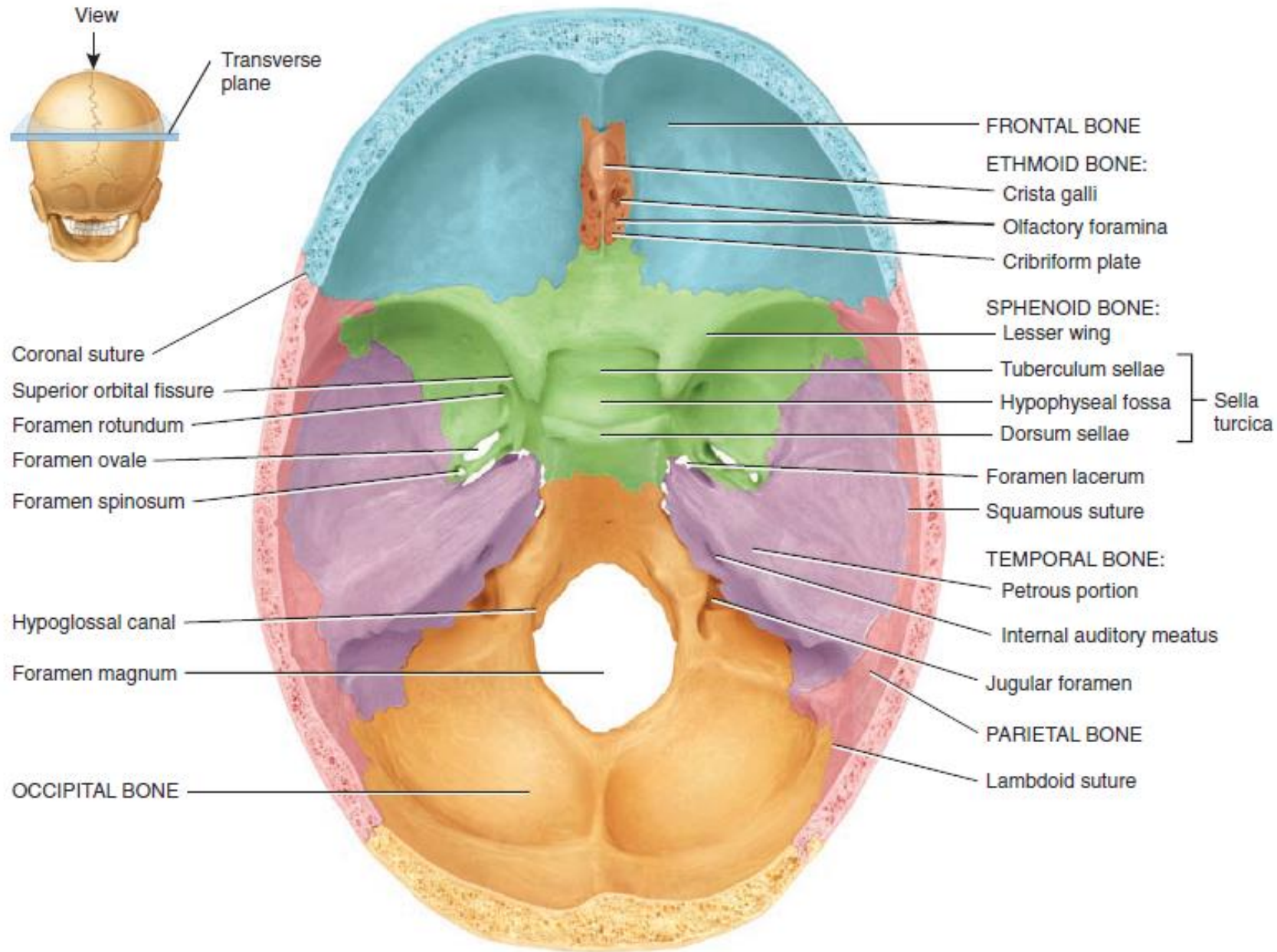


Inferior view



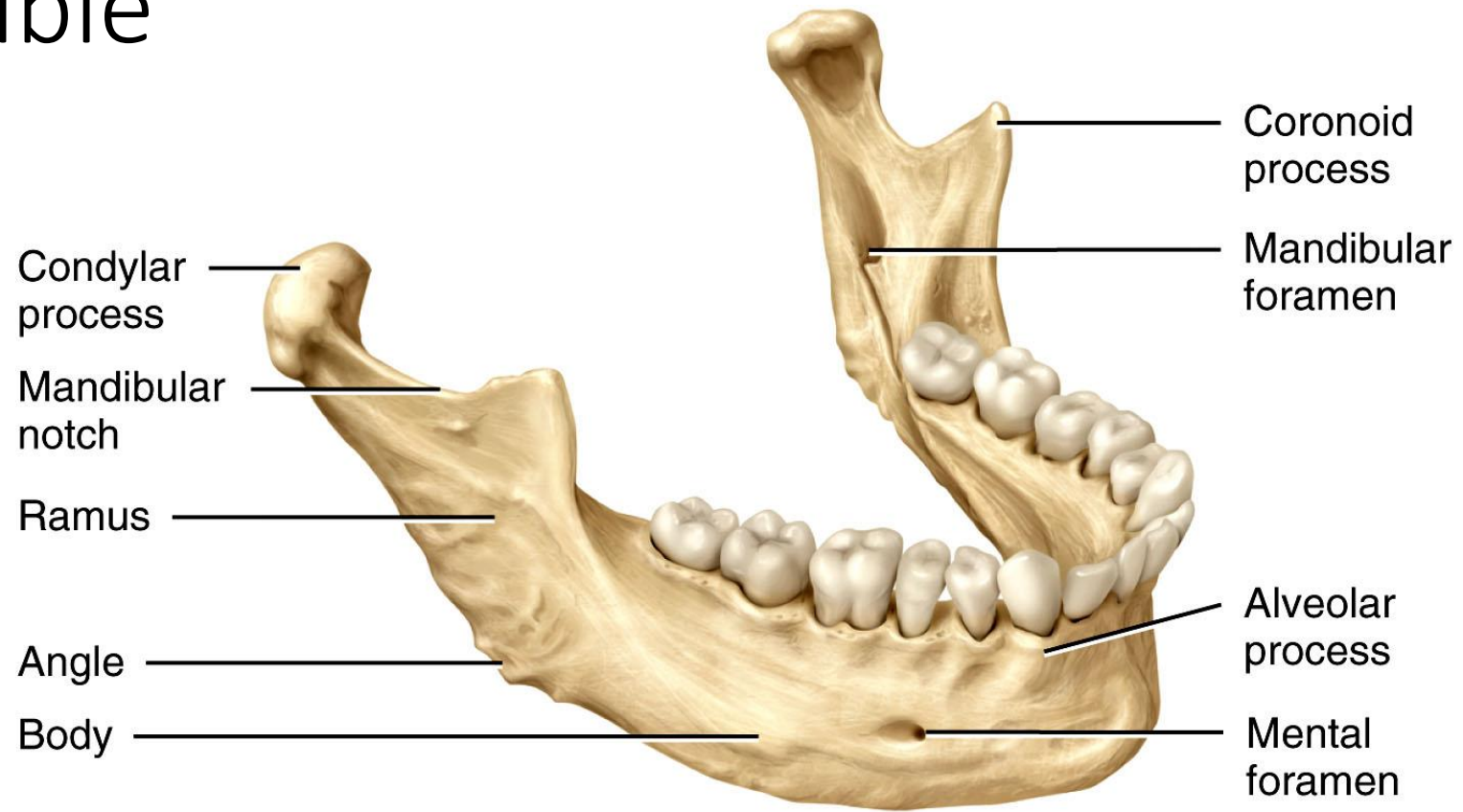


Posteroinferior view



(a) Superior view of sphenoid bone in floor of cranium

# Mandible

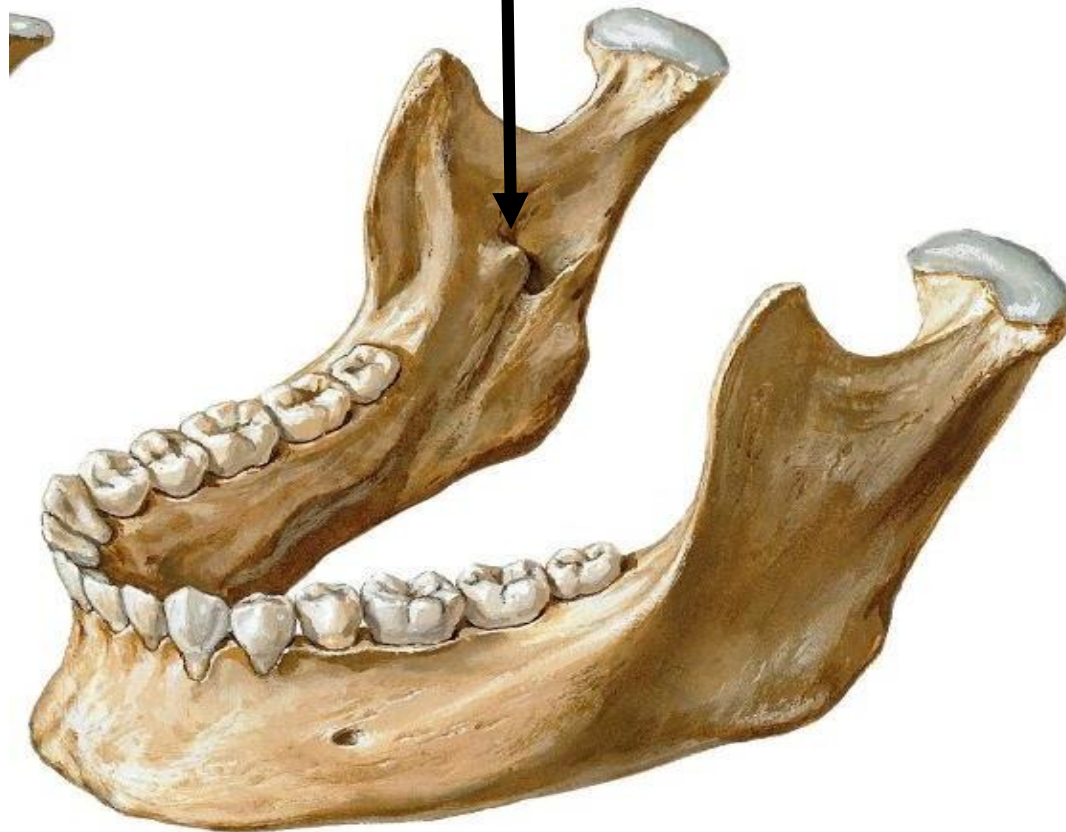


Right lateral view

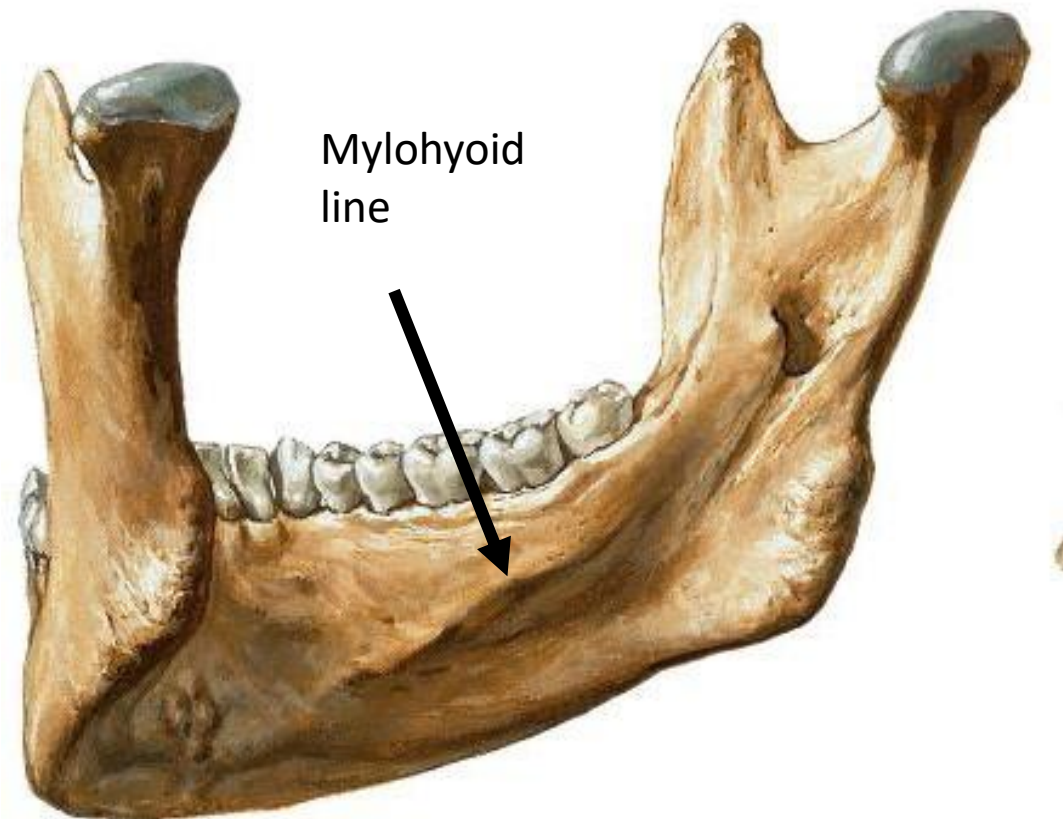


# Mandible

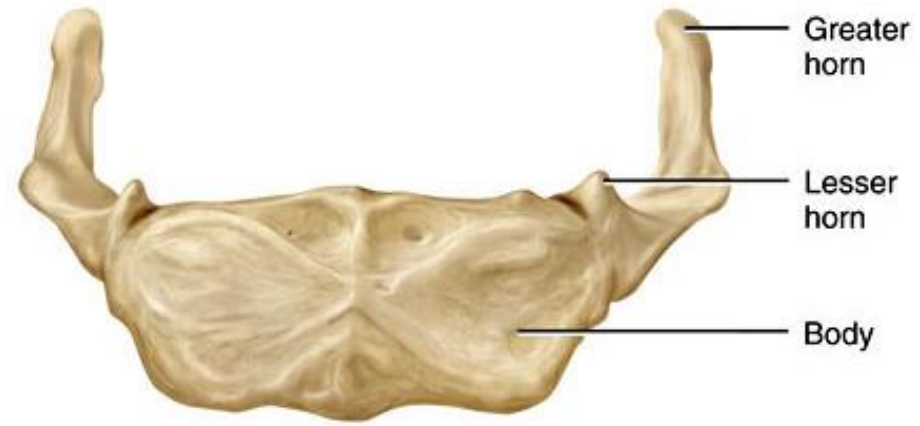
Lingula



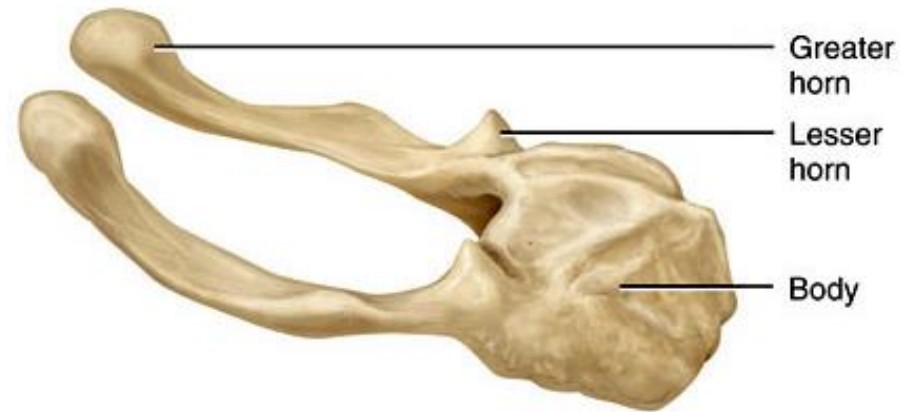
# Mandible



# Hyoid bone

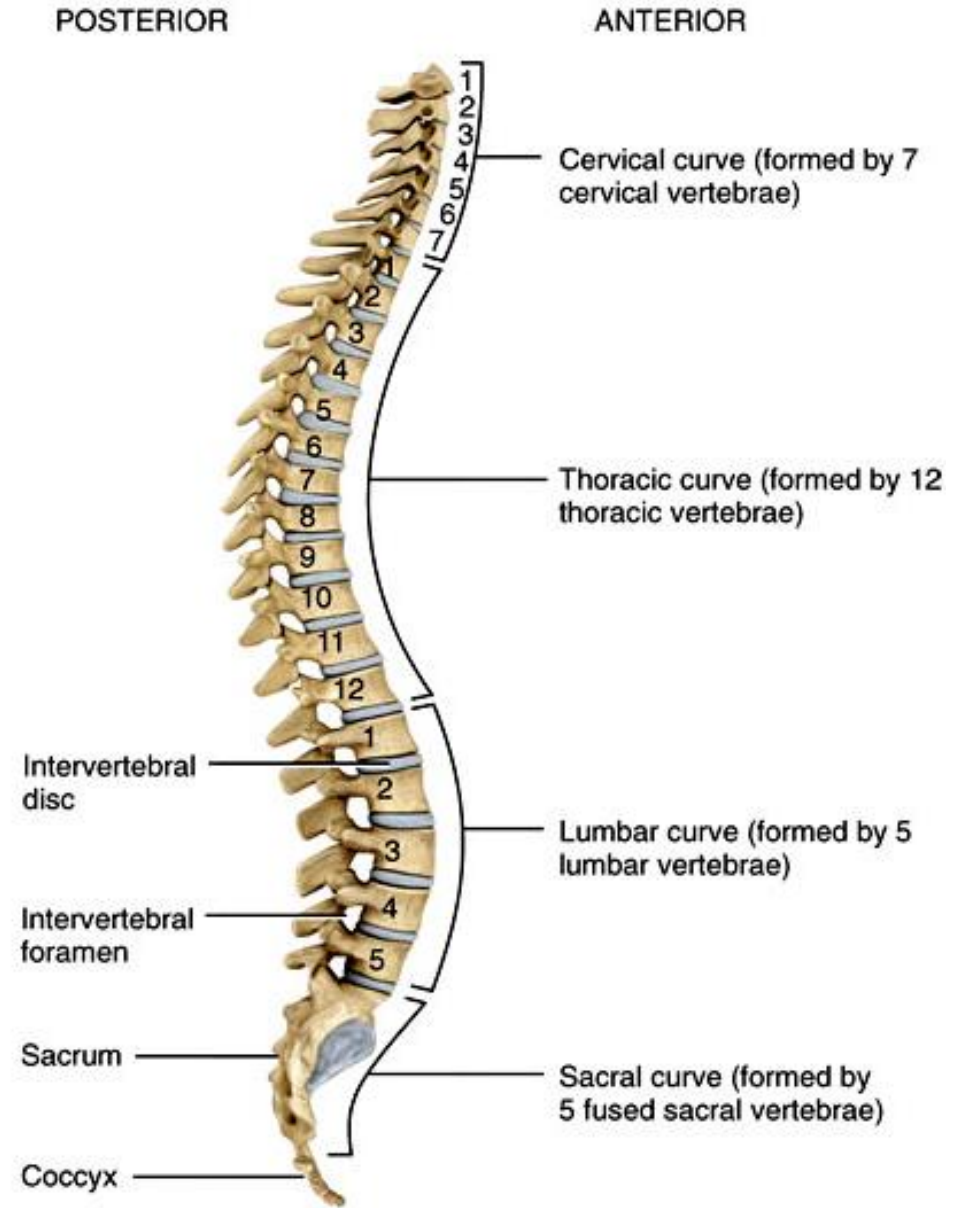


(b) Anterior view



(c) Right lateral view

# Vertebral column



Cervical

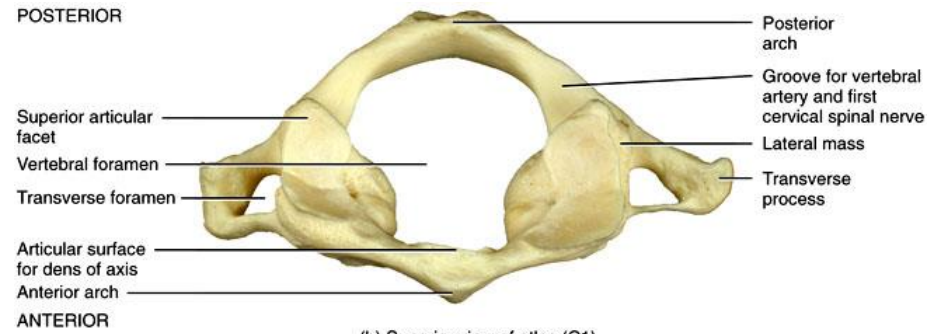


Thoracic

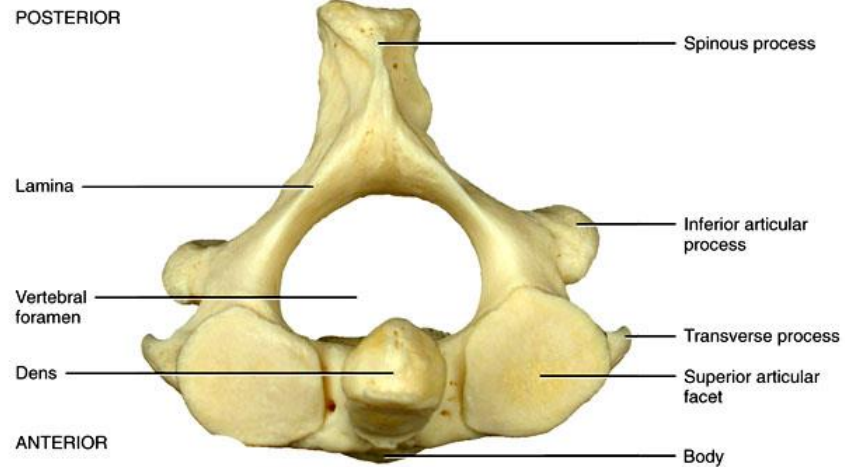


Lumbar

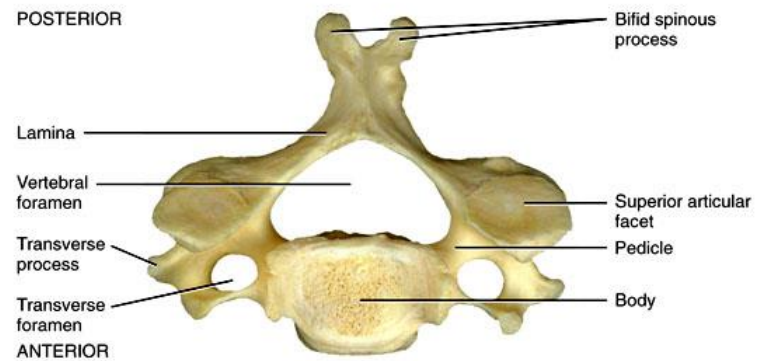




(b) Superior view of atlas (C1)

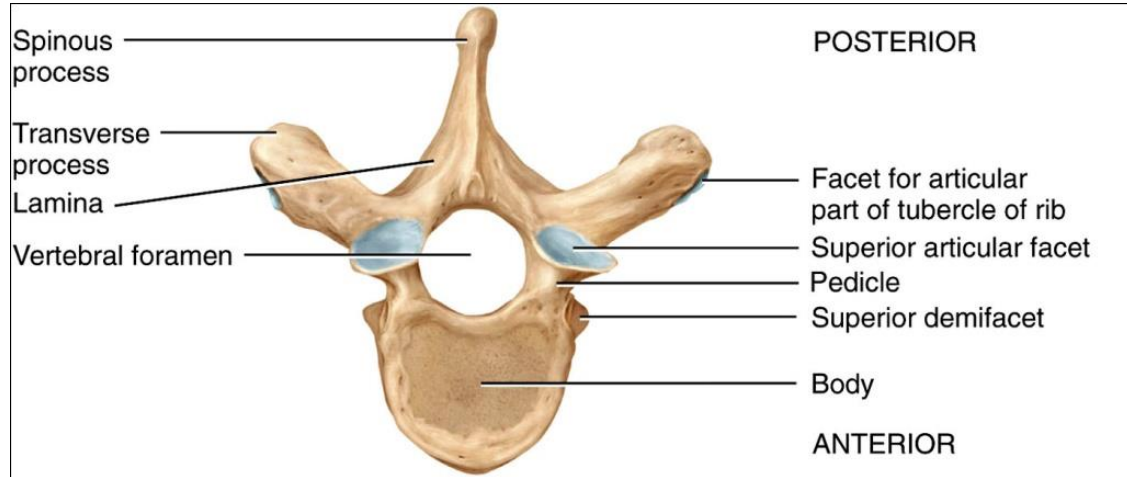


(c) Superior view of axis (C2)

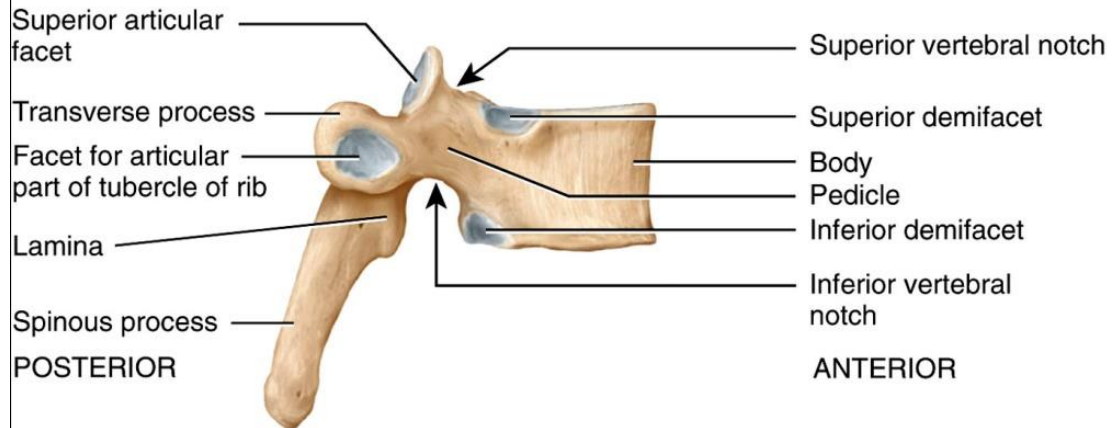


(d) Superior view of a typical cervical vertebra

# Thoracic

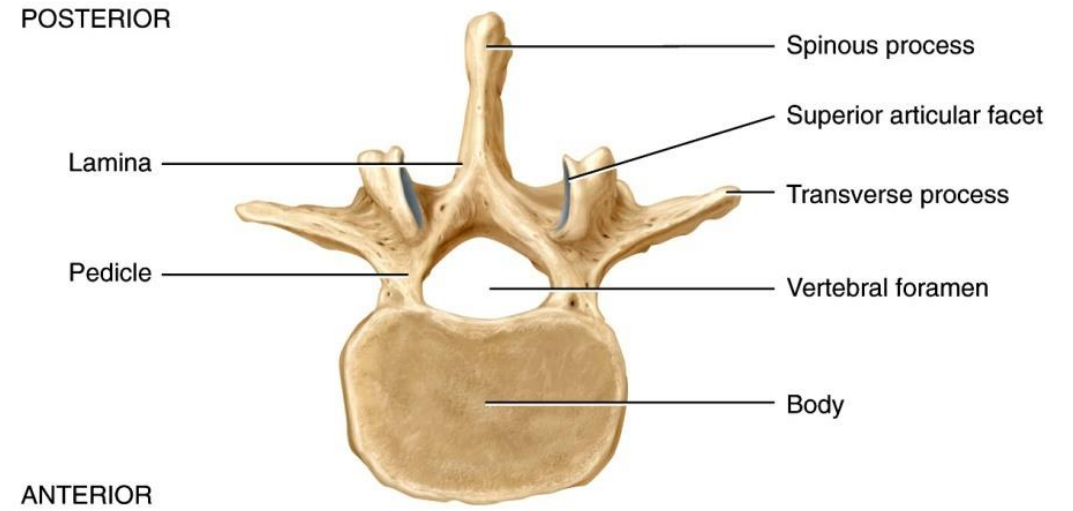


(b) Superior view

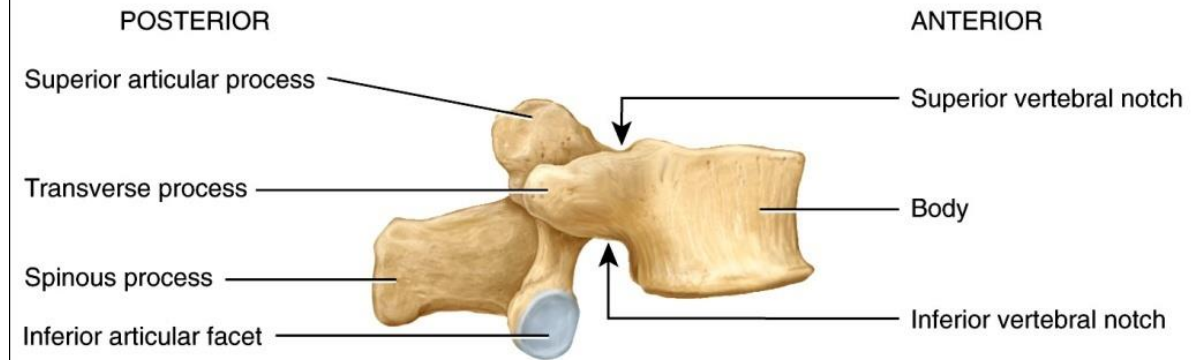


(c) Right lateral view

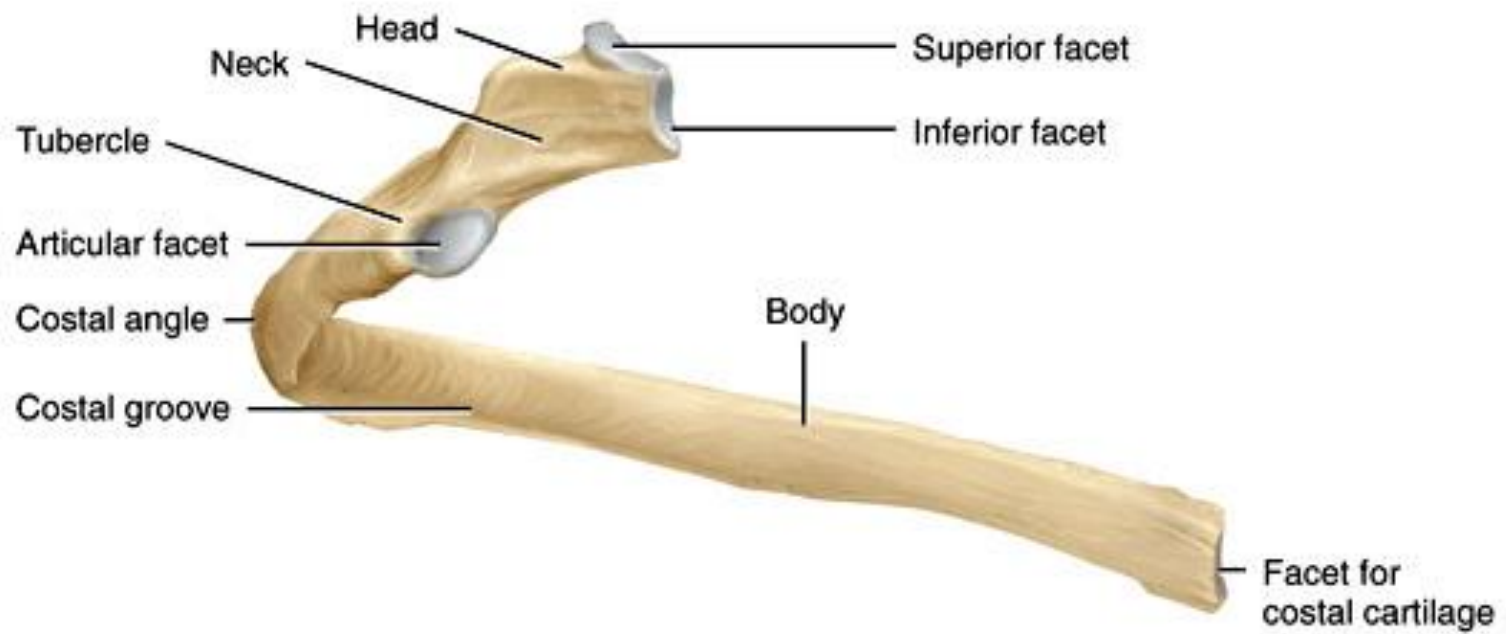
# Lumbar



(b) Superior view

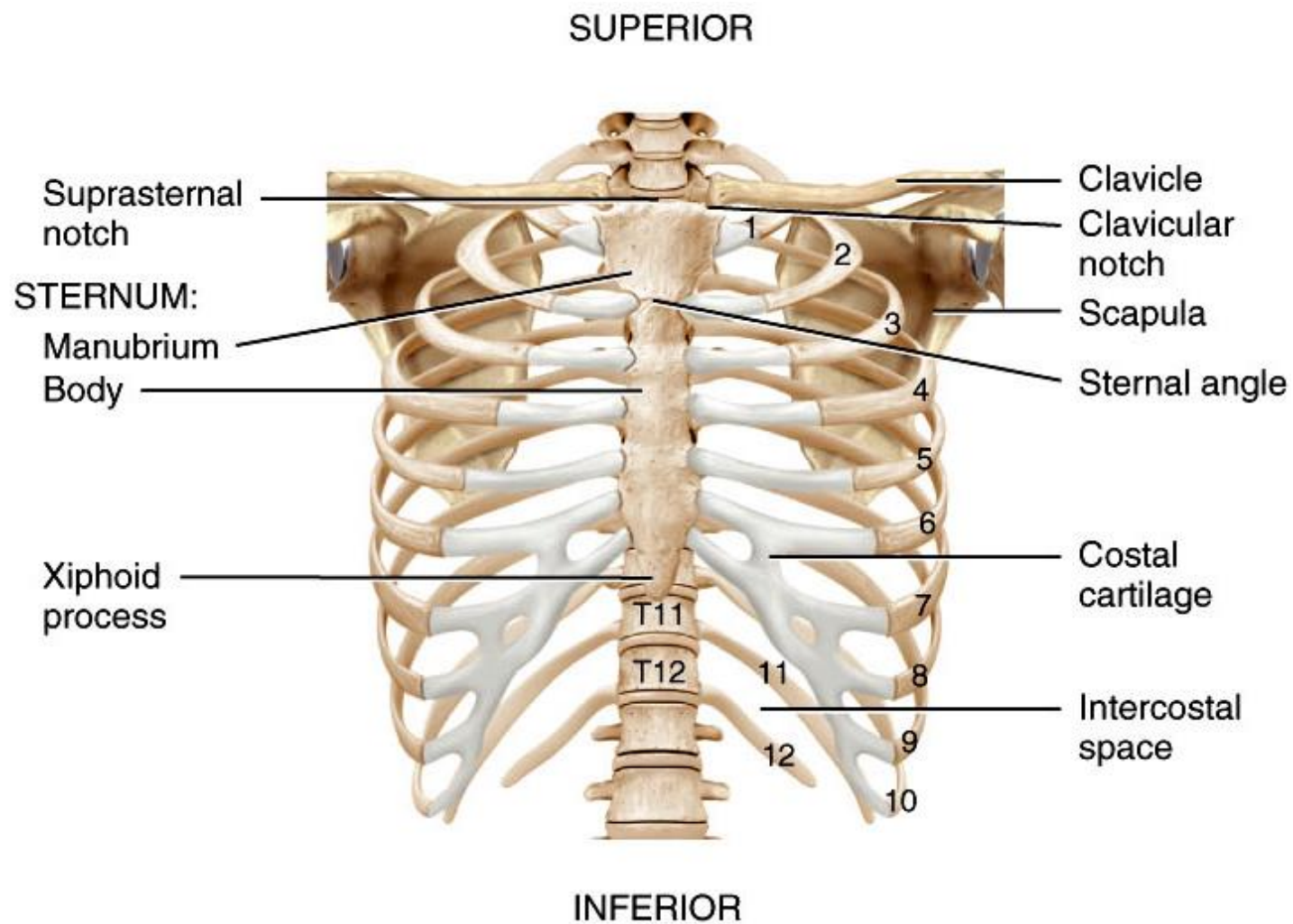


(c) Right lateral view



(a) Posterior view of left rib





(b) Anterior view of skeleton of thorax

The end