

وَقُلْ رَبِّ زِدْنِي عِلْمًا



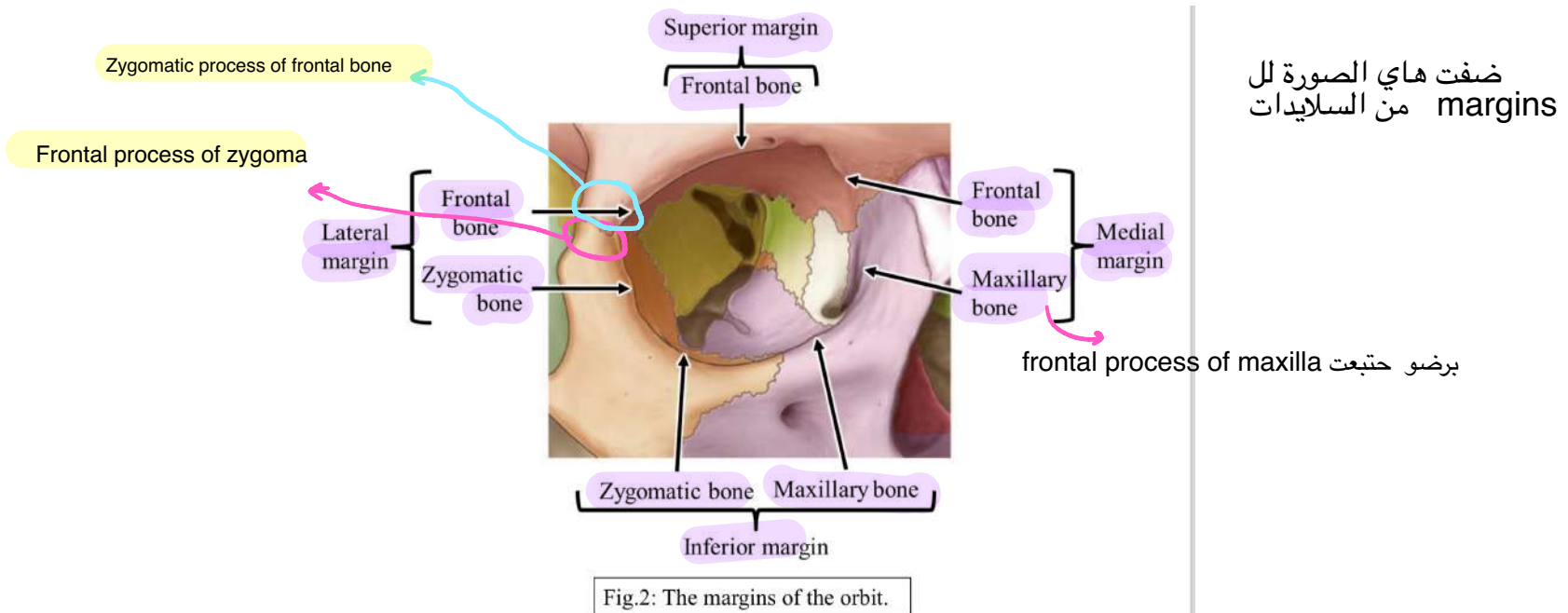
PERIPHERAL NERVOUS SYSTEM

SUBJECT : Anatomy
LEC NO. : Lab1
DONE BY : Shefaa' almaaitah

مبدأيا الي شرح دكتور محمد فتحي ف اللاب كان جداً ممتع

Practical section 1 PNS

ال zygomatic bone حثبتت لل frontal وال frontal حثبتت لل zygoma



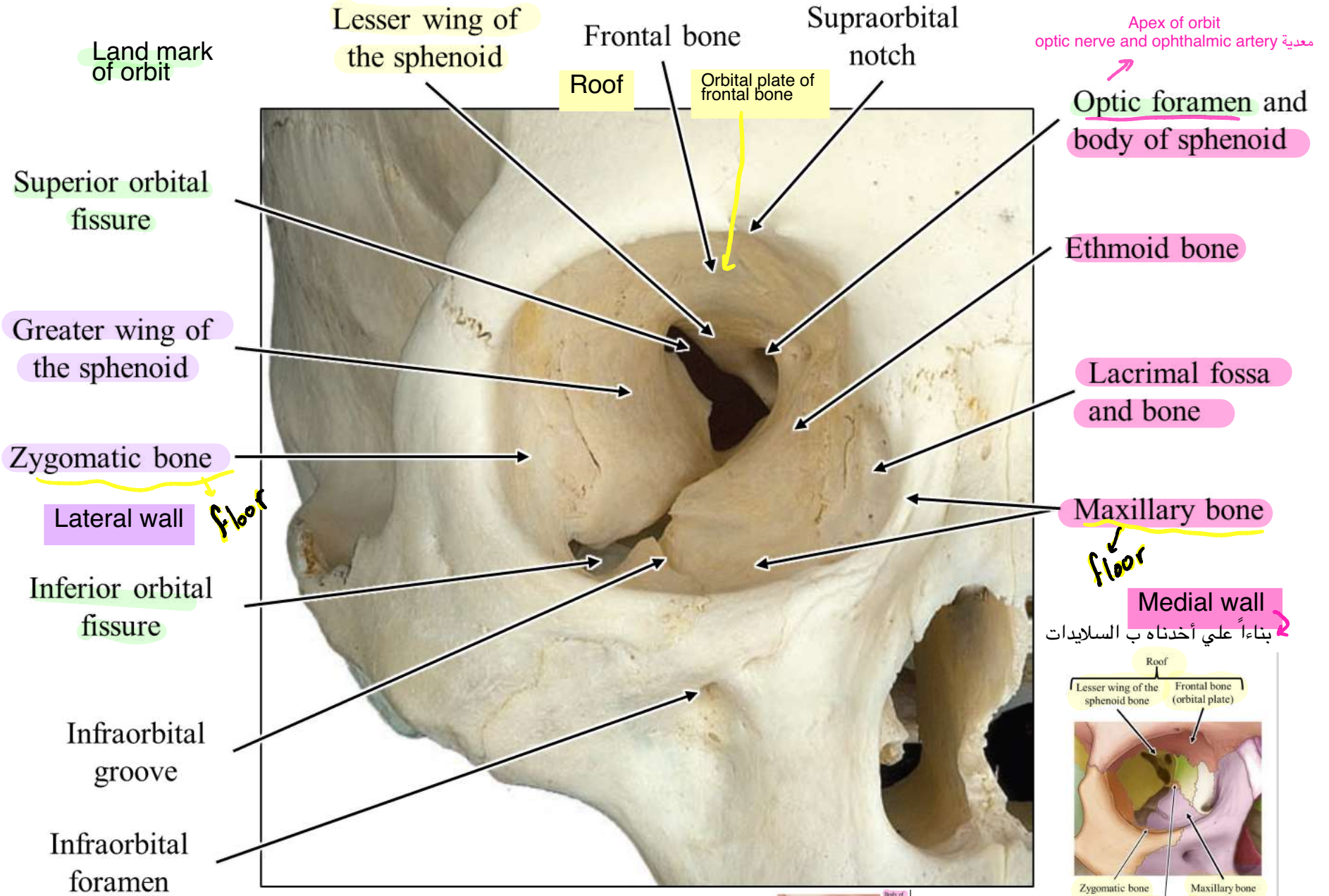


Fig.: The orbit.

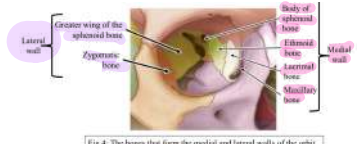


Fig.4: The bones that form the medial and lateral walls of the orbit.

كيف أميّز ال medial من Lateral

Thickened of eyelid is tarsus

اهم structure داخل ال orbit هو ال eyeball

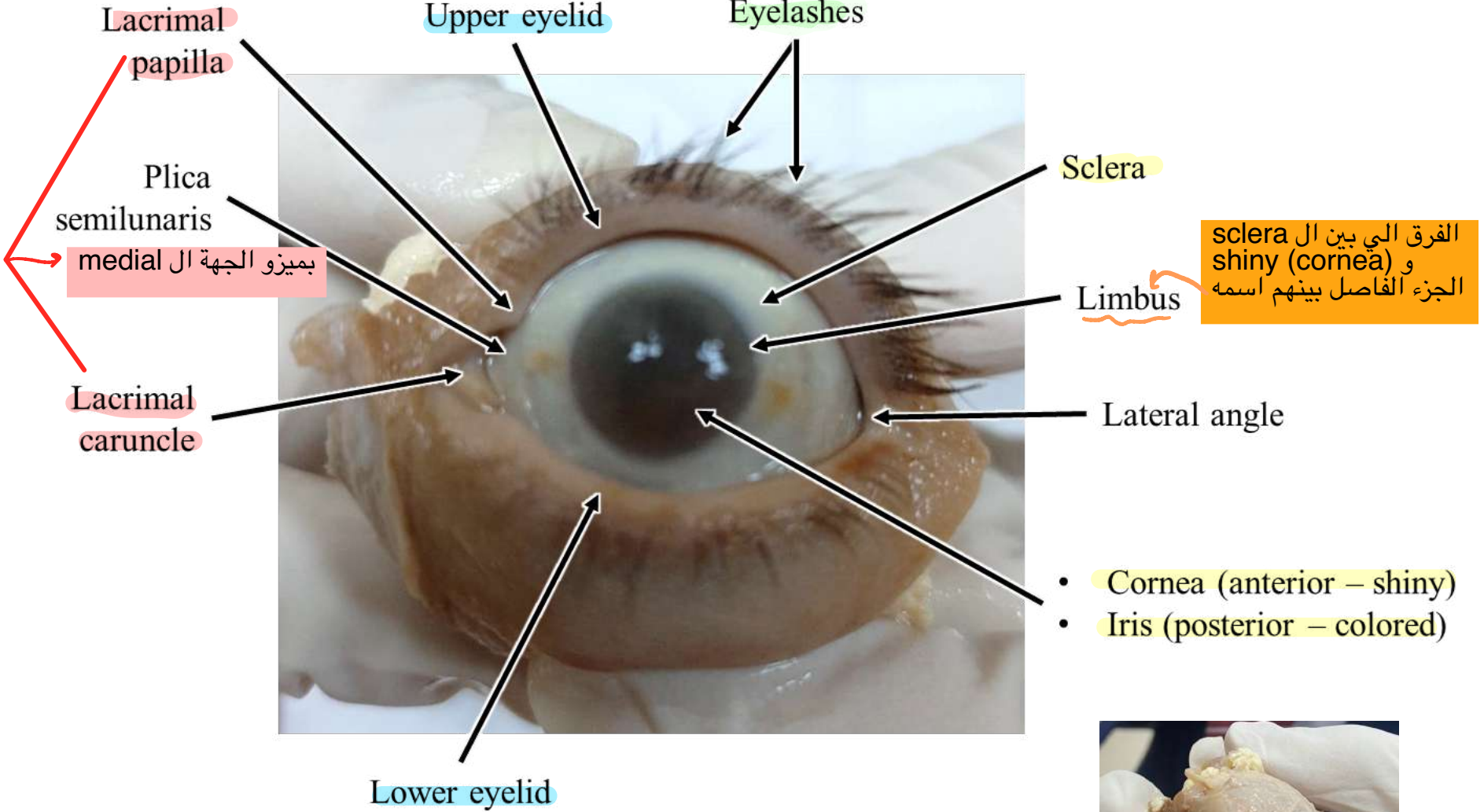
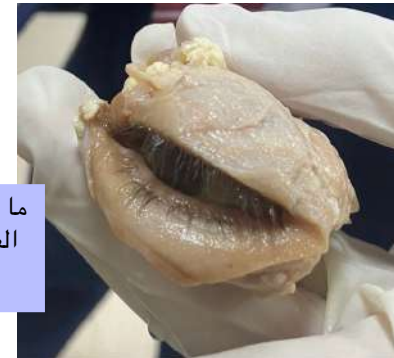


Fig.: Anterior view of the eye and lids (the eyelids are retracted).

ما حرمتكم من شي هاي العين الي شرحلنا عليها الدكتور ب اللاب



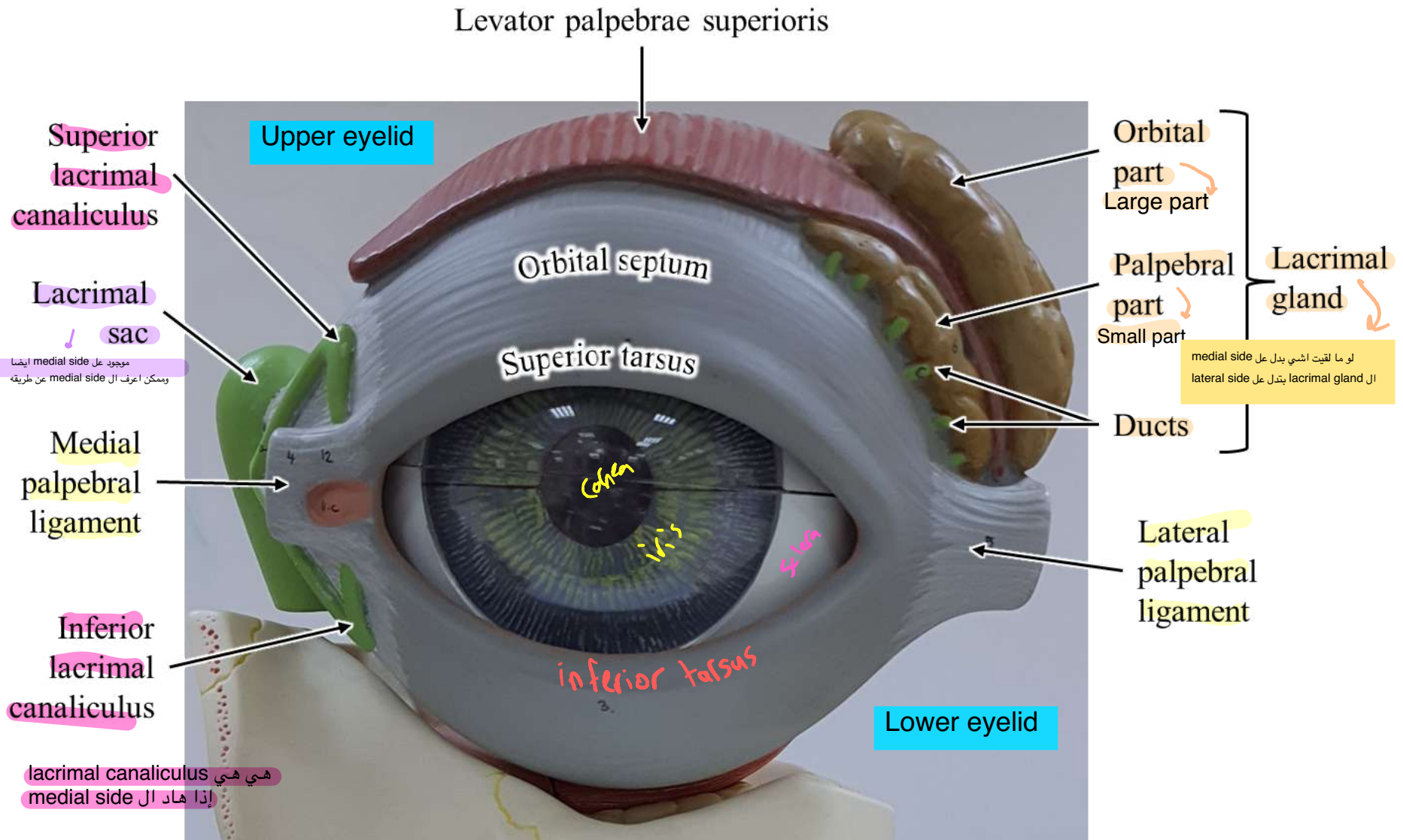


Fig.: Anterior view of the eye showing parts of the eyelids and lacrimal apparatus.

عضلة موجودة بين عضلتين (قوسين)

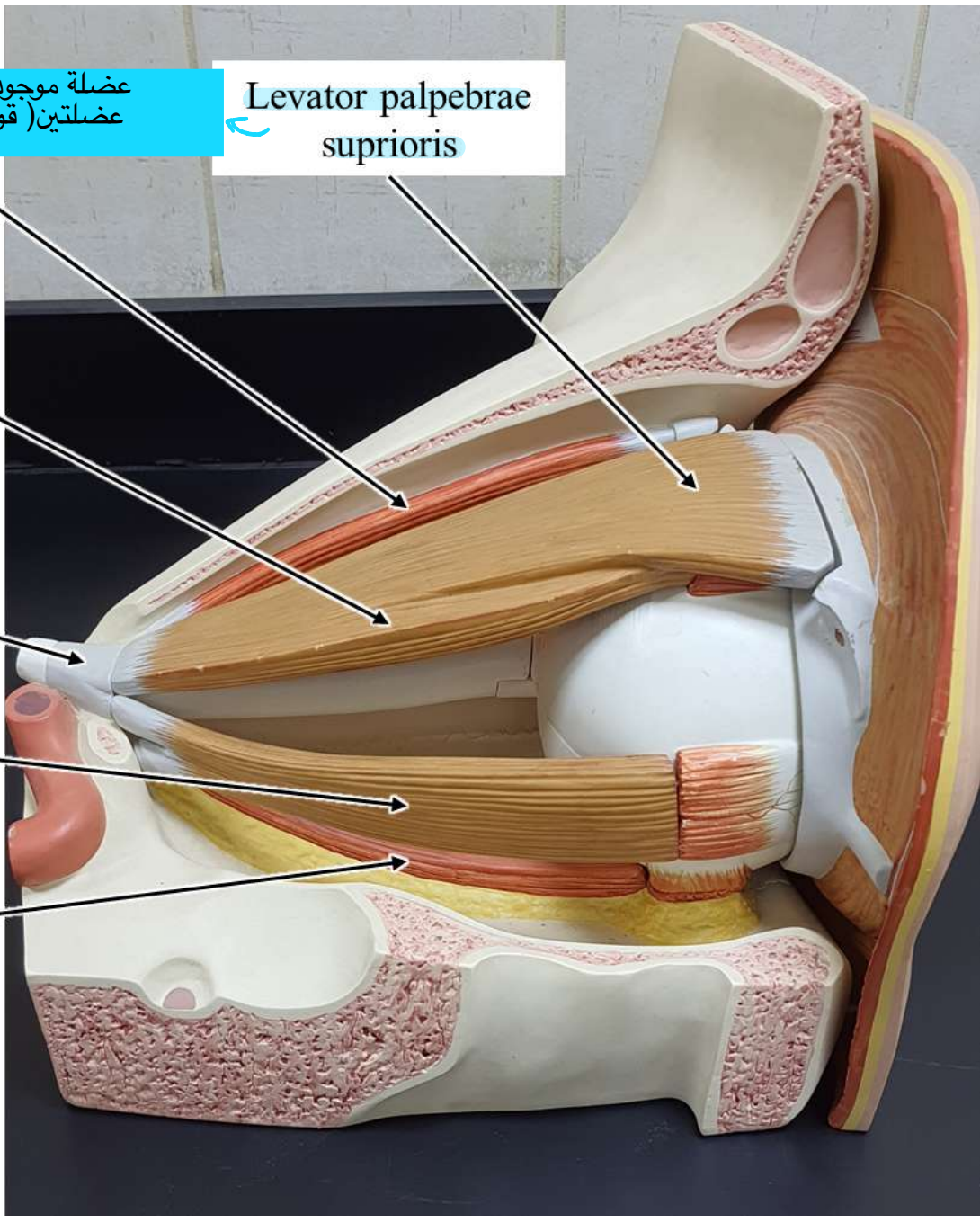
Superior oblique
الها اشبي مميز حنكلي عنه

Superior rectus
لـفوق

Common tendinous ring

Lateral rectus
لـجرا

Inferior rectus
لـلحد



Levator palpebrae superioris

Fig.: Lateral view of right eye showing extraocular muscles.

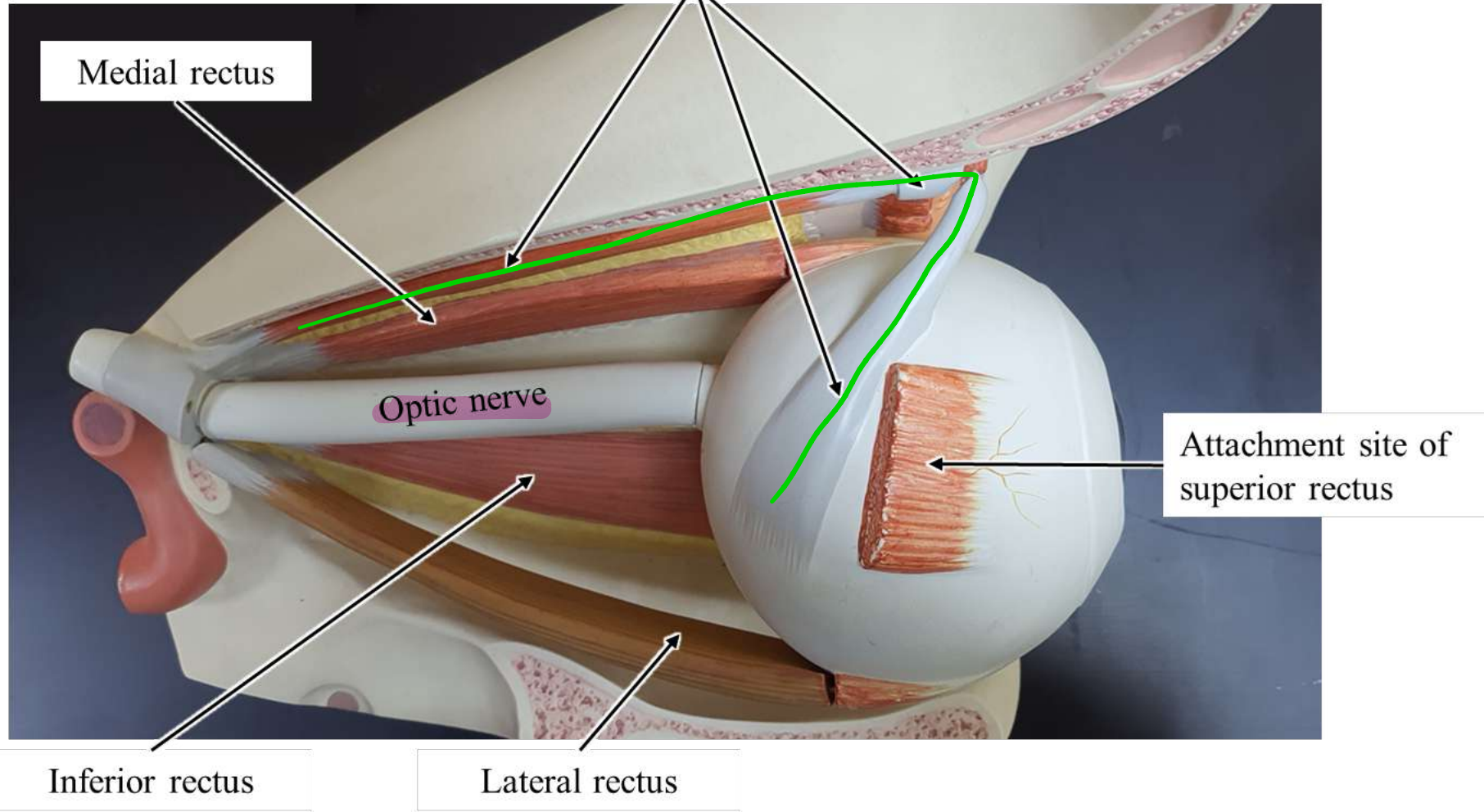
Fig.: Superior view of right eye showing extraocular muscles.

هلا ال levator بتكون تحتها بس احنا قصيناها
عشان نشوف كل ال superior oblique

Superior oblique
(muscle, tendon,
trochlea)

طلعت من common tendinous ring لكن وهي طالعه وماشية تحت
ال orbital plate of frontal bone وحتلاقي حته protrusion من العظم
اسمها trochlea تروح معلقة ب trochlea ونازلة مكملة ب tendon
ومسكت بل sclera

شكلها مميز جدا الها



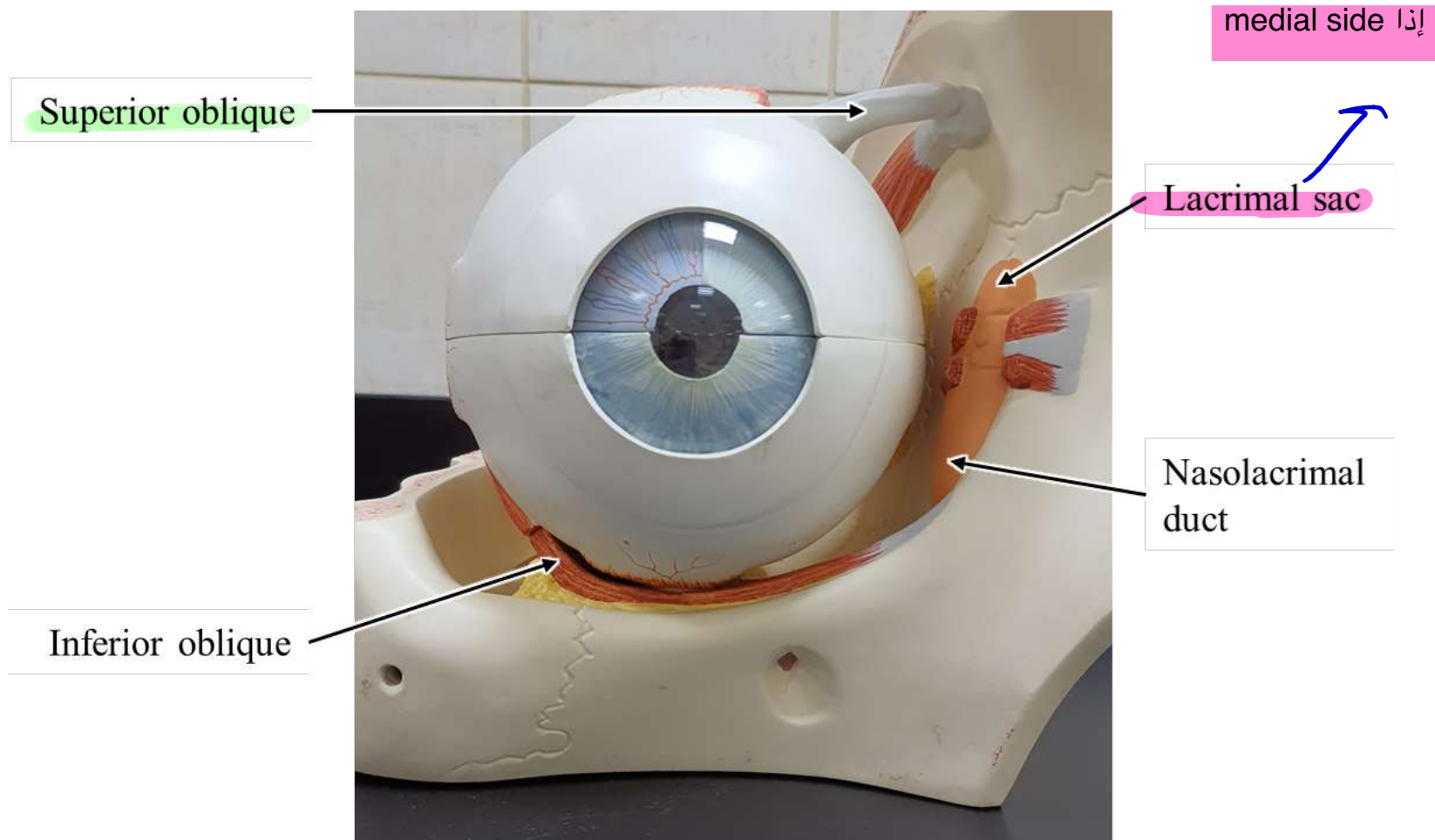


Fig.: Anterior view of the right eye showing extraocular muscles.

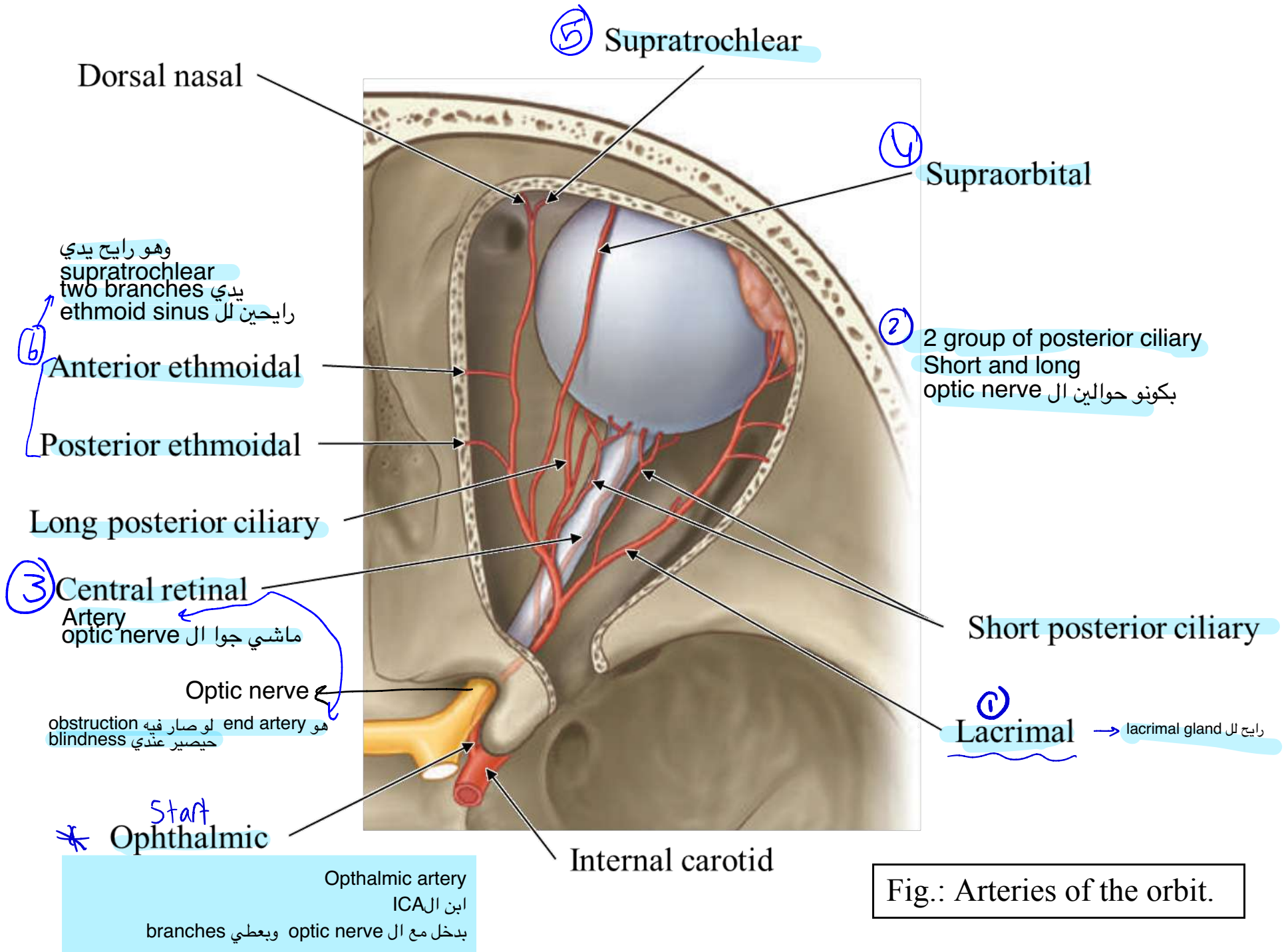
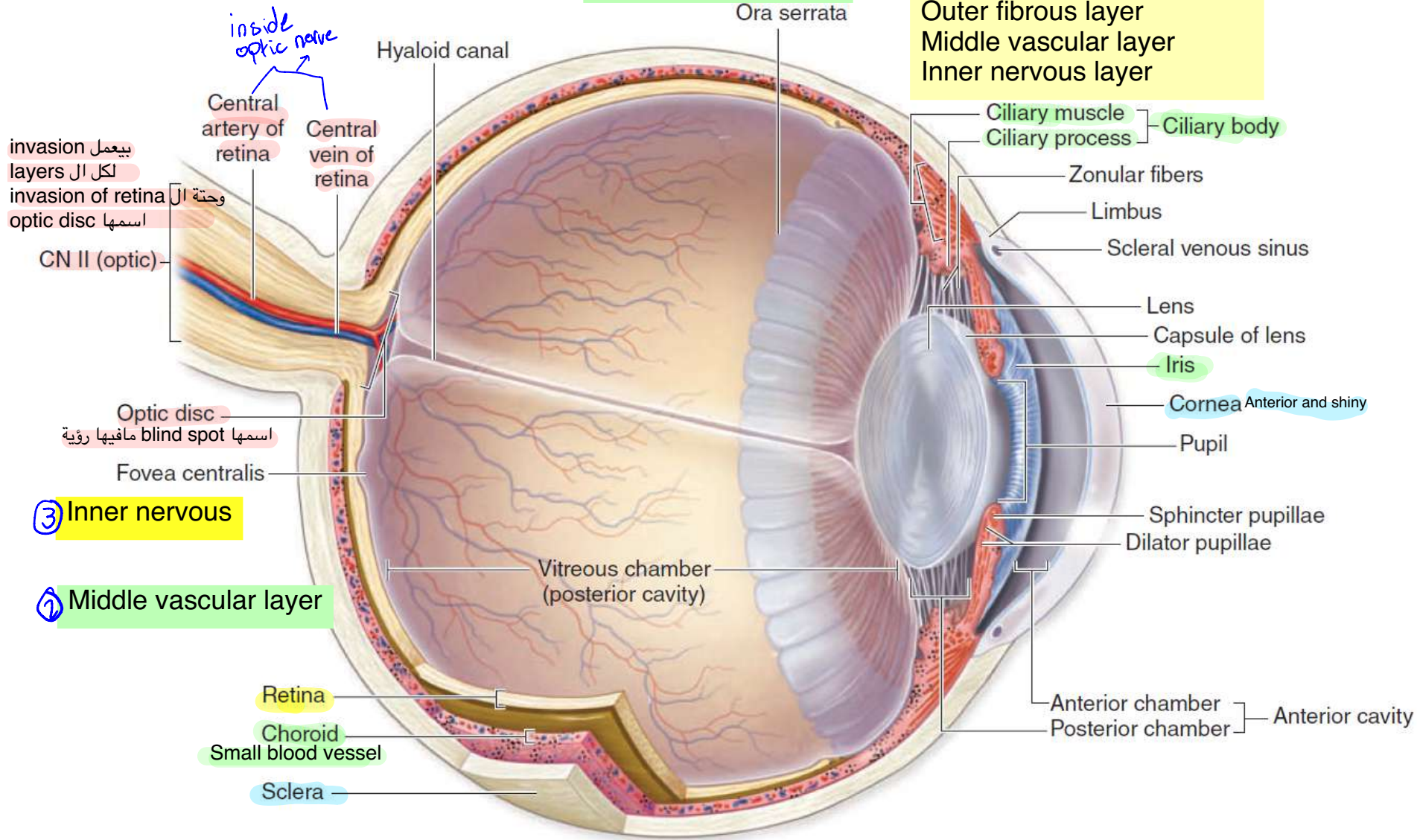


Fig.: Arteries of the orbit.

صورة لل layers of eye

3 layers
Outer fibrous layer
Middle vascular layer
Inner nervous layer



③ Inner nervous

② Middle vascular layer

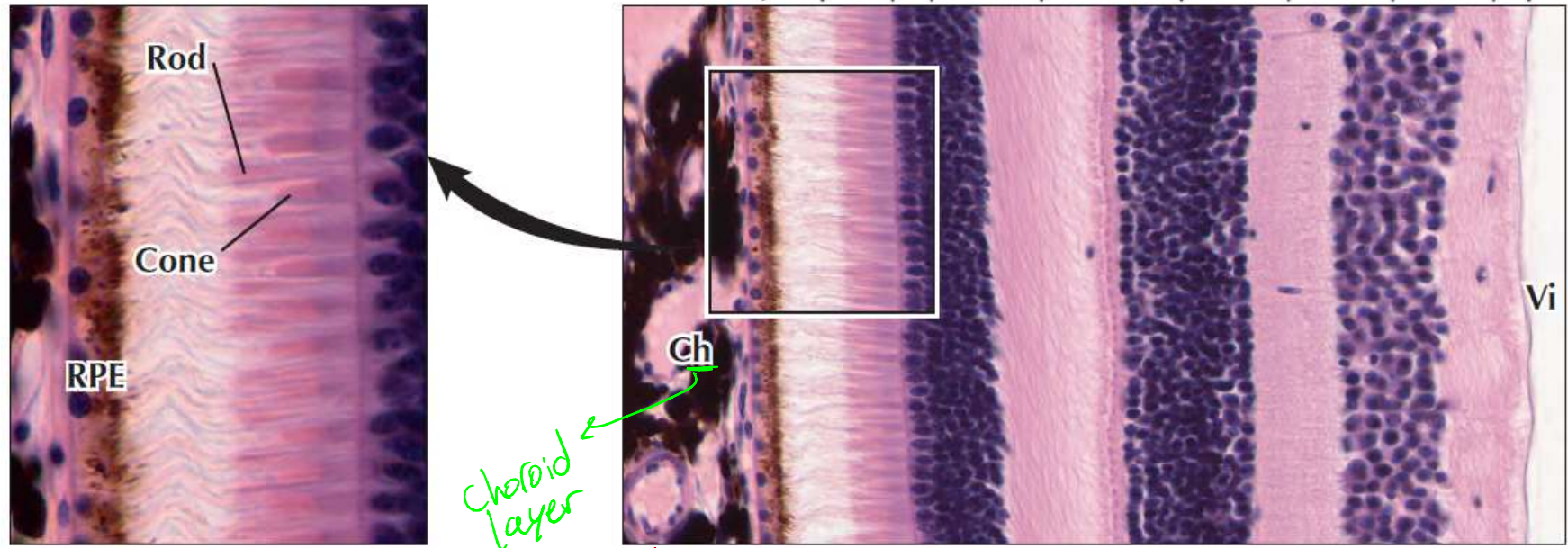
① Outer fibrous layer

Fig.: The eyeball.

externally يكون وهيك second layer التي هي choroid layer من اول شي نبدأ من
inside لل outside من إذا اول ما تيجي هاي الصورة ببدا من

external

internal



فيها pigment مميزة ← ايها فيها

Fig. Top-right, the layers of the retina: 1) RPE (retinal pigment epithelium); 2) rods and cones; 3) external limiting membrane; 4) outer nuclear layer; 5) outer plexiform layer; 6) inner nuclear layer; 7) inner plexiform layer; 8) ganglion cells layer; 9) nerve fibers layer; 10) internal limiting membrane. Top-left: magnified view showing the rods and cones. Note the difference in the shape of the outer segment. Ch, choroid; Vi, vitreous body.

Motor supply of face
Facial nerve branches

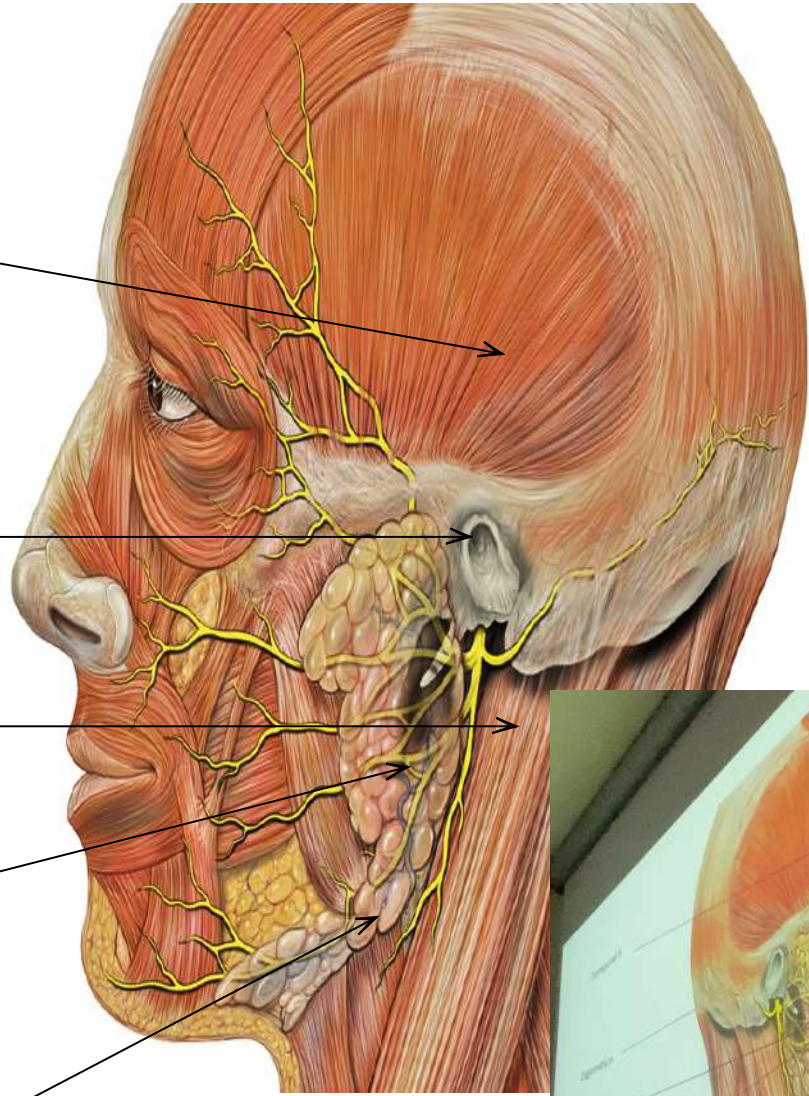
Temporal n

Zygomatic n

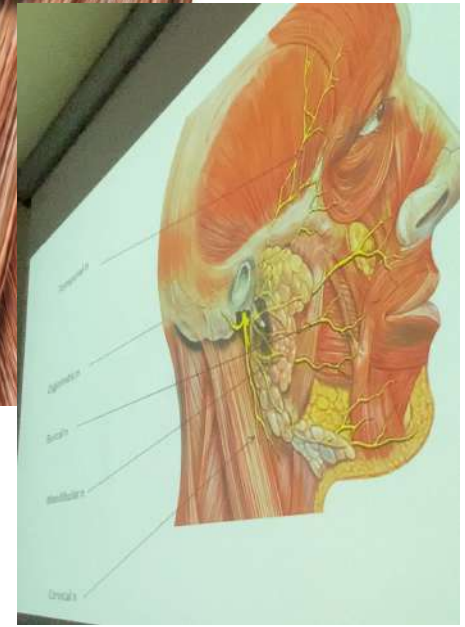
Buccal n

Mandibular n

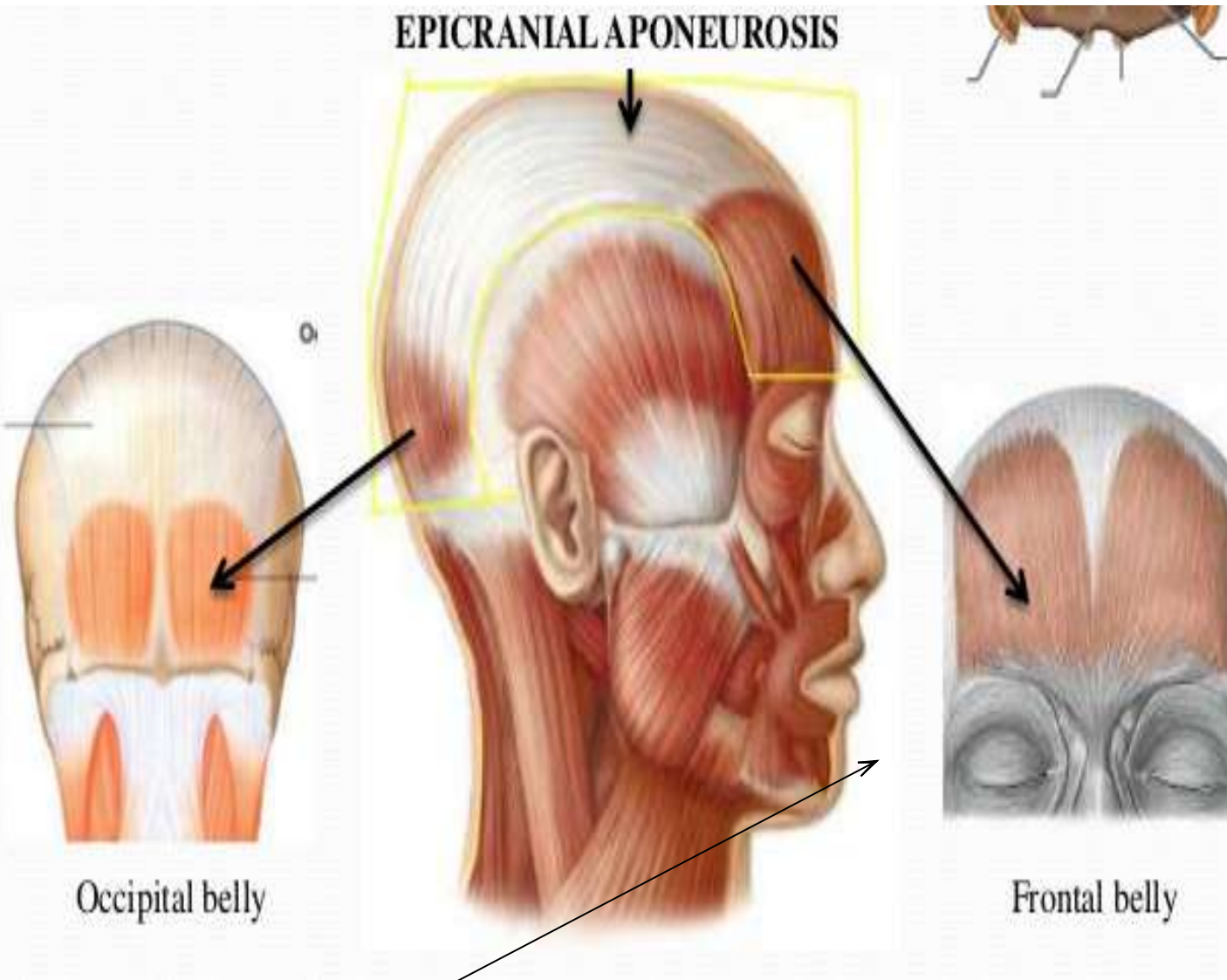
Cervical n



الوجه
24



EPICRANIAL APONEUROSIS



Occipital belly

Frontal belly

Motor supply of face from facial nerve
Sensory supply from trigeminal nerve mixed nerve تحديدا mandibular division

Ophthalmic division

1-supratrochlear

2-supraorbital

3-palpebral br of
lacrimal lacrimal gland ناحية ال

4-infratrochlear

5-external nasal



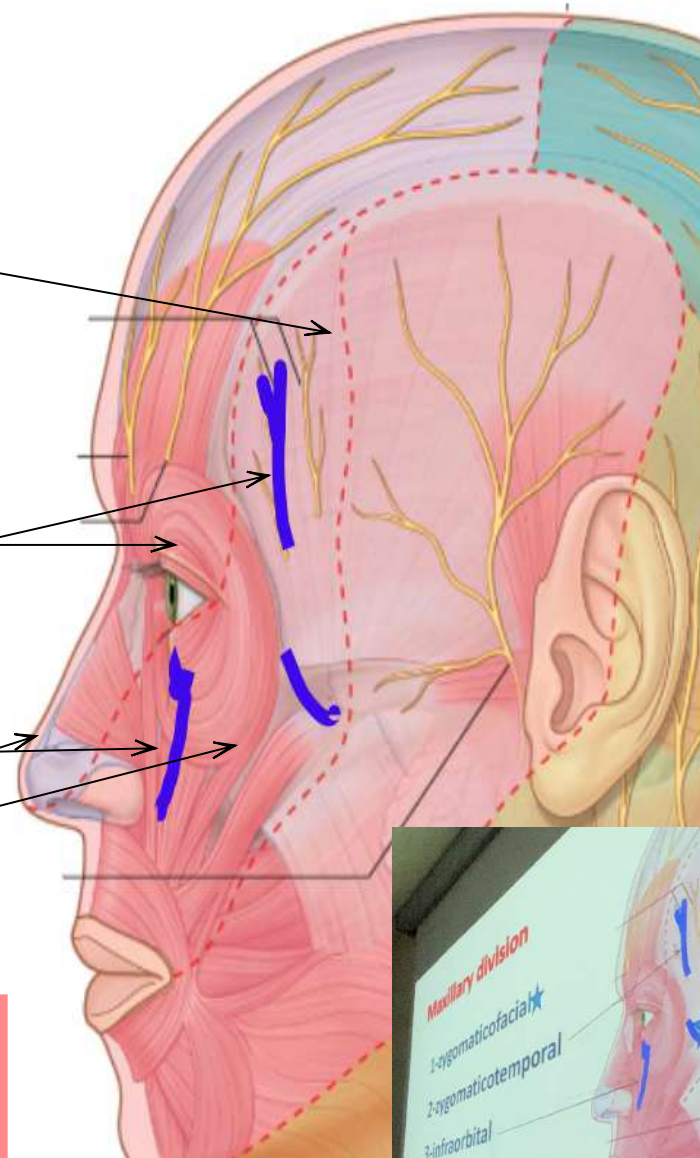
صاح
صوت
الاسم

Maxillary division

1-zygomaticofacial

2-zygomaticotemporal

3-infraorbital



سؤال امتحان
ال infraorbital شو علاقته بل maxillary division هو ولا direct continuation
هو direct continuation وليس division

Mandibular division

1-mental ★

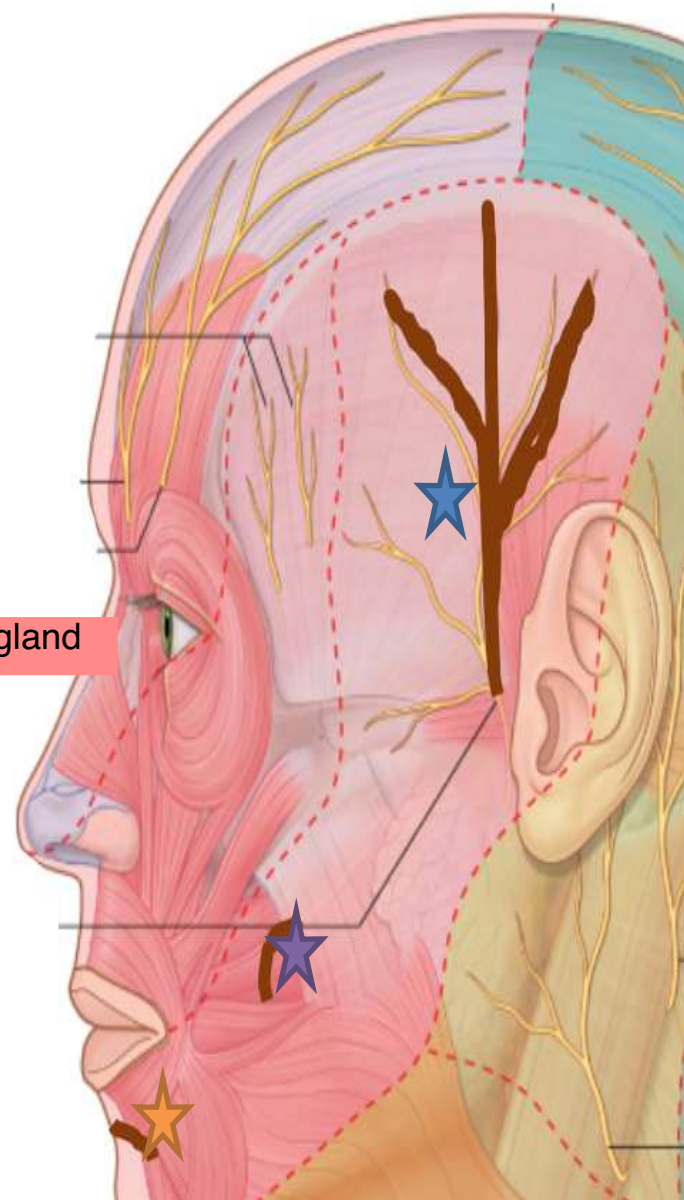
2-buccal ☆

3-auriculotemporal ★

The auriculotemporal nerve is a sensory branch of the mandibular nerve (CN V3) that runs with the superficial temporal artery

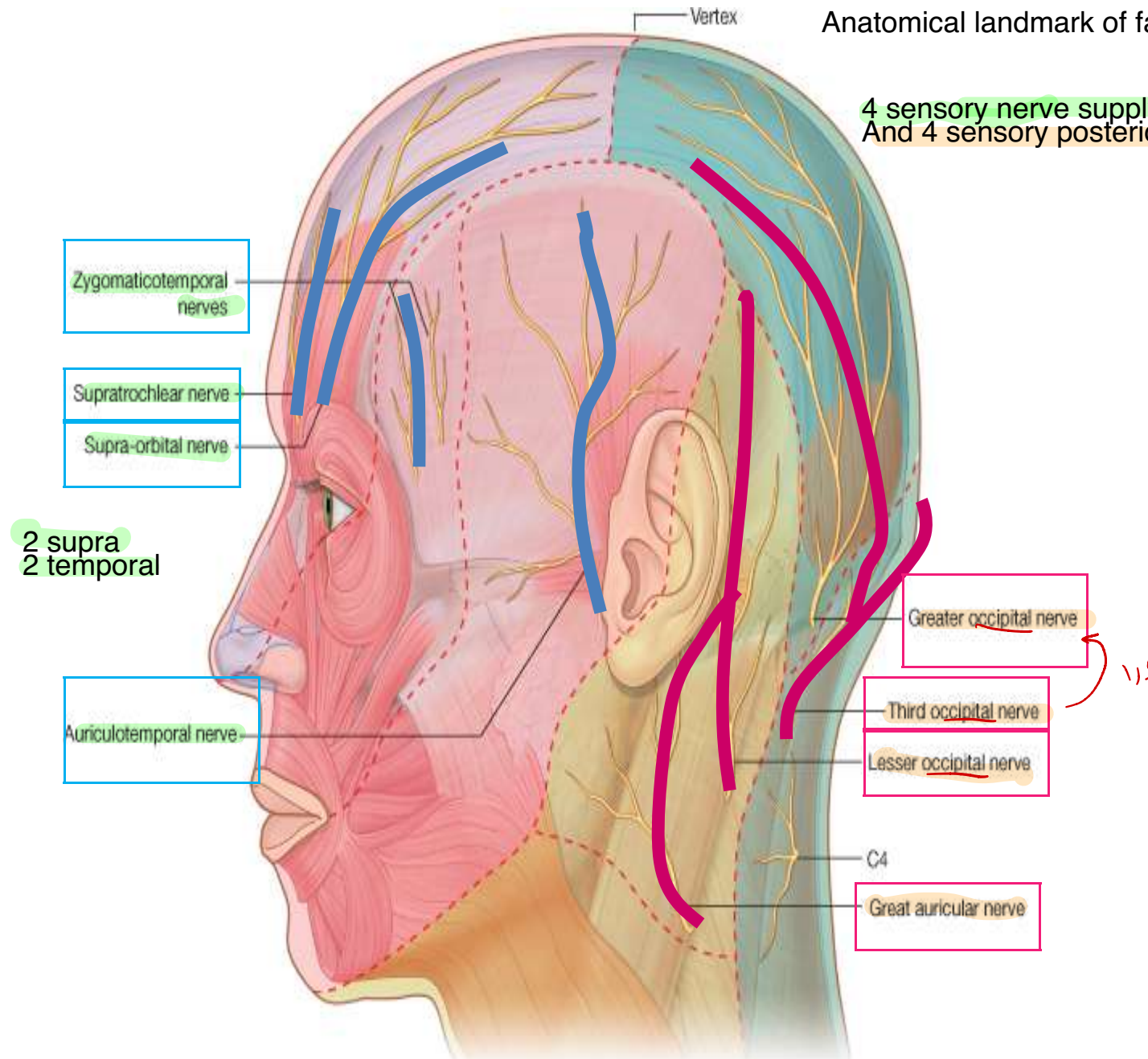
خد بالك منها 🤔

Give sensory supply to parotid gland



Anatomical landmark of face is auricle

4 sensory nerve supply anterior to auricle
And 4 sensory posterior to auricle



The surface anatomy of the auricle of the ear.

Half circle outside

Helix

Triangular fossa

Antihelix

Depression

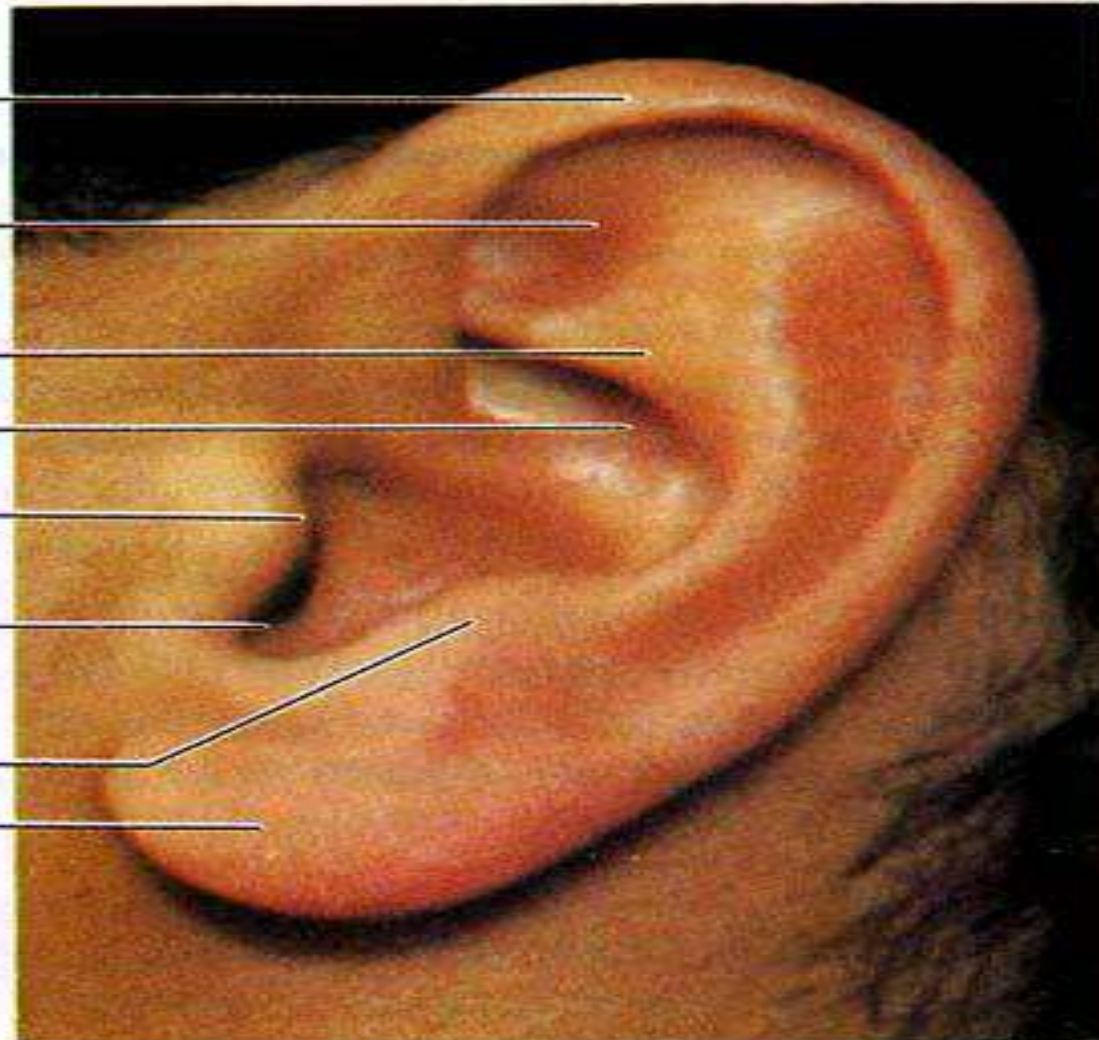
Concha

Tragus

External auditory meatus

Antitragus

Lobule



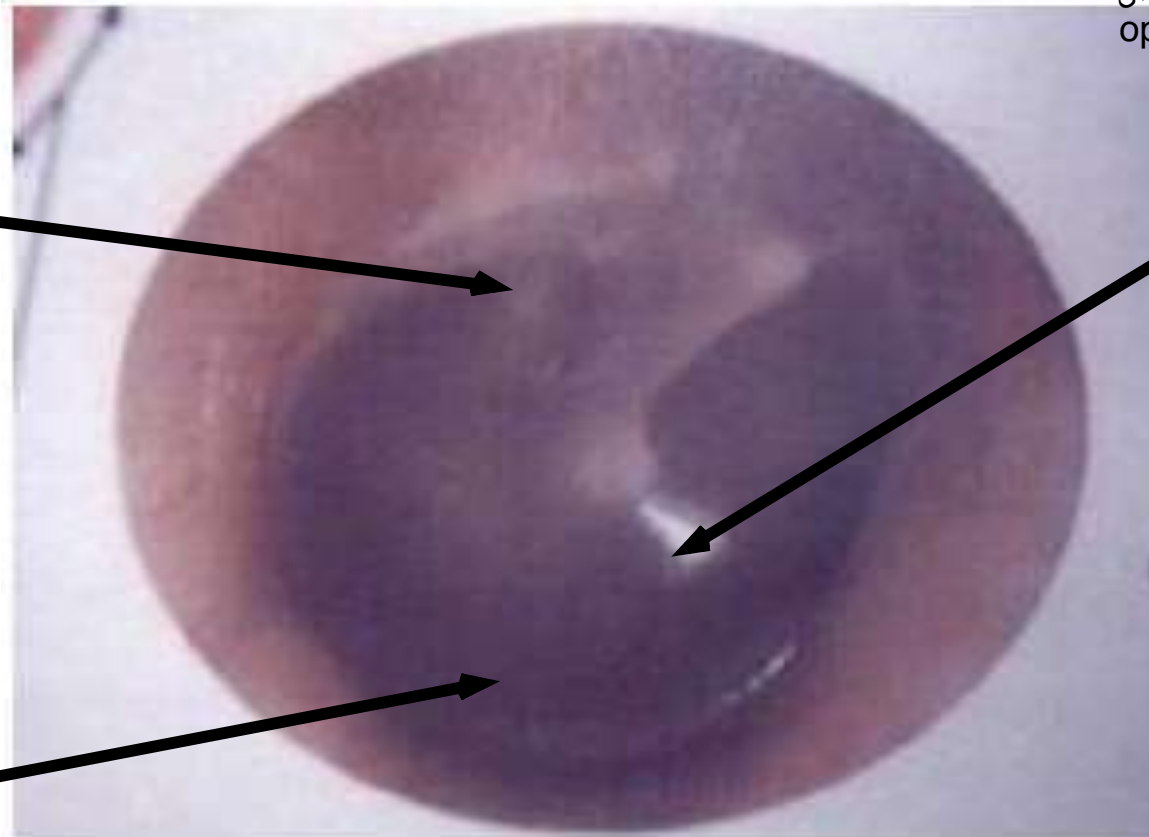
Tympanic membrane
Eardrum

حتة منورة بيحي عليها النور تا ع ال
ophthalmoscope

③ umbo

لما تشوفه يعني
intact tympanic membrane

① Pars flacida

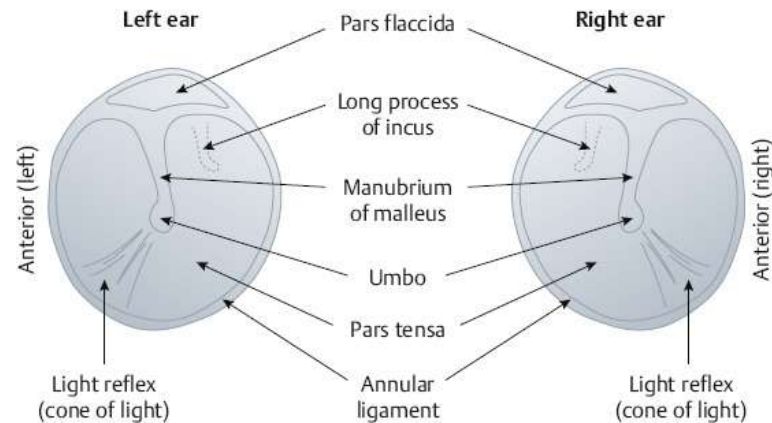


② Pars tensa

how to differentiate between right and left tympanic membrane by umbo?

د اشرف حاكي انه ممكن يجيبه سؤال امتحان 🤓 وحكا انتو دورو ع اجابته ف جبلكم اجابته

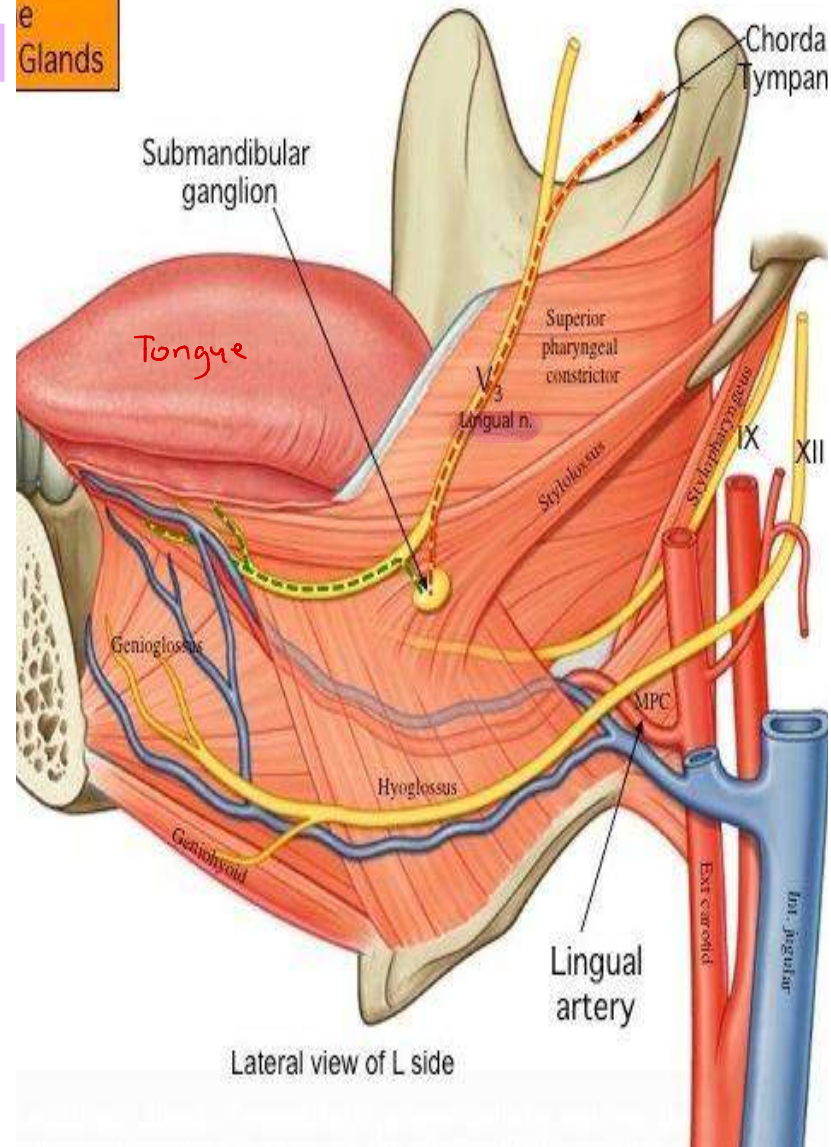
	Right Tympanic Membrane	Left Tympanic Membrane
LIGHT REFLEX OR CONE OF LIGHT	Positioned at the 4 o'clock to 5 o'clock position in the right eardrum	Positioned at the 7 o'clock to 8 o'clock position in the left eardrum



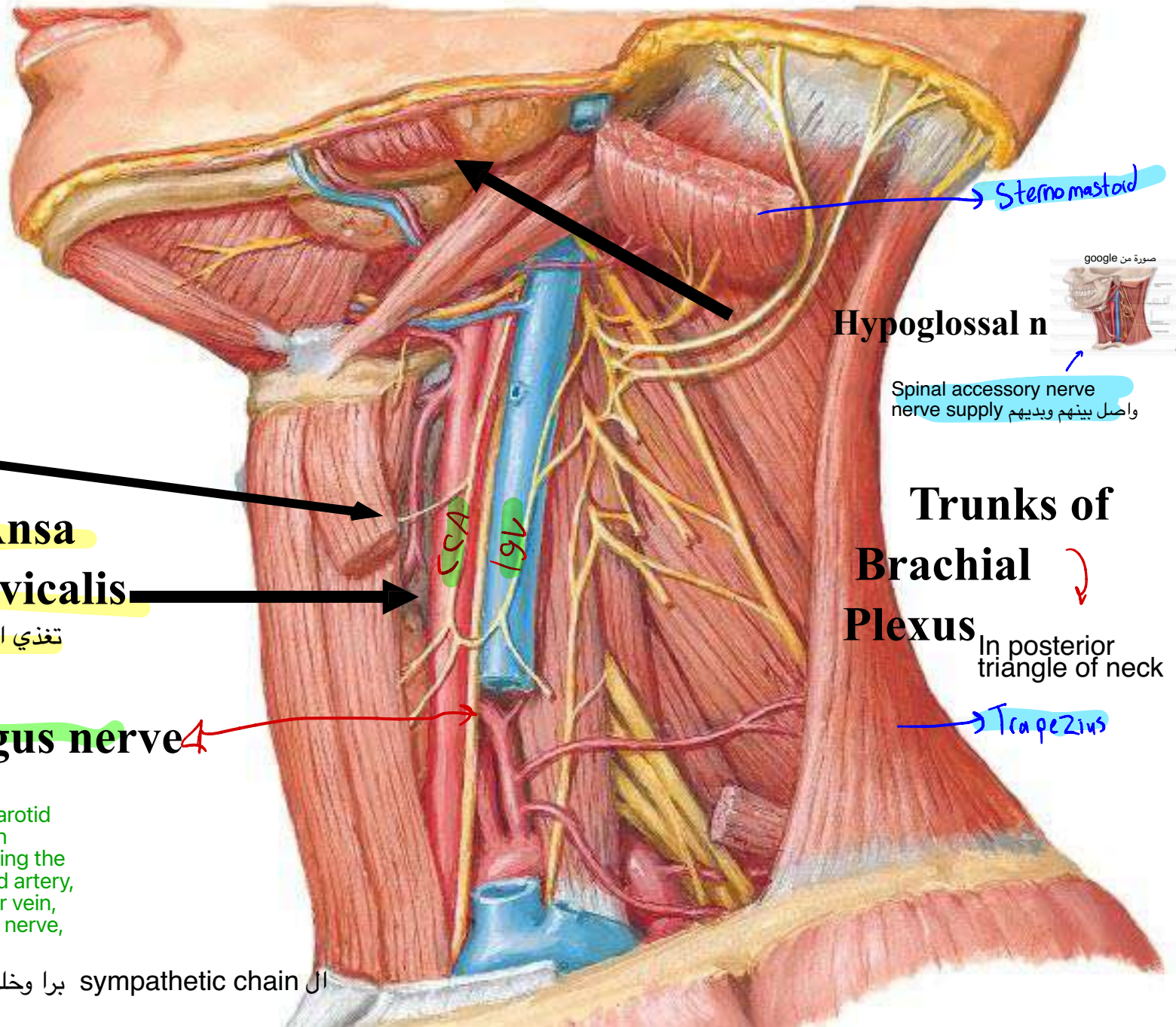
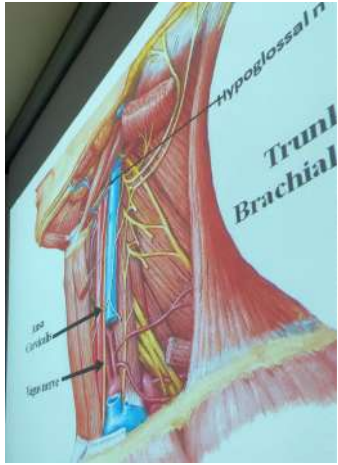
Parasympathetic ganglions in head and neck

e
Glands

ال nerve supply الي شاي ال sensory of tongue هو lingual nerve
 الي بشي ال taste هو chorda tympani وهو branch of facial nerve
 وهو شاي ال parasympathetic
 وهو معلق submandibular ganglion
 إذا ال sensory تاغ ال ganglion هو lingual nerve
 و parasympathetic ال ganglia برضو ال lingual nerve بس ال
 chorda tympani هو الي داخل يعني الفكرة انه ال parasympathetic
 Chorda Tympani لكن محمول عل lingual nerve جاي من



بتوريني ال nerve supply of neck



الاسم الفح

carotid sheath قدام ال

Ansa Cervicalis

infrahyoid muscle تغذي ال

Vagus nerve

The carotid sheath including the carotid artery, jugular vein, vagus nerve,

carotid sheath ال sympathetic chain ال برا وخلف ال

Sternomastoid

Hypoglossal n

Spinal accessory nerve nerve supply واصل بينهم وبيدهم

Trunks of Brachial Plexus

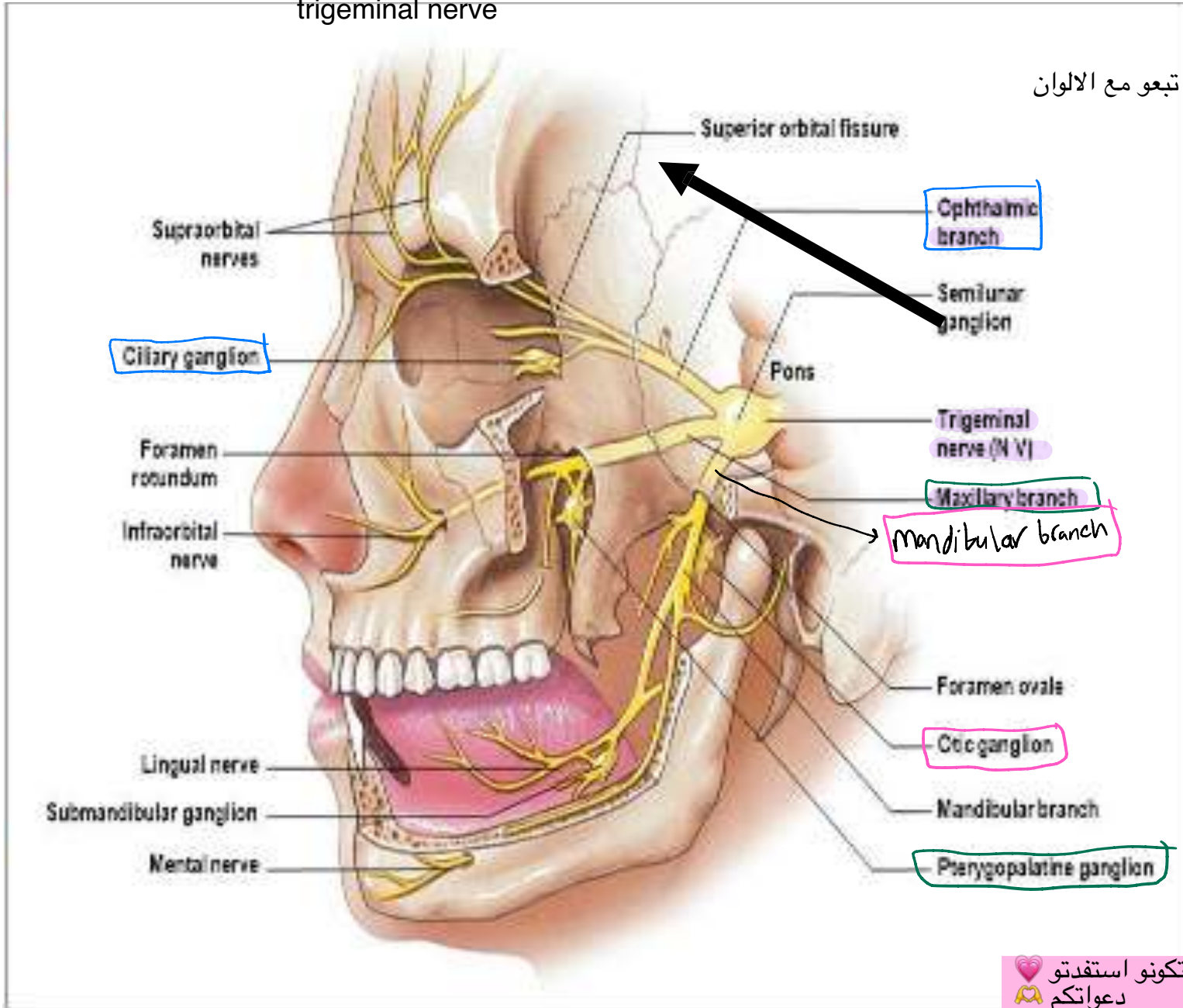
In posterior triangle of neck

Trapezius



ال ganglion ال parasymphatic الي related لكل branch من trigeminal nerve

تبعو مع الالوان



بتمنى تكونو استفدتو
دعواتكم