



معكم خطوة بخطوة

Anatomy  
Passion



Lecture: Anatomy "Lab 3"

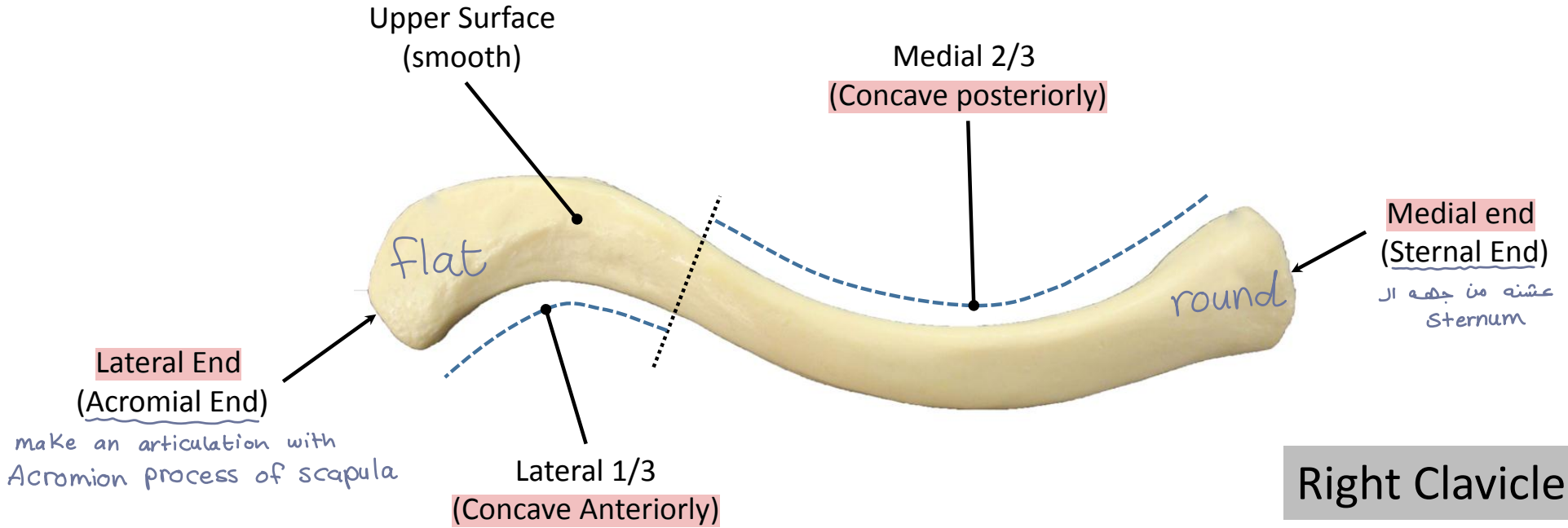
Done By: Sura Jawarneh

بِسْمِ اللَّهِ الرَّحْمَنِ الرَّحِيمِ

## Lab 3

# Bones of Upper Limb

\* يتكون membrane و بصير ossification (تعظم) ← بيهر عظم  
 - الجزء الي بالمنتصف كان membrane

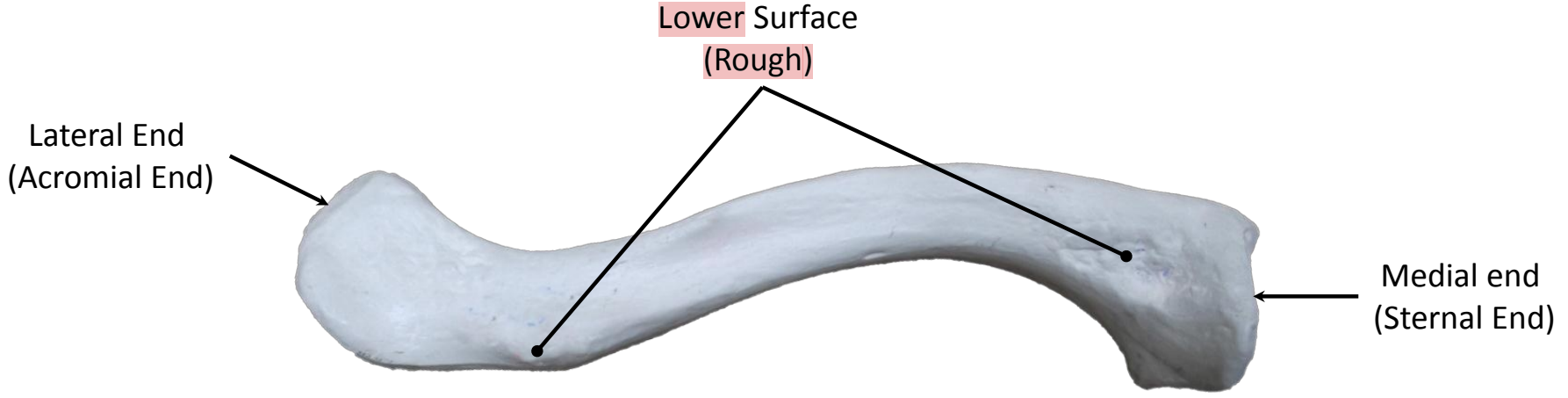
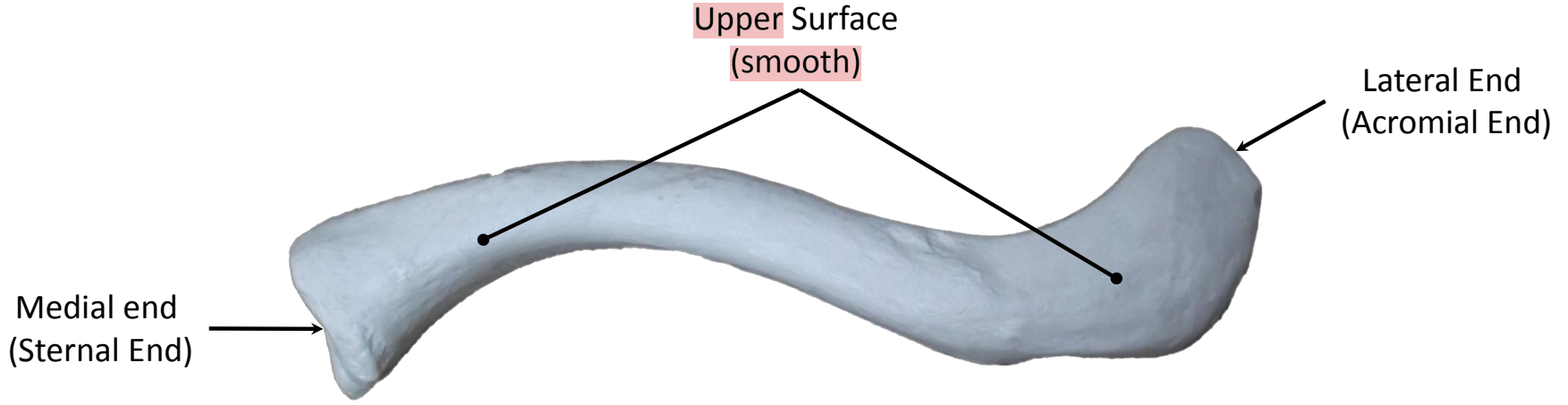


**Right Clavicle**

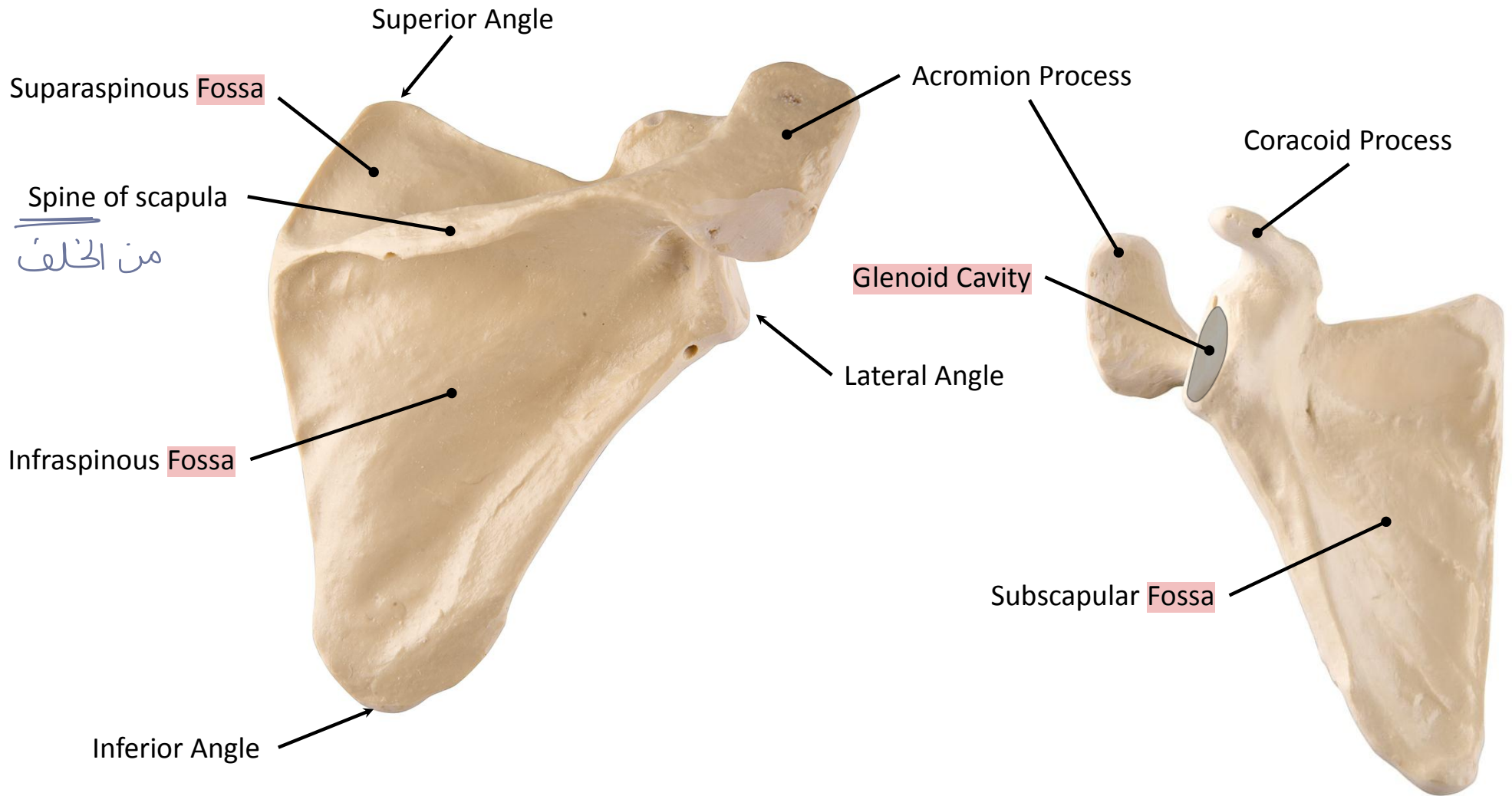
- long bone
- الوحيد الموجوده
- horizontal

\* لو انكسرت drop shoulder  
 بيوقع upper limb

- هي ايضاً الوحيده الرابطه بين axial skeleton و upper limb



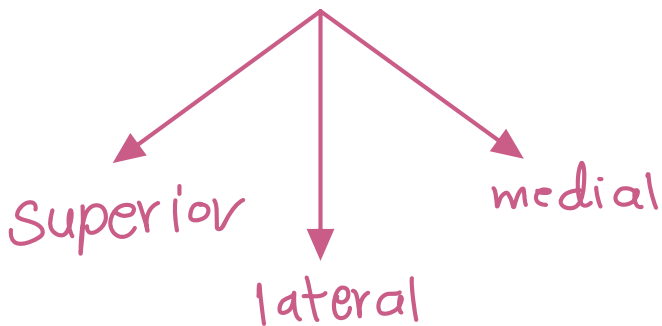
Right Clavicle



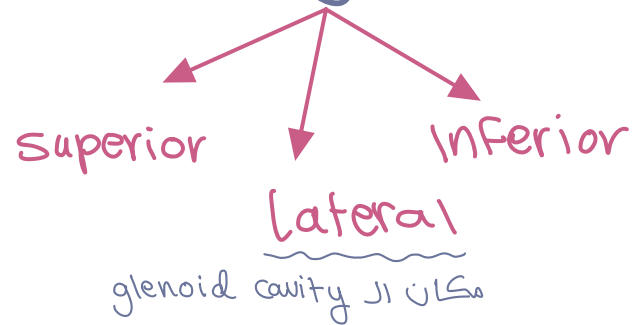
عزى Fossa 3  
1 من الامام  
2 من الخلف



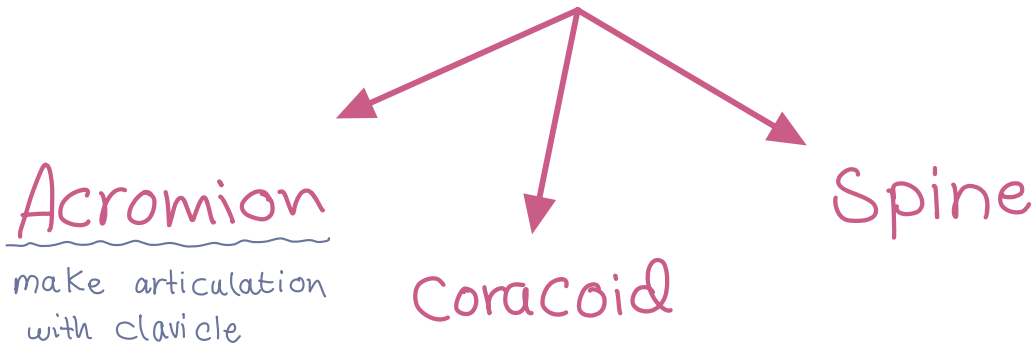
3 borders



3 angle



3 process



intertubercular sulcus (Bicipital groove) يكون للامام

humerus bone

جھو ار medial

Head

Greater Tuberosity = greater tubercle

Lesser Tuberosity = lesser tubercle

Anatomical Neck

Surgical Neck

Body (Shaft)

Deltoid tuberosity  
بٲكون rough

Coronoid Fossa

Radial Fossa

Medial Epicondyle

Lateral Epicondyle

بيعري قٲيه nerve  
اسه ulnar nerve

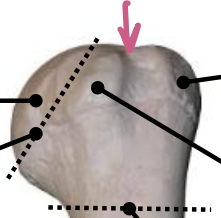
Trochlea

Capitulum

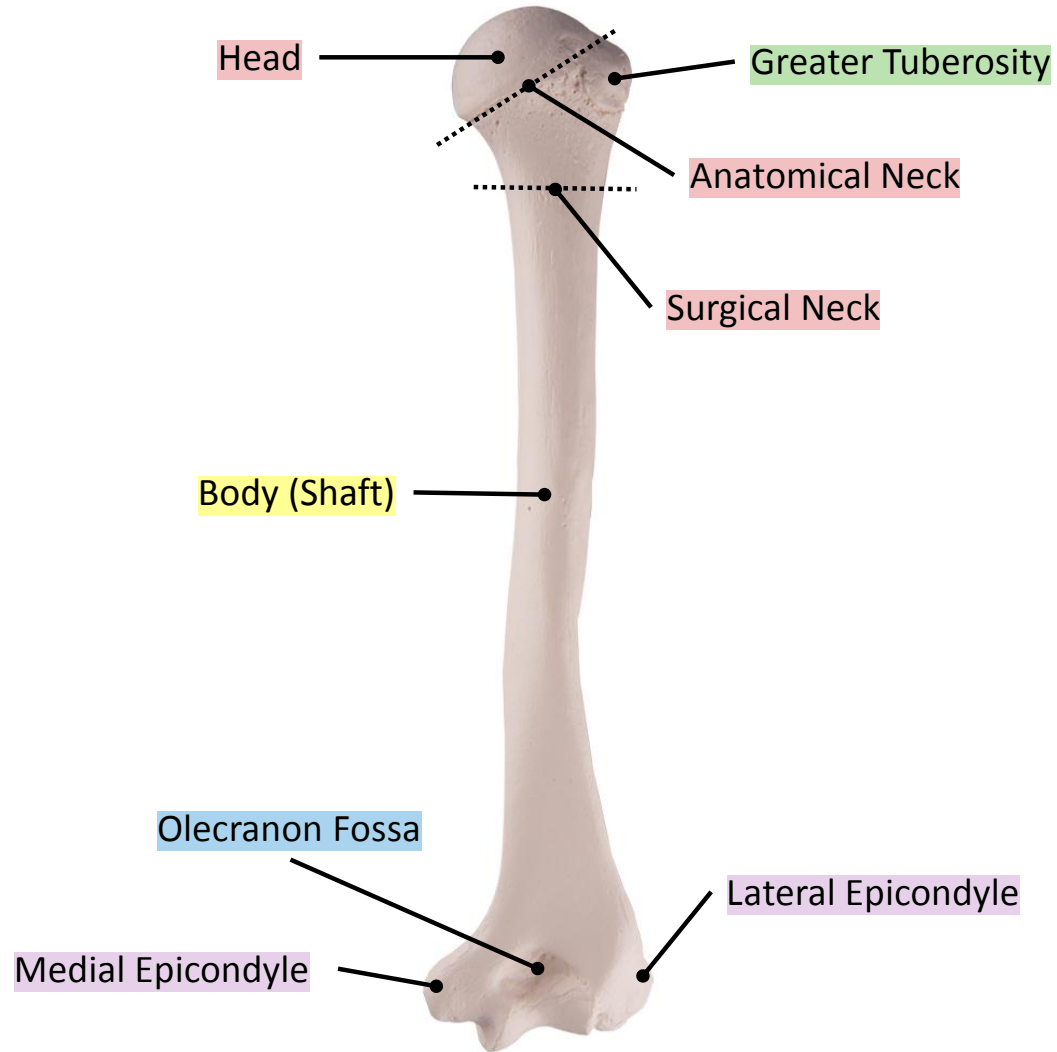
شكل بٲكره

رأس

مدوره



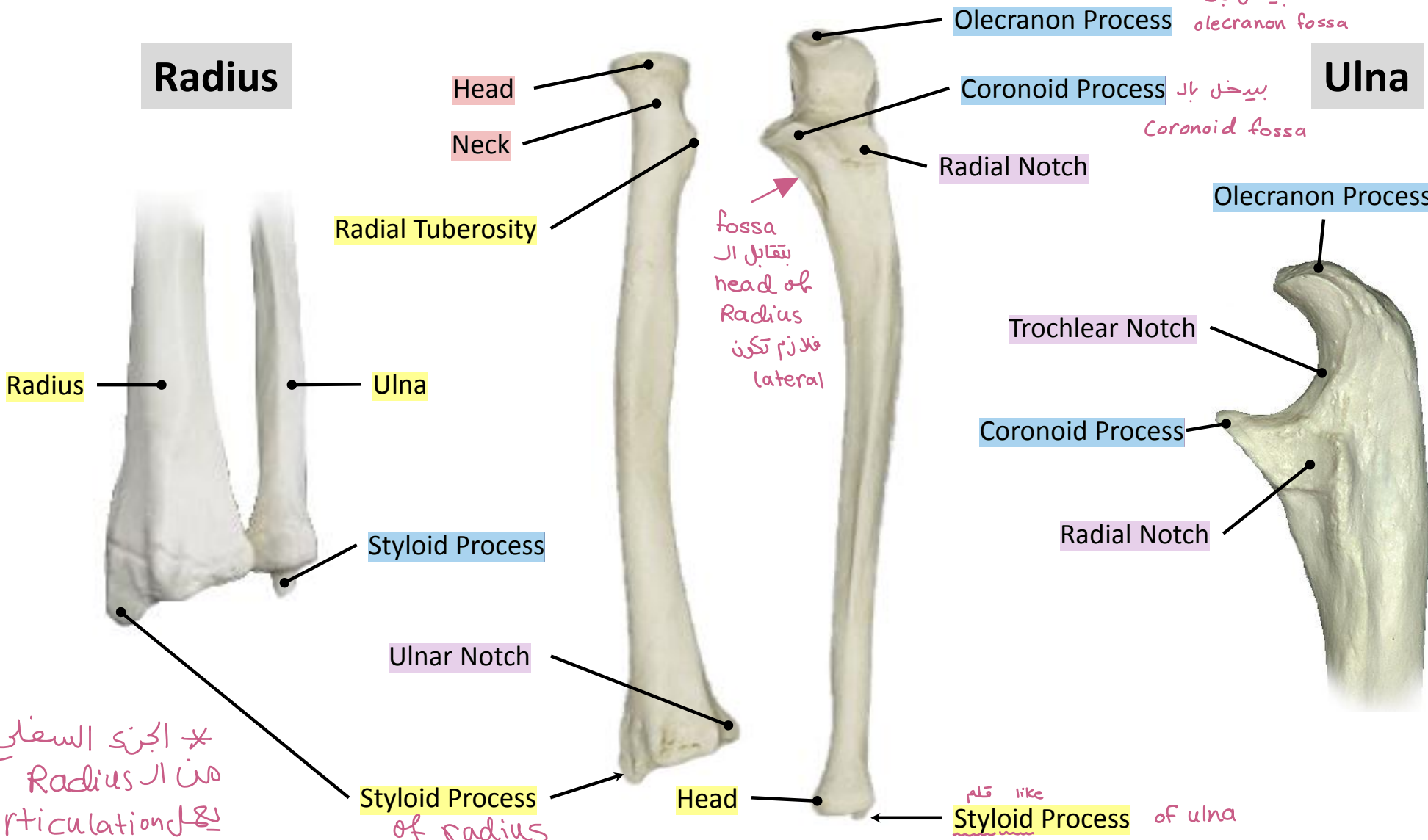






# Radius

# Ulna



Head

Neck

Radial Tuberosity

Radius

Ulna

Styloid Process

Ulnar Notch

Styloid Process of radius

Head

Olecranon Process

Coronoid Process

Radial Notch

Olecranon Process

Trochlear Notch

Coronoid Process

Radial Notch

Styloid Process

of ulna

بيخ بال  
olecranon fossa

بيخ بال  
Coronoid fossa

fossa  
يتقابل ال  
head of  
Radius  
فلازم تكون  
lateral

الجزء السفلي  
من ال Radius  
مع articulation

like  
قلم

Scaphoid 11 go  
Lunate 9

Olecranon Process

Trochlear Notch

Coronoid Process

Head

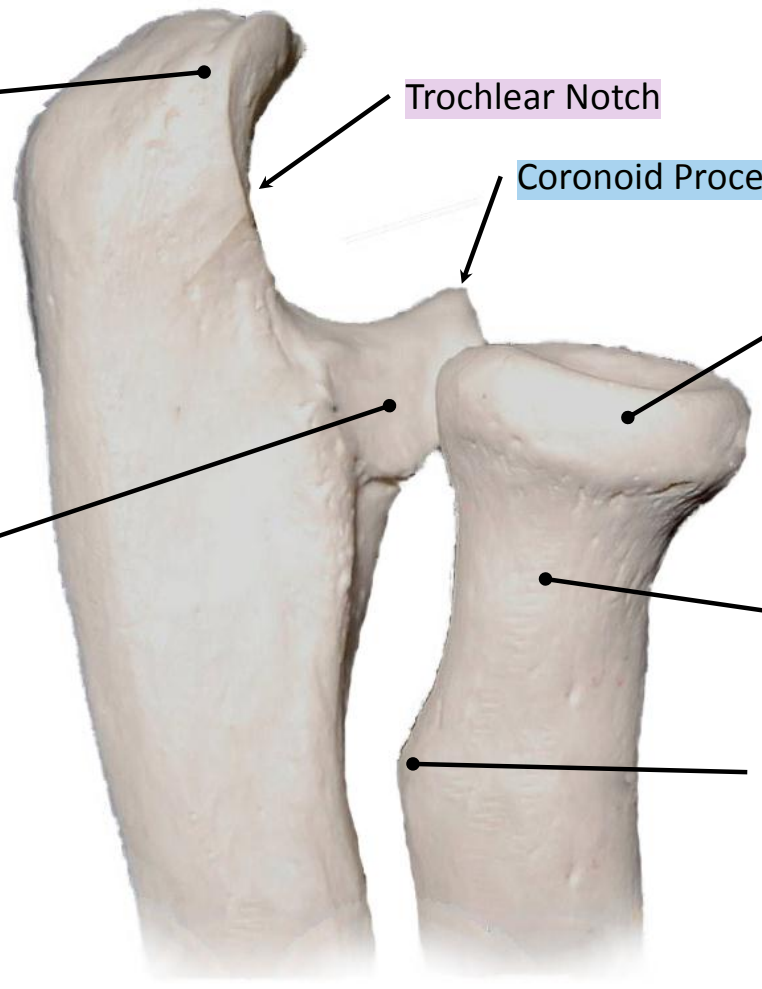
Radial Notch

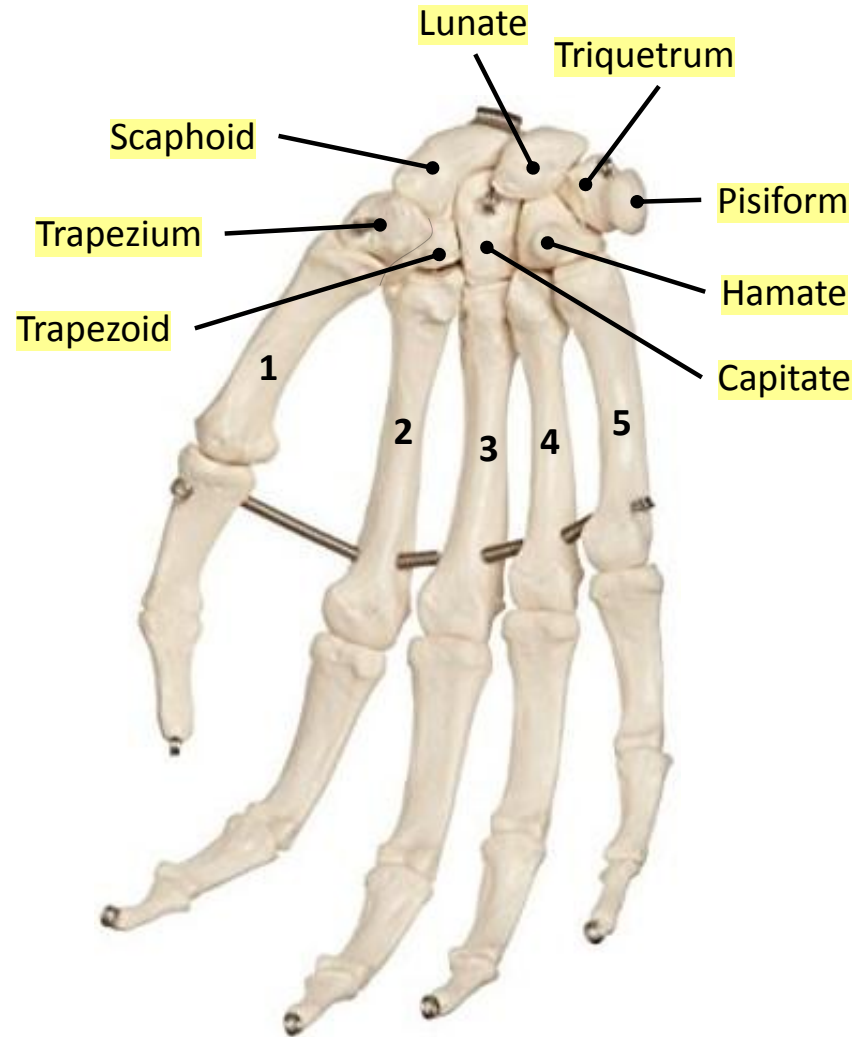
Neck

Radial Tuberosity

Ulna

Radius





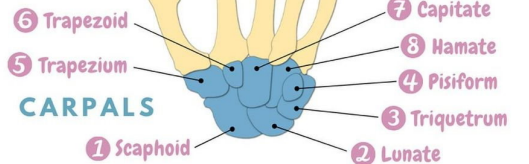
\* لِسْعِلِ الْيَدِ

## The Hand Bones

MNEMONIC

### PHALANGES

### META-CARPALS



1 SHE 2 LOOKS 3 TOO 4 PRETTY  
 5 TRY 6 TO 7 CATCH 8 HER

