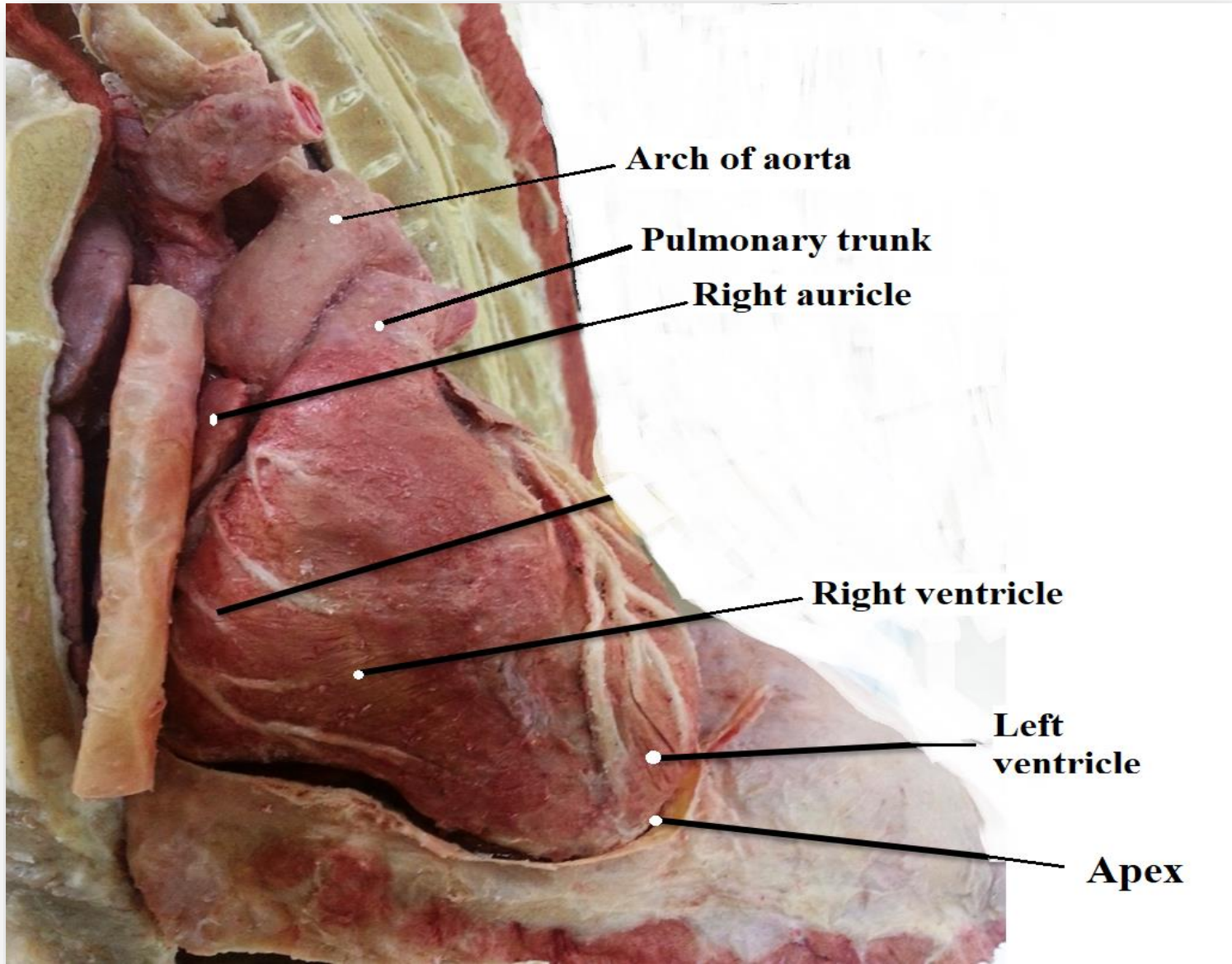


Practical (1)
Anatomy of Heart

Dr. Amany Swilam

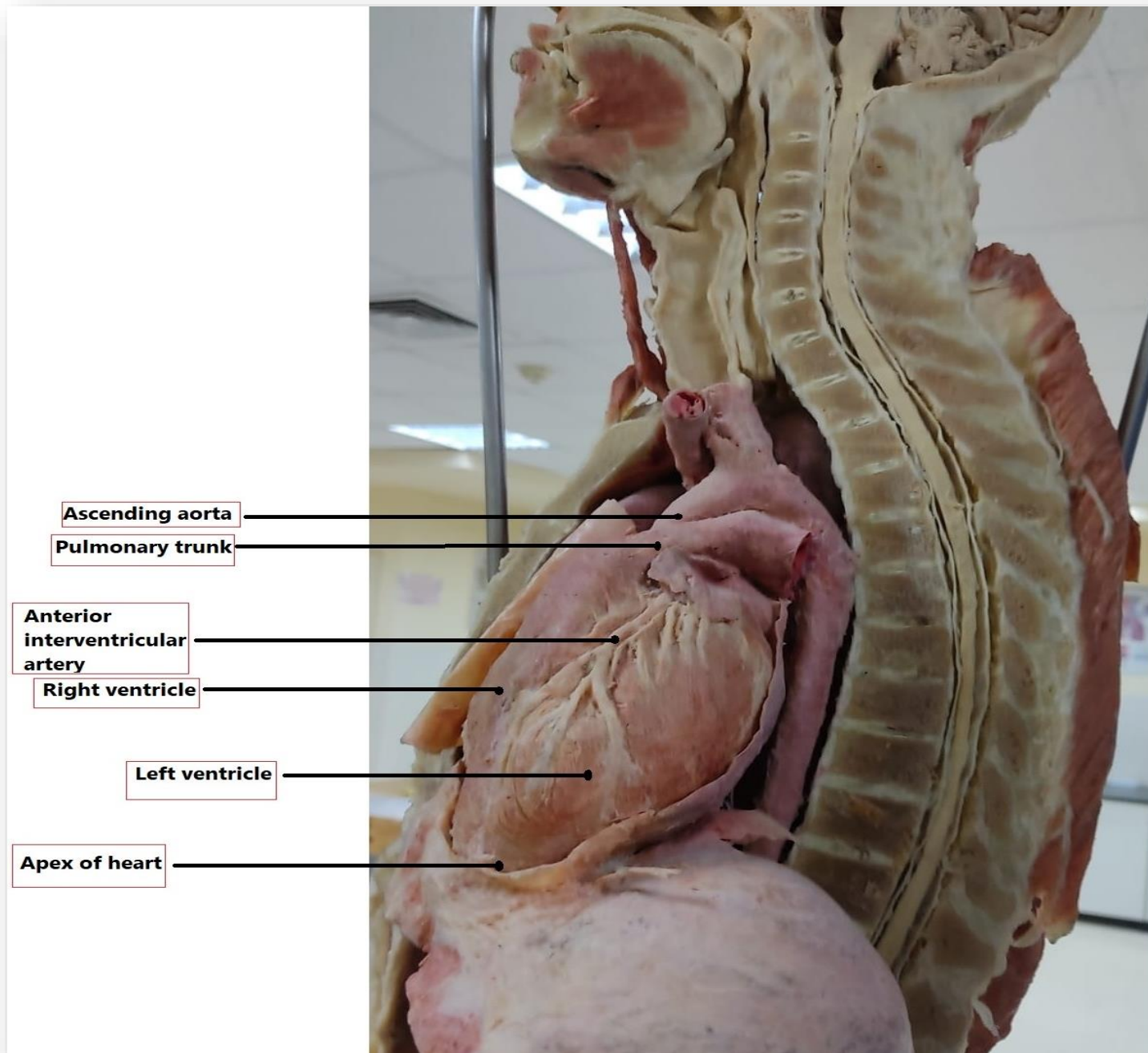


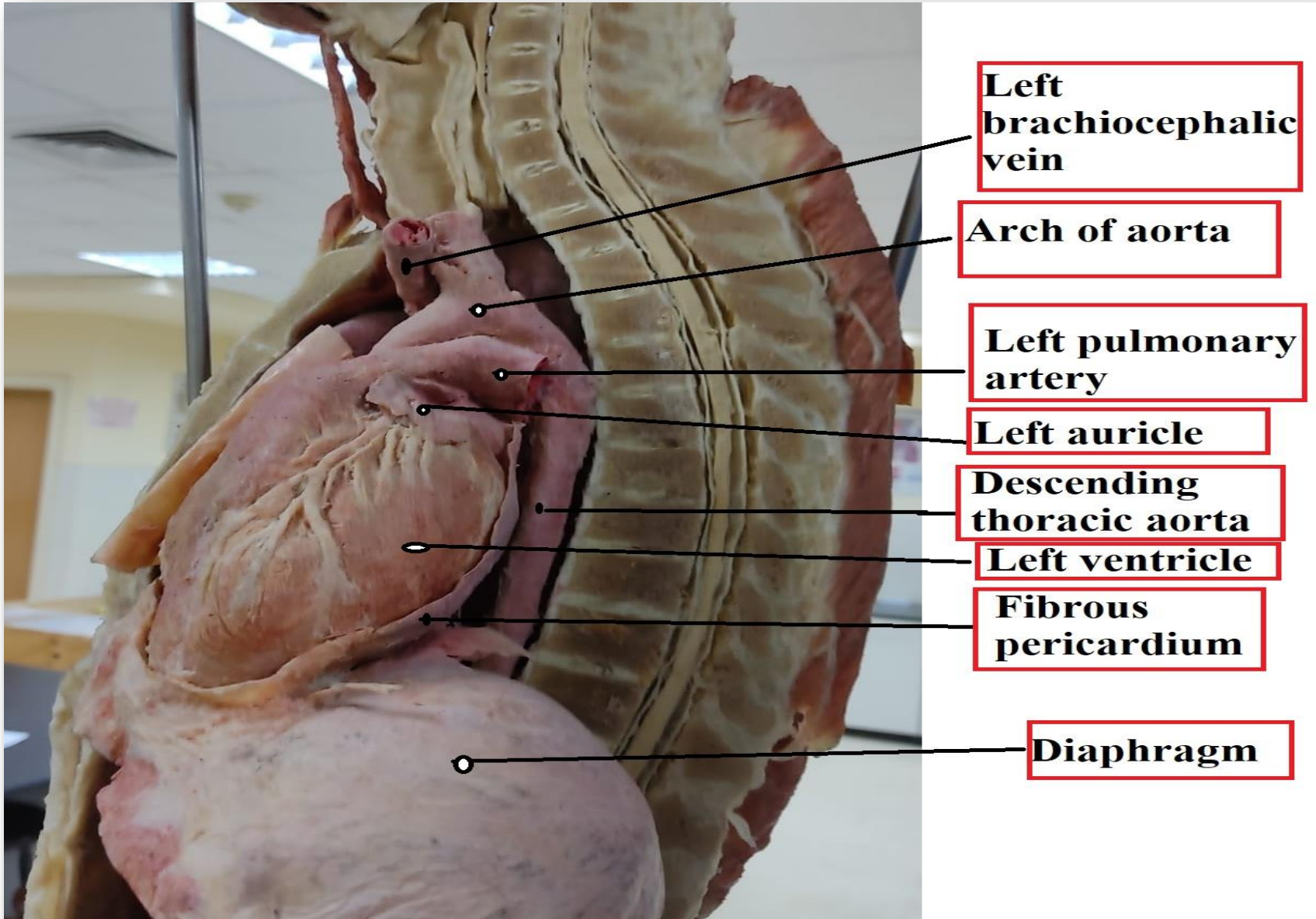
**Left
brachiocephalic
vein**

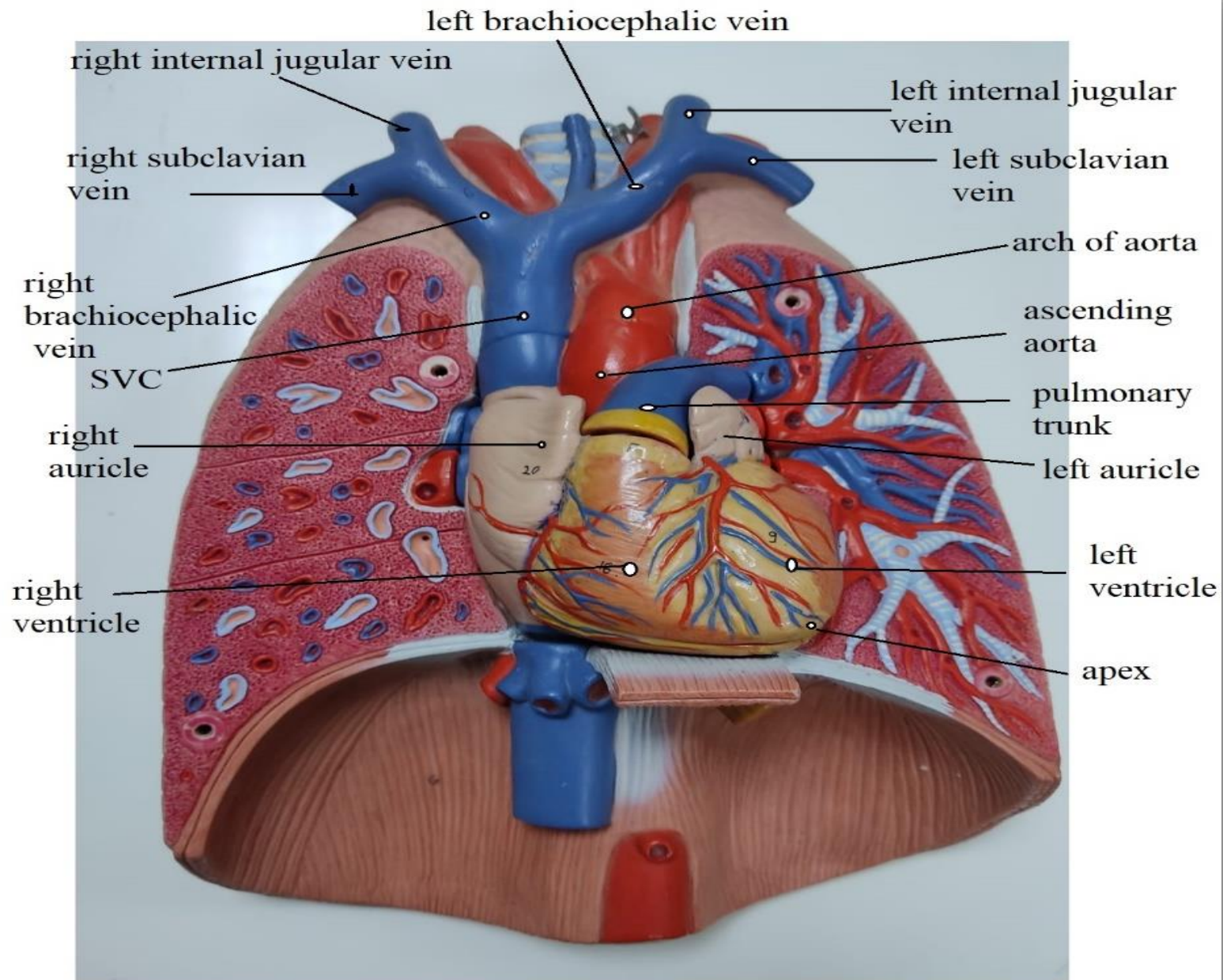
SVC

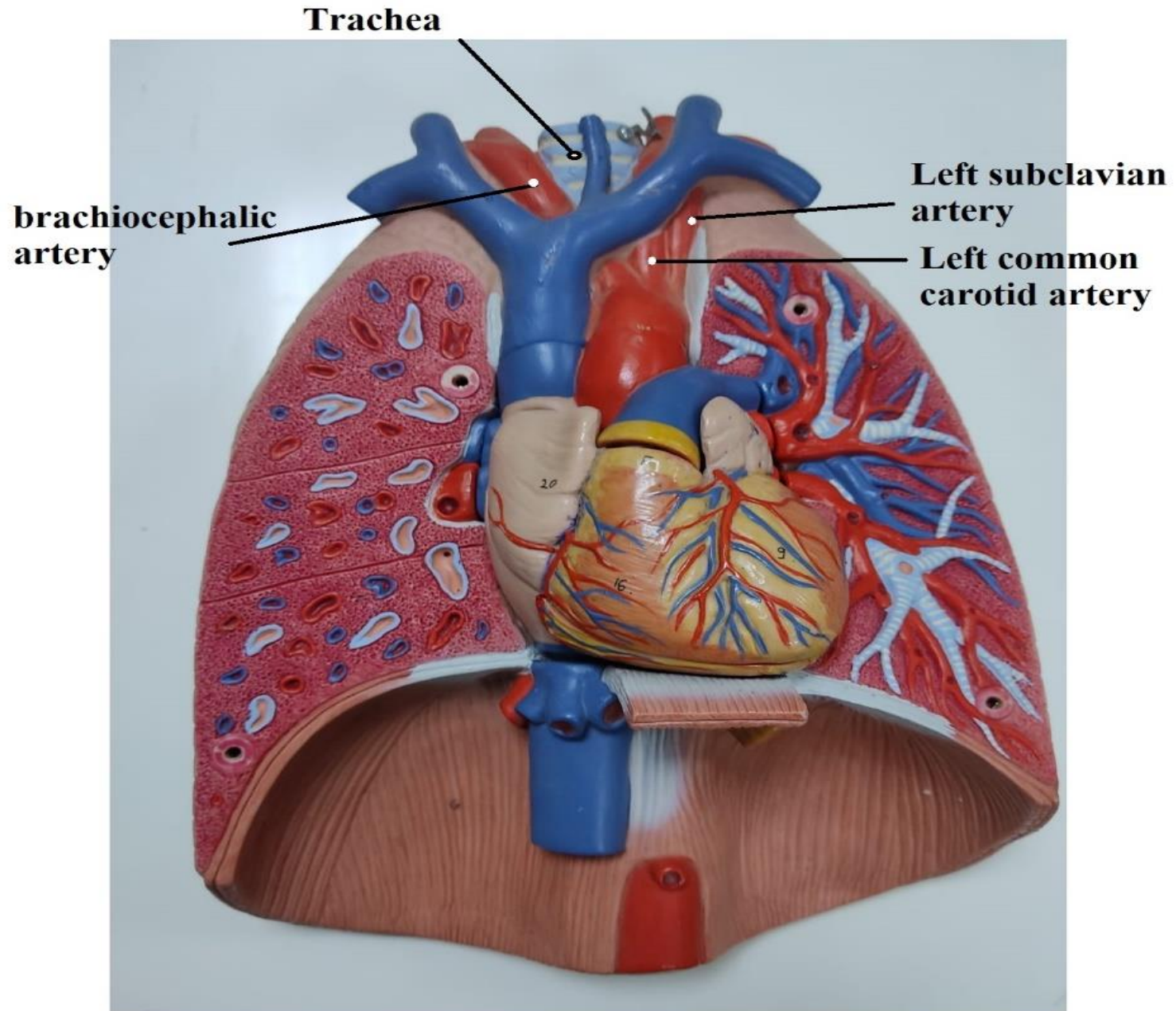
**Ascending
aorta**

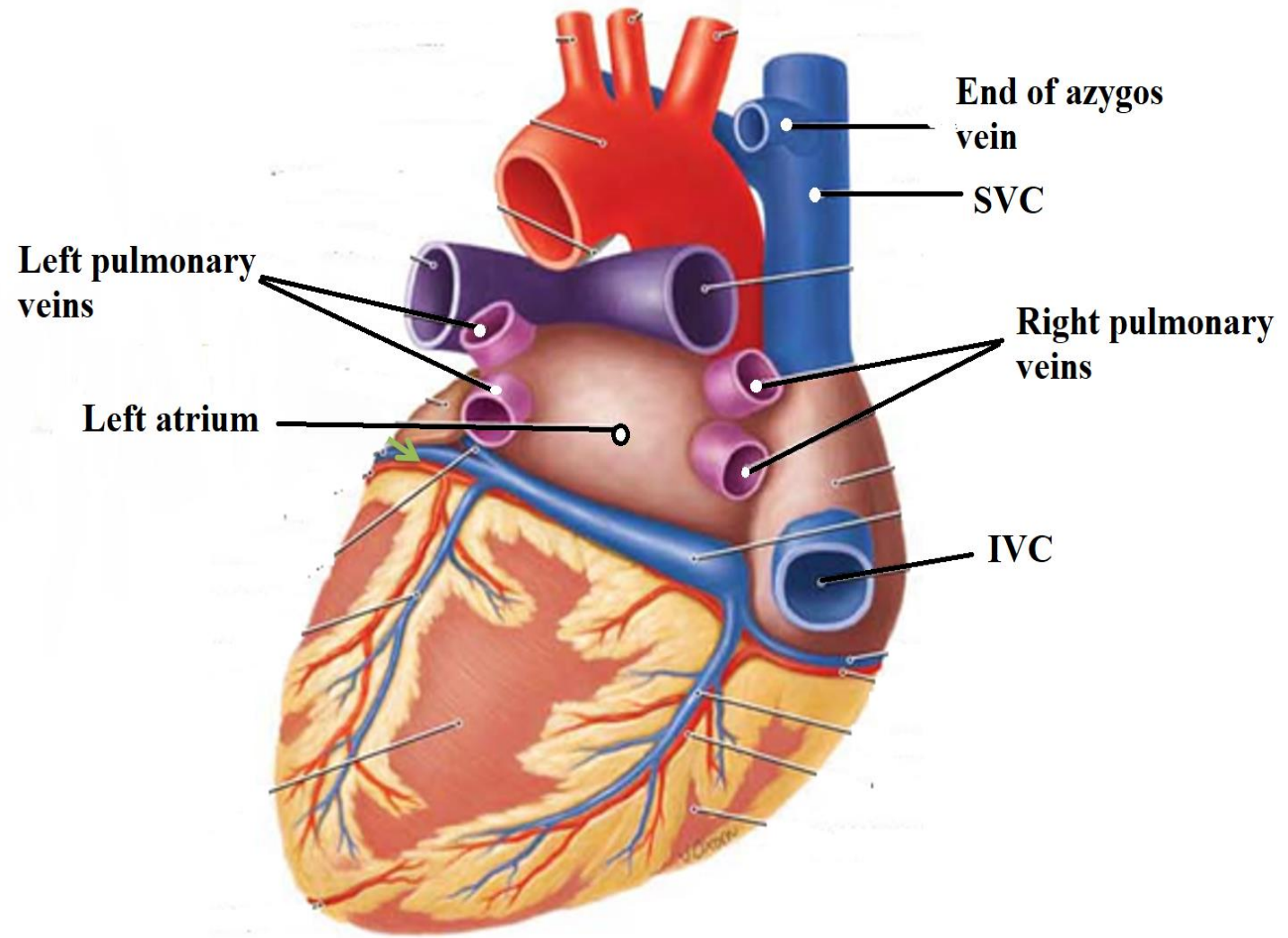


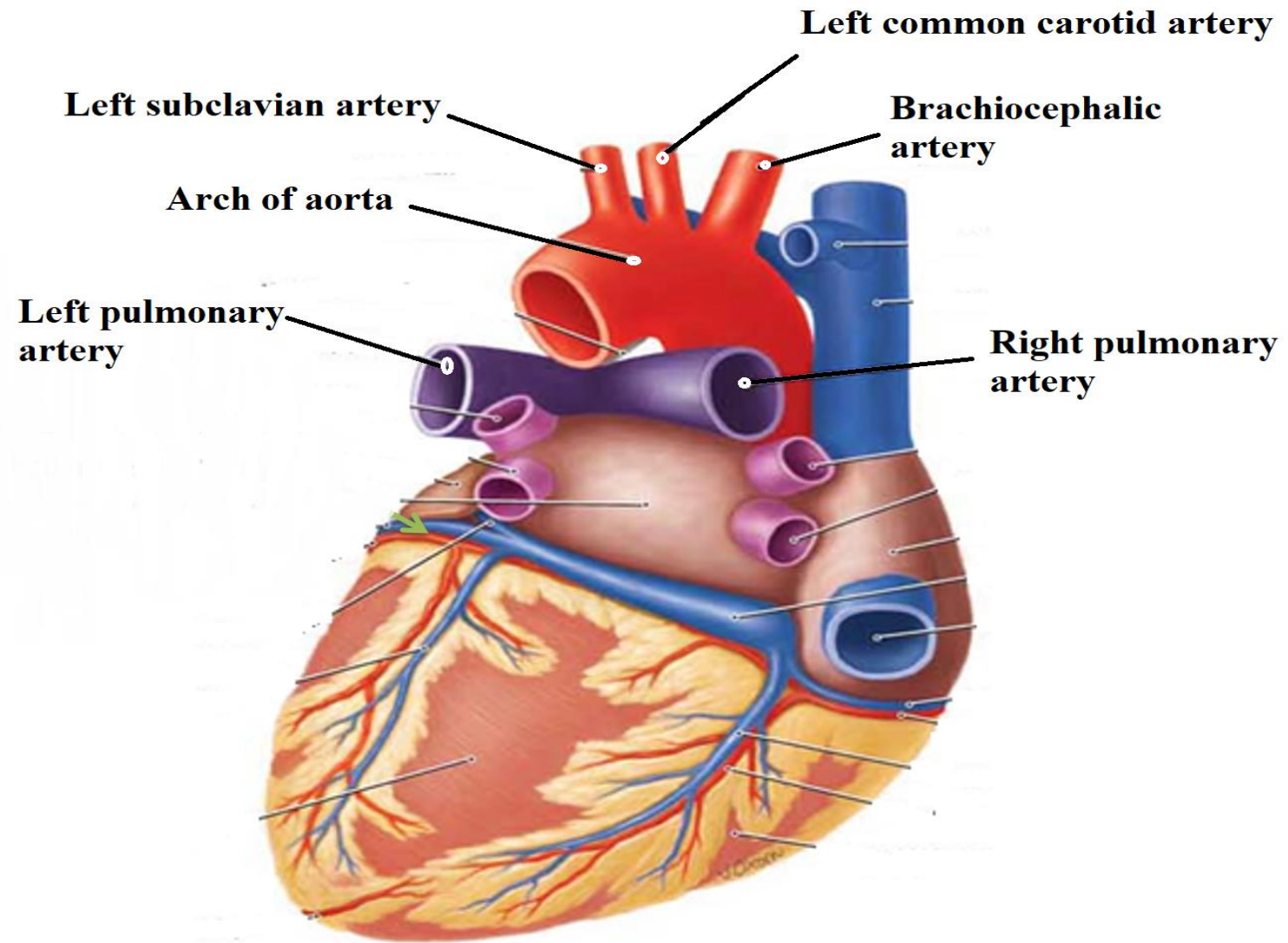










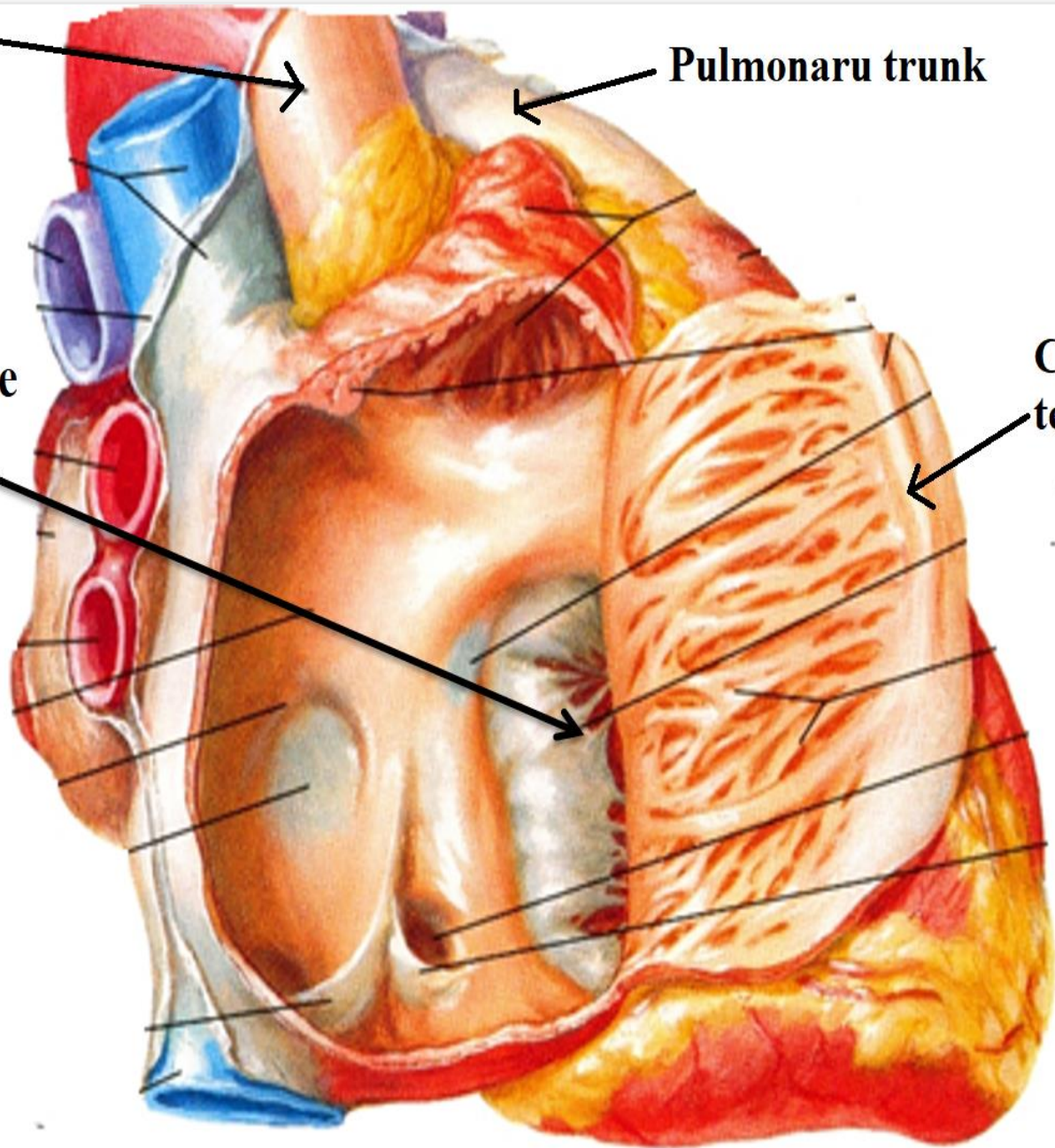


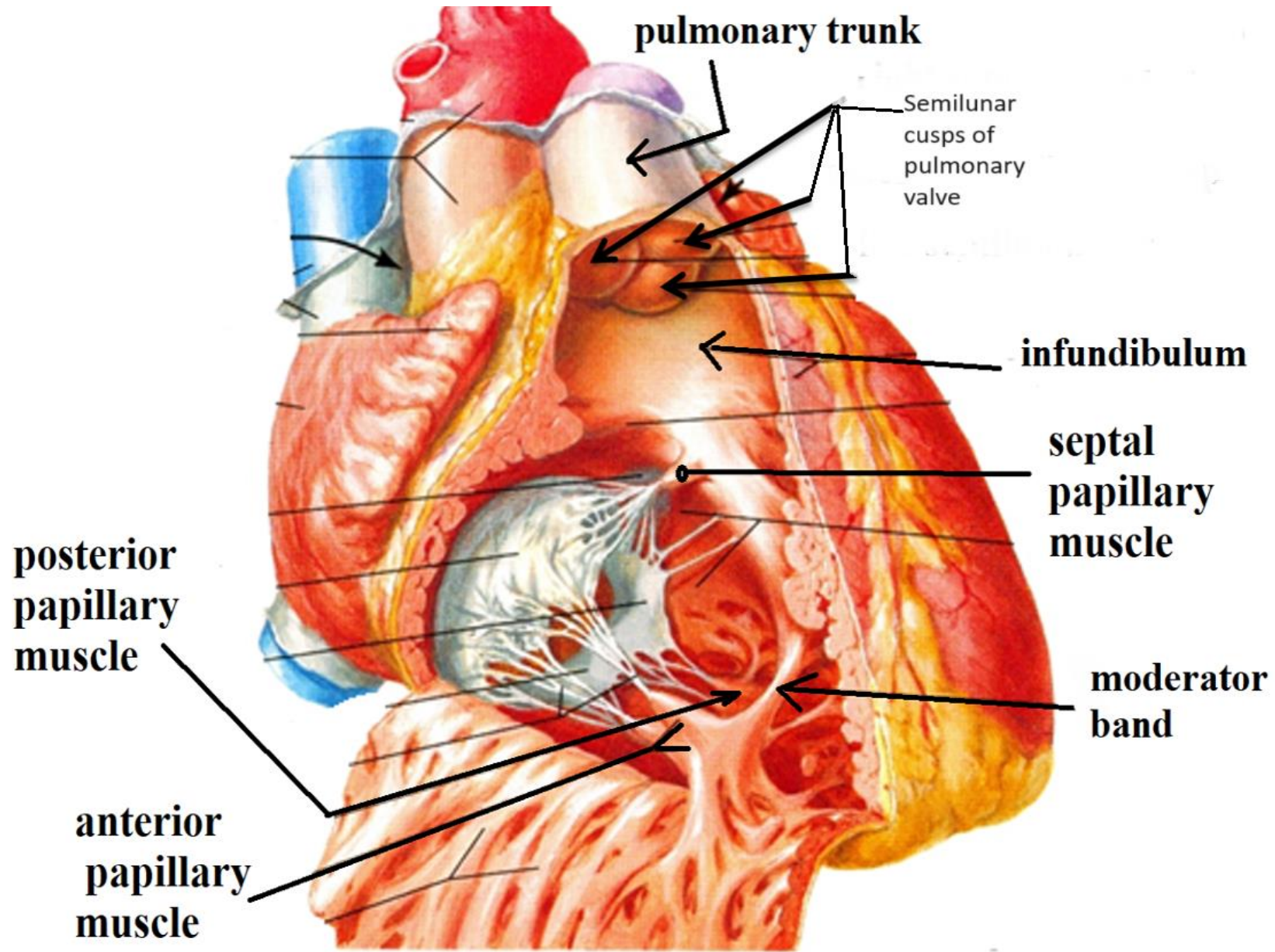
Ascending aorta

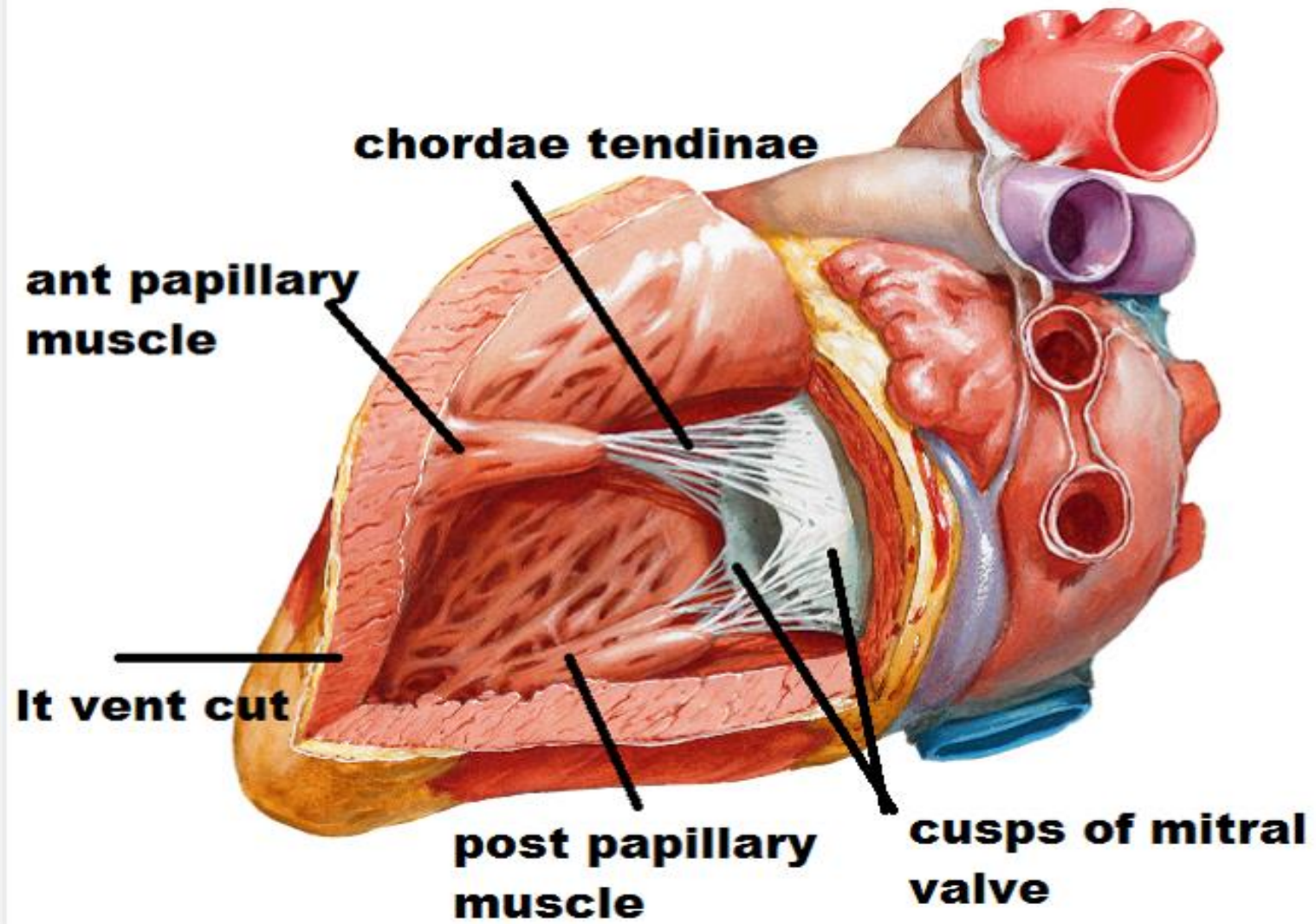
Pulmonaru trunk

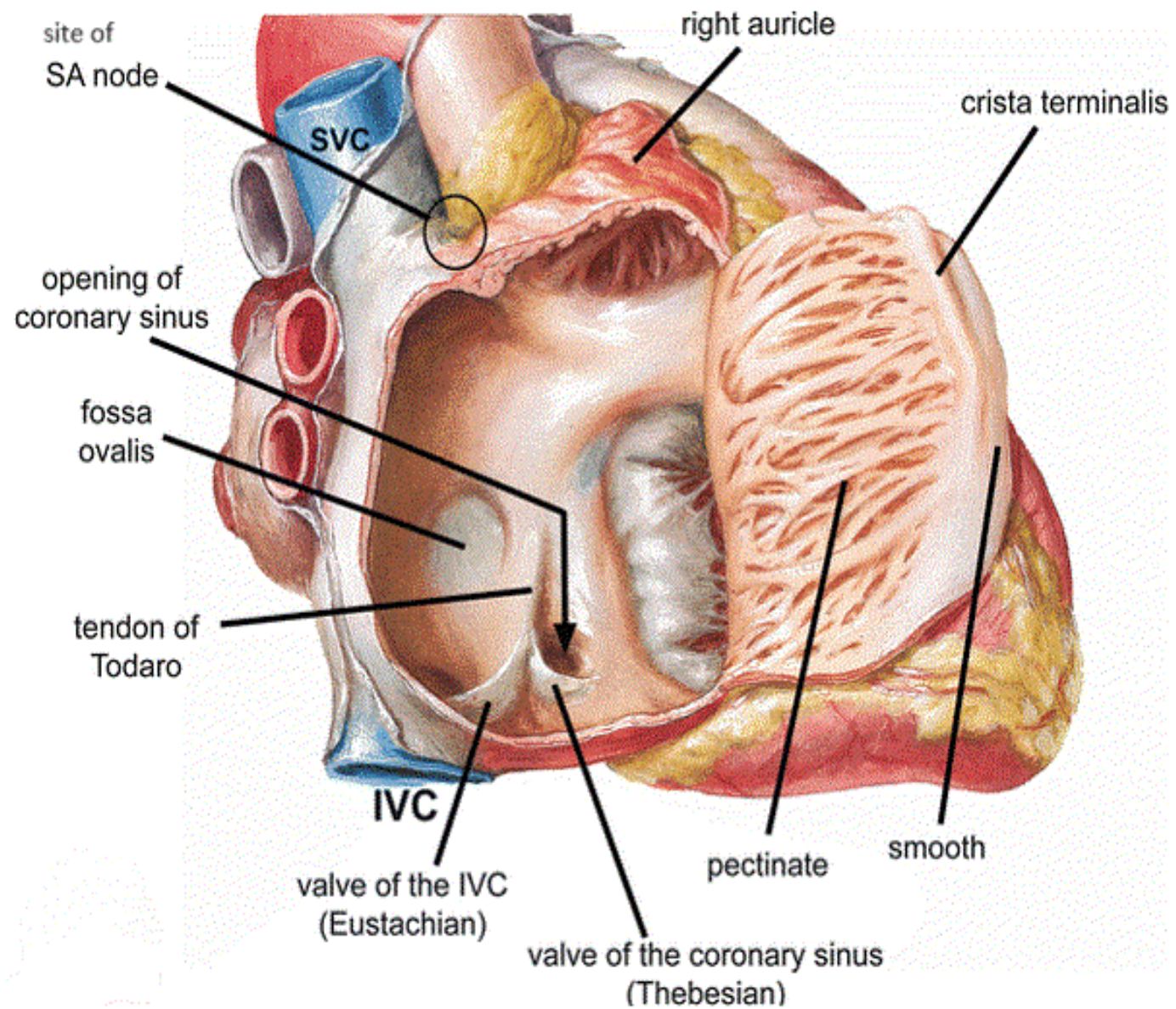
Tricuspid valve

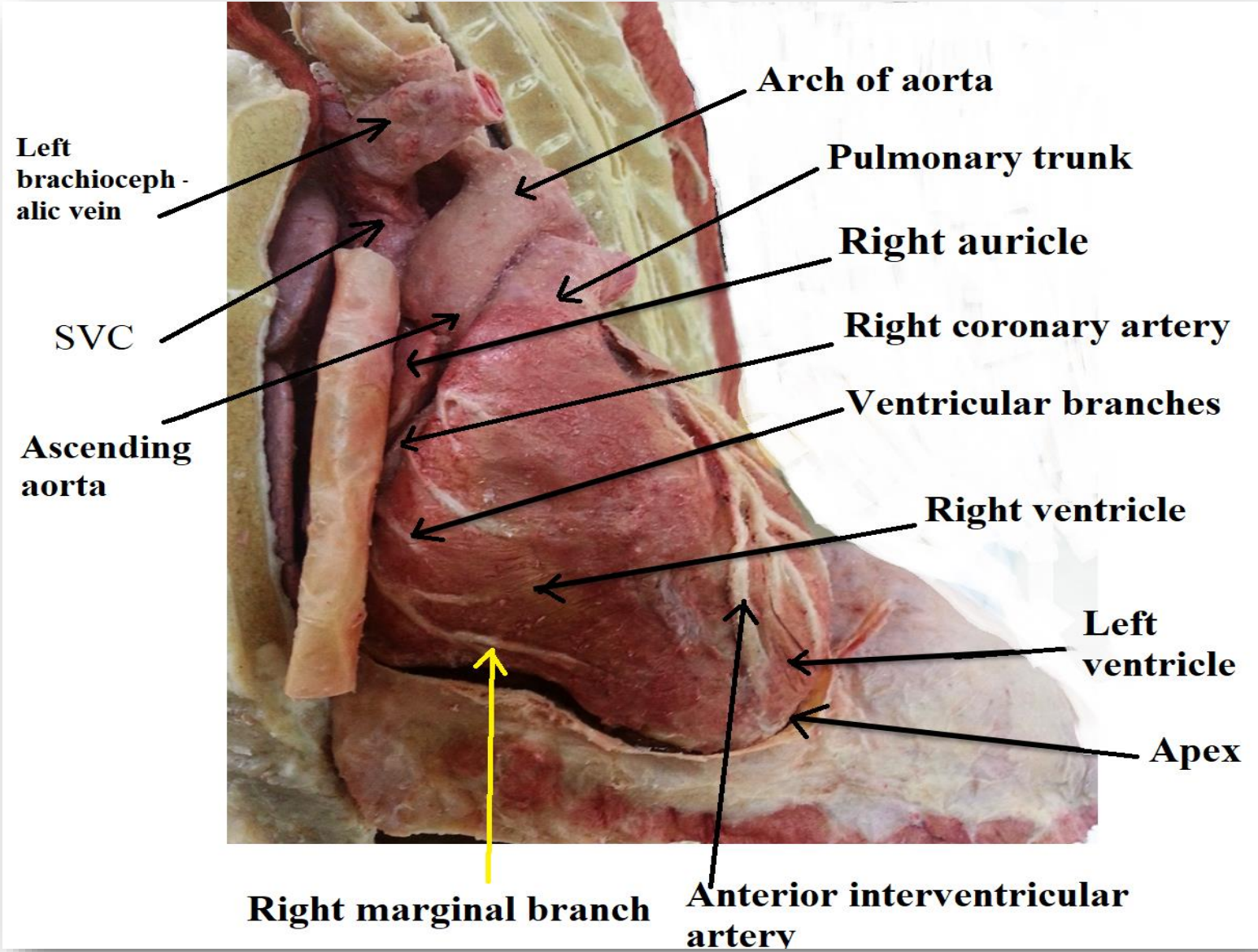
Crista terminalis



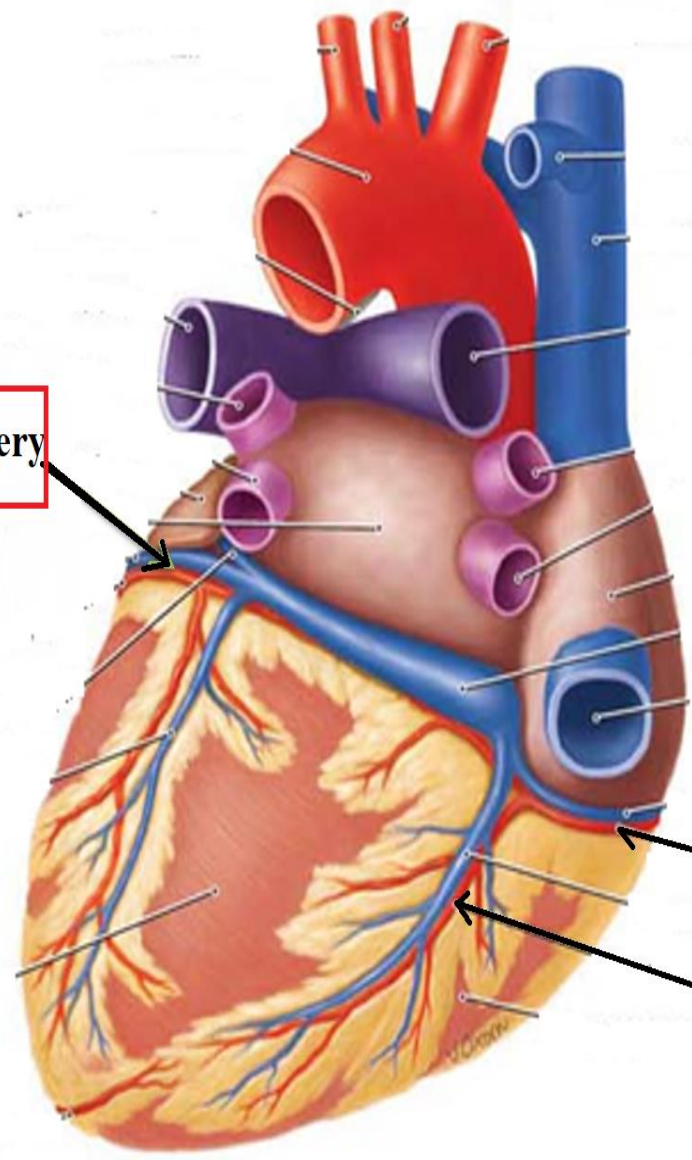








Circumflex artery



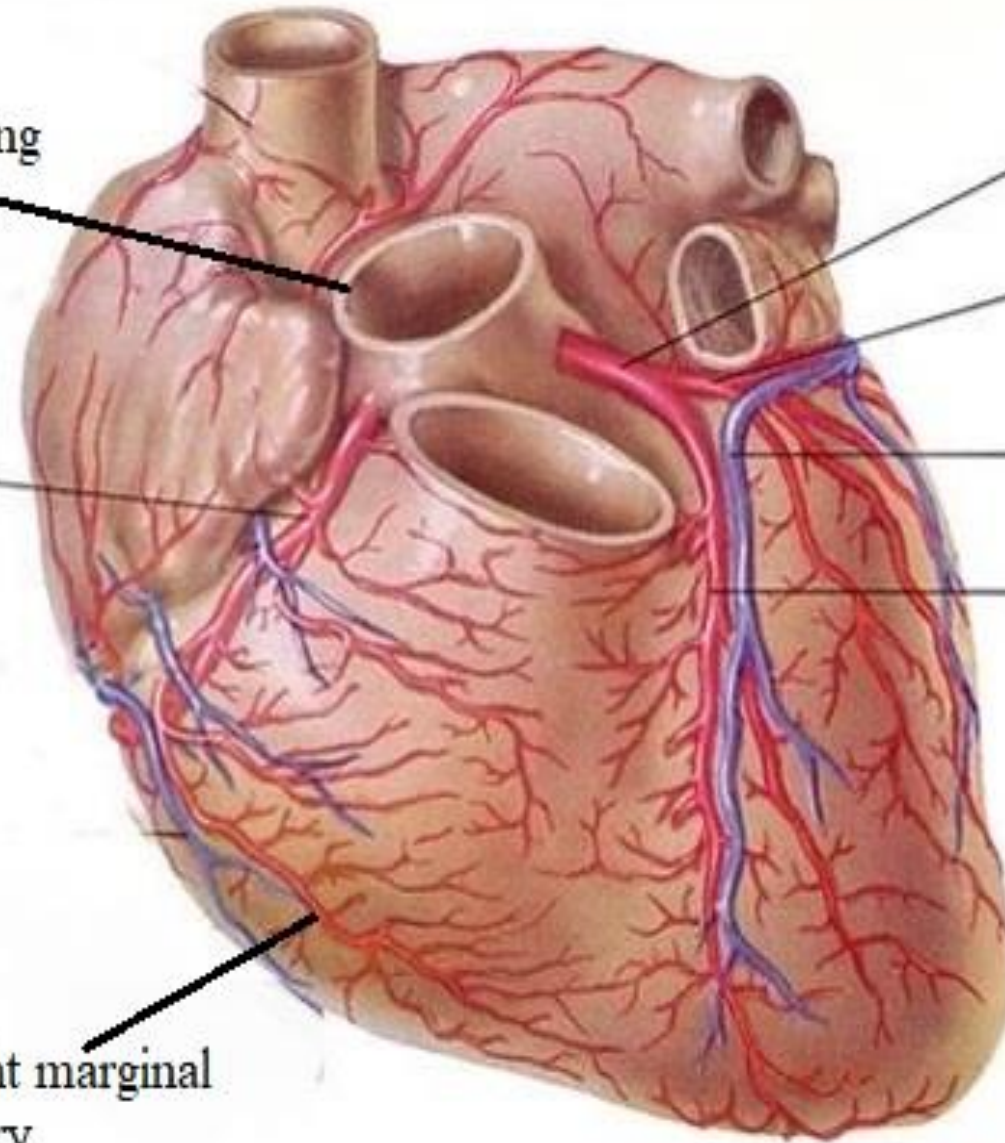
Right coronary artery

Posterior interventricular artery

Ascending
aorta

RIGHT
CORONARY
ARTERY
RCA

Right marginal
artery

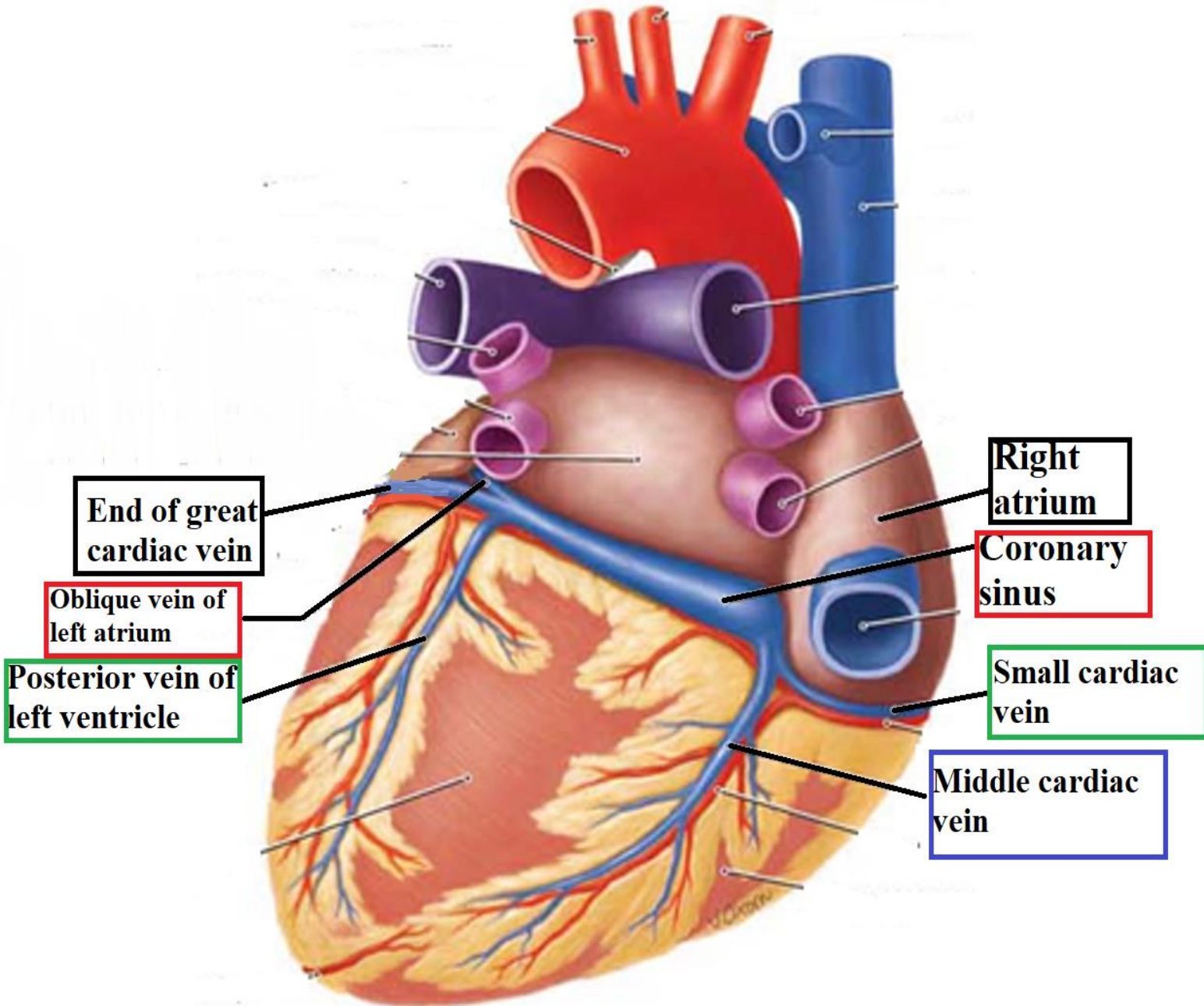


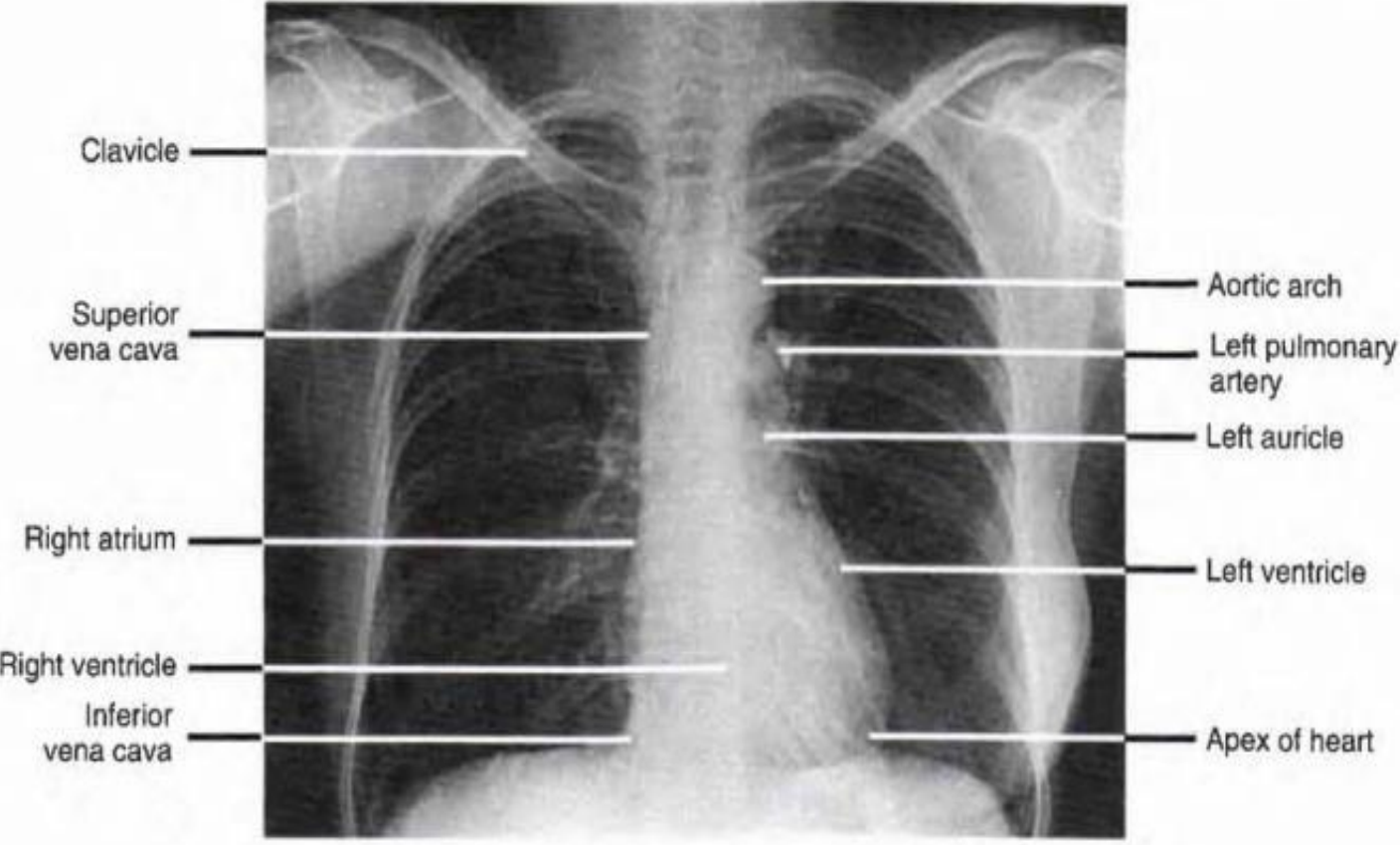
L. CORONARY ARTERY

CIRCUMFLEX BRANCH OF
L. CORONARY ARTERY
LCx

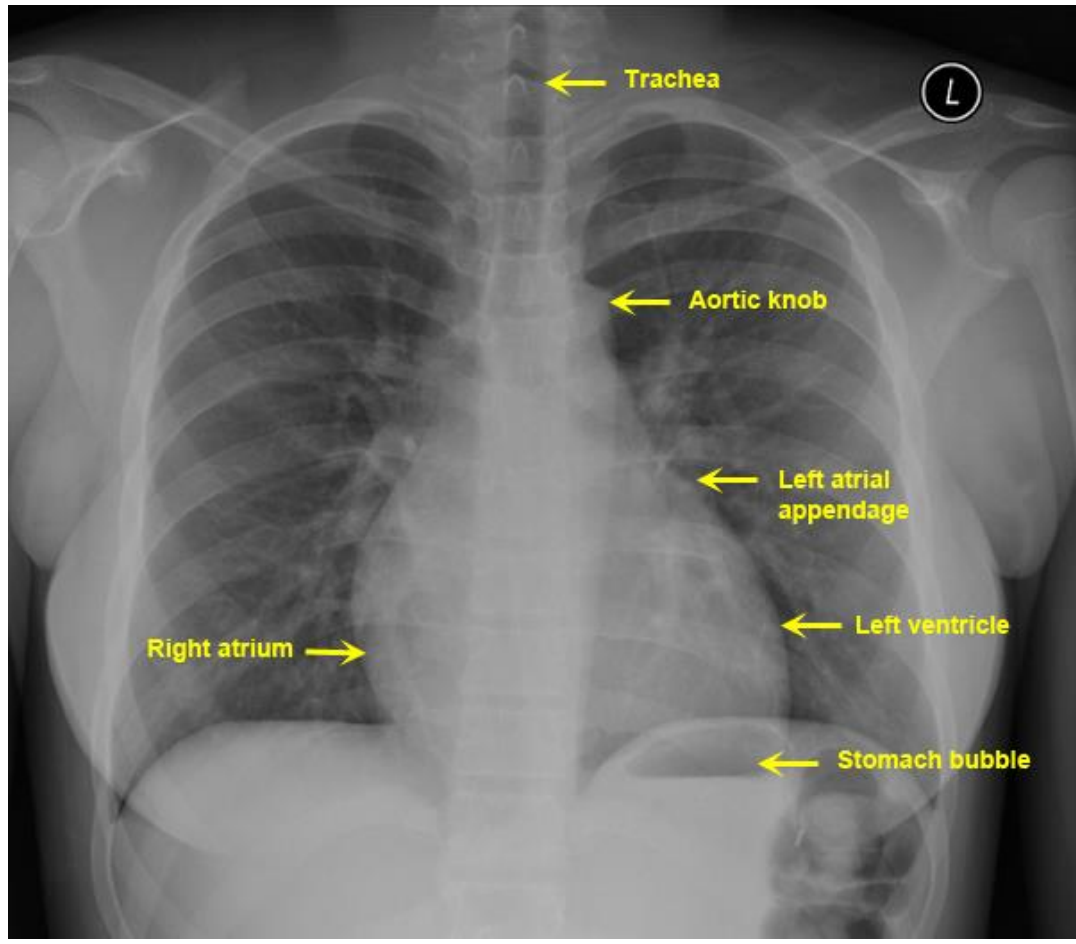
GREAT CARDIAC VEIN

ANTERIOR
INTERVENTRICULAR
(ANTERIOR DESCENDING)
BRANCH OF L.
CORONARY ARTERY

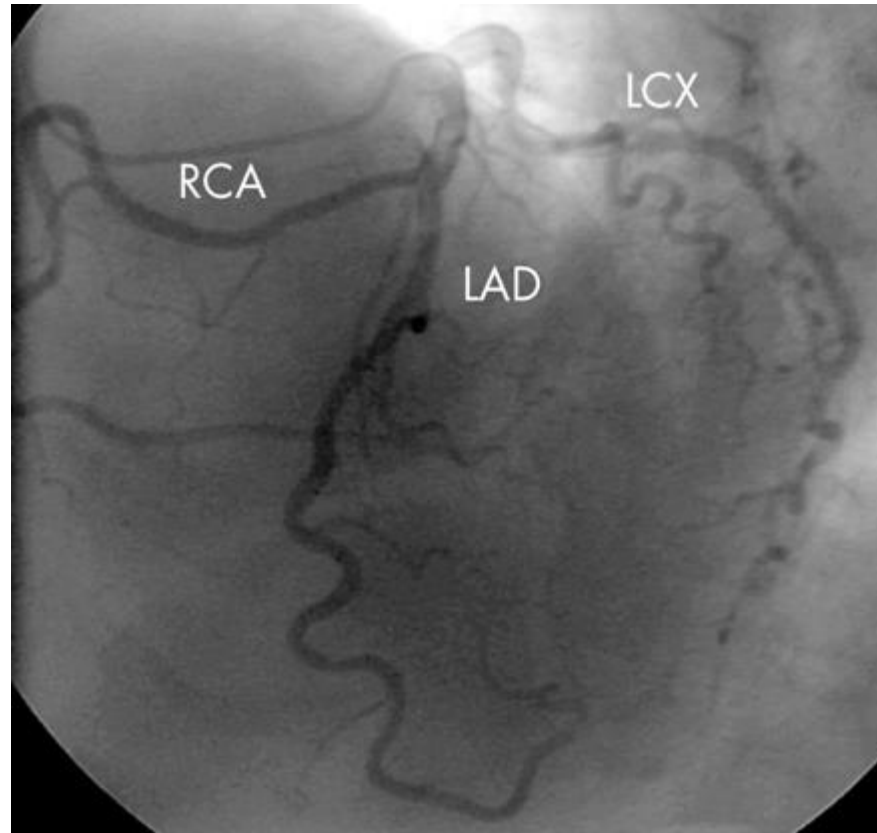




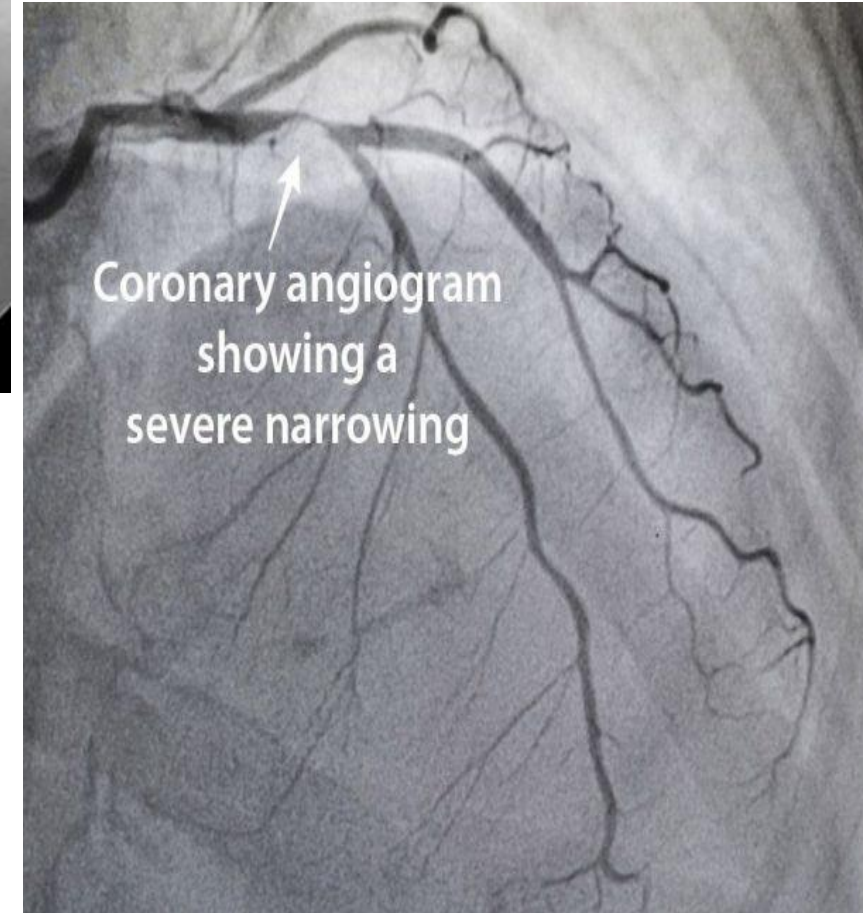
Posterior-anterior radiograph of the thorax showing the heart and great vessels.



Coronary angiography is a procedure that uses a special dye (contrast material) and x-rays to see how blood flows through the arteries in your heart. Coronary angiography is performed to detect obstruction in the coronary arteries of the heart.



RCA; Right Coronary Artery
LCA; Left Circumflex Artery
LAD; Left anterior descending (anterior interventricular artery)



A photograph of a 'Thank you' card, a pen, and wrapped gifts on a marble surface. The card is white with the words 'Thank you' written in a purple cursive font. A black pen with a white grip is positioned vertically to the right of the card. In the background, there are two wrapped gifts: one with a red and white striped ribbon and another with a white and red patterned ribbon. A bouquet of purple flowers is visible on the left side of the image.

Thank
you