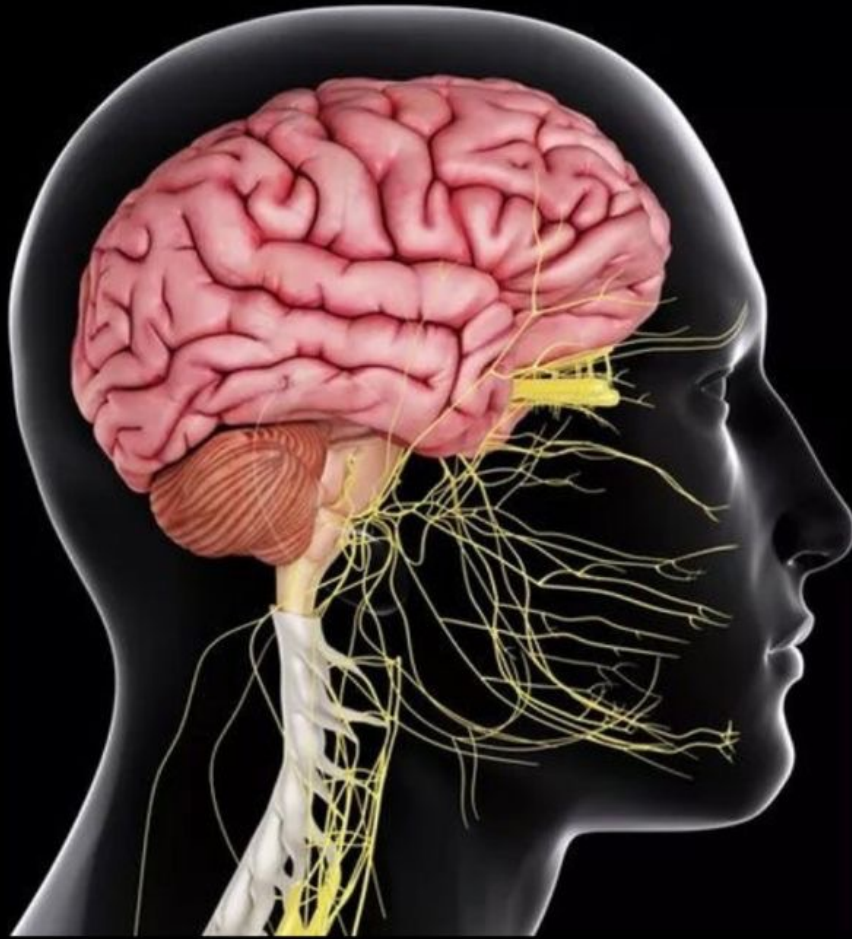




CENTRAL NERVOUS SYSTEM



SUBJECT : Anatomy

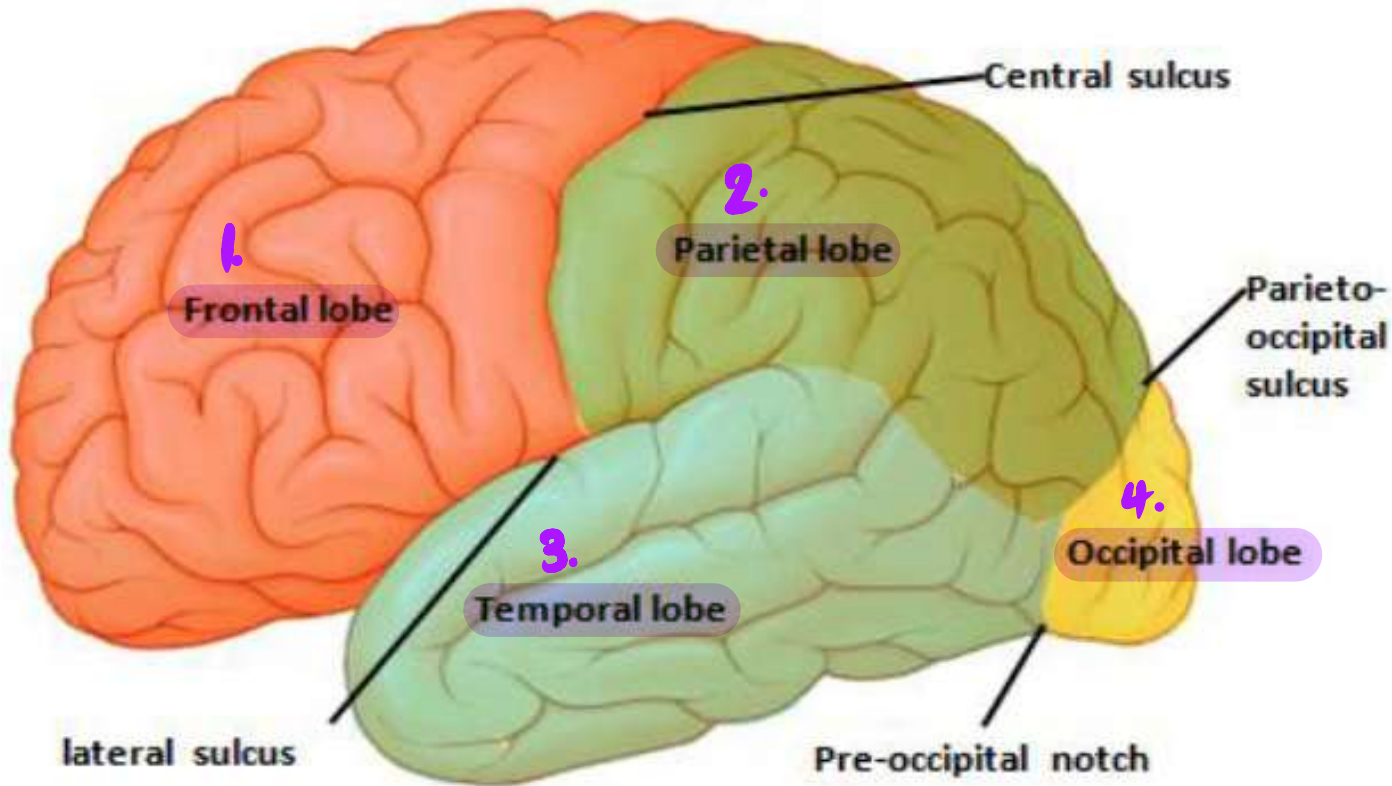
LEC NO. : Lab 2

DONE BY : Batool ALzubaidi

وَقُلْ رَبِّ زِدْنِي عِلْمًا

Practical section 2 CNS
3rd year

Lateral surface



هدول ال brain lobes الي بيينوا بال lateral surface

ال gyri هو ال brain tissue الموجود between 2 sulci اما ال sulcus هو الشق الي يفصل ال gyri عن بعض

LATERAL SURFACE OF THE BRAIN

قدامه ال frontal و وراه ال
parietal and occipital
بوصل لحد ال lateral sulcus

Superior frontal sulcus
ماشيين جوا ال frontal
lobe و قسموه ل 3 اجزاء

inferior frontal sulcus

بين ال frontal
and temporal

Anterior limb

Middle limb

جوا ال parietal lobe
بقسمه لجزئين

Intraparietal sulcus

Parieto occipital sulcus

Posterior limb

Postcentral Sulcus

Central Sulcus

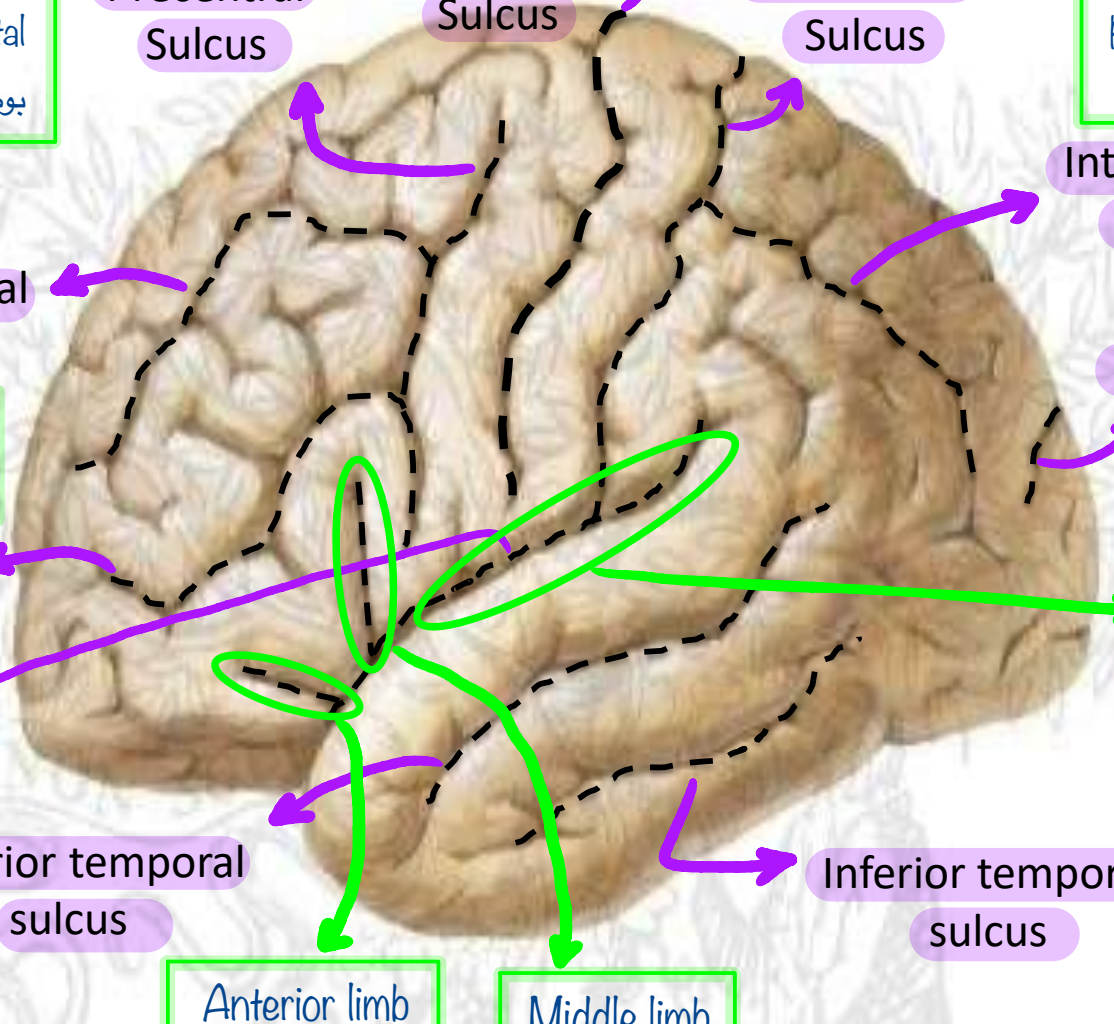
Precentral Sulcus

Inferior temporal sulcus

Superior temporal sulcus

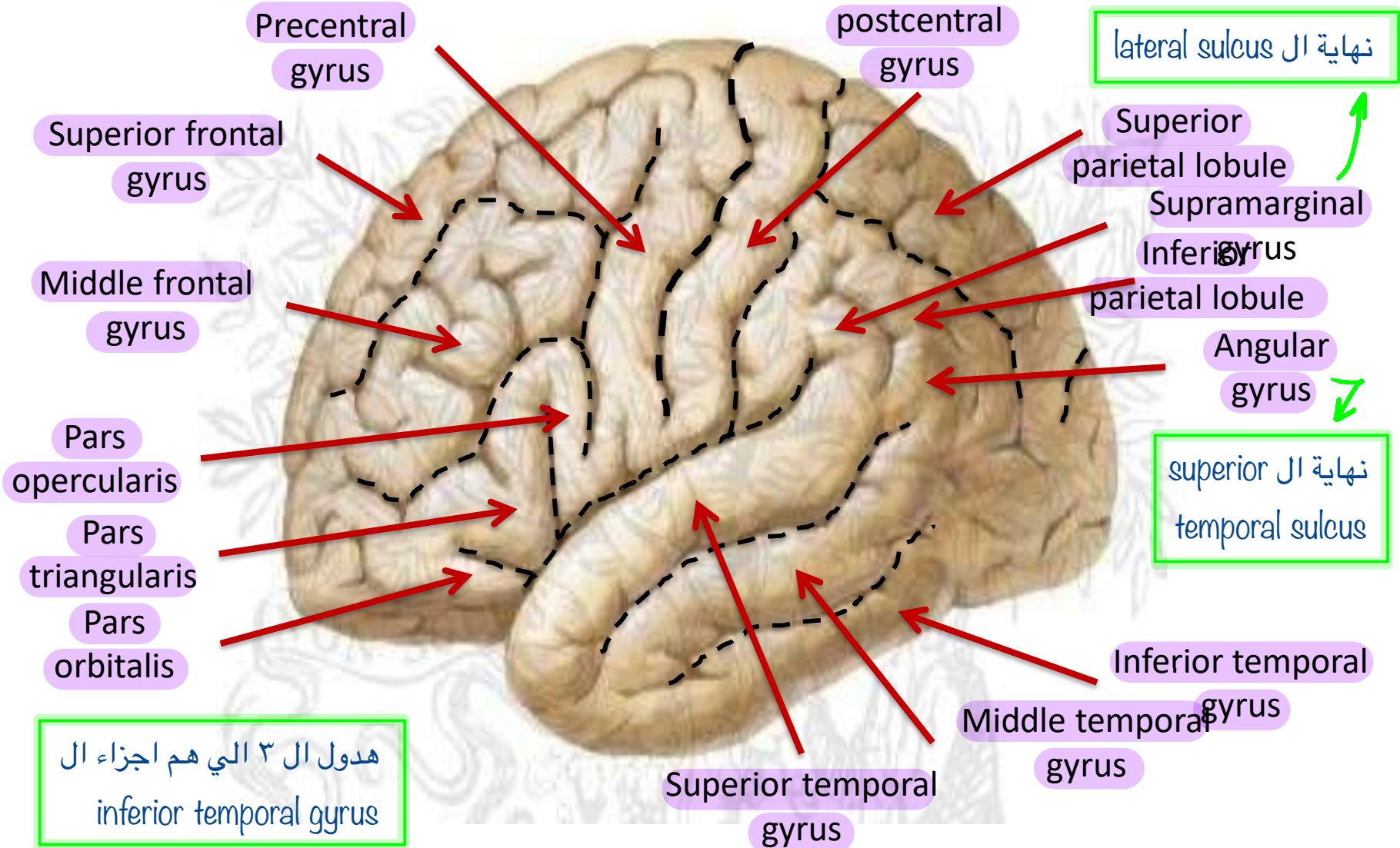
Lateral sulcus

Superior frontal sulcus

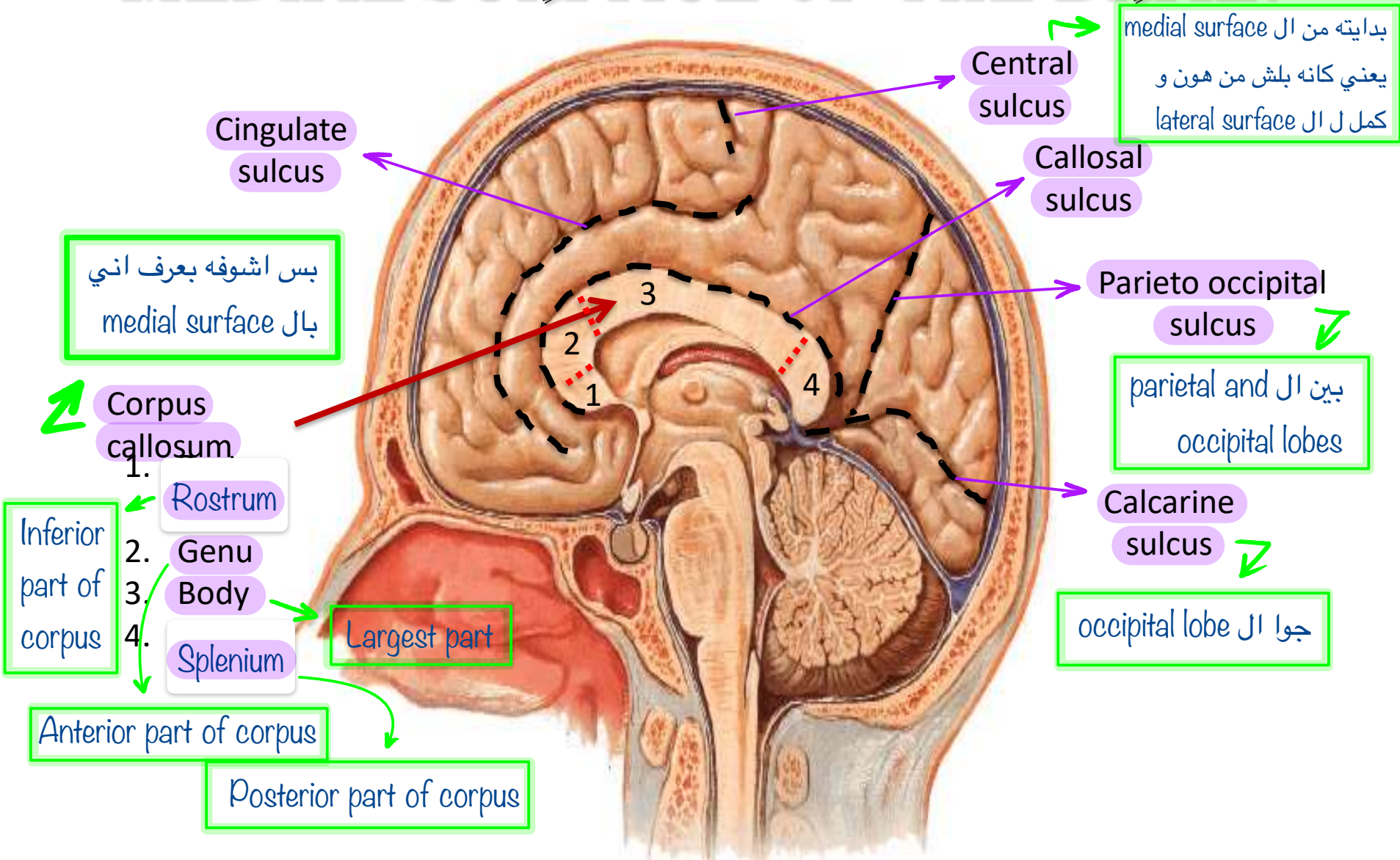


اعرفوا ال gyrus جاي بين اي sulci بالزبط لانه ممكن يجي سؤال شو هو ال gyrus الي بين كذا و كذا

LATERAL SURFACE OF THE BRAIN



MEDIAL SURFACE OF THE BRAIN



MEDIAL SURFACE OF THE BRAIN

حوالين ال central



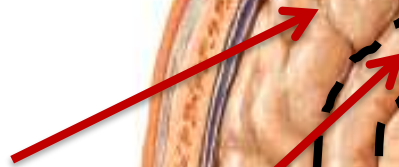
Paracentral lobule



Precuneus



Medial frontal gyrus



Cuneus



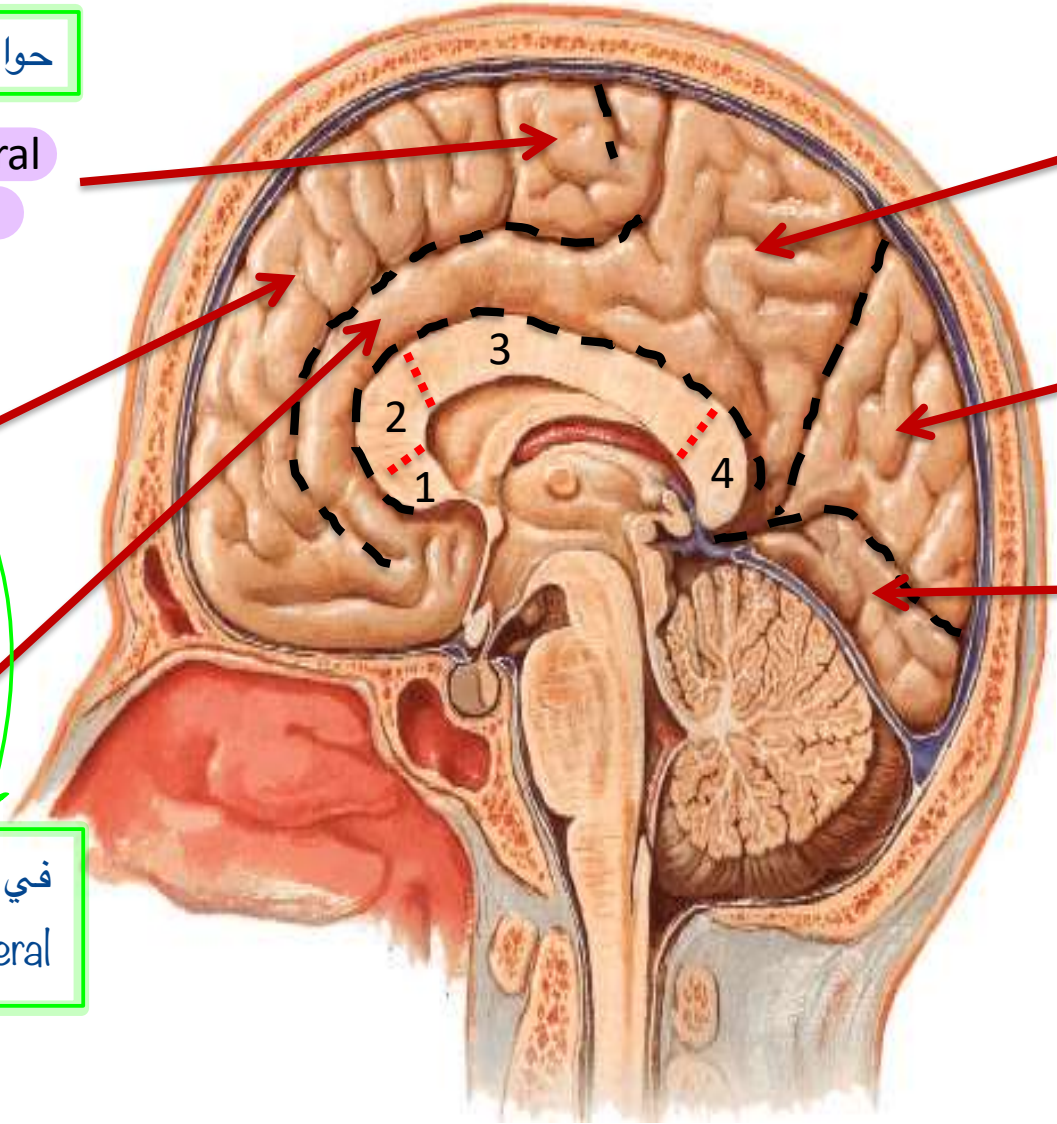
Cingulate gyrus



Lingual gyrus

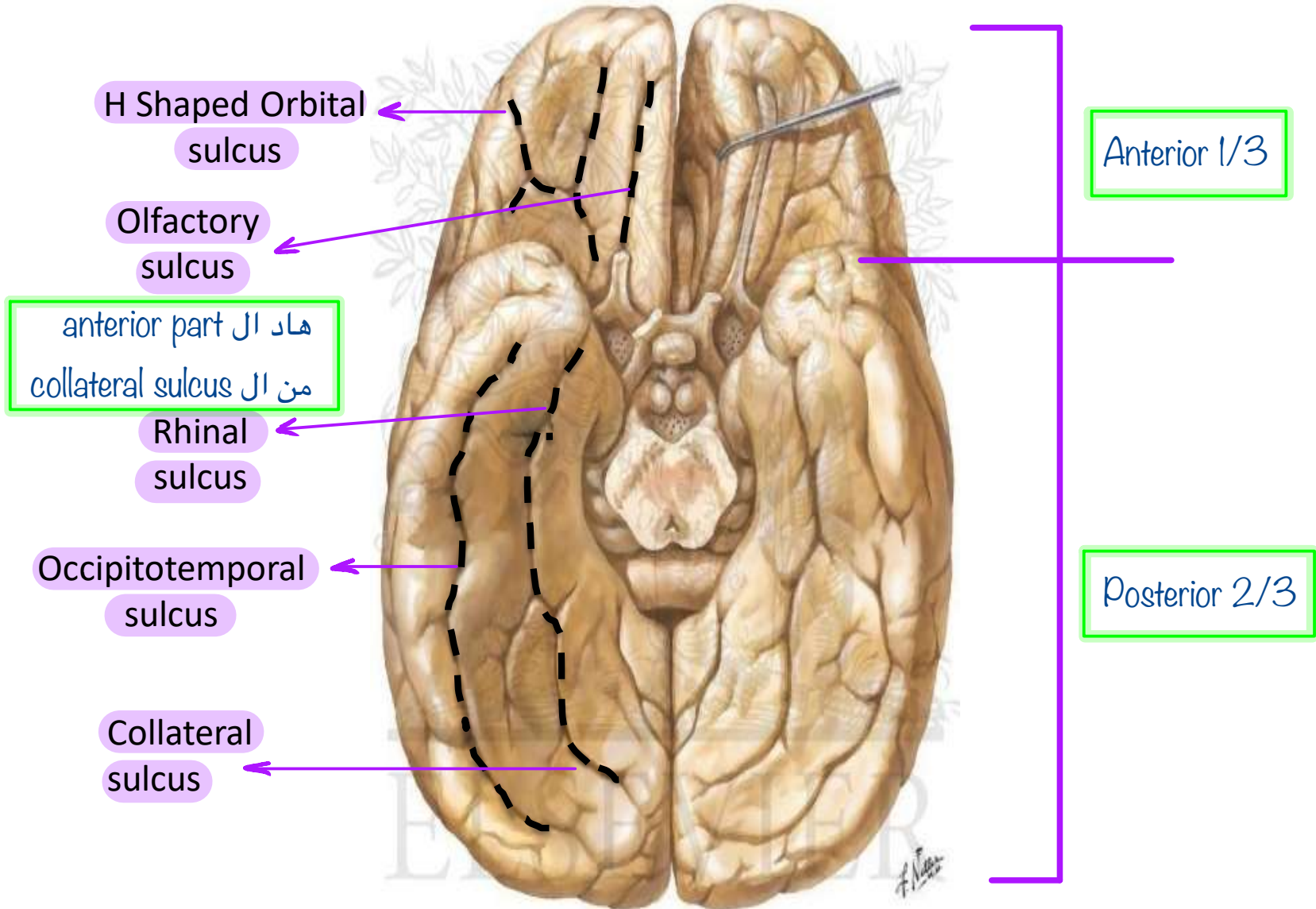


في 4 frontal gyri 3 منهم medial و واحد lateral



او ممكن يجي سؤال عن sulcus بفصل بين مين و مين من ال gyri

INFERIOR SURFACE OF THE BRAIN



INFERIOR SURFACE OF THE BRAIN

- 1 » superior
- 2 » medial
- 3 » lateral
- 4 » inferior

Orbital gyri

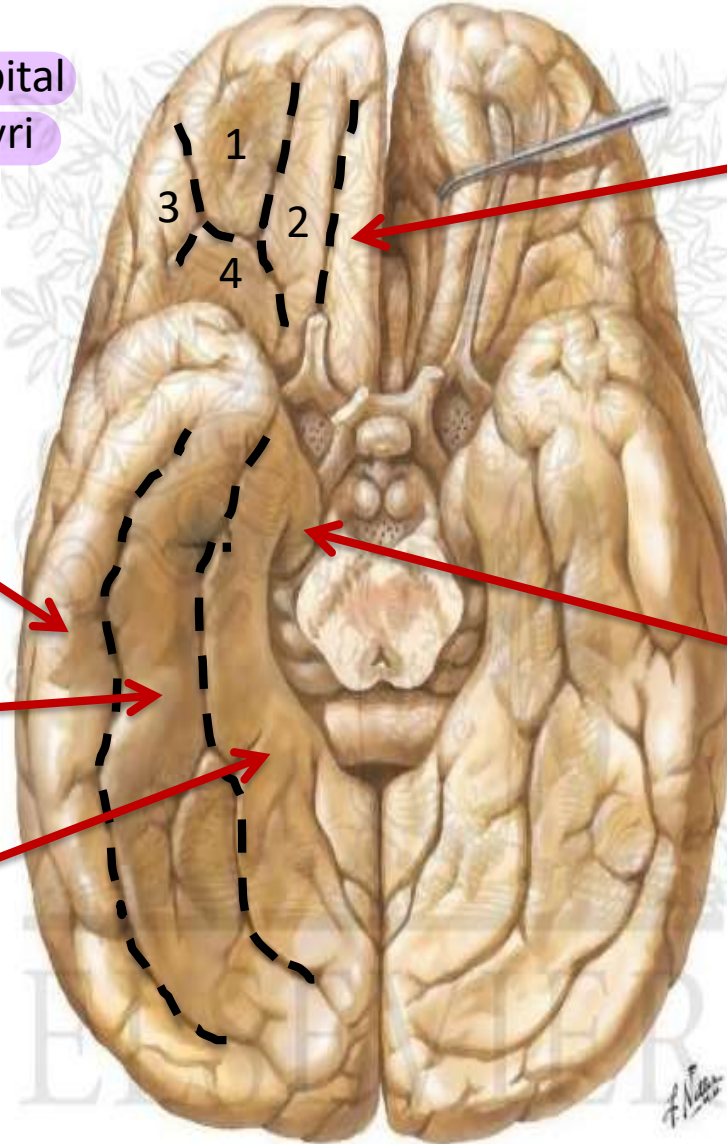
Gyrus rectus

Lateral occipitotemporal

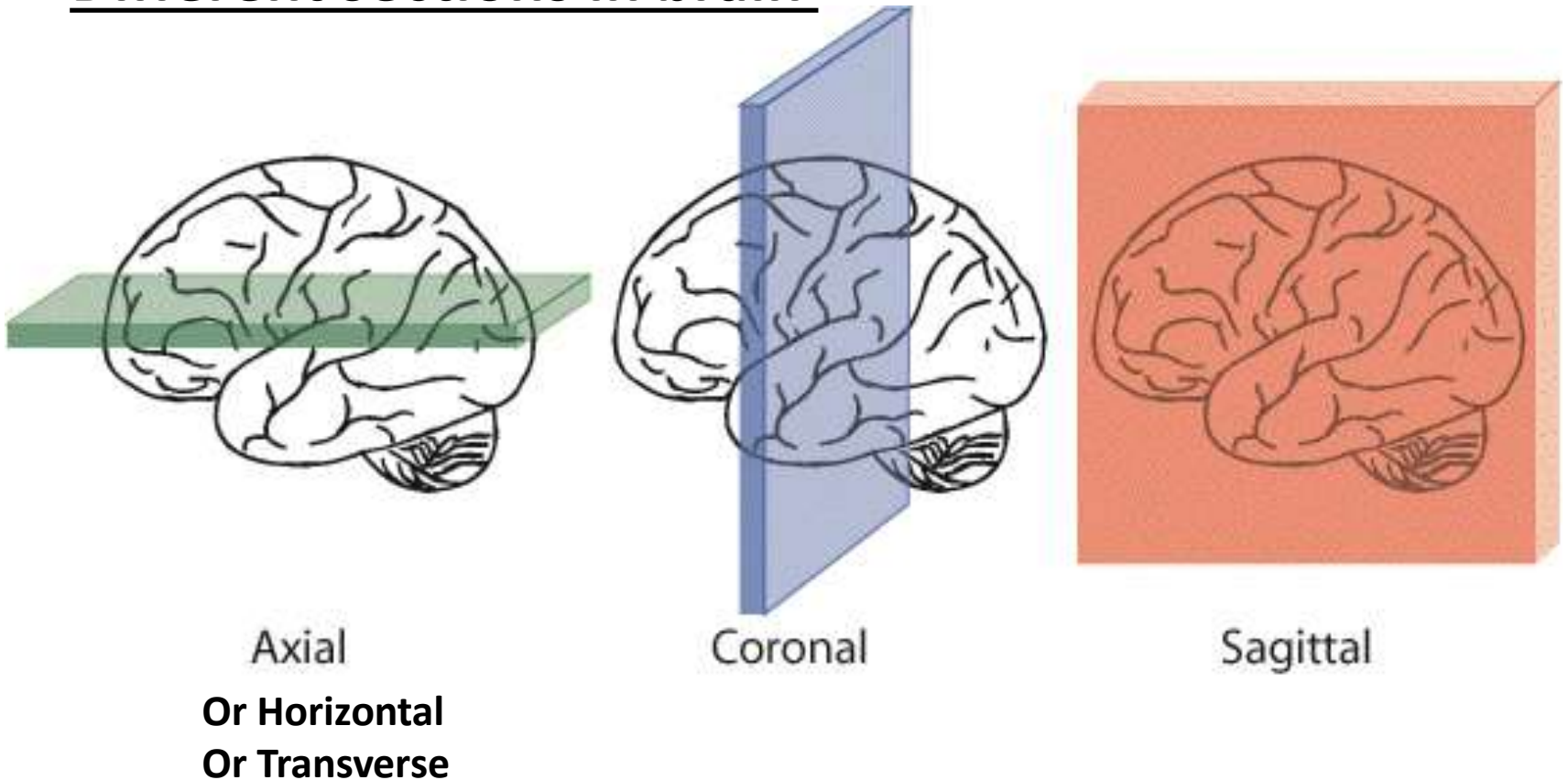
Uncus of temporal lobe

Medial occipitotemporal

Parahippocampal gyrus



Different sections in brain

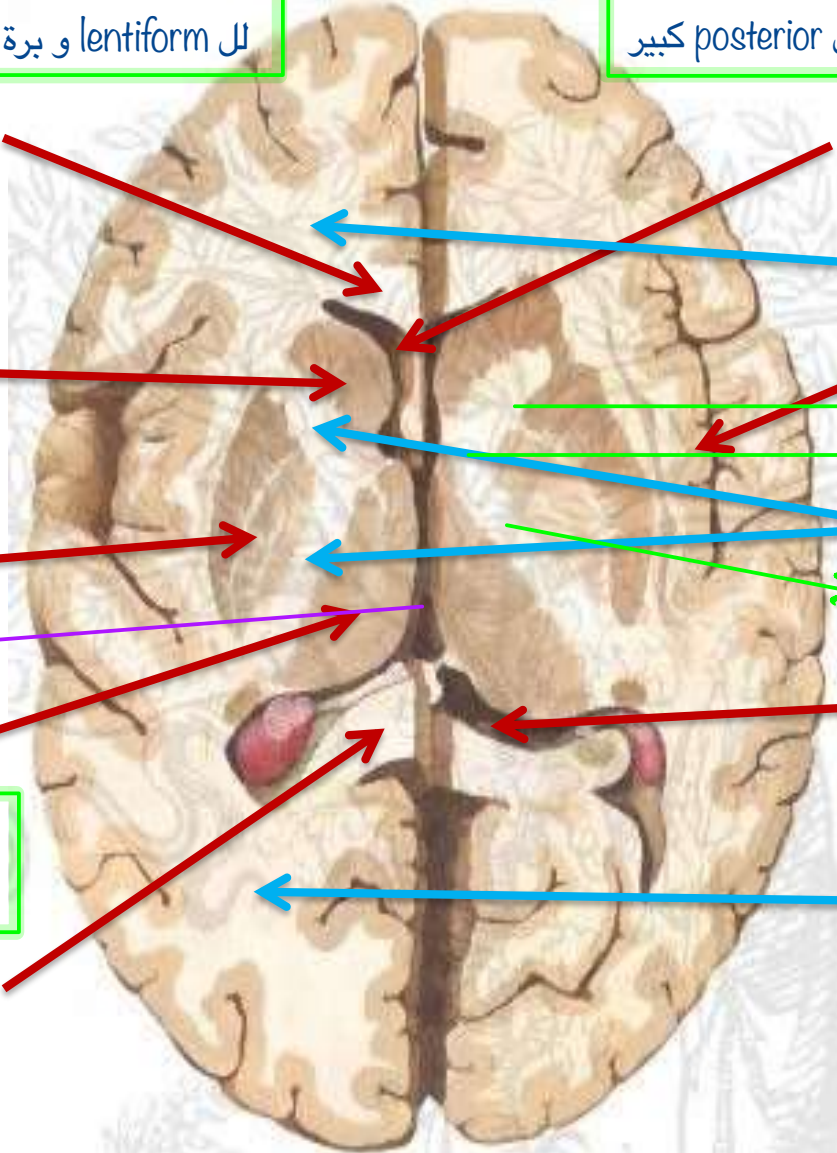


ما بقدر احكي عنه medial لانني مش شايف ال corpus callosum ولا بحكي inferior لانني مش مييزة ال anterior
and posterior ولا شايف ال orbital sulcus طيب هل هو lateral برضه لا اذا بصفي transverse surface

TRANSVERSE SECTION OF THE

غير ال internal capsule في external بتيجي lateral
 ال lentiform وبرة اخر اشني في extreme capsule

يعرف anterior من posterior من ال horns of lateral
 ال anterior horn صغير و ال posterior كبير



Genu of corpus callosum

Anterior horn of lateral ventricle

Head of Caudate

Forceps minor
 بين ال caudate and lentiform nuclei

Lentiform nucleus

Insula
 Anterior limb
 Genu

3rd ventricle
 فتحة ال

Internal capsule
 بين ال lentiform and thalamus
 Posterior limb

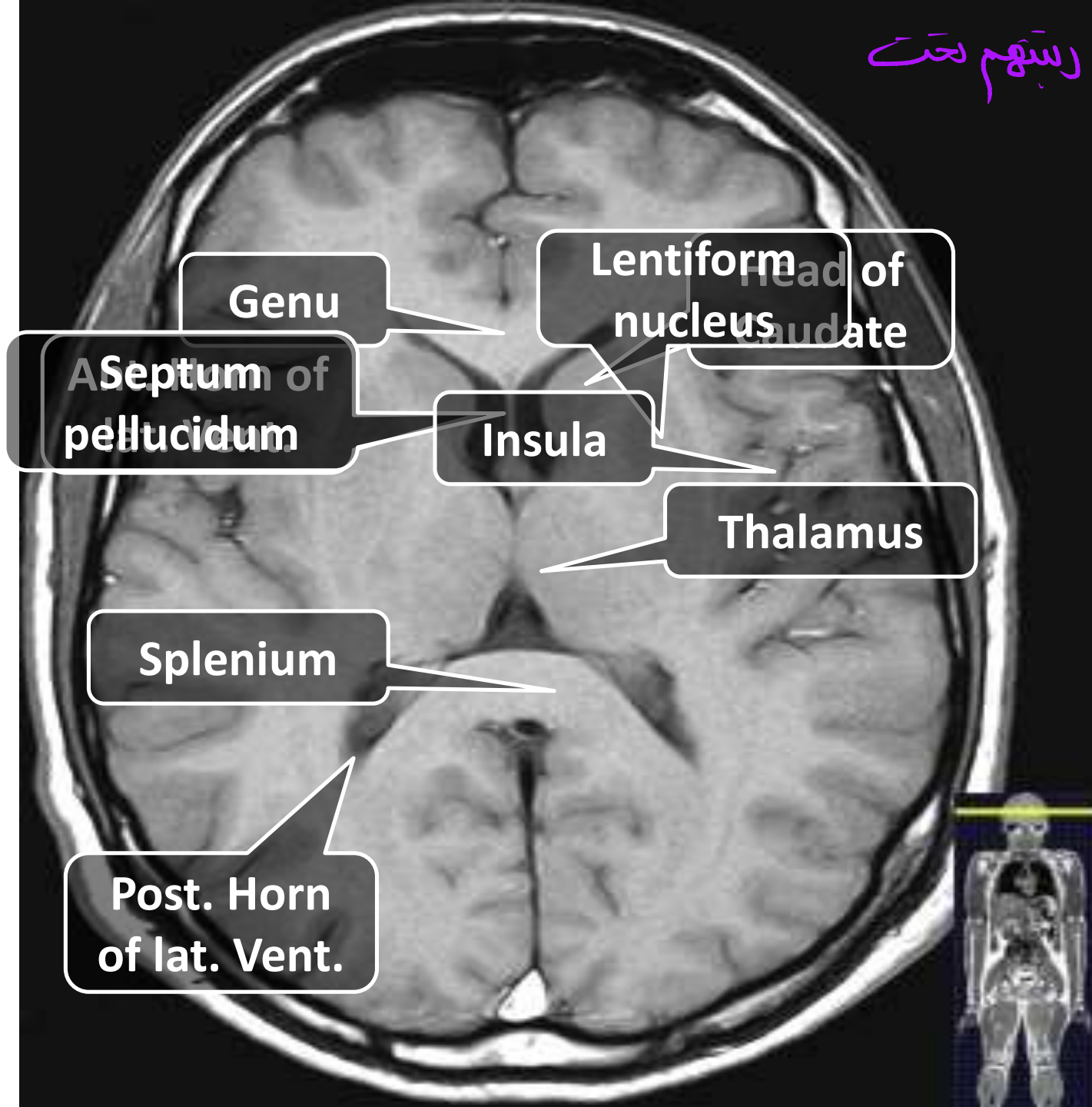
Thalamus

Posterior horn of lateral ventricle

سكرتيرة ال brain بمر كل اشني
 منها ما عدا ال olfactory

Splenium of corpus callosum

Forceps major



Genu

Septum of
pellucidum

Insula

Thalamus

Splenum

Post. Horn
of lat. Vent.

Lentiform
nucleus
Head of
caudate



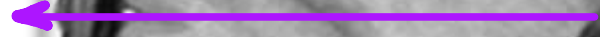
Anterior horn of lateral ventricle



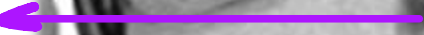
Lentiform



3rd ventricle



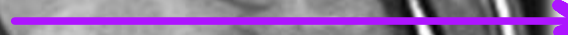
Posterior horn of lateral ventricle



Genu



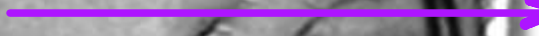
Head of caudate



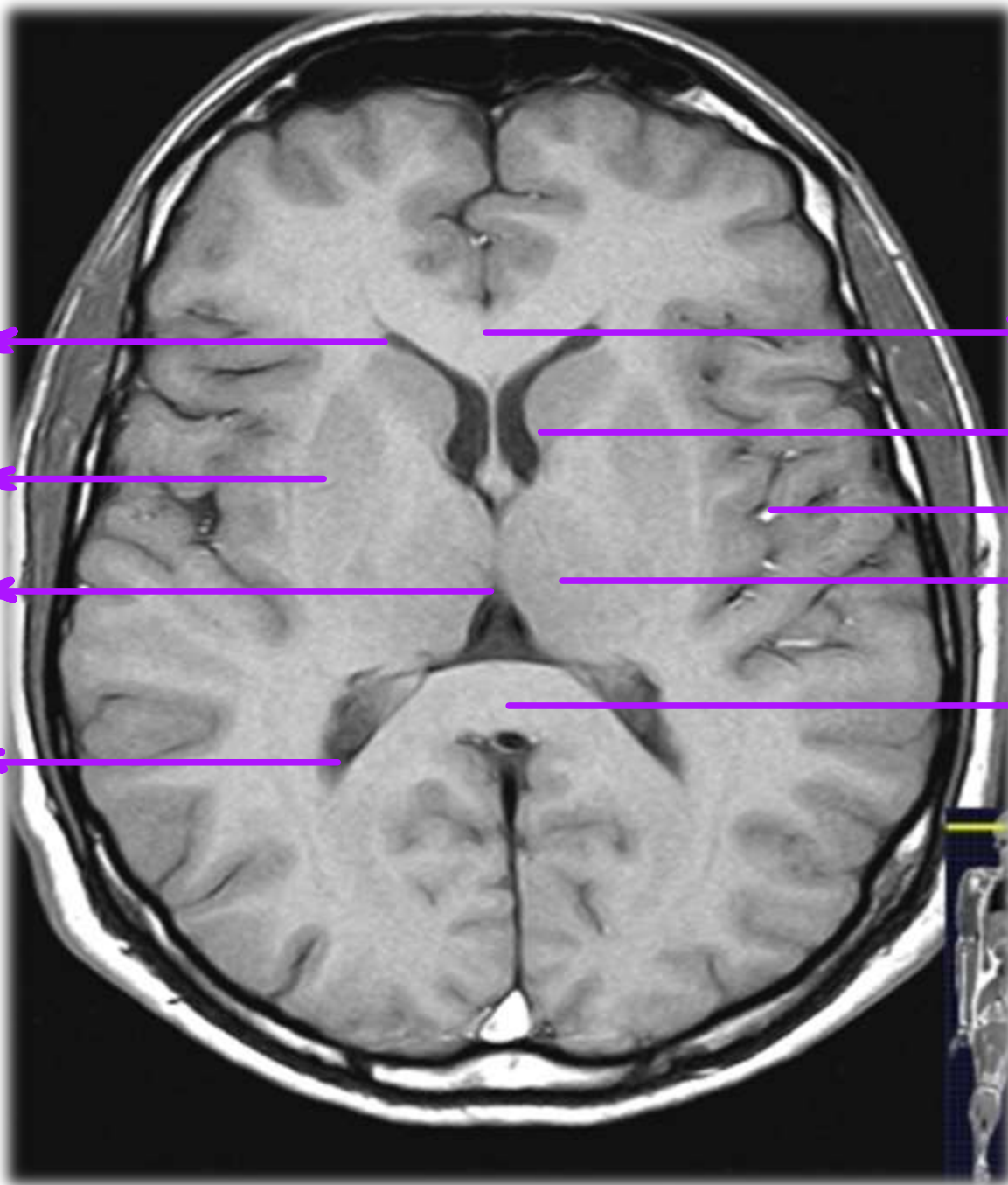
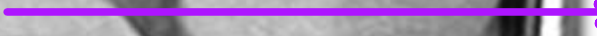
Insula



Thalamus



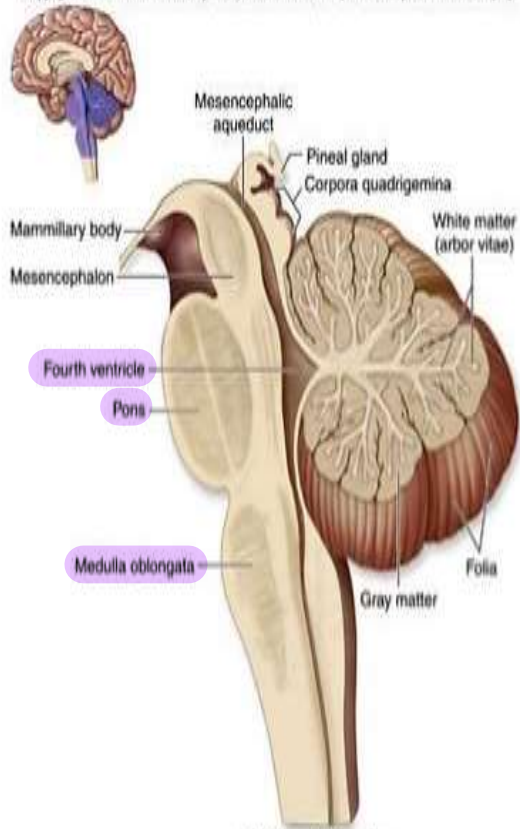
Splenium



The Cerebellum

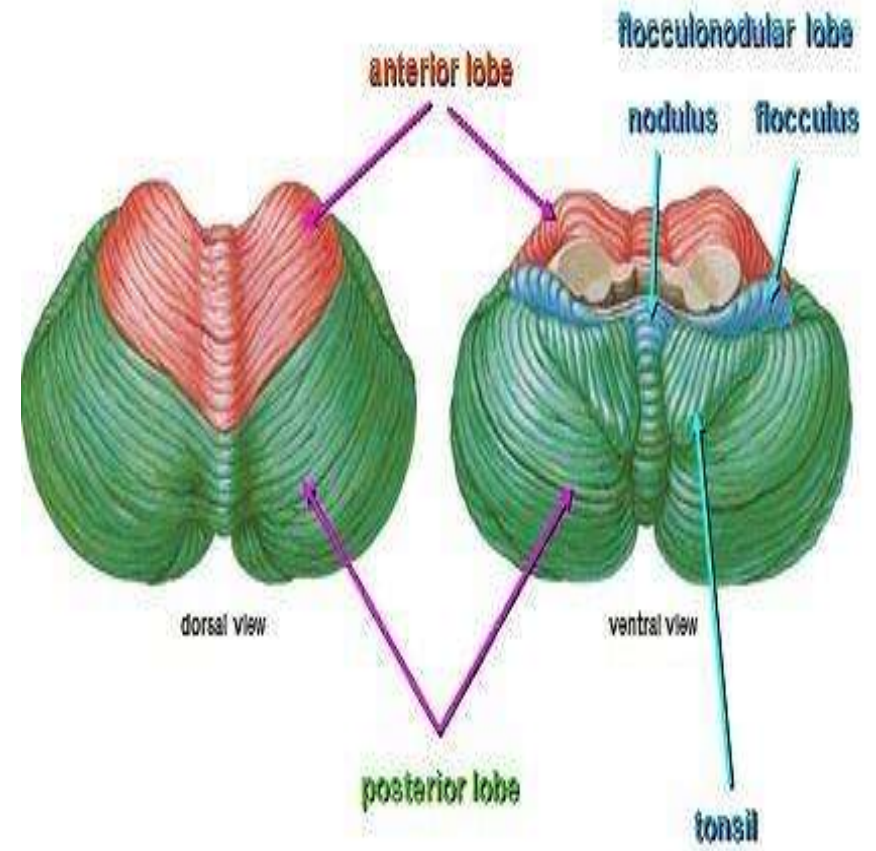


Copyright © The McGraw-Hill Companies, Inc. Permission required for reproduction or display.

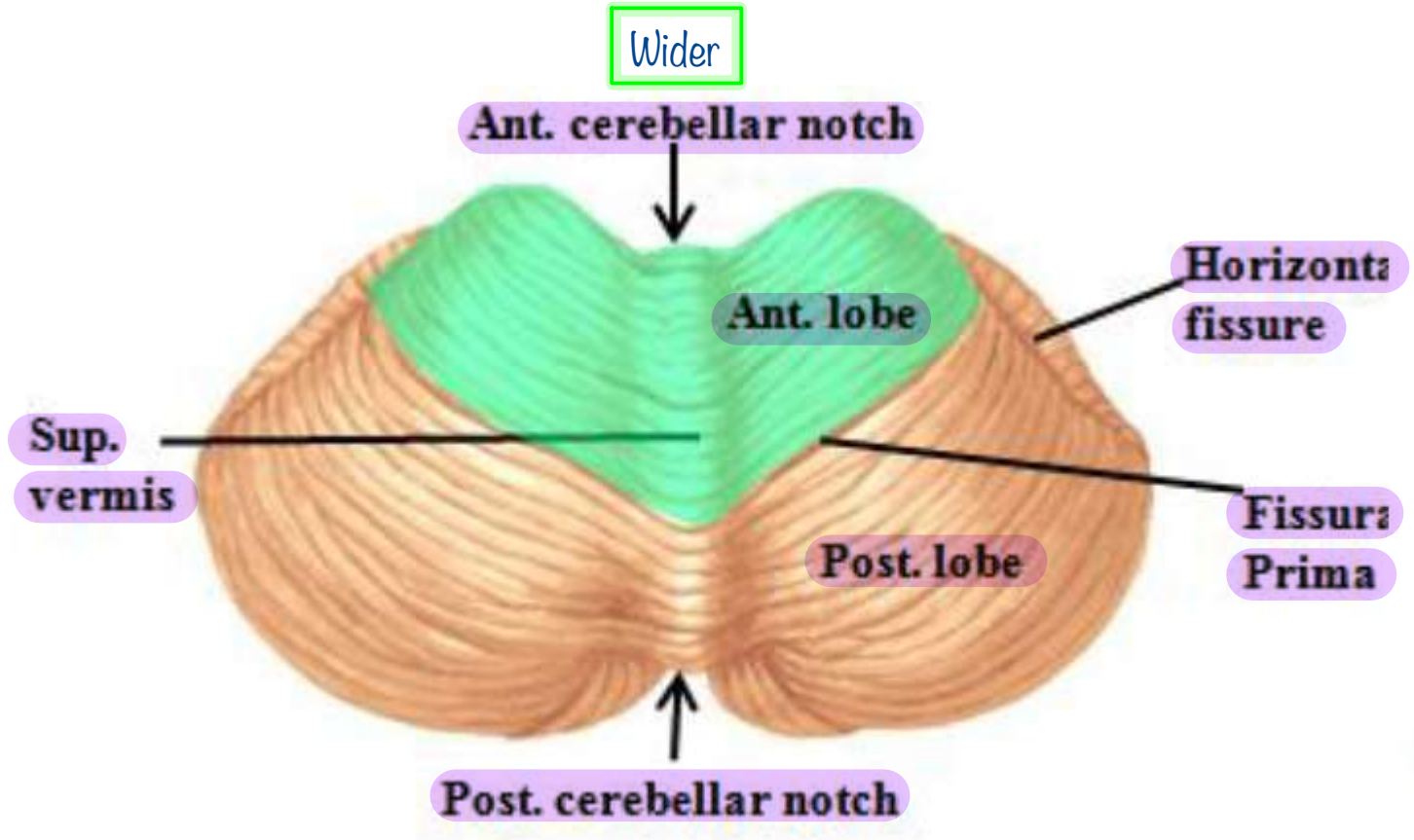


(a) Midsagittal section

CEREBELLUM

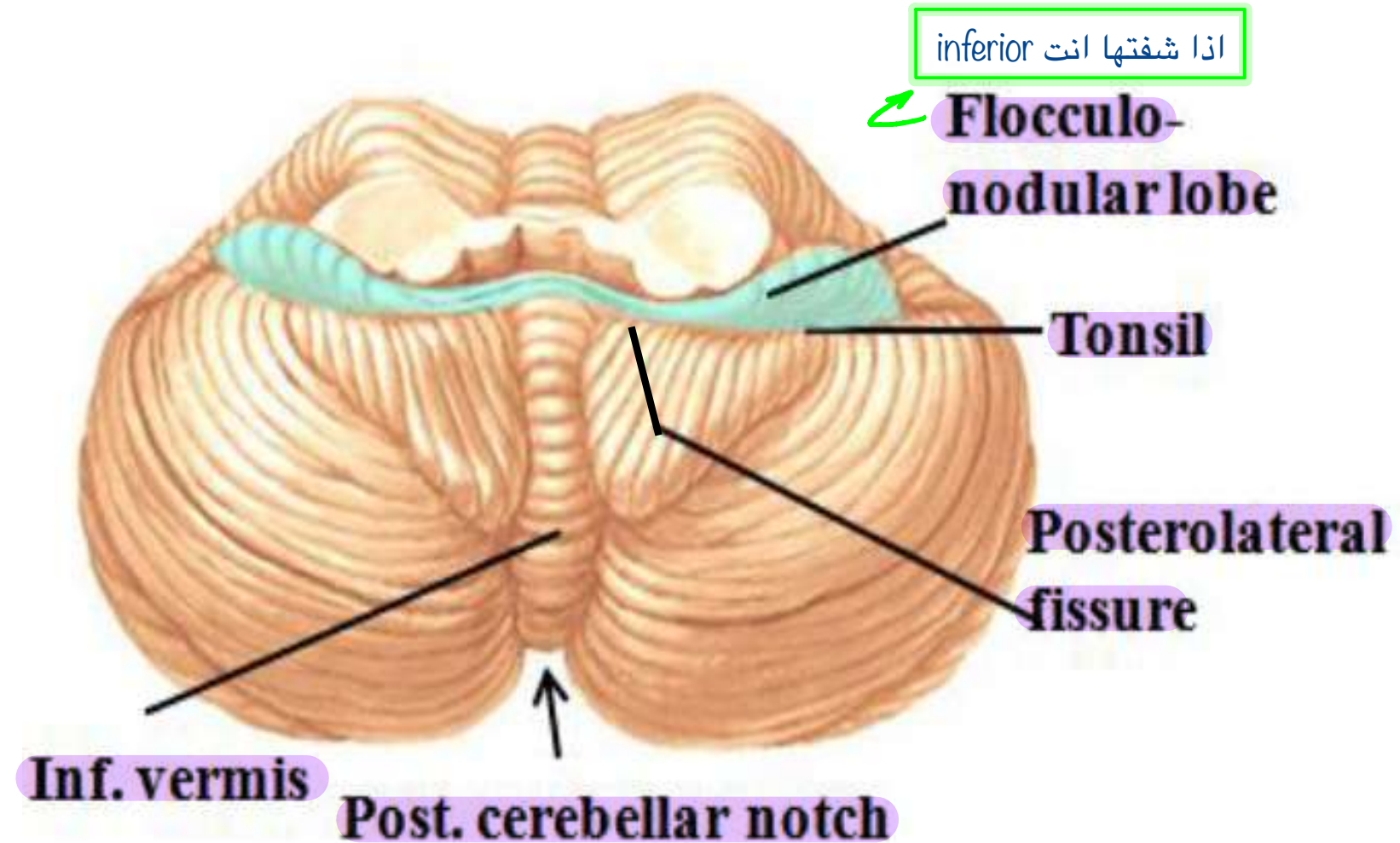


Superior Surface of the Cerebellum

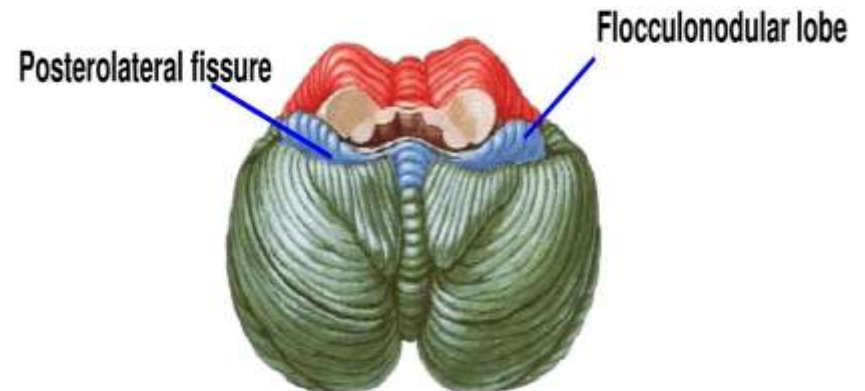
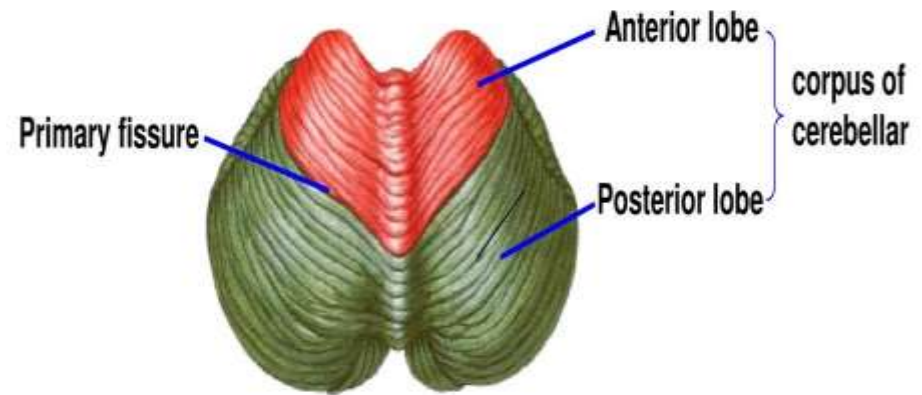
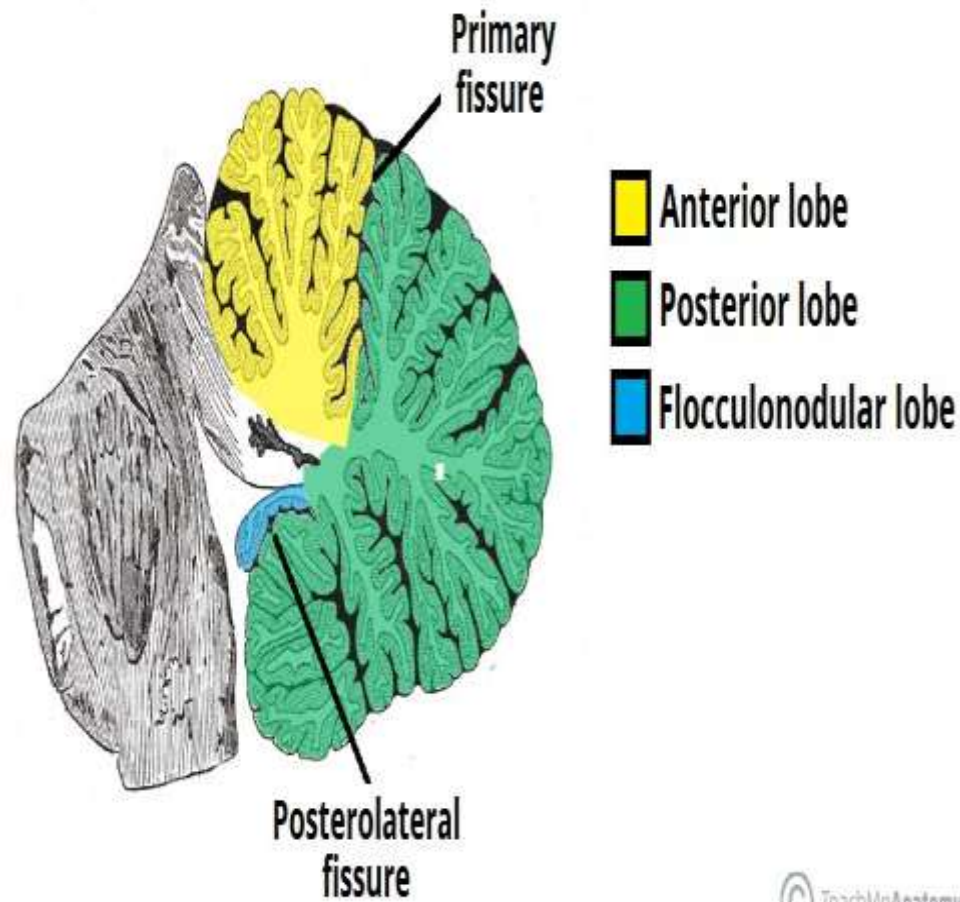


Inferior Surface of the Cerebellum

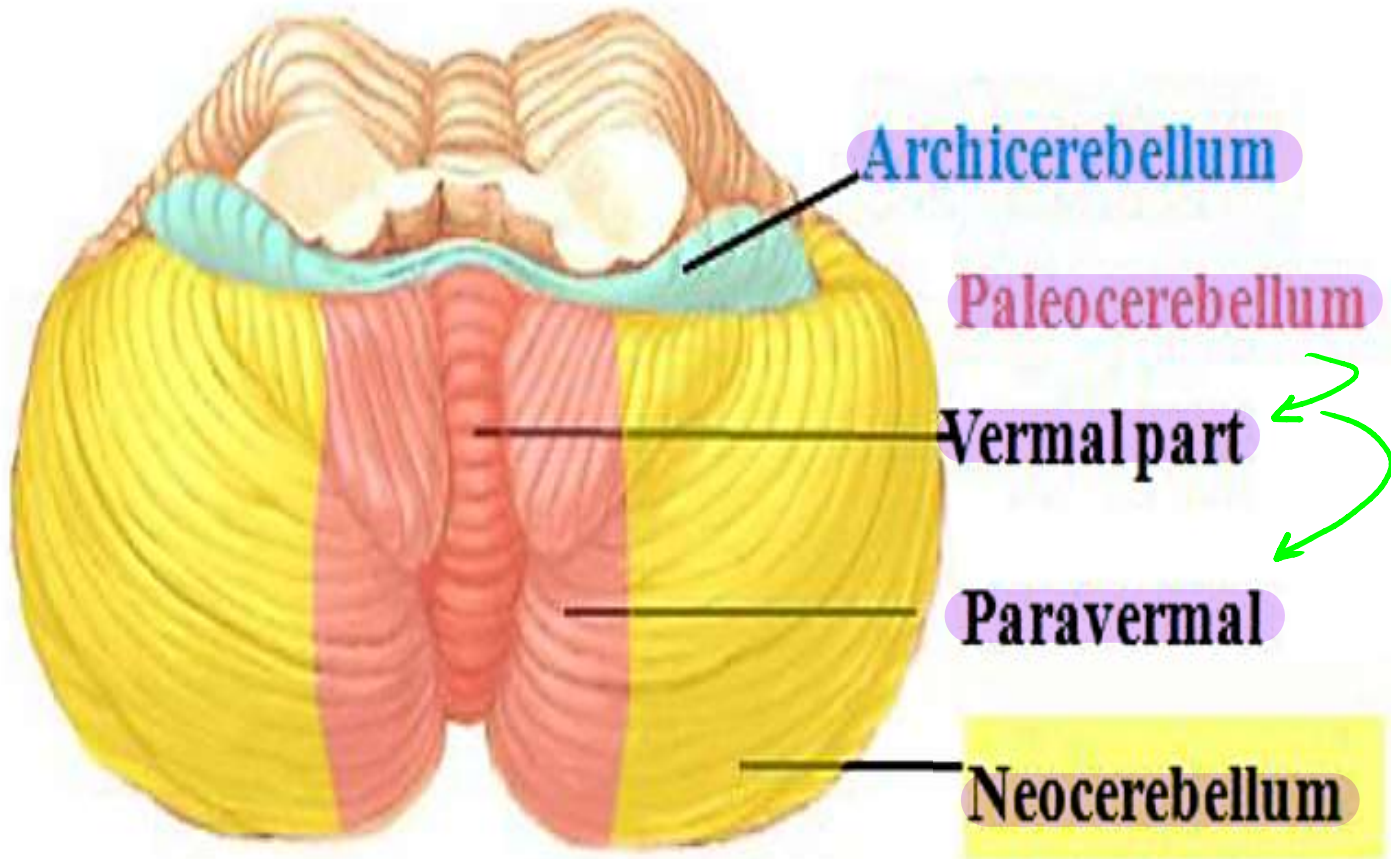
inferior اذا شفتها انت



Anatomical Lobes of the Cerebellum



Functional Lobes of the Cerebellum



Thank you